

4

3

2

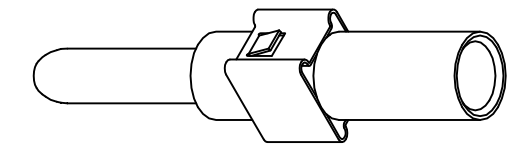
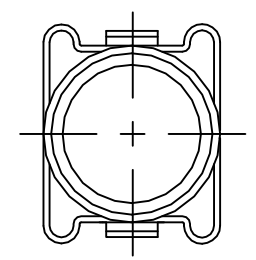
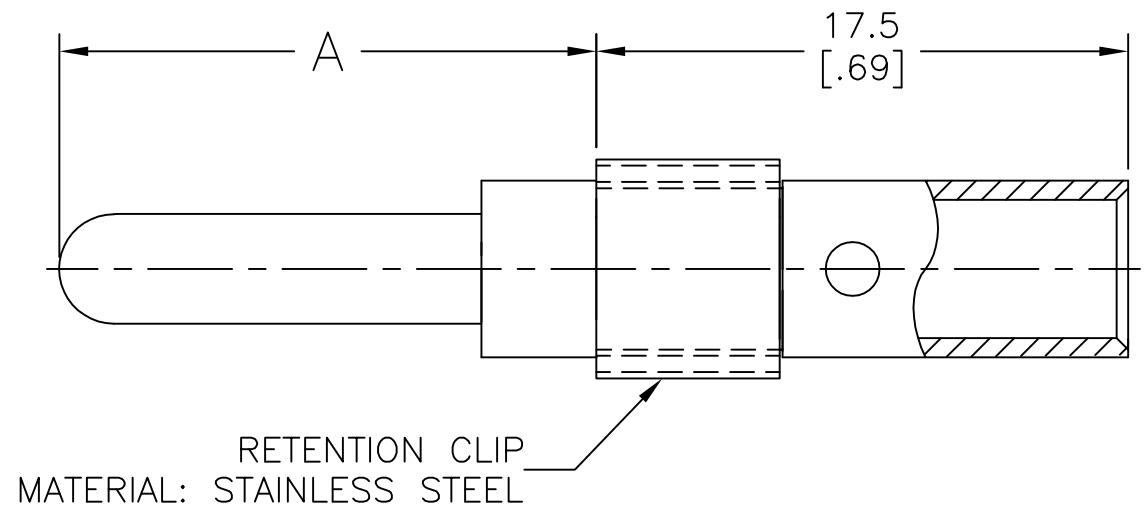
1

THIS DRAWING IS UNPUBLISHED.      RELEASED FOR PUBLICATION      -,- .

© COPYRIGHT - TE Connectivity      ALL RIGHTS RESERVED.

REVISIONS					
P	LTR	DESCRIPTION	DATE	DWN	APVD
	D	EC OB20-0791-98	30/JUN/98	-	DAP
	E	REVISED PER ECO-17-010218	14JUL2017	RS	MZ

- △1 MATERIAL: COPPER ALLOY.
- △2 FINISH: 30 MICROINCHES MIN. GOLD OVER 50 MICROINCHES MIN. NICKEL.
- 3 WIRE BARREL WILL ACCEPT #8 AWG WIRE.
- 4 MATES WITH AMP P/N 193990-X.
- △5 FINISH: 200 MICROINCHES MIN. SILVER OVER 40 MICROINCHES MIN. NICKEL.
- 6 ALL DIMENSIONS ARE REFERENCE ONLY.



	△5	15.7[.62]	193991-4
OBSOLETE	△5	25.4[1.00]	193991-3
OBSOLETE	△2	15.7[.62]	193991-2
OBSOLETE	△2	25.4[1.00]	193991-1
	FINISH	A	PART NO

THIS DRAWING IS A CONTROLLED DOCUMENT.		DWN D.A.P.	04-13-94	<b>STE</b> TE Connectivity		
DIMENSIONS: mm [INCHES]		CHK	-			
TOLERANCES UNLESS OTHERWISE SPECIFIED:		APVD	-	PIN ASSEMBLY, TYPE XII HIGH CURRENT #8 AWG		
0 PLC ± -		PRODUCT SPEC	-	SIZE		
1 PLC ± -		APPLICATION SPEC	-	CAGE CODE	DRAWING NO	RESTRICTED TO
2 PLC ± -				A3	00779	©=193991
3 PLC ± -		WEIGHT	-	SCALE	SHEET	REV
4 PLC ± -				-	1 OF 1	E
ANGLES ± -						
MATERIAL	FINISH	CUSTOMER DRAWING				
△1	△2 △5					

## X-ON Electronics

Largest Supplier of Electrical and Electronic Components

*Click to view similar products for [Standard Circular Contacts](#) category:*

*Click to view products by [TE Connectivity](#) manufacturer:*

Other Similar products are found below :

[RC16M23J](#) [133780-1](#) [RM20M13D28](#) [RM24M9D28](#) [RMMX110-1D28](#) [ELFH02211](#) [ELVP16100E](#) [164-901-CD](#) [BACS16X1A](#)  
[EN3545007SCE](#) [BV002BSQ20049CZ](#) [BV002SSQ160404CZ](#) [1900ND05S1B00B](#) [SJS862201](#) [166566-1](#) [1900ND04S1X00D](#) [ST-JL05-16S-](#)  
[C3-100](#) [ST-JL05-20S-C1-100](#) [ST-JL05-20S-C2-100](#) [T01-CRIMP-S03](#) [APK-SA16A07-002](#) [27963-15T12](#) [CONT-JL05-08S-C2-10](#) [CONT-](#)  
[JL05-12S-C1-10](#) [RC16M-23T](#) [RFD26L-1D28](#) [BV002ASJ16049CW](#) [33505815019](#) [JN1-22-20S-R-PKG100](#) [031-50213](#) [031-50794](#)  
[ELFH08251](#) [ELFP0641GE](#) [SJS861301M](#) [ST-JL05-16S-C1-100](#) [ST-JL05-20P-C1-100](#) [82911466K](#) [82911467NK](#) [ESLM03200](#) [192991-0087](#)  
[192900-0570](#) [ELFH07251](#) [T3P16FC3LZ](#) [ST-JL05-16S-C2-3500](#) [ZP-4016-10NF](#) [CONT-JL05-12P-C1-10](#) [RM20M12G8D28](#) [031-50676](#)  
[12115010110](#) [RJFTVC2MG](#)