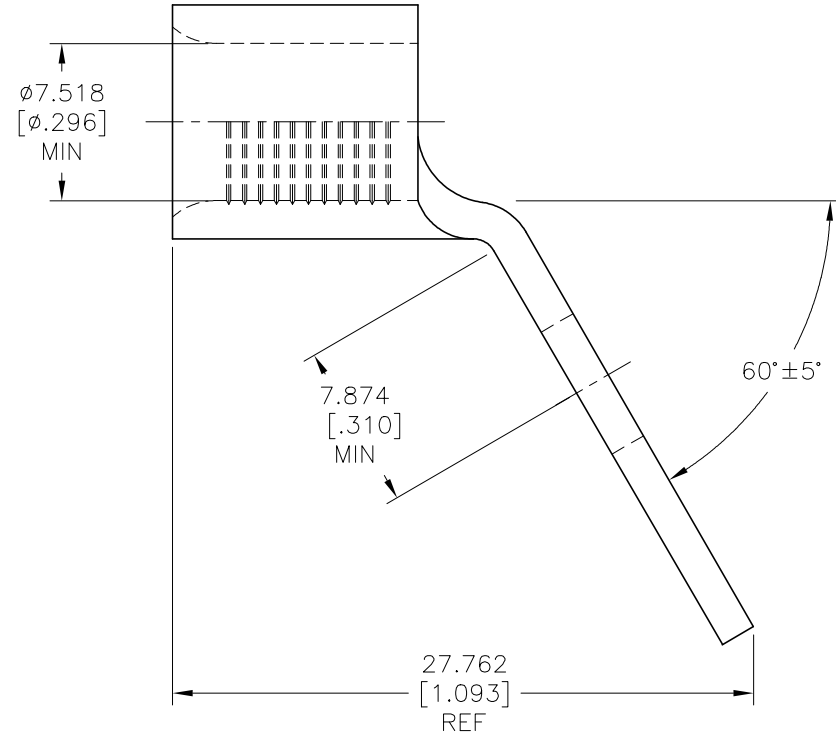
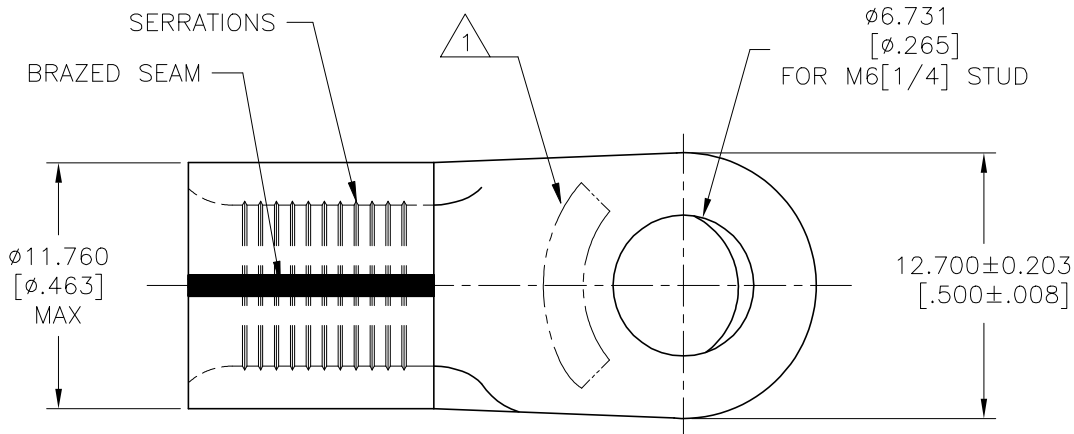


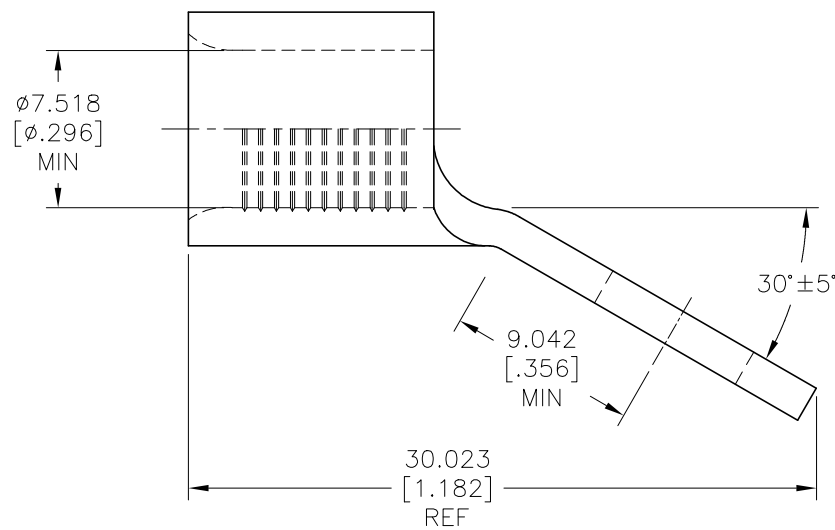
THIS DRAWING IS UNPUBLISHED. RELEASED FOR PUBLICATION  
 © COPYRIGHT - By - ALL RIGHTS RESERVED.

| REVISIONS |     |                           |           |       |
|-----------|-----|---------------------------|-----------|-------|
| P         | LTR | DESCRIPTION               | DATE      | APVD  |
| A         |     | REVISED PER ECO-18-007844 | 23MAY2018 | RS DR |
| B         |     | REVISED PER ECO-18-013817 | 31AUG2018 | RS DR |
| C         |     | REVISED PER ECO-19-009765 | 03JUL2019 | RS DR |

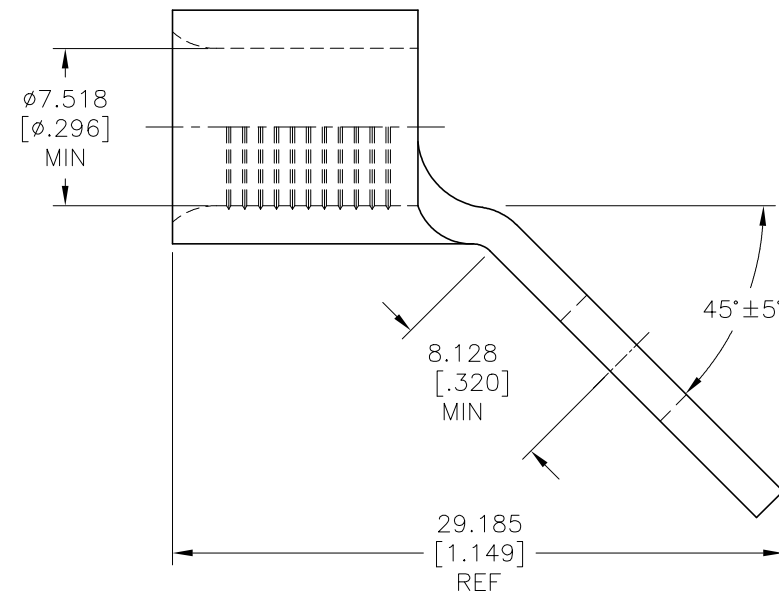


**AMP**  
 WIRE RANGE  
 4 AWG  
 SOLID OR STRANDED

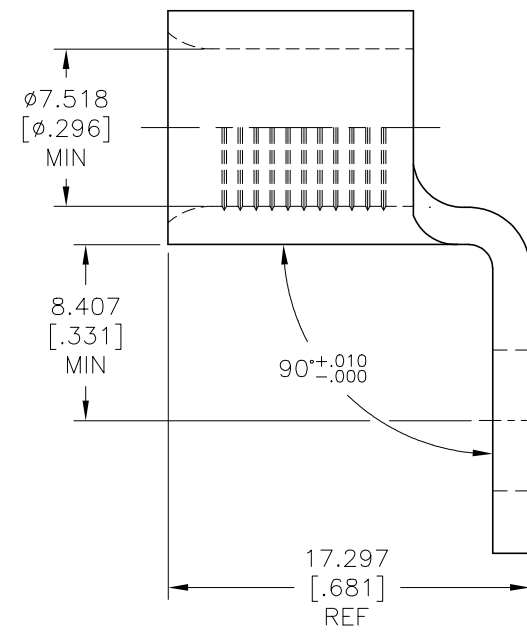
- 1 STAMP AMP 4\* APPROX AS SHOWN.
- 2 MATERIAL THK.  $1.778 \pm 0.076$  [.070 ± 0.003].
- 3 NICKEL PLATE  $0.00762$  [.000300] MIN THK PER SAE AMS QQ-N-290.



FOR 1958525-4 ONLY



FOR 1958525-2 ONLY



FOR 1958525-3 ONLY

| PRELIMINARY | QTY | PACKAGE TYPE | BEND ANGLE | PART NUMBER |
|-------------|-----|--------------|------------|-------------|
|             | 100 | LOOSE PIECE  | 60°        | 1958525-4   |
|             |     |              | 90°        | 1958525-3   |
|             |     |              | 45°        | 1958525-2   |
|             |     |              | 30°        | 1958525-1   |

FOR 1958525-1 ONLY

AMP INCORPORATED  
 CUSTOMER SERVICE SYSTEMS

MAX RECOMMENDED OPERATING TEMPERATURE:  
 $343^\circ\text{C}$  [649°F]

VOLTAGE RATING:  
 NOT APPLICABLE

WIRE CROSS SECTIONAL AREA RANGE:  
 $16.8-26.7\text{mm}^2$  [33,100-52,600] CIR MILS  
 SOLID OR STRANDED

|  |  |
|--|--|
| FOR ADDITIONAL PRODUCT INFORMATION OR COPIES OF DRAWINGS AND TECHNICAL DOCUMENTS | PRODUCT INFORMATION CENTER<br>1-800-522-6752 |
| FOR APPLICATION TOOLING INFORMATION  | TOOLING ASSISTANCE CENTER<br>1-800-722-1111  |
| FOR ORDER ENTRY  | 1-800-526-5142                               |

|  |  |                                     |                                 |  |
|--|--|-------------------------------------|---------------------------------|--|
| THIS DRAWING IS A CONTROLLED DOCUMENT. |  | DWN<br>RAVI S<br>23MAY2018          | <b>STE</b> TE Connectivity Ltd. |  |
| DIMENSIONS:<br>mm [INCHES]             |  | CHK<br>ROHDE DANIEL F<br>23MAY2018  |                                 |  |
| TOLERANCES UNLESS OTHERWISE SPECIFIED: |  | APVD<br>ROHDE DANIEL F<br>23MAY2018 | NAME                            |  |
| 0 PLC ± -                              |  | PRODUCT SPEC                        |                                 |  |
| 1 PLC ± -                              |  | 108-32046                           |                                 |  |
| 2 PLC ± -                              |  | APPLICATION SPEC                    |                                 |  |
| 3 PLC ± 0.127 [.005]                   |  | 114-2162                            |                                 |  |
| 4 PLC ± -                              |  | WEIGHT                              |                                 |  |
| FINISH                                 |  | A2 00779 C=1958525                  |                                 |  |
| COPPER PER ASTM B-152 ANNEALED         |  | CUSTOMER DRAWING                    |                                 |  |
| 3                                      |  | SCALE 4:1 SHEET 1 OF 1 REV C        |                                 |  |

## X-ON Electronics

Largest Supplier of Electrical and Electronic Components

*Click to view similar products for [Terminals category](#):*

*Click to view products by [TE Connectivity manufacturer](#):*

Other Similar products are found below :

[00-054007-01074-6](#) [00-054007-70206-1](#) [00-054007-70210-8](#) [00-054007-70217-7](#) [00-054007-70228-3](#) [00-054007-70256-6](#) [00-054007-70316-7](#) [00-054007-49560-4](#) [00-054007-70209-2](#) [00-054007-70231-3](#) [00-054007-70241-2](#) [00-054007-70242-9](#) [00-054007-70246-7](#) [00-054007-70263-4](#) [00-054007-70288-7](#) [00-054007-70290-0](#) [00-054007-70300-6](#) [00-054007-70304-4](#) [01-2900-1-04412](#) [00581P0075](#) [600TS-10](#) [605601-1](#) [60598-1-CUT-TAPE](#) [60617-1-C](#) [61314-6-C](#) [61810-3](#) [62149-1](#) [626-0194](#) [63-S](#) [M55155/059I03](#) [M55155/079C01](#) [M55155/099B03](#) [M55155/099H02](#) [M55155/109H01](#) [M55155/12XH05](#) [M55155/29-5S](#) [M55155/29XJ08](#) [M55155/30-6S](#) [M55155/30-9S](#) [M55155/30XI09](#) [M6-14RSX](#) [696683-1](#) [696861-1](#) [696999-1](#) [M86700006](#) [D18-110B-C](#) [D18-110B-M](#) [701-1936](#) [701-1955](#) [701-2003](#)