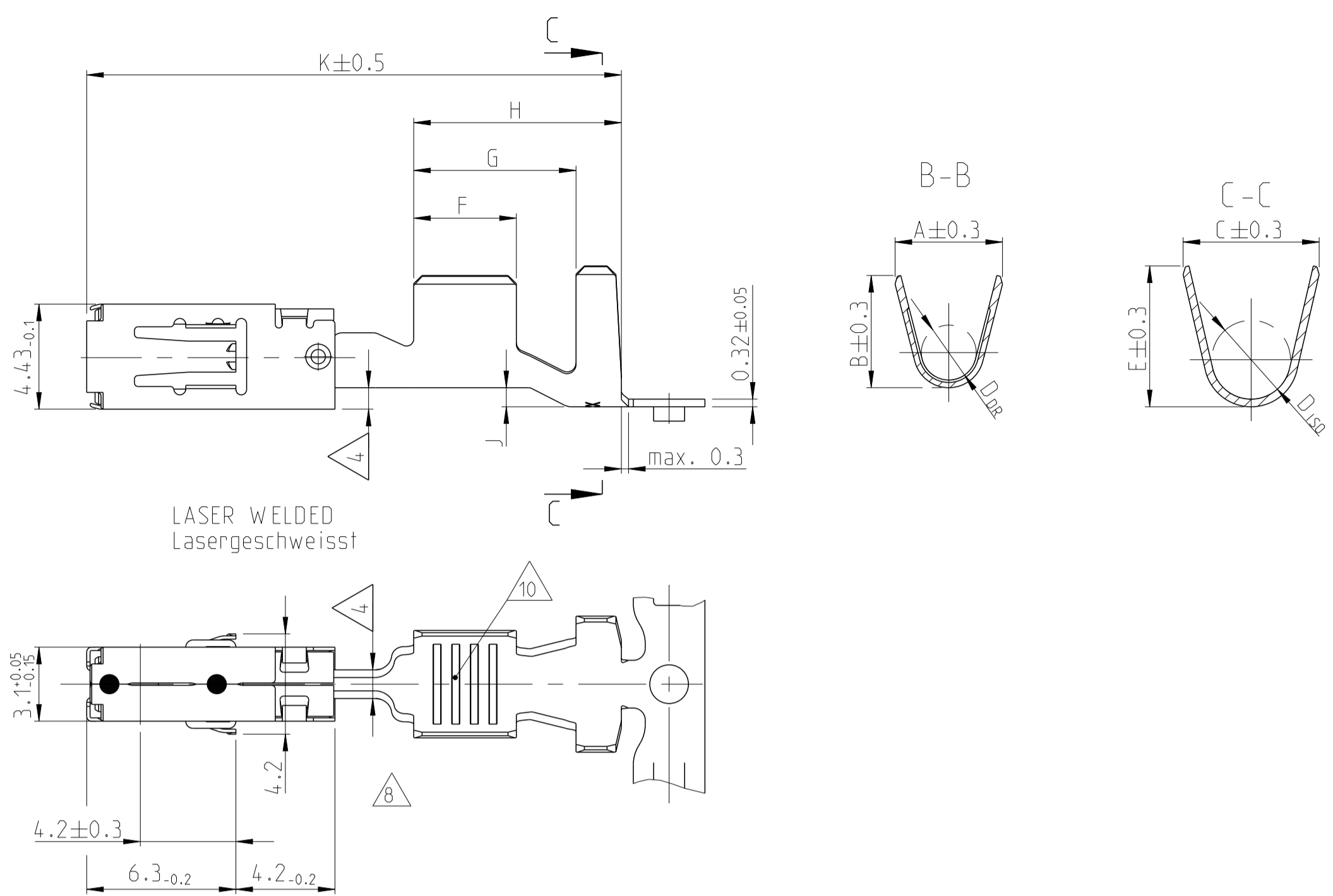


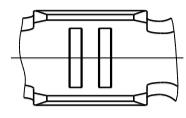
STANDARD CRIMP



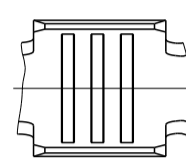
LASER WELDED
Lasergeschweisst

SERRATION DESIGN Serration Ausfuehrung

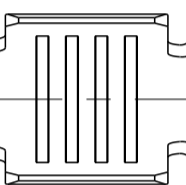
DESIGN / Ausfuehrung
0,5 - 1,0mm²



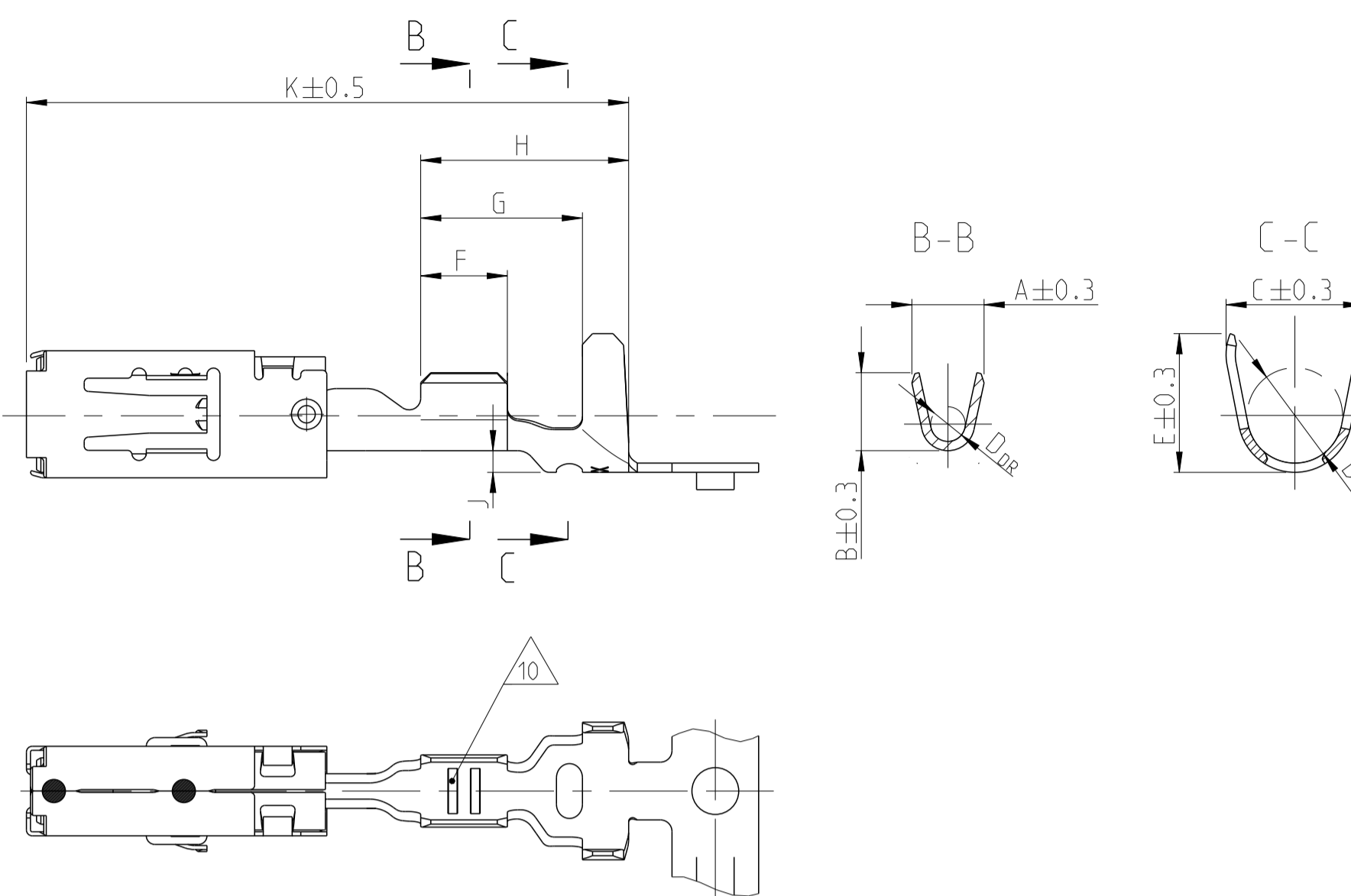
DESIGN / Ausfuehrung
0,2 - 0,5mm²
1,5 - 2,5mm²
12 AWG



DESIGN / Ausfuehrung
4,0mm²



SINGLE WIRE SEAL Einzeldichtungssystem



REVISIONS				
P.	LTN	DESCRIPTION	DATE	APPV
J11		NOTE B ADDED. TABLE UPDATE WITH PNs 1...4	17MAY2017	MAH. SBEC
J12		Pns 1-968855-4, 1-968857-4, 1-968859-4 OBSOLETE ON DRW.	05MAR2018	MAH. SBEC
J13		Added PN 2-968851-3, 2-968853-3, 2-968857-3 and 2-968859-3	07MAY2018	FRAN. BECK
J14		Obsolete PN 1-968882-1/-2/-3; PN 1-968880-1/-3	11NOV2020	FRAN. BECK

NOTES:
Bemerkungen:

- MATING PART SEE INTERFACE DRAWING
TE-NO.: 114-18230-002
Gegenstecker nach Ausfuehrungsvorschrift
TE-Nr.: 114-18230-002
- SURFACE:**
 - PRE TIN PLATED 1 TO 3 μm
 - GOLD PLATED MIN. 2 μm (ONLY CONTACT AREA)
 - SILVER PLATED 3 TO 5 μm (ONLY CONTACT AREA)**Oberflaeche:**
 - verzinkt 1 bis 3 μm
 - vergoldet min. 2 μm (nur Kontaktzone)
 - versilbert 3 bis 5 μm (nur Kontaktzone)
- DOUBLE CRIMPS ARE ONLY POSSIBLE WITH APPLICATORS AUTHORIZED BY TE (NO HAND TOOL). SUITABLE TOOLS ON REQUEST. Doppelanschlaege sind nur mit von TE zugelassenen Anschlagwerkzeugen moeglich (keine Handzangen) passende Werkzeuge auf Anfrage
- GAUGE INSPECTION**
Lehrenpruefung
- DETAILS OF DESIGN ARE LEFT TO MANUFACTURER. Einzelheiten der Ausfuehrung bleiben dem Hersteller ueberlassen
- ONLY GERMAN LANGUAGE VERSION SHALL BE BINDING. Massgebend ist der deutsche Text
- PUNCHING OIL: RAZIOL CLF 11 SG
Stanzoeel:
- "Ag+" MARKING ON SILVER PLATED VERSIONS FOR INCREASED LIMIT TEMPERATURE. "Ag+" Markierung auf versilberten Versionen fuer erhoehnte Grenztemperatur
- 968880 nicht fuer Neuanwendungen, wird ersetzt durch 2141857
- 968882 nicht fuer Neuanwendungen, wird ersetzt durch 2141859
- 968880 SUPERSEDED BY PN 2141857
- 968882 SUPERSEDED BY PN 2141859
- Unterschiedliche Ausfuehrung und Anzahl der Rillen moeglich
DIFFERENT FORM AND NUMBER OF THE SERRATIONS POSSIBLE

			SINGLE WIRE SEAL / Einzeldichtung												STANDARD CRIMP												TE CONNECTIVITY					
VERSION	Ausfuehrung	ORDER-NO. / STRIP-FORM / Bestell-Nr. / Bandware	REV	MATERIAL / Werkstoff	BODY / SPRING	SURFACE / Oberflaeche		WIRE SIZE RANGE / Leiterquerschnitt	INSULATION DIAMETER / Isolationsdurchmesser	A	B	D _{DR}	C	E	D _{ISO}	F	G	H	J	K	WEIGHT / Gewicht	SINGLE WIRE SEAL / Einzeldichtung	TE CONNECTIVITY NO. / DEAD END PLUG / Blindstopfen	APPLICATION TOOLS / Verarbeitungswerkzeuge								
				X10FCM18-8	CUNISI	SILVER PLATED versilbert	12 AWG	3.0	4.0	4.2	2.0	5.0	5.0	3.5	5.9	7.5	0.8	21.0	0.59	828905-1	828922-1											
										SILVER PLATED versilbert	4	3.4	4.5	4.7	2.3	6.0	6.0	4.3	4.3	7.0	8.5	1.25	22.6	0.65	828985-1	828986-1						
				SILVER PLATED versilbert	1.5	2.2	3.6	3.8	1.7					5.0	5.0	3.5	3.5	6.0	7.6	0.8	21.0	0.58	828905-1	828922-1								
								GOLD PLATED vergoldet	2.5	3.0	2.5	2.7	1.2	4.8	4.8	3.3	3.0	5.6	7.2	0.75	21.0	0.54	828904-1	828922-1								
				PRE TIN PLATED verzinkt	1.0	2.1	2.4					2.3	1.0	4.5	4.5	3.2	2.5	5.1	6.7	0.75	21.0	0.52	828904-1	828922-1								
								SILVER PLATED versilbert	0.2	1.2	2.1	2.1	0.8	4.5	4.5	3.2	2.5	5.1	6.7	0.75	21.0	0.52	828904-1	828922-1								
				GOLD PLATED vergoldet	-	-	2.4					2.3	1.0	4.5	4.5	3.2	2.5	5.1	6.7	0.75	21.0	0.52	828904-1	828922-1								
								PRE TIN PLATED verzinkt	0.5	1.4	2.5	2.7	1.2	4.8	4.8	3.3	3.0	5.6	7.2	0.75	21.0	0.54	828904-1	828922-1								
				SILVER PLATED versilbert	4	3.7	4.5					4.7	2.3	5.7	5.9	3.3	4.3	6.8	8.7	0.8	22.6	0.65	-	-								
								SILVER PLATED versilbert	1.5	2.2	3.6	3.8	1.7	4.6	5.0	2.6	3.5	5.1	6.7	0.3	20.2	0.56	-	-								
				GOLD PLATED vergoldet	2.5	3.0	2.5					2.7	1.2	4.6	4.6	3.5	3.0	5.1	6.2	0.2	20.2	0.51	-	-								
								PRE TIN PLATED verzinkt	1.0	2.1	2.5	2.7	1.2	3.3	3.5	1.8	3.0	4.6	6.2	0.2	20.2	0.51	-	-								
				SILVER PLATED versilbert	0.5	1.4	2.4					2.3	1.0	2.9	2.9	1.4	2.5	3.8	5.7	0.2	20.2	0.48	-	-								
								GOLD PLATED vergoldet	-	-	2.4	2.3	1.0	2.9	2.9	1.4	2.5	3.8	5.7	0.2	20.2	0.48	-	-								
				PRE TIN PLATED verzinkt	0.5	1.4	2.1					2.1	0.8	2.9	2.9	1.4	2.5	3.8	5.7	0.2	20.2	0.48	-	-								
								SILVER PLATED versilbert	0.2	1.2	2.1	2.1	0.8	2.9	2.9	1.4	2.5	3.8	5.7	0.2	20.2	0.48	-	-								
				PRE TIN PLATED verzinkt	-	-	2.1					2.1	0.8	2.9	2.9	1.4	2.5	3.8	5.7	0.2	20.2	0.48	-	-								

SEE APPLICATION SPECIFICATION 114-18148
siehe Verarbeitungsspezifikation 114-18148

THIS DRAWING IS A CONTROLLED DOCUMENT.				DWG: S. Blidar 22SEP97 CHK: G. Hotea 22SEP97		TE Connectivity	
DIMENSIONS: mm		TOLERANCES UNLESS OTHERWISE SPECIFIED:		PRODUCT SPEC: 108-18513 APPLICATION SPEC: 114-18148			
MATERIAL: -		FINISH: -		WEIGHT: -		RESTRICTED TO: -	
CUSTOMER DRAWING				SCALE: 5:1		SHEET: 1 OF 1	

X-ON Electronics

Largest Supplier of Electrical and Electronic Components

Click to view similar products for [Automotive Connectors](#) category:

Click to view products by [TE Connectivity](#) manufacturer:

Other Similar products are found below :

[003-018-000](#) [60403001](#) [60993906-B](#) [M902-2131](#) [M902-2161](#) [72.330.1035.1](#) [73.353.4028.0](#) [F119300-B](#) [F166900](#) [F258300-B](#) [F358300-B](#)
[F407400](#) [F444110](#) [F487000](#) [F509500B-B](#) [827153-1](#) [8N1515-32-24P](#) [9-1326729-8](#) [925474-1](#) [928905-1](#) [964562-4](#) [968782-1](#) [GT17SA-8DS-](#)
[HU](#) [98891-1012](#) [98947-1016](#) [12004147](#) [12004475-L](#) [12010290](#) [12010309-B](#) [12015454](#) [12020219-B](#) [12020308](#) [12041318-B](#) [12052225-L](#)
[12052466](#) [12059125](#) [12064869](#) [12004327-B](#) [12010503-B](#) [12015308](#) [12015384](#) [12015909](#) [1-21030-1](#) [12041254](#) [12041318](#) [12047946-B](#)
[12047957](#) [12047957-L](#) [12059473](#) [12066261](#)