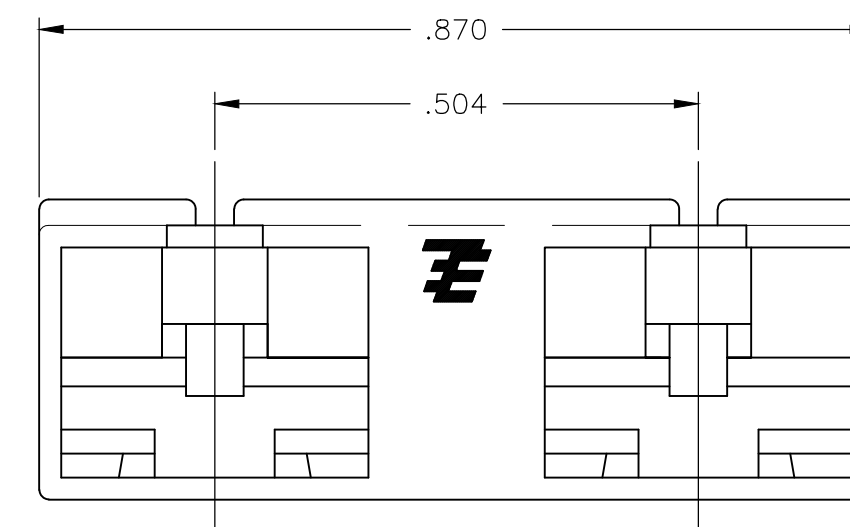
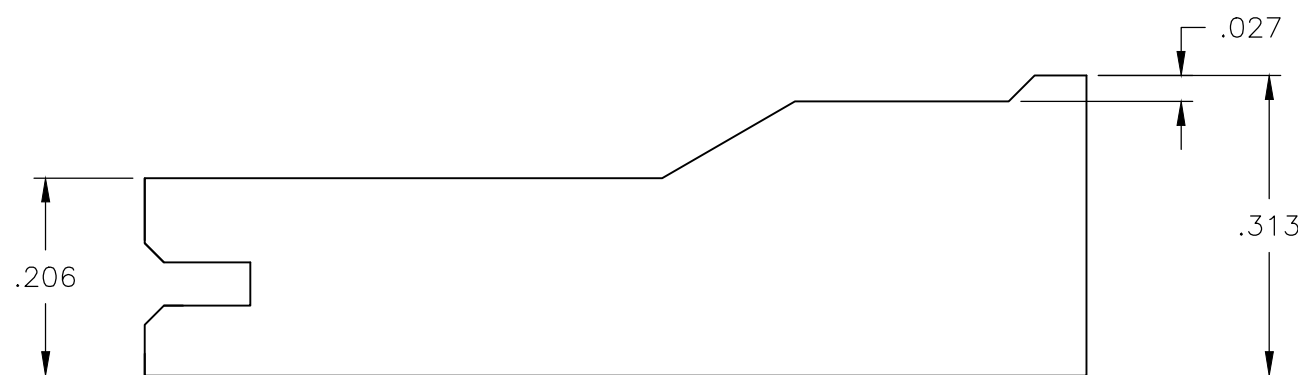
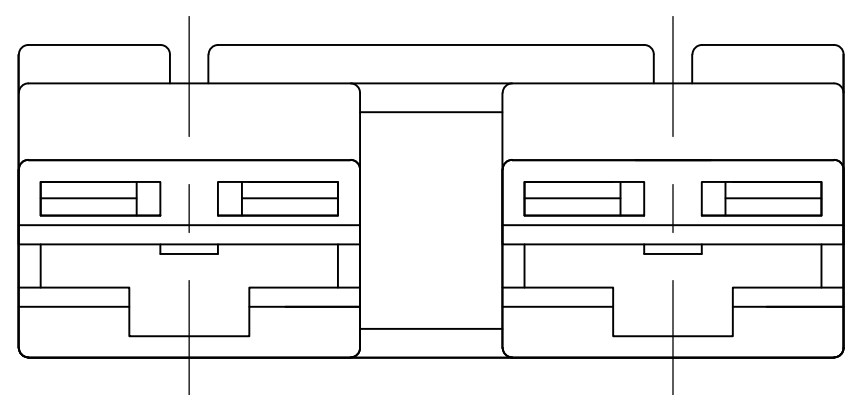
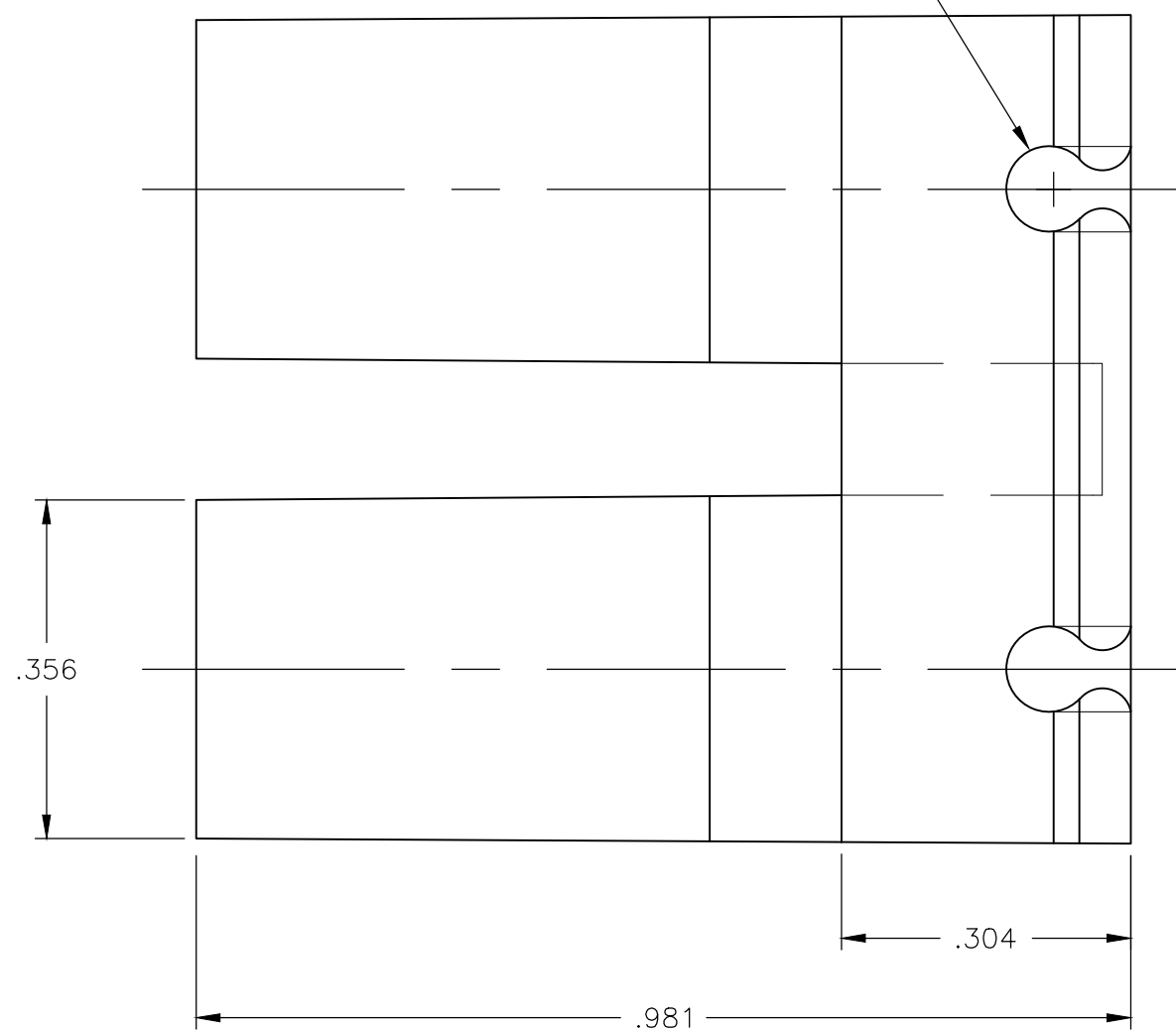


THIS DRAWING IS UNPUBLISHED. RELEASED FOR PUBLICATION  
 © COPYRIGHT - By -TE ALL RIGHTS RESERVED.

REVISIONS					
P	LTR	DESCRIPTION	DATE	DWN	APVD
	A9	REVISED PER ECR-18-018117	12MAR2019	BW	DS

- 1 USE WITH TERMINAL 63609.
- 2 OBSOLETE PARTS

WIRE RETENTION FEATURE  
 FOR USE WITH 22 AWG, UL-1569 WIRE



	NATURAL	66 NYLON V0, GWT NATURAL	1969295-4
SUPERSEDED BY 1969295-4	NATURAL	6/6 NYLON, V-2	<del>1969295-3</del>
	RED	6/6 NYLON, V-0	<del>1969295-2</del>
SUPERSEDED BY 1969295-4	NATURAL	6/6 NYLON, V-0	<del>1969295-1</del>
	COLOR	MATERIAL	PART NO

THIS DRAWING IS A CONTROLLED DOCUMENT.		DWN	S SCHLEGEL	7/7/09	TE Connectivity HOUSING, RECPT, 2 CIRCUIT, .250 SERIES, SPECIAL							
DIMENSIONS:		CHK	P DESANTIS	7/7/09					NAME			
INCHES		APVD	P DESANTIS	7/7/09					PRODUCT SPEC			
		TOLERANCES UNLESS OTHERWISE SPECIFIED:		APPLICATION SPEC					RESTRICTED TO			
MATERIAL		FINISH		WEIGHT	SIZE	CAGE CODE	DRAWING NO	RESTRICTED TO				
-		-		-	A2	00779	C=1969295	-				
CUSTOMER DRAWING				SCALE	6:1	SHEET	1 of 1	REV				
								A9				

## X-ON Electronics

Largest Supplier of Electrical and Electronic Components

*Click to view similar products for [Headers & Wire Housings](#) category:*

*Click to view products by [TE Connectivity](#) manufacturer:*

Other Similar products are found below :

[892-18-020-10-001101](#) [58102-G61-06LF](#) [582553-1](#) [0009485154](#) [009176003701906](#) [0050291907](#) [LY20-4P-DT1-P1E-BR](#) [02.125.8002.8](#)  
[609-3404](#) [61062-3](#) [61082-181009](#) [622-3653LF](#) [63453-116](#) [636-1030](#) [636-1427](#) [636-3427](#) [636-4007](#) [641938-9](#) [641991-4](#) [644827-2](#) [65817-010LF](#) [65817-015LF](#) [65863-015LF](#) [66207-023LF](#) [67095-007LF](#) [67601157](#) [68645-018](#) [68648-049](#) [70.362.1628.0](#) [70-4210](#) [70-4226B](#) [70-4853B](#) [707-5020](#) [707-5028](#) [71.350.2428.0](#) [71918-208LF](#) [71961-016LF](#) [733-134](#) [733-162](#) [754199-000](#) [760-3052](#) [787-8014-00](#) [79531-3000](#)  
[FCN-360C032-B](#) [FCN-367T-T012/H](#) [FCN-723D010/2](#) [80.063.4001.1](#) [800-90-001-10-001000](#) [800-90-010-10-002000](#) [801-43-002-10-013000](#)