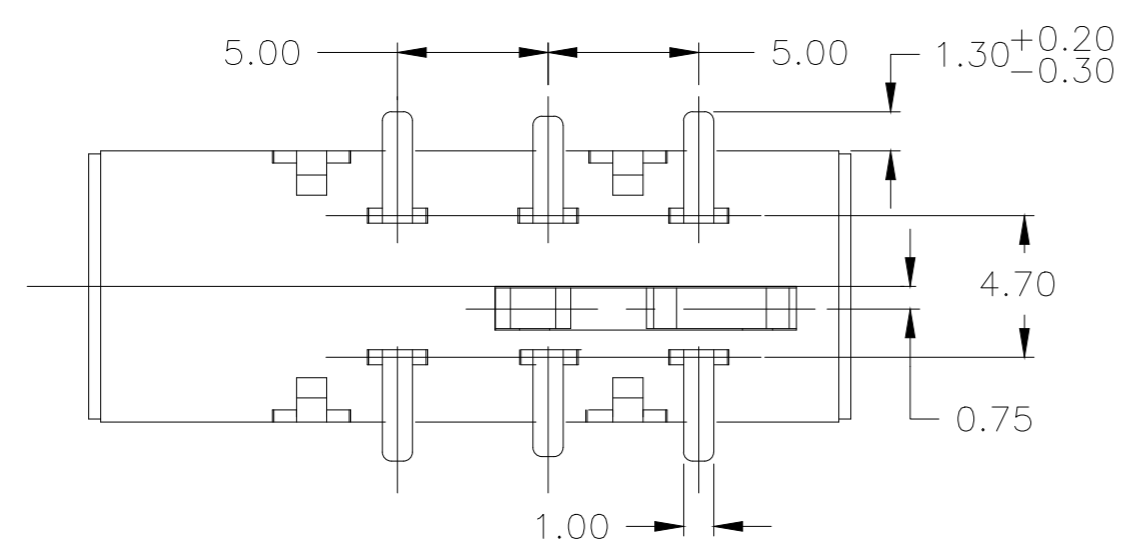
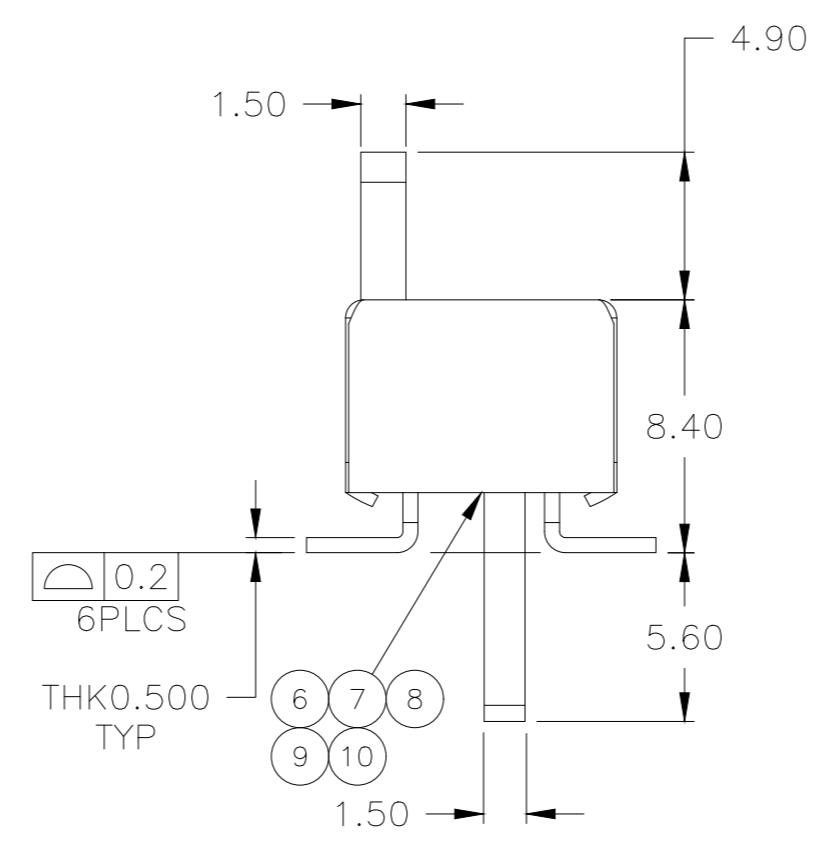
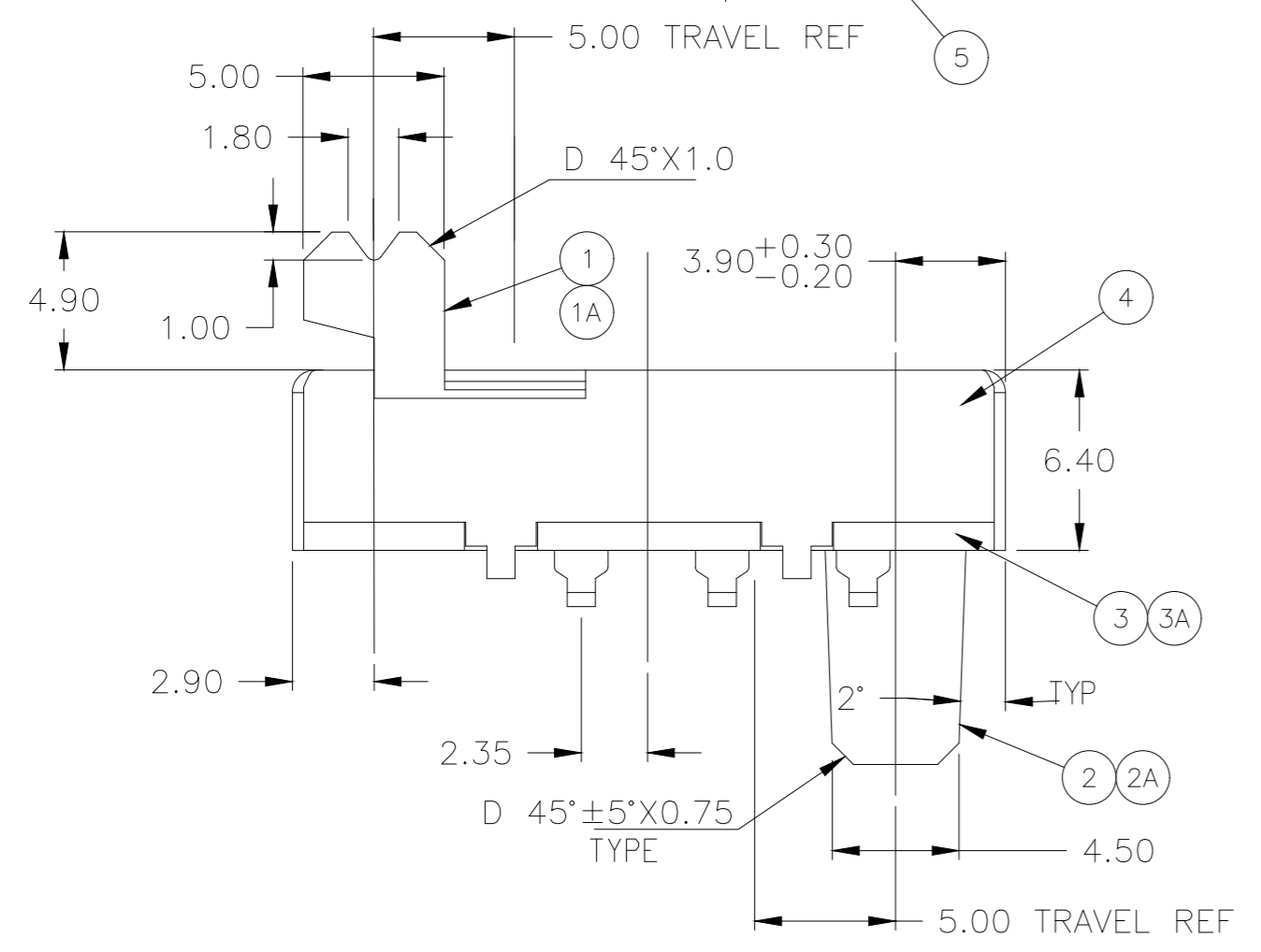
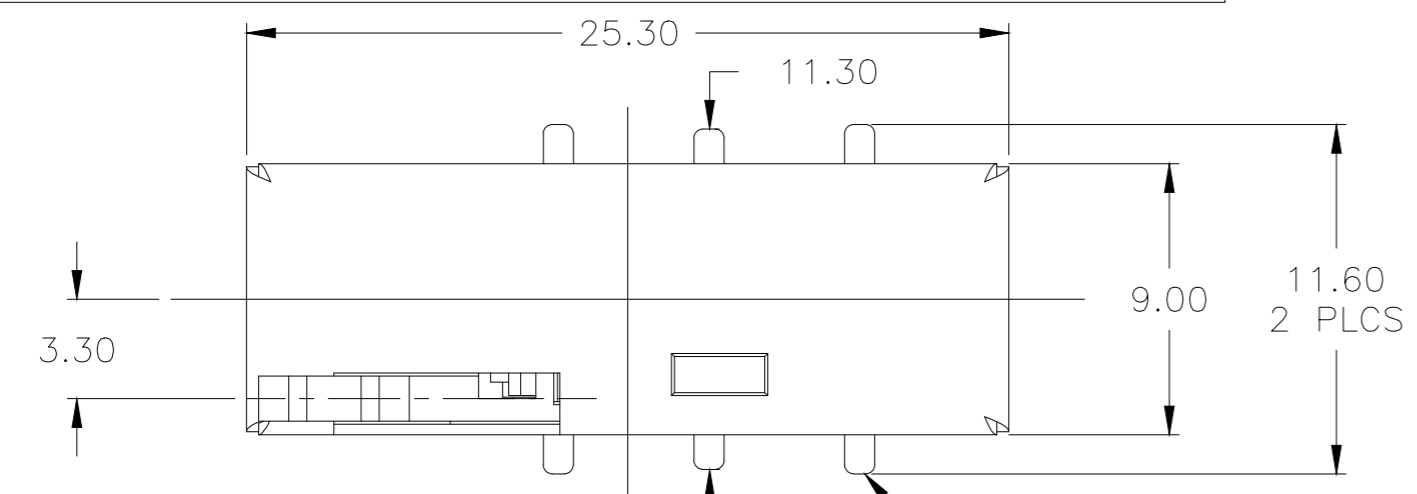


THIS DRAWING IS UNPUBLISHED. RELEASED FOR PUBLICATION
 © COPYRIGHT - By - ALL RIGHTS RESERVED.

REVISIONS				
P	LTR	DESCRIPTION	DATE	DWN APVD
J		REVISED PER ECO-17-007607	29MAY2017	RK AS



Electrical:
 Contact Rating, 24vac at 0.5amp (power factor 0.4) and inrush current of 2.5 amp (power factor 0.4)
 Contact resistance, 30 milliohms max
 Insulation Resistance, 500 Megohm min
 Dielectric strength, 500 V RMS@ sea level
 Life expectancy, 2,000 cycles

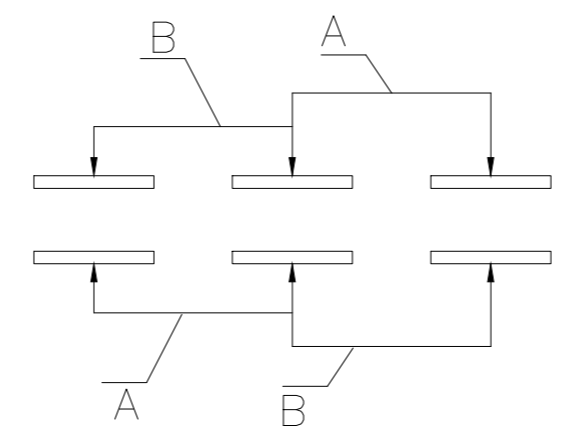
Environmental:
 Operating Temperature, -20 to +85° C
 Storage Temperature, -20 to +85° C
 Resistance to Solder Heat, Per 109-201, condition A
 Omit section 3.3
 Time over liquidus (217°C) 20 seconds max
 Peak temperature 225±5°C

1. ALL MATERIALS AND FINISHES SHALL COMPLY WITH EU DIRECTIVE 2002/95/EC OF 27JAN2003 (ROHS)

2. NOTE DELETED

3. RESISTANCE TO SOLDER HEAT, PER 109-201 CONDITION B.

AR	NONE	GREASE	ACTUATOR LUBRICATION	10
-	NONE	GREASE	CONTACT LUBRICATION	9
1	PASIVATE	STAINLESS STEEL	SPRING PLATE	8
1	NONE	MUSIC WIRE	COIL SPRING	7
2	AG OVER NICKEL	COPPER TI	MOVING CONTACT	6
6	AG OVER NICKEL	COPPER	FIXED CONTACT/TERMINAL	5
1	NICKEL	COLD ROLLED STEEL	FRAME	4
1	BLACK	LCP UL94 V-0 30% GF	BOARD	3A
-	BLACK	PA66 UL 94HB, 15% GF	BOARD	3
1	BLACK	LCP UL94 V-0 30% GF	ACTUATOR (LOWER)	2A
-	BLACK	PA66 UL 94HB, 15% GF	ACTUATOR (LOWER)	2
1	BLACK	LCP UL94 V-0 30% GF	ACTUATOR (UPPER)	1A
-	BLACK	PA66 UL 94HB, 15% GF	ACTUATOR (UPPER)	1
-4	FINISH	MATERIAL	PART DESCRIPTION	ITEM NO.



NON SHORTING SCHEMATIC

THIS DRAWING IS A CONTROLLED DOCUMENT.		DWN M.BINNER	04SEP2007	SOLDER HEAT		TAPE & REEL	N/A	1977144-4	
DIMENSIONS: mm		CHK M.SARVER	-	PACKAGING		INSPECTION STATUS	PART NUMBER		
TOLERANCES UNLESS OTHERWISE SPECIFIED:		APVD -	-	PRODUCT SPEC		NAME			
0 PLC ± -		APPLICATION SPEC		SLIDE SWITCH, DPDT, SMT					
1 PLC ± -		SIZE		CAGE CODE		DRAWING NO		RESTRICTED TO	
2 PLC ± 0.20		WEIGHT		0		A2 00779		C=1977144	
3 PLC ± 0.05		CUSTOMER DRAWING		SCALE		4:1		SHEET	
4 PLC ± -		FINISH		-		1 of 2		REV	
ANGLES ± 3°		MATERIAL		-		J			

4 3 2 1

THIS DRAWING IS UNPUBLISHED. RELEASED FOR PUBLICATION. ALL RIGHTS RESERVED.

REVISIONS				
P	LTR	DESCRIPTION	DATE	APVD
-	-	SEE SHEET 1	-	-

44.5(ref)
2.3(ref)
100(ref)
330(ref)

SEE DETAIL A

4(ref) 2(ref) 24(ref) 1.5(ref)
44(ref) 40.4(ref)

REEL IDENTIFICATION LABEL. REF (SEE. NOTE 5)

19.4(ref)

SEE DETAIL A
4:1

NOTES

1. TAPE, REEL, AND TAPING SHALL MEET THE REQUIREMENTS OF EIA-481-2.
2. EMBOSSED TAPE SHALL BE CONDUCTIVE TYPE.
3. FOR PART ORIENTATION IN TAPE SEE DETAIL A.
4. REEL SHALL CONTAIN 130 PIECES SWITCH.

5. DETAILS OF INTERNAL LABEL ON REEL:
 TYCO ELECTRONICS
 P/N:1977144-3 & -4
 QTY:130PCS
 DATE CODE:XXXX

THIS DRAWING IS A CONTROLLED DOCUMENT.		DWN M.BINNER	04SEP2007	TE Connectivity	
DIMENSIONS: mm		CHK M.SARVER	APVD -		
		TOLERANCES UNLESS OTHERWISE SPECIFIED: 0 PLC ± - 1 PLC ± - 2 PLC ± 0.20 3 PLC ± 0.05 4 PLC ± - ANGLES ± 3° FINISH -		PRODUCT SPEC -	RESTRICTED TO -
MATERIAL -		WEIGHT -	SIZE A2	CAGE CODE 00779	DRAWING NO C=1977144
CUSTOMER DRAWING			SCALE 4:1	SHEET 2 of 2	REV J

1471-9 (1/15)

1977144

X-ON Electronics

Largest Supplier of Electrical and Electronic Components

Click to view similar products for [TE Connectivity](#) manufacturer:

Other Similar products are found below :

[D38999/24FJ4AN](#) [570416-000](#) [CLTEQ-M81CE-SSRELAY-4-20V](#) [4-1195131-0](#) [650069-000](#) [SMD100-2](#) [358838-000](#) [CB-1022B-78](#)
[RM707012](#) [RP410012](#) [MMS42](#) [1-640426-8](#) [2EDL4CM](#) [DTS20W19-11PD-3028-LC](#) [RM202615](#) [NC6-P104-06](#) [MSPS103B](#) [DTS26F21-](#)
[41HE-LC](#) [DTS26F21-41AE](#) [DTS26F21-41PE-LC](#) [DTS26F21-11SE-3028-LC](#) [30DCB6](#) [1932144-1](#) [293545-4](#) [LVR125S](#) [MS27466T25F4PB](#)
[CKB-38-78010](#) [TR04AI-TINELLOCKRING](#) [1206SFF150F/63-2](#) [D38999/20JB35HA](#) [TE1500A2R2J](#) [D38999/20WC8BB](#) [DTS24F19-11SC-](#)
[3028-LC](#) [D38999/24WG11HA](#) [D38999/24WG11HN](#) [MS27467T21F11H](#) [DJT16E21-11HA](#) [MS27467T21F35J](#) [MS27467T21F11J](#)
[MS27467T21F16H-LC](#) [MS27467T21F35H](#) [MS27467T21F41H-LC](#) [1206SFH150F/24-2](#) [RP330024](#) [DJT16E21-11PA-LC](#) [DJT16E21-11HA-](#)
[LC](#) [DJT16E21-11AA](#) [MS27467T21B11JA](#) [DJT16E21-11JA](#) [MS27467T21B11JA-LC](#)