

C. Webster 11-30-90  
APPROVED/DATE

0  
REV

SAFETY ORGANIZATION(S):

THIS FILTER HAS BEEN FORMALLY RECOGNIZED, CERTIFIED OR APPROVED BY THE LISTED AGENCY. THEREFORE, ALL TEST/REQUIREMENTS SPECIFIED IN THE LATEST REVISION OF THE FOLLOWING AGENCY STANDARDS HAVE BEEN MET.

UL RECOGNIZED  
CSA CERTIFIED (PENDING)  
VDE APPROVED (PENDING)

UL 1283  
CSA 22.2, NO.0,0,4,8  
VDE 565-3

OPERATING SPECIFICATIONS:

LINE VOLTAGE/CURRENT:  
LINE FREQUENCY:  
MAX. LEAKAGE CURRENT, EACH  
LINE TO GROUND  
OPERATING AMBIENT TEMP. RANGE:  
IN AN AMBIENT,  $T_0$ , HIGHER THAN 40°C, THE MAXIMUM OPERATING CURRENT,  $I_0$ , IS AS FOLLOWS:

1 AMP., 120/250 VAC  
1 AMP./40°C, 250 VAC  
50-60Hz  
.25 mA @ 120V 60 Hz  
.48 mA @ 250V 50 Hz  
-10°C TO +40°C @ RATED CURRENT,  $I_r$

$I_0 = I_r \sqrt{\frac{85-T_0}{45}}$

RELIABILITY SPECIFICATIONS:

STORAGE TEMPERATURE:  
HUMIDITY:  
CURRENT OVERLOAD TEST:  
TEST SPECIFICATIONS:  
INDUCTANCE:  
CAPACITANCE: (MEASURED @ 1 KHz, 0.25 VAC MAX., 25°C ±1°C)  
LINE TO GROUND:  
LINE TO LINE:  
DISCHARGE RESISTOR  
LINE/GROUND AND LINE/LINE  
INSULATION RESISTANCE

1.86 mH NOMINAL  
-40°C TO +85°C  
21 DAYS @ 40°C 95% RH  
6 TIMES RATED CURRENT FOR 8 SECONDS  
1.86 mH NOMINAL  
0.003µF ±20%  
.81µF ±20%  
330KΩ  
6000 MΩ (MIN) AT 100 VDC  
20°C AND 50% RH

RECOMMENDED RECEIVING INSPECTION HIPOT:

2250 VDC FOR 1 MINUTE  
1450 VDC FOR 1 MINUTE

FILTER APPROVAL:

THE BEST WAY TO SELECT AND QUALIFY A FILTER IS FOR YOUR ENGINEERING TO TEST THE UNIT IN YOUR EQUIPMENT.

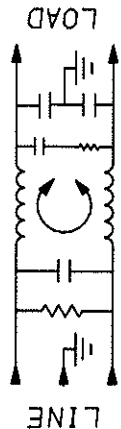
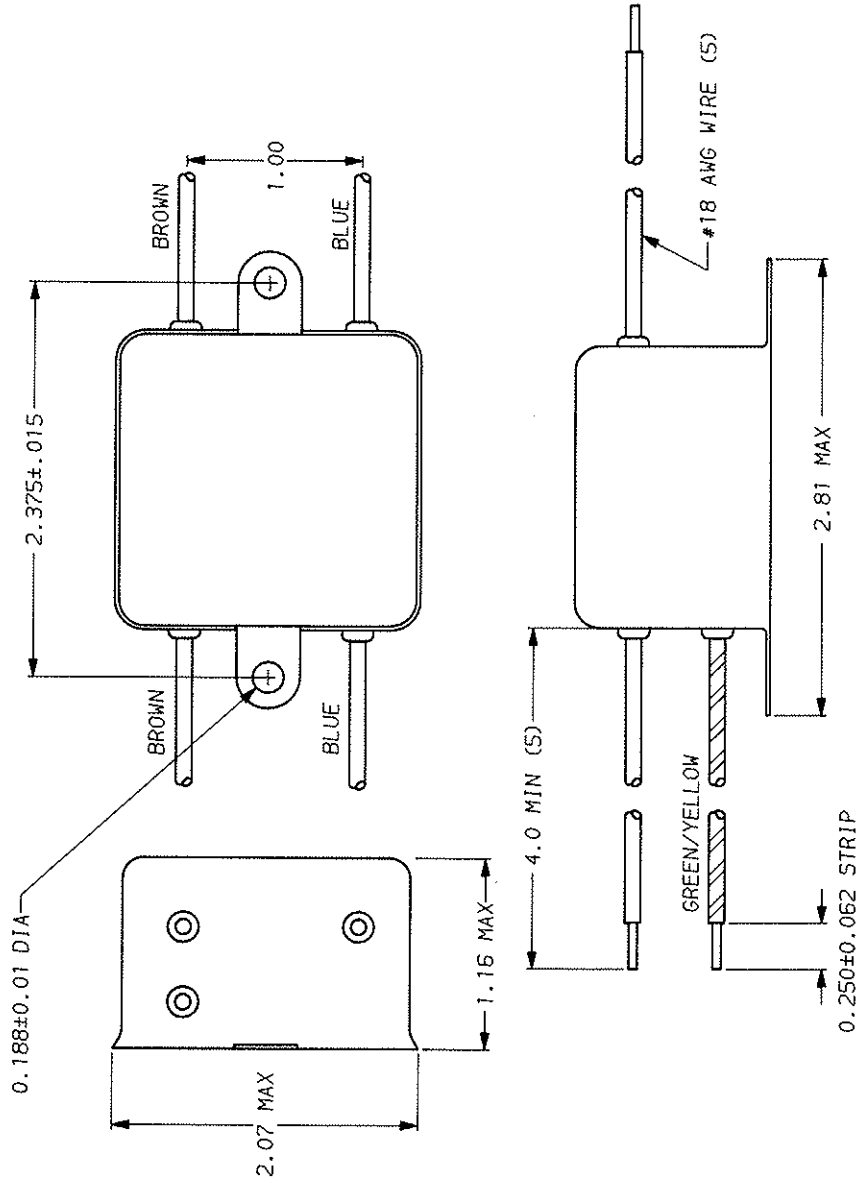
TOLERANCE EXCEPT AS NOTED

DECIMAL: .XX .XX .X ANGLES  
ENGLISH: ±.025 ± 1°  
METRIC: ±

50Ω - 50Ω (MINIMUM) INSERTION LOSS

FREQUENCY MHz	.15	.5	1	2	5	10	20	30
COMMON dB	18	32	40	45	45	45	52	40
DIFF. dB	20	50	65	60	53	48	48	48

This document is proprietary to CORCOM INC. and is not to be reproduced nor used for manufacturing purposes except on CORCOM's order or prior written consent.



POWER LINE FILTER

SCALE: NTS 11-5-90  
REV. BY: CFM  
REV. NO.: 1EDK3.00

## X-ON Electronics

Largest Supplier of Electrical and Electronic Components

*Click to view similar products for [Power Line Filters](#) category:*

*Click to view products by [TE Connectivity](#) manufacturer:*

Other Similar products are found below :

[6609019-3](#) [6609026-5](#) [6609030-6](#) [6609973-2](#) [D30A](#) [7-1609090-5](#) [F2810](#) [F4456A](#) [F7382Z](#) [F7863Z](#) [FAHAV3100ZC000](#) [806276](#) [FN2020B-1-06](#) [FN2080B-10-06](#) [FN2410H-32-33](#) [FN2410H-80-34](#) [FP144](#) [FS4153-20-06](#) [FS4353-500-99](#) [12-MMB-030-11-D](#) [DB4-393](#) [15811T200](#) [20B1](#) [LC630](#) [2B1](#) [1609080-2](#) [1609993-8](#) [1-6609070-1](#) [F1100AA02](#) [F1150CC10](#) [F1500CA10](#) [F1500CA15](#) [F4041Z](#) [F7585E](#) [1B1](#) [FN2070A-16-06](#) [FN2090A-20-06](#) [FN2090B-12-06](#) [FN2090Z-1-06](#) [FN2410H-25-33](#) [FN2410H-60-34](#) [FN2410H-8-44](#) [FN2412H-8-44](#) [FN323B-6-01](#) [FN3258H-130-35](#) [FN610R-3-06](#) [20EHQ7](#) [20EHZ7](#) [20K1](#) [30B6](#)