

# M35/16



TE Connectivity has acquired the DIN Rail Terminal Block product range from ABB

Products → Low Voltage Products and Systems → Connection Devices → Terminal Blocks → SNA Series

## General Information

<b>Extended Product Type:</b>	M35/16
<b>Product ID:</b>	1SNA115124R0700
<b>EAN:</b>	3472591151244
<b>Catalog Description:</b>	M35/16 Screw Clamp Terminal Blocks - Feed-through - Grey
<b>Long Description:</b>	- Closed terminal block: no end section needed, optimized rigidity, - Flexibility: snap onto symmetrical and asymmetrical rails, - Use of Jumper bars requires the user to cut out the partition.

## Ordering

<b>Color:</b>	Grey
<b>Minimum Order Quantity:</b>	20 piece
<b>Customs Tariff Number:</b>	85369010

## Popular Downloads

<b>Data Sheet, Technical Information:</b>	1SNC160019C0202
<b>Instructions and Manuals:</b>	1SNC160019C0202

## Dimensions

<b>Product Net Width:</b>	16 mm
<b>Product Net Height:</b>	49 mm
<b>Product Net Depth / Length:</b>	46.5 mm
<b>Product Net Weight:</b>	30 g

## Technical

<b>Rated Cross-Section:</b>	35 mm <sup>2</sup>
<b>Spacing:</b>	16 mm
<b>Connection Type:</b>	Screw clamp
<b>Function:</b>	Feed-through
<b>Number of Levels:</b>	1
<b>Connecting Capacity Main Circuit:</b>	Screw Clamp / Flexible 1x 6 ... 35 mm <sup>2</sup> Screw Clamp / Rigid 1x 6 ... 50 mm <sup>2</sup> Screw Clamp / With Insulated Ferrule 1x 35 mm <sup>2</sup>
<b>Gauge Type:</b>	B9
<b>Rated Current (I<sub>n</sub>):</b>	Main Circuit 125 A
<b>Rated Short-time Withstand Current (I<sub>cw</sub>):</b>	for 1 s 4200 A

<b>Rated Voltage (U<sub>r</sub>):</b>	1000 V
<b>Rated Impulse Withstand Voltage (U<sub>imp</sub>):</b>	8000 V
<b>Dielectric Test Voltage:</b>	3500 V
<b>Pollution Degree:</b>	3
<b>Degree of Protection:</b>	acc. to IEC 60529, IEC 60947-1, EN 60529 Main Terminals IP20
<b>Insulation Material:</b>	Polyamide
<b>Mounting on DIN Rail:</b>	G32 (32 x 15 mm Mounting Rail) acc. to IEC 60715 TH35-7.5 (35 x 7.5 mm Mounting Rail) acc. to IEC 60715 TH35-15 (35 x 15 mm Mounting Rail) acc. to IEC 60715
<b>Wire Stripping Length:</b>	17.0 mm
<b>Recommended Screw Driver:</b>	6.5 ... 7 mm
<b>Tightening Torque:</b>	acc. IEC 60947-1 2.8 N·m Manufacturer 3 N·m

## Technical UL/CSA

<b>Maximum Operating Voltage UL/CSA:</b>	Main Circuit 600 V
<b>Connecting Capacity Main Circuit UL/CSA:</b>	Screw Clamp / Rigid 1x 10 ... 0 AWG
<b>Connecting Capacity UL/CSA:</b>	Screw Clamp / Rigid 10 ... 0 AWG Stranded 0 AWG
<b>Flammability According to UL94:</b>	V0

## Environmental

<b>Ambient Air Temperature:</b>	Operation -55 ... +110 °C Storage -55 ... +110 °C
<b>RoHS Status:</b>	Following EU Directive 2002/95/EC August 18, 2005 and amendment

## Certificates and Declarations (Document Number)

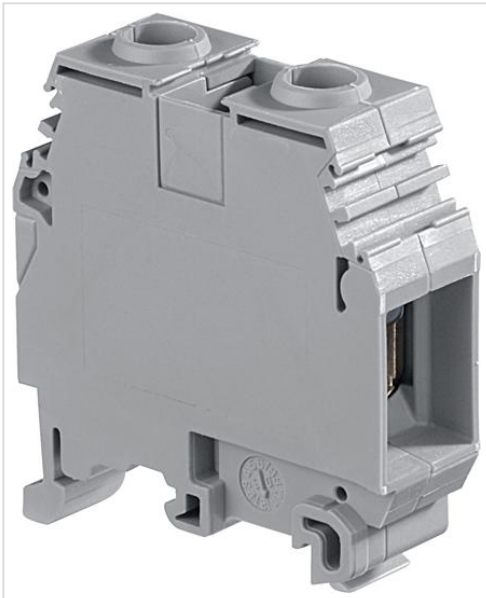
<b>CB Certificate:</b>	1SND161028A0203
<b>CSA Certificate:</b>	1SND161052A0202
<b>cUL Certificate:</b>	1SND161001A0209
<b>Declaration of Conformity - CE:</b>	1SND225014U1000
<b>EAC Certificate:</b>	1SND161009A1100
<b>Environmental Information:</b>	1SND220001E1002
<b>Instructions and Manuals:</b>	1SNC160019C0202
<b>RMRS Certificate:</b>	1SND161007A1101
<b>RoHS Information:</b>	1SND230023F0208

## Classifications

<b>Object Classification Code:</b>	X
<b>E-nummer:</b>	2925516
<b>ETIM 4:</b>	EC000897 - Feed-through terminal block
<b>ETIM 5:</b>	EC000897 - Feed-through terminal block
<b>ETIM 6:</b>	EC000897 - Feed-through terminal block

## Container Information

<b>Package Level 1 Units:</b>	20 piece
<b>Package Level 1 Width:</b>	81 mm
<b>Package Level 1 Depth / Length:</b>	200 mm
<b>Package Level 1 Height:</b>	53 mm
<b>Package Level 1 Gross Weight:</b>	0.62 kg
<b>Package Level 1 EAN:</b>	3472591151244
<b>Package Level 2 Units:</b>	300 piece
<b>Package Level 2 Width:</b>	300 mm
<b>Package Level 2 Depth / Length:</b>	500 mm
<b>Package Level 2 Height:</b>	150 mm
<b>Package Level 2 Gross Weight:</b>	15.350 kg
<b>Package Level 3 Units:</b>	14400 piece
<b>Product Packing Type:</b>	Box



## X-ON Electronics

Largest Supplier of Electrical and Electronic Components

*Click to view similar products for [DIN Rail Terminal Blocks](#) category:*

*Click to view products by [TE Connectivity](#) manufacturer:*

Other Similar products are found below :

[00110420202](#) [8WA1011-1BH23](#) [9123140000](#) [RBO 5-T-B-HEX](#) [HSL-TB64-DIN](#) [90.070](#) [90.202](#) [912314](#) [260-301\\_NR](#) [280-560](#) [280-564](#)  
[281-611/281-542](#) [281-673/281-411](#) [281-994](#) [283-317](#) [283-607](#) [264-724](#) [264-726](#) [280-530](#) [280-555](#) [280-619](#) [281-610](#) [281-622/281-417](#) [284-](#)  
[317](#) [2907033](#) [35956](#) [USK 10](#) [102510](#) [5520682](#) [EMH 25-ZE30](#) [1SNK705210R0000](#) [1SNK705151R0000](#) [1SNK705020R0000](#)  
[1SNK506066R0000](#) [1SNK506061R0000](#) [1SNK506012R0000](#) [1SNK505060R0000](#) [UM 45-SEFE M.NUT BK](#) [1SNK506013R0000](#)  
[1SNK506030R0000](#) [1SNK506062R0000](#) [1SNK506065R0000](#) [1SNK508062R0000](#) [1SNK508065R0000](#) [1SNK508066R0000](#)  
[1SNK705010R0000](#) [1SNK705012R0000](#) [1SNK705150R0000](#) [1SNK705152R0000](#) [1SNK705310R0000](#)