

4

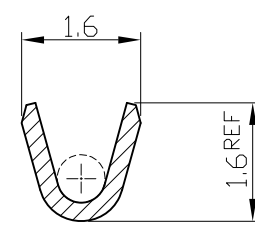
3

2

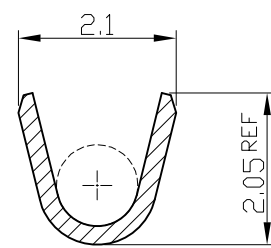
1

THIS DRAWING IS UNPUBLISHED. RELEASED FOR PUBLICATION  
 © COPYRIGHT BY TYCO ELECTRONICS CORPORATION. ALL RIGHTS RESERVED.

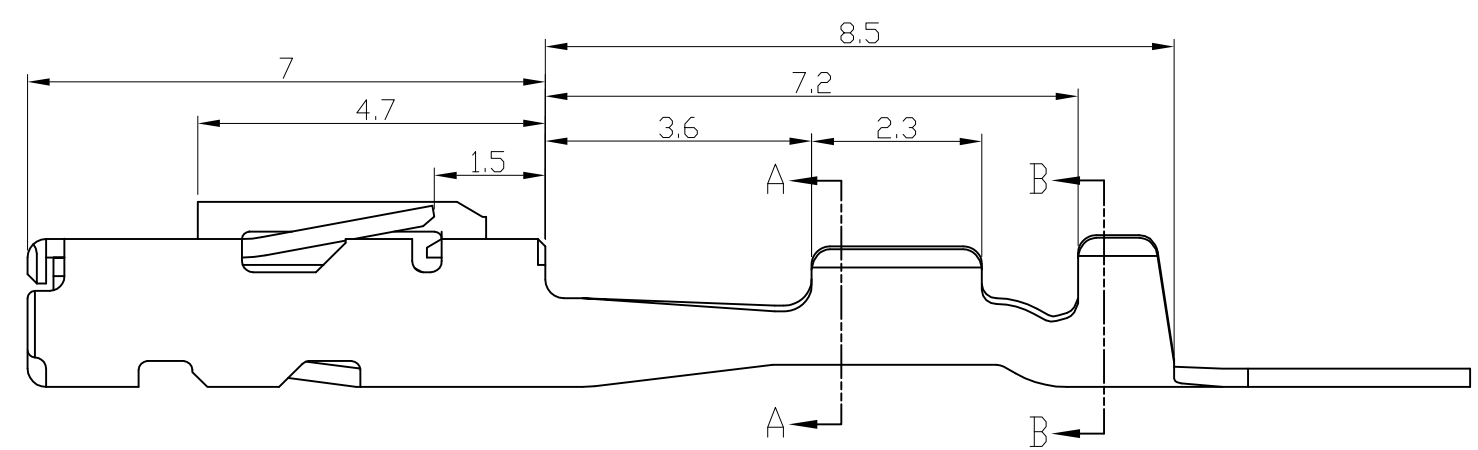
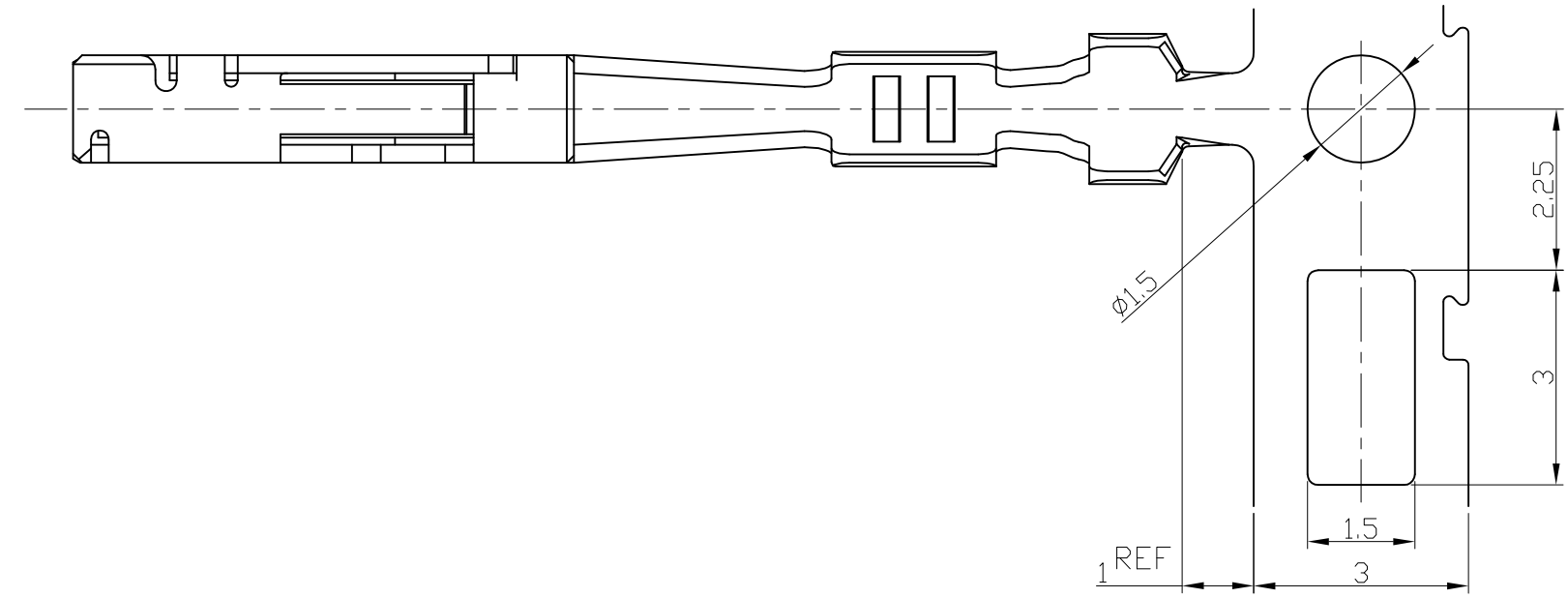
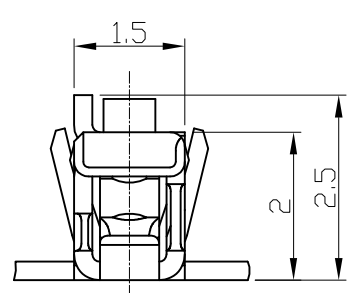
LOC	DIST	REVISIONS					
		P	LTR	DESCRIPTION	DATE	DWN	APVD
DS	-		A	RELEASED	22.JUN.'09	KT	HG
			A1	REVISED (ECR-09-018695)	25.SEP.'09	KT	HG



SECTION A-A



SECTION B-B



NOTE

- 1. GENERAL TOLERANCE:  $\pm 0.3$ ,  $\pm 3^\circ$
- 2. APPLICABLE WIRE RANGE;

Conductor		Insulation Diameter	
Nominal Size	Calculated Cross-Section Area (mm <sup>2</sup> )	Minimum (mm)	Maximum (mm)
0.13	0.14	0.9	0.95
0.22	0.24	1.0	1.05

3. APPLICATOR FEED: 7.5mm

PRE-TIN	COPPER ALLOY	2005097-1
FINISH	MATERIAL	PART NUMBER

<small>THIS DRAWING IS A CONTROLLED DOCUMENT FOR TYCO ELECTRONICS CORPORATION. IT IS SUBJECT TO CHANGE AND THE CONTROLLING ENGINEERING ORGANIZATION SHOULD BE CONTACTED FOR THE LATEST REVISION.</small>		DWN <b>KT JUNG</b> CHK <b>JW JUNG</b> APVD <b>HG CHO</b> PRODUCT SPEC		AMP KOREA. Kyungsan, Korea	
DIMENSIONS: MM		TOLERANCES UNLESS OTHERWISE SPECIFIED:		NAME 025 TH RECEPTACLE CONTACT (SS)	
		APPLICATION SPEC		SIZE <b>A3</b>	
MATERIAL SEE TABLE		FINISH SEE TABLE		CAGE CODE <b>00779</b>	
		WEIGHT <b>C=2005097</b>		DRAWING NO <b>2005097</b>	
		CUSTOMER DRAWING		RESTRICTED TO -	
		SCALE <b>10/1</b>		SHEET 1 OF 1 REV A1	

## X-ON Electronics

Largest Supplier of Electrical and Electronic Components

*Click to view similar products for [Automotive Connectors](#) category:*

*Click to view products by [TE Connectivity](#) manufacturer:*

Other Similar products are found below :

[003-018-000](#) [60993906-B](#) [M902-2131](#) [M902-2161](#) [M902-2344](#) [72.330.1035.1](#) [73.353.4028.0](#) [F166900](#) [F358300-B](#) [F407400](#) [776880-1](#)  
[827153-1](#) [8N1515-32-24P](#) [9-1326729-8](#) [925474-1](#) [928905-1](#) [964562-4](#) [968782-1](#) [98891-1012](#) [12004475-L](#) [12020308](#) [12041318-B](#)  
[12052466](#) [12059716](#) [12064869](#) [12015909](#) [1-21030-1](#) [12041254](#) [12041318](#) [12047946-B](#) [12110546-B](#) [12131792](#) [12084688](#) [12092346](#)  
[HD34-18-14PT](#) [HD46-24-23SN-059](#) [HDB36-24-16PN-059](#) [HDP26-24-9SE-L015](#) [12185280](#) [12185550](#) [12336-12](#) [12191172-B](#) [12S](#)  
[13545280](#) [13577943](#) [13681974](#) [13737722-B](#) [13830674](#) [13832576](#) [13849772](#)