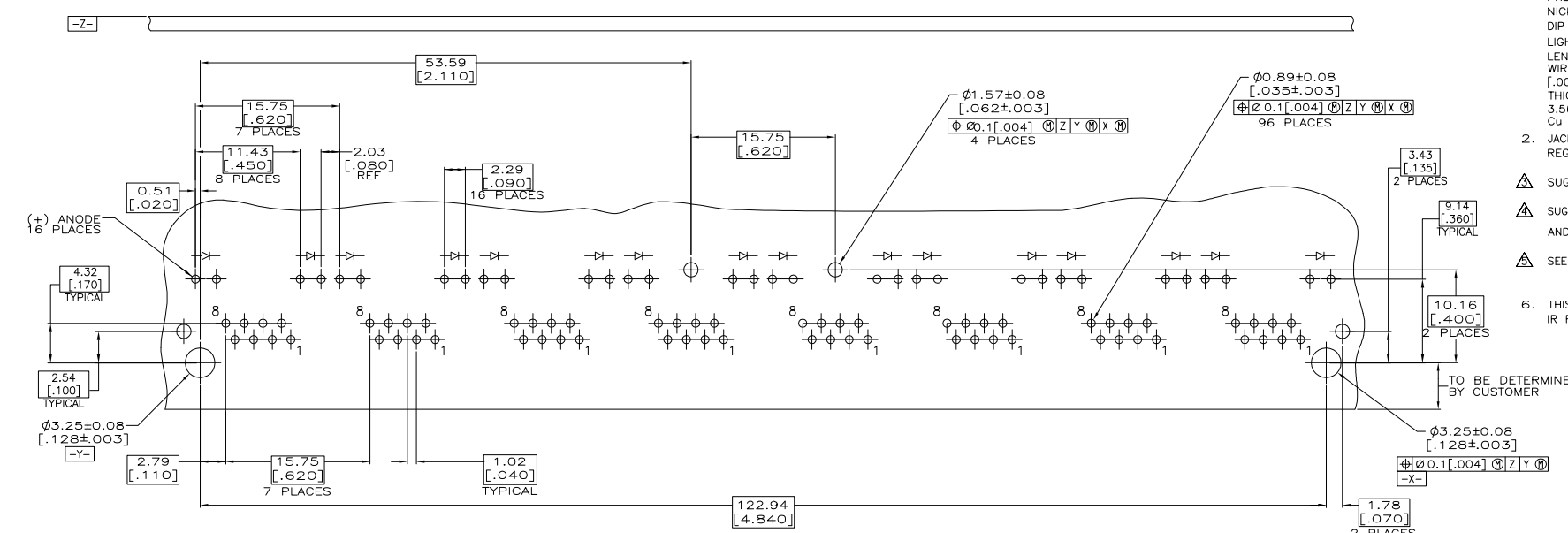


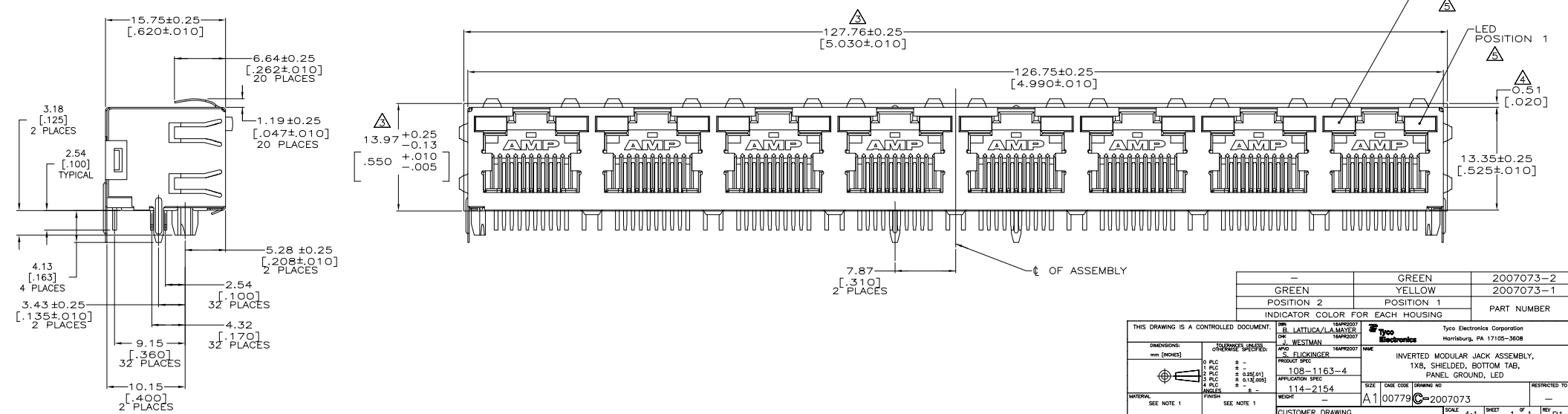
THIS DRAWING IS UNPUBLISHED. RELEASED FOR PUBLICATION BY TYCO ELECTRONICS CORPORATION. ALL RIGHTS RESERVED.

LOC		REV		REVISIONS	
AA	00	DATE	DESCRIPTION	DATE	BY
B1		22APR2009	TY SY		

- MATERIAL:
HOUSING - HIGH TEMPERATURE THERMOPLASTIC, BLACK, UL94V-0.
TERMINALS - 0.36[.014] THICK PHOS BRONZE PLATED WITH 1.27 μ m[.000050] MIN THICK HARD GOLD IN LOCALIZED AREA AND 3.81 μ m [.000150] MIN THICK MATTE TIN IN SOLDER AREA OVER 1.27 μ m[.000050] MIN THICK NICKEL UNDERPLATE. CONTACT LUBE ON GOLD PLATED PORTION
SHIELD - 0.196[.0077] THICK COPPER ALLOY PREPLATED WITH 1.27 μ m[.000050] MINIMUM SATIN NICKEL WITH 2.03 μ m[.000080] MINIMUM HOT TIN DIP ON PCB GROUND TABS.
LIGHT EMITTING DIODE (LED) - DIFFUSED EPOXY LENS, 0.51 x 0.51[.020 x .020] CARBON STEEL WIREFRAME LEADS PREPLATED WITH 8.89 μ m [.0003500] THICK Sn/Cu OVER 2.03 μ m[.000080] THICK Ag OVER 1.02 μ m[.000040] THICK Cu 3.56 μ m[.000140] THICK Ni OVER 1.02 μ m[.000040] Cu UNDERPLATE.
- JACK CAVITY CONFORMS TO FCC RULES AND REGULATIONS PART 68, SUBPART F.
- SUGGESTED PANEL OPENING DIMENSIONS.
- SUGGESTED CLEARANCE BETWEEN TOP OF CONNECTOR AND TOP PANEL OPENING.
- SEE TABLE FOR COLOR OF LEDS.
- THIS MODULAR JACK WITH INTEGRATED LED IS NOT IR REFLOW SOLDERING PROCESS COMPATIBLE.



SUGGESTED PRINTED CIRCUIT BOARD LAYOUT
COMPONENT SIDE



	GREEN	YELLOW	2007073-2
INDICATOR COLOR FOR EACH HOUSING	GREEN	YELLOW	2007073-1
	POSITION 2	POSITION 1	PART NUMBER

THIS DRAWING IS A CONTROLLED DOCUMENT.		DATE: 18APR2007	BY: B. LATTUCA/LA.MAYER	TYCO ELECTRONICS CORPORATION
DRAWN BY: S. BLICKINGER		DATE: 18APR2007	BY: S. BLICKINGER	Harrisburg, PA 17105-3608
DIMENSIONS: mm (INCHES)	CUSTOMER APPROVED:	PRODUCT SPEC:	108-1163-4	INVERTED MODULAR JACK ASSEMBLY, 1X8, SHIELDED, BOTTOM TAB, PANEL GROUND, LED
0 P.C. ± -	1 P.C. ± -	2 P.C. ± 0.25(0.1)	3 P.C. ± 0.13(0.005)	APPLICATION SPEC:
MATERIAL:	FINISH:	WEIGHT:	114-2154	SIZE: A1
SEE NOTE 1	SEE NOTE 1	SCALE:	4:1	SHEET 1 OF 1
CUSTOMER DRAWING		REV: C	2007073	REV: B1

X-ON Electronics

Largest Supplier of Electrical and Electronic Components

Click to view similar products for [Modular Connectors / Ethernet Connectors](#) category:

Click to view products by [TE Connectivity](#) manufacturer:

Other Similar products are found below :

[8949-H88/06BLKA/SN](#) [74441-0010/BKN](#) [MP1010RX-1000](#) [MP44RX-1000](#) [PHJ-4P4C-1-V-4](#) [PHP-6P6C-5](#) [GAX-3-66](#) [GAX-8-62](#) [GDCX-PA-66-50](#) [GDCX-PN-64](#) [GDCX-PN-66](#) [GDCX-PN-66-50](#) [GDLX-A-66](#) [GDLX-N-66](#) [GDLX-S-66](#) [GDLX-S-88K](#) [GDLX-SMT-S-88](#) [GDTX-S-88-50](#) [GDX-PA-1010](#) [GLX-N-1010M-BLK](#) [GLX-S-88M-BLK](#) [GMX-N-1010](#) [GMX-S-1010](#) [GMX-S-66](#) [GMX-SMT4-N-88](#) [GPX-2-64](#) [GSGX-N-2-88](#) [GSGX-N-4-88](#) [GSX-NS2-88-3.05](#) [GSX-NS2-88-3.05-50](#) [GSX-NS-88-3.05-50](#) [PT-108A-8C-UL](#) [PT-J951-8C](#) [PTS-J531-8CS-50UL](#) [1-1775629-2](#) [A-2014-0-4](#) [GWLX-S-88-GR](#) [GWLX-S9-88-YG](#) [DC-1021-8-WH-6](#) [1300530003](#) [1324640-4](#) [RJ11FTVC2G](#) [RJ11FTVC2N](#) [RJFTVX2SA1G](#) [132764-001](#) [1413235](#) [MP88X-1000](#) [MPS88RX-5000](#) [E5288-S000K3-L](#) [E5908-15A242-L](#)