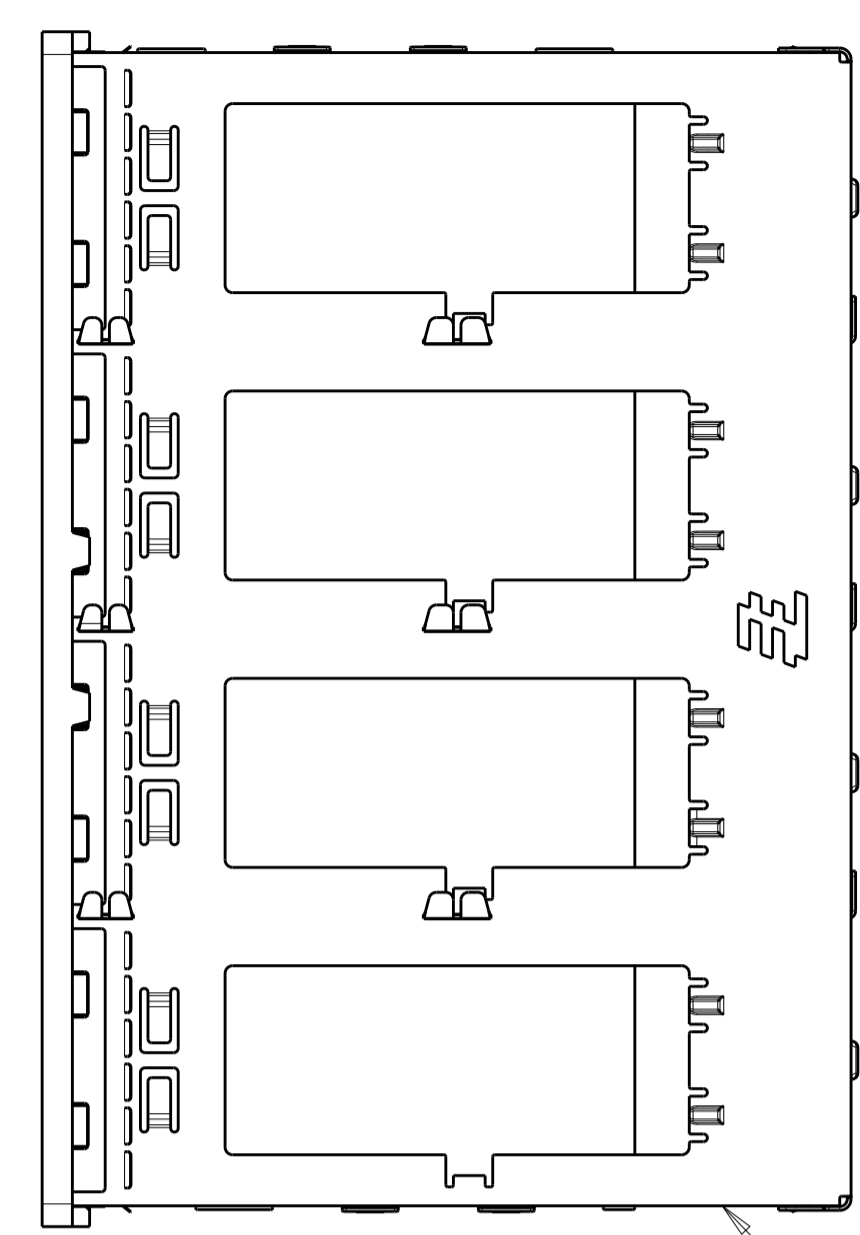
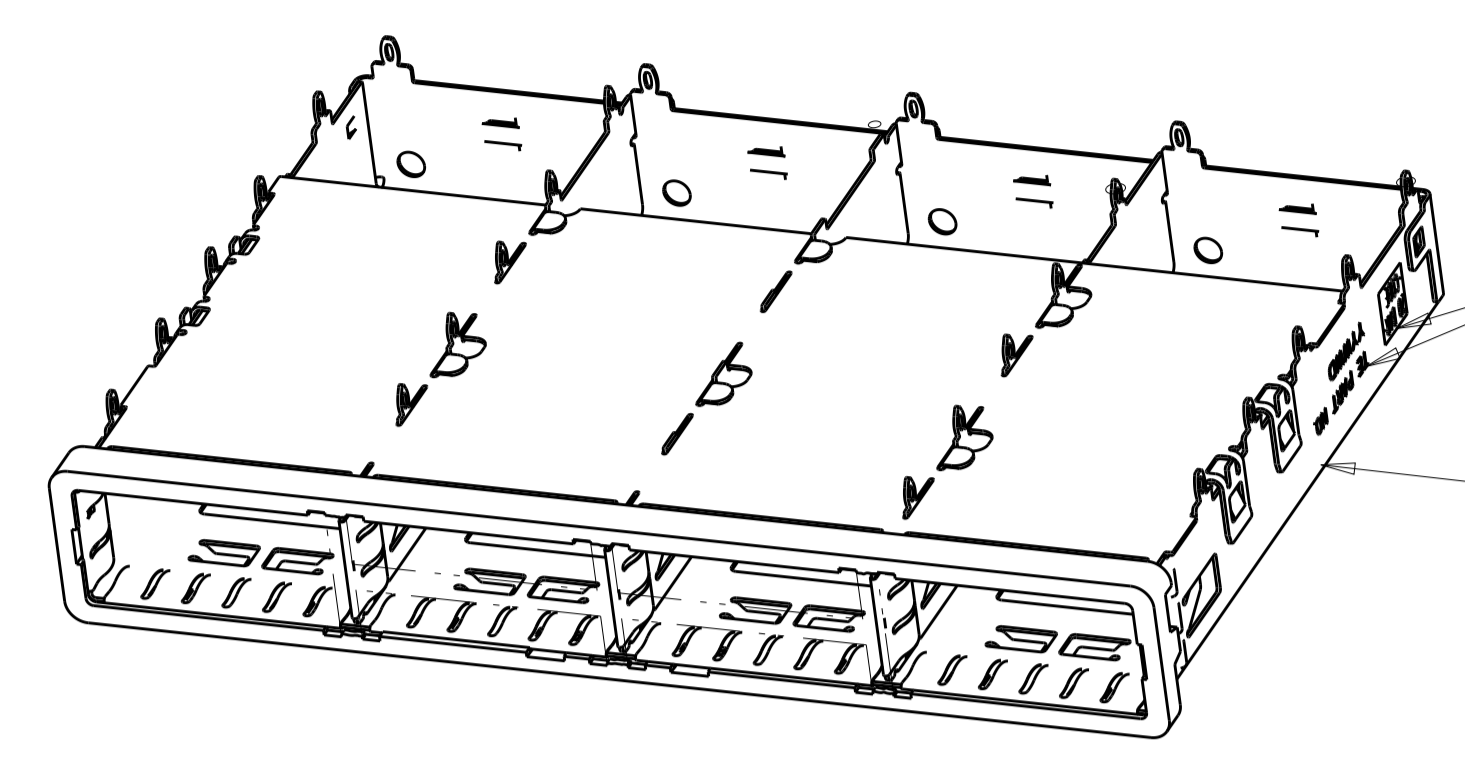


LOC	DIST	REVISIONS					
GP	00	P.	LTN	DESCRIPTION	DATE	DWN	APVD
		E		REVISED PER ECR-12-009968	31MAY2012	DZ	AC
		F		REVISED PER ECO-13-020244	31DEC2013	ZJ	JY
		G		REVISED PER ECO-15-000148	10APR2015	RG	MC

- 1 SURFACE TRACES PERMITTED WITHIN THIS AREA EXCEPT WHERE CAGE STANDOFFS, SHOWN IN DETAIL S, CONTACT PC BOARD.
- 2 PITCH BETWEEN PORTS OF ONE 1X4 CAGE.
- 3 SPACING BETWEEN CAGES ON THE SAME PC BOARD. TO BE SPECIFIED BY CUSTOMER, MUST COMPLY WITH MINIMUM DIMENSIONS SHOWN.
- 4 REFERENCE APPLICATION SPEC 114-13218 FOR RECOMMENDED DRILL HOLE DIAMETER AND PLATING THICKNESS.
- 5 UNPLATED THRU HOLE.
- 6 DATUM AND BASIC DIMENSION ESTABLISHED BY CUSTOMER.
- 7 DATUM -A- IS TOP SURFACE OF THE HOST BOARD.
- 8 DIMENSION C IS THE NOMINAL THICKNESS OF CUSTOMER SUPPLIED PC BOARD. MINIMUM PC BOARD THICKNESS:
 SINGLE SIDED: 1.45mm
 DOUBLE SIDED: 2.2mm PER QSFP
- 9. MATES WITH QSFP MSA COMPATIBLE TRANSCEIVER.
- 10 BASELINE FOR THE DIMENSION IS CENTER OF COMPLIANT PIN HOLE.
- 11 2D BARCODE AND DATE CODE (YYWW) MARKED APPROXIMATELY AS SHOWN.
- 12 REFERENCE APP SPEC 114-13218 FOR GASKET THICKNESS CALCULATION.
- 13 MATERIAL:
 CAGE ASSEMBLY: NICKEL SILVER, 0.25 THICK
 EMI SPRINGS: COPPER ALLOY
 FRONT FLANGE: ZINC ALLOY.
- 14 FINISH:
 EMI SPRINGS: 2um MINIMUM TIN
 FRONT FLANGE: 3um MINIMUM TIN OVER 1.27um MINIMUM NICKEL OVER 5.08um MINIMUM COPPER
- 15 HOLES ARE OPTIONAL WHEN PINS ON CENTRAL DIVIDER ARE REMOVED.



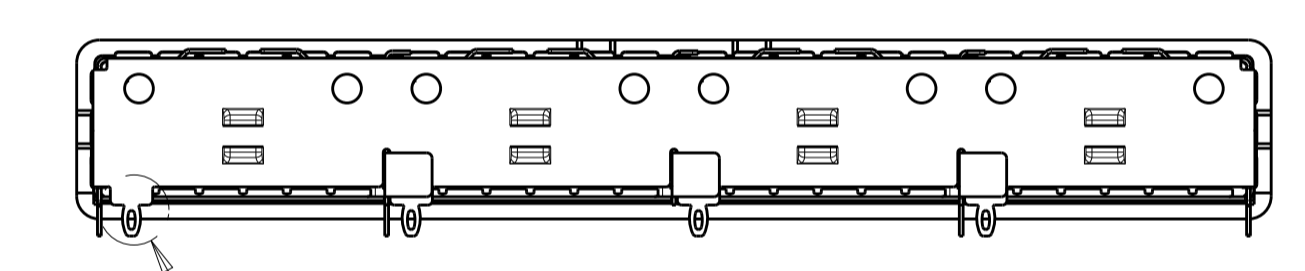
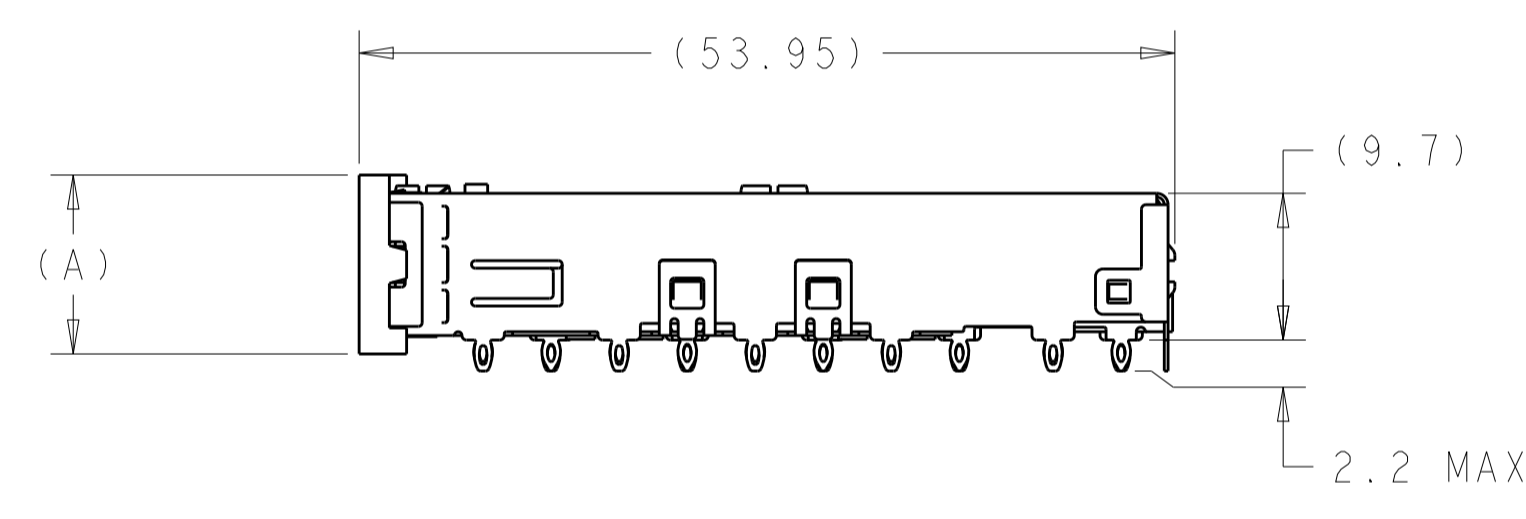
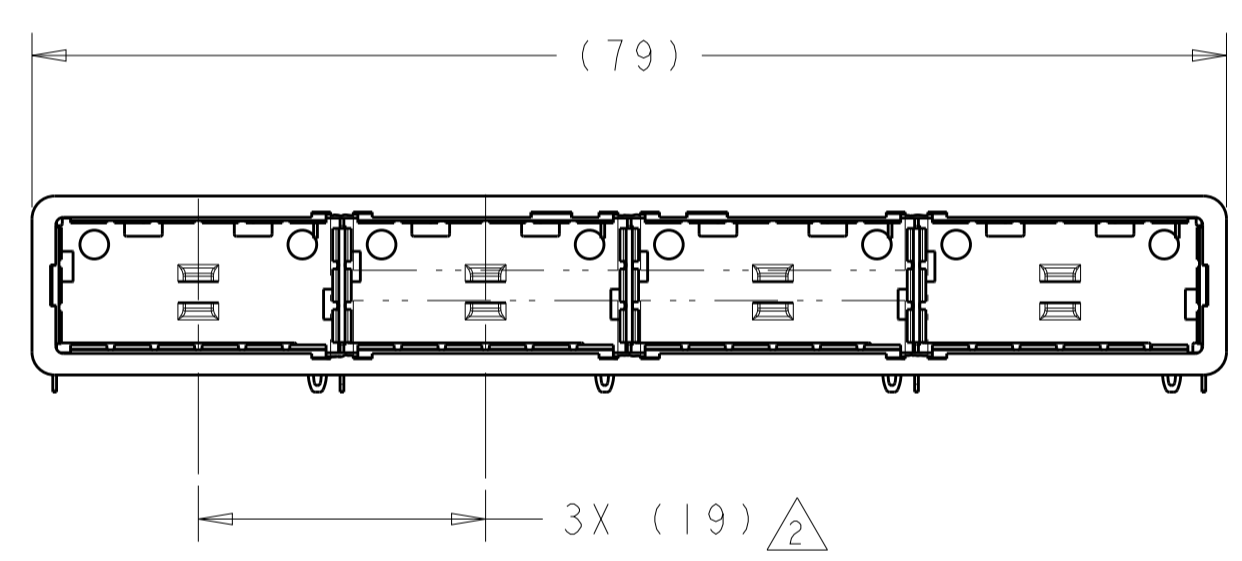
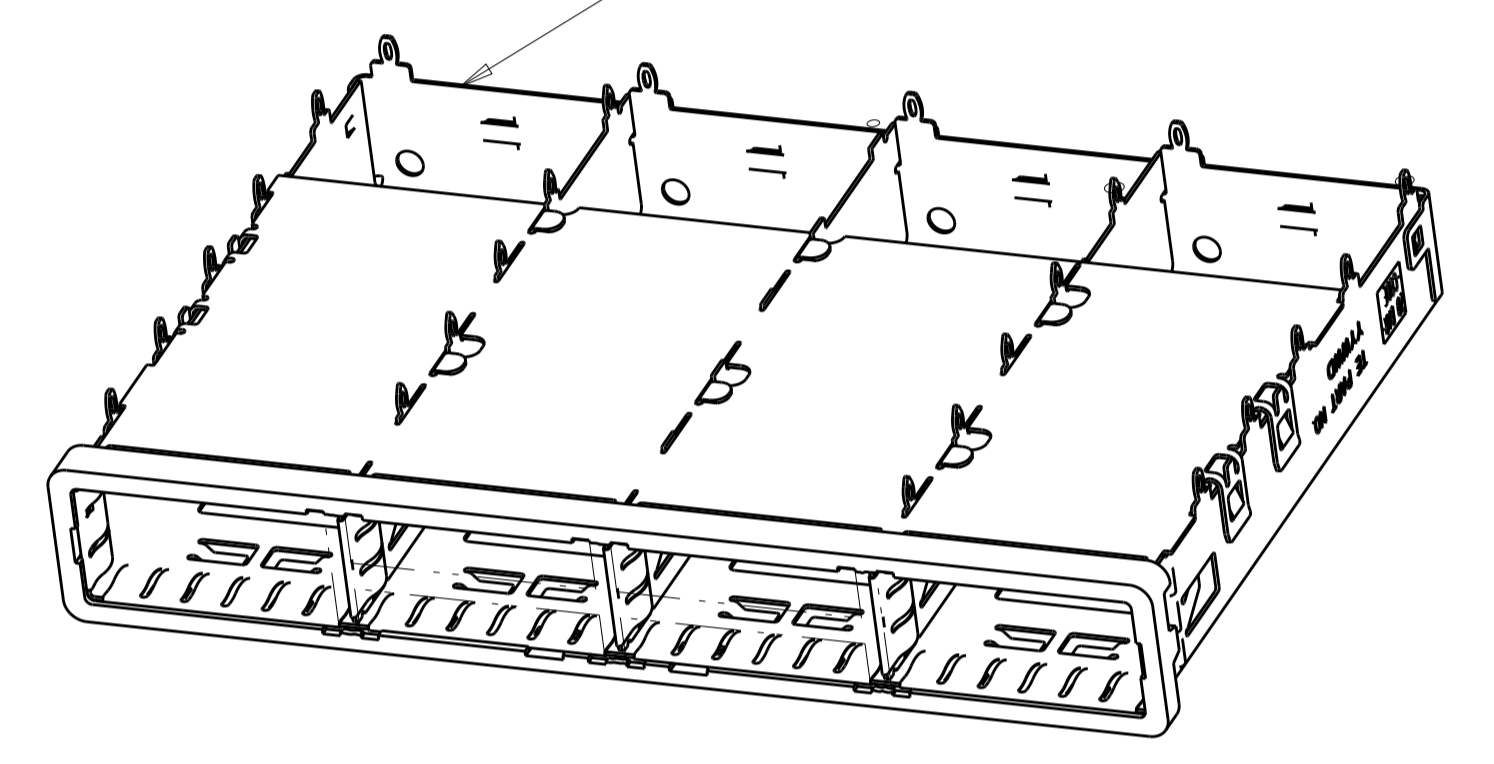
EMI SPRINGS CAGE ASSEMBLY



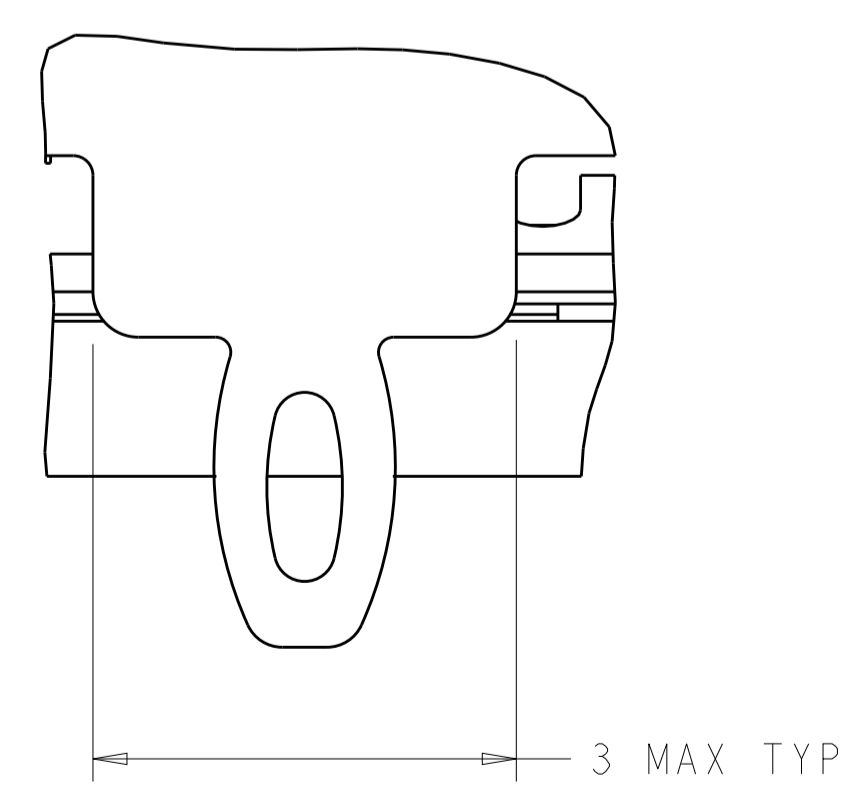
2D BARCODE AND DATE CODE

2007667-1

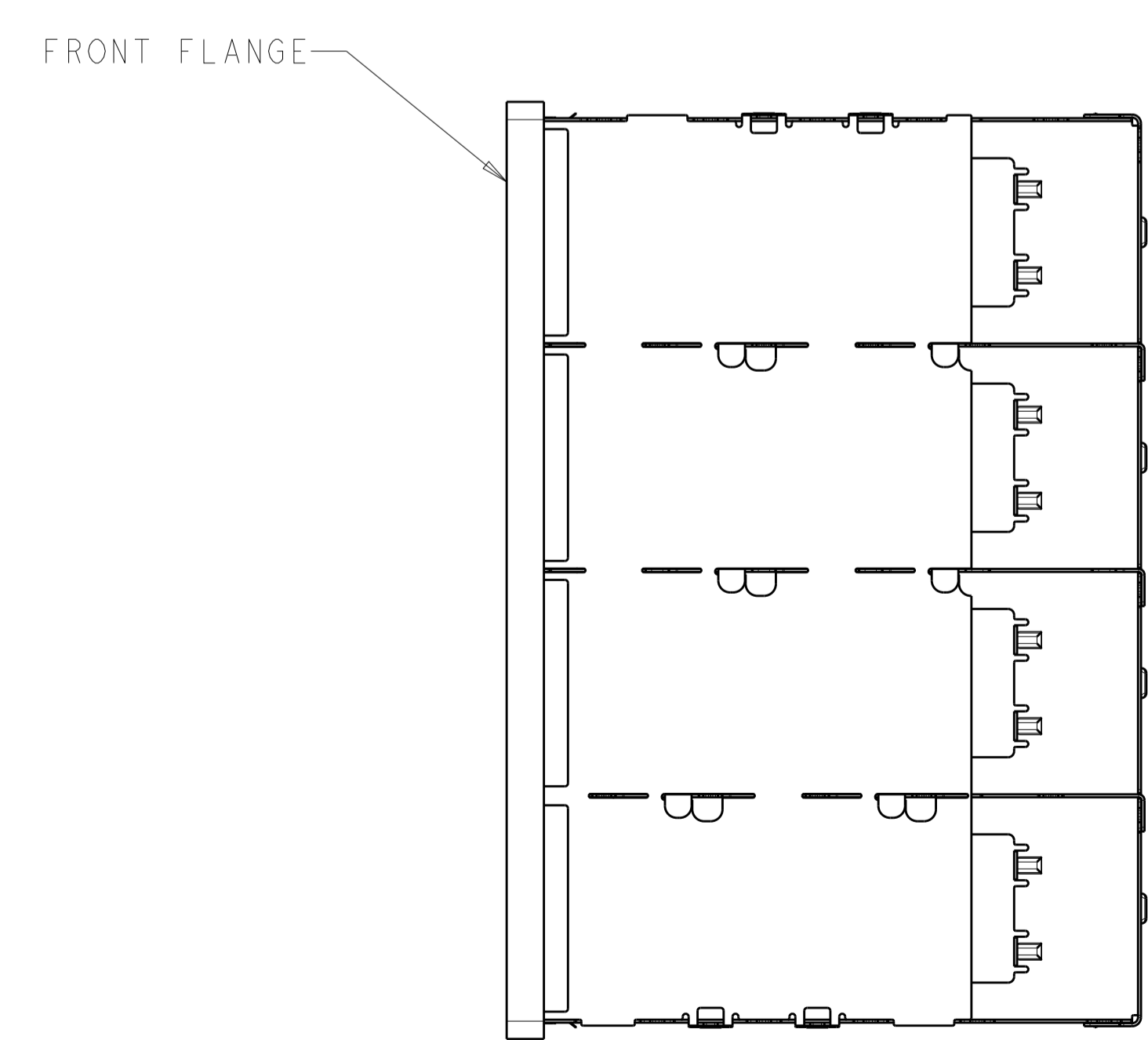
2007667-5



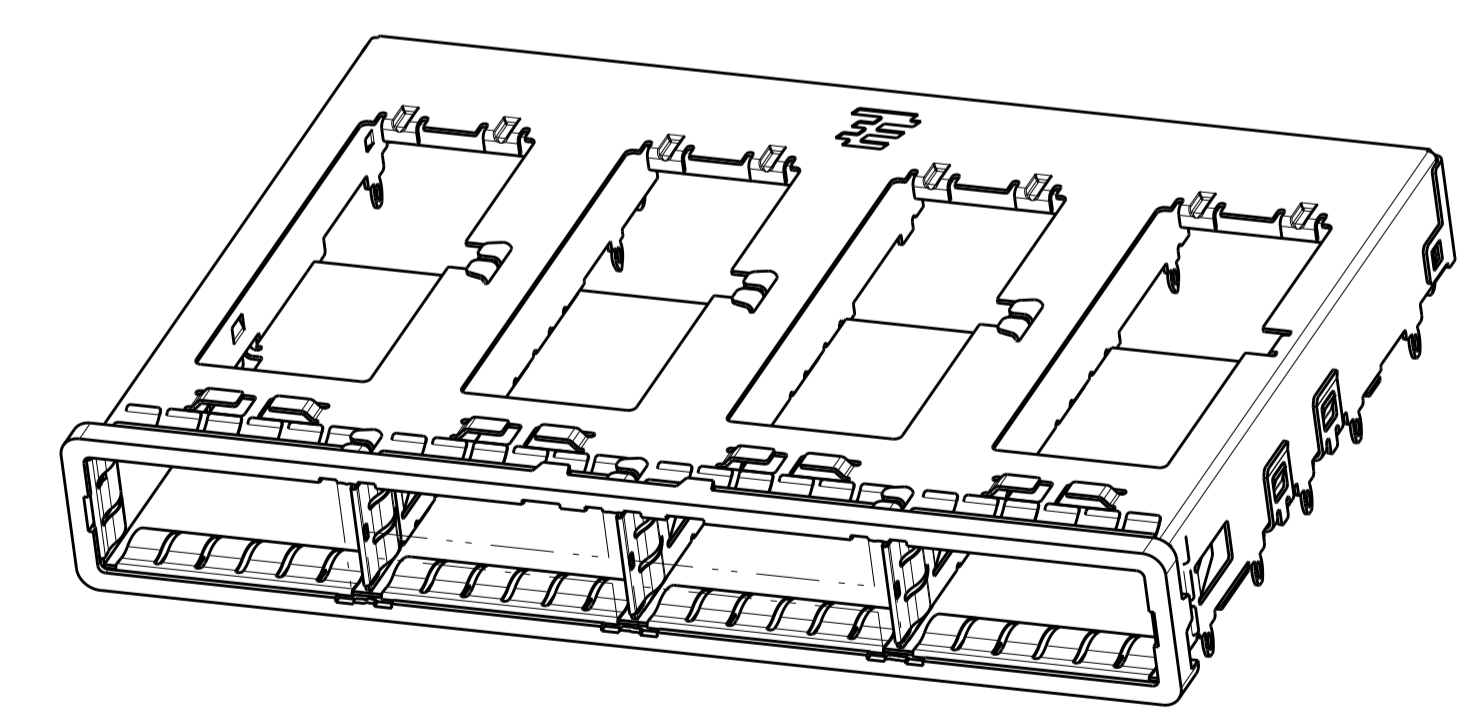
SEE DETAIL S



DETAIL S SCALE 20:1



FRONT FLANGE



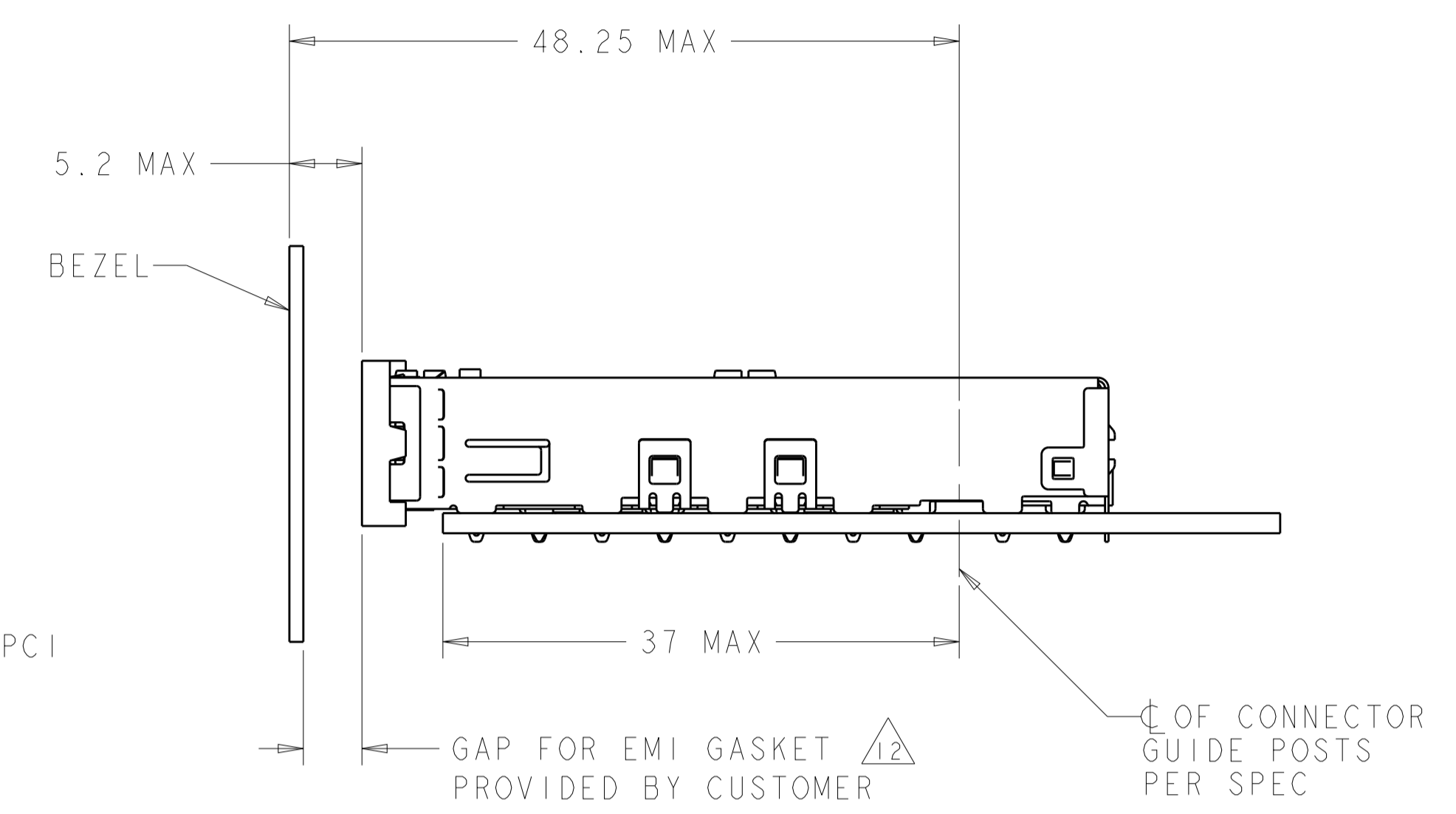
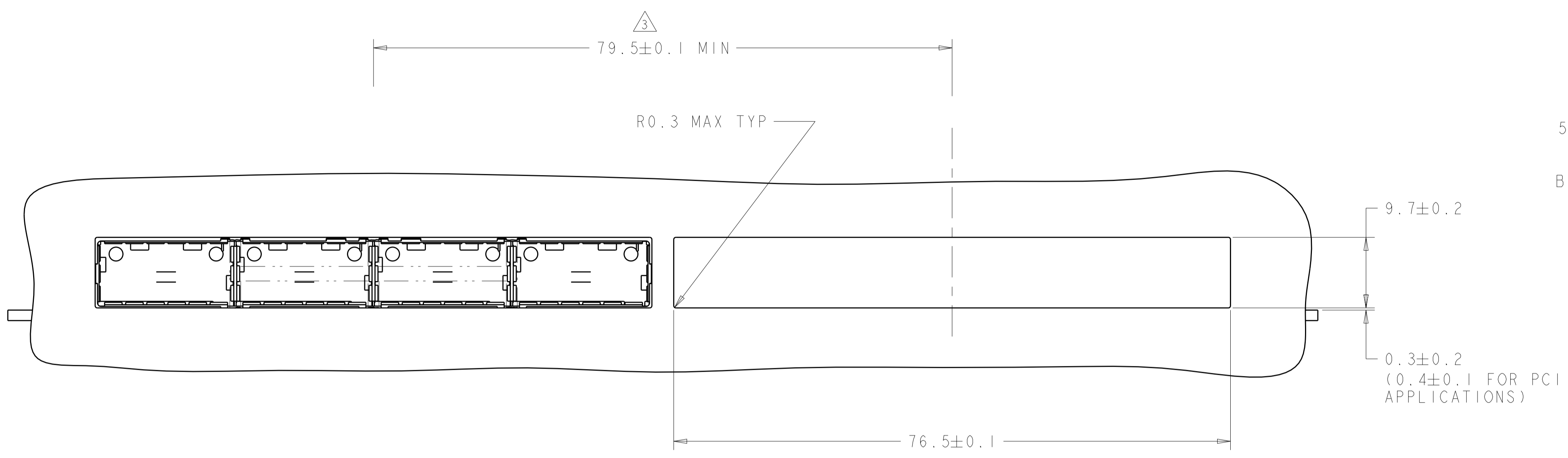
	13.03	2007667-5
	11.83	2007667-3
	13.03	2007667-1
DIM A		PART NUMBER

OBSOLETE

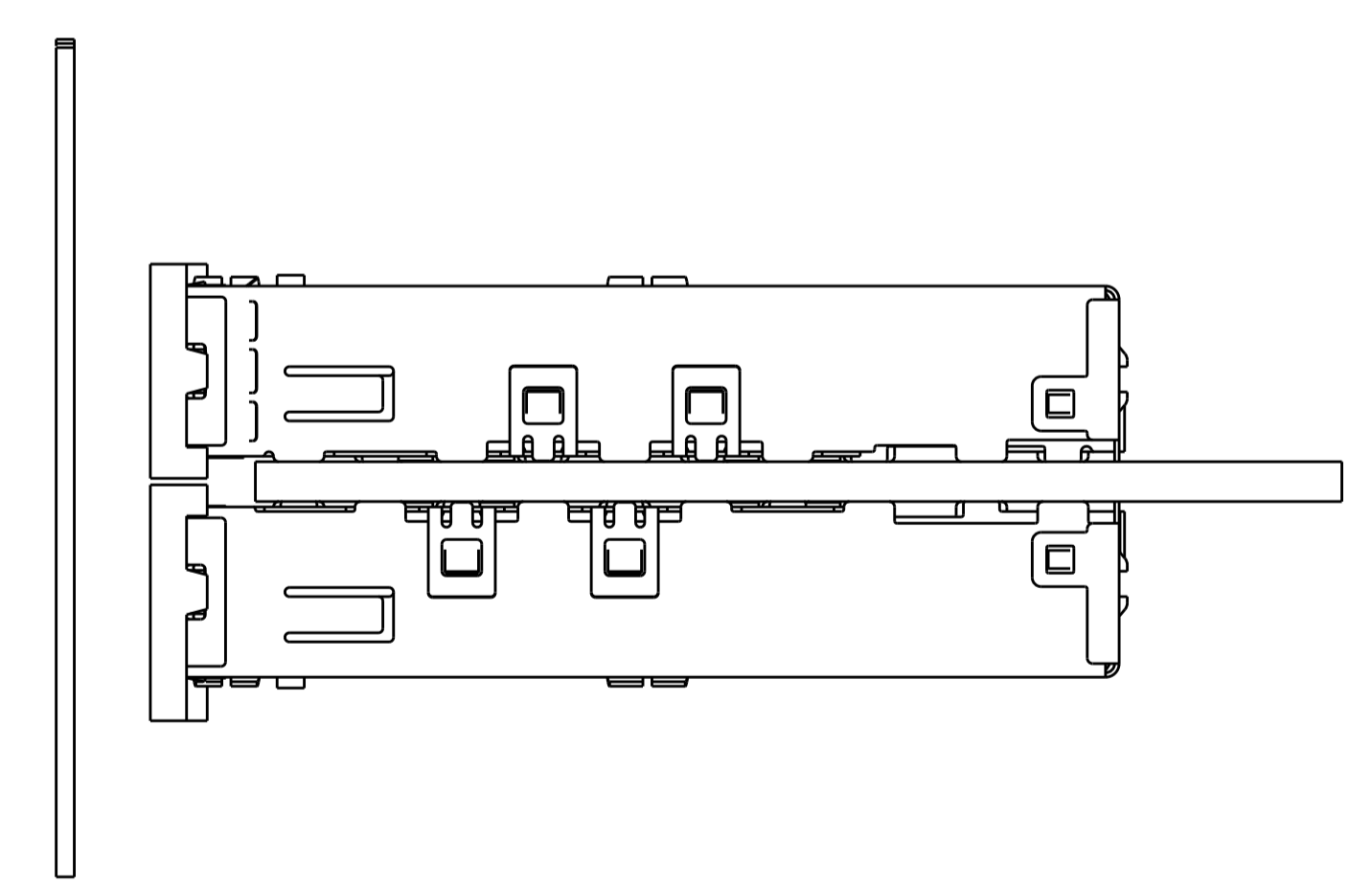
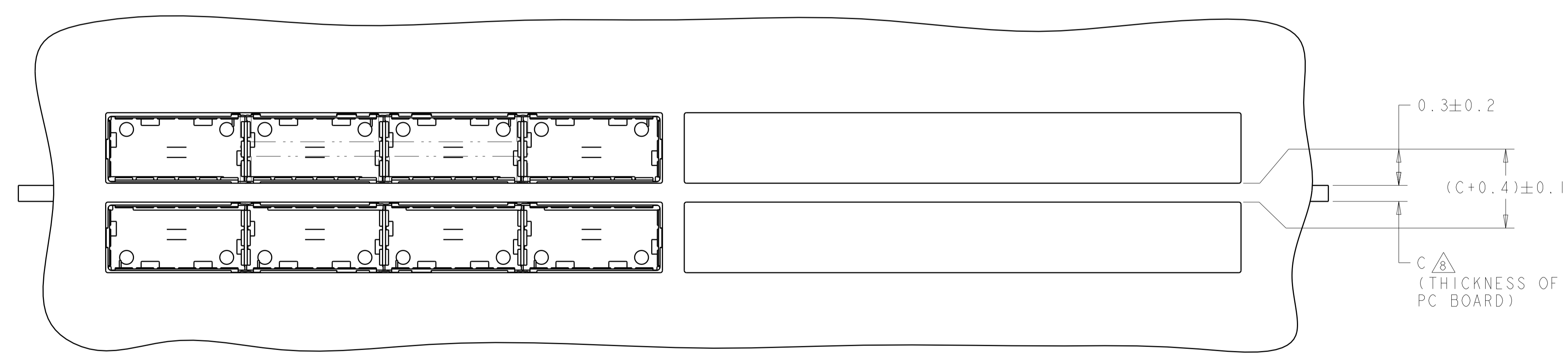
THIS DRAWING IS A CONTROLLED DOCUMENT.		DWN C. VALENTINE 05JUN2008	TE Connectivity	
DIMENSIONS:		CHK E. BRIGHT 05JUN2008	NAME 1X4 CAGE ASSEMBLY, BEHIND BEZEL, QSFP	
mm	0 PLC ± 1 PLC ±0.1 2 PLC ±0.1 3 PLC ±0.013 4 PLC ±0.0001	APVD E. BRIGHT 05JUN2008	PRODUCT SPEC 108-2286	
TOLERANCES UNLESS OTHERWISE SPECIFIED:		APPLICATION SPEC 114-13218		
MATERIAL		SIZE CAGE CODE DRAWING NO A100779C=2007667		
FINISH		RESTRICTED TO Customer Drawing		
SCALE 2:1		SHEET 1 OF 4 REV G		

LOC	DIST	REV	DATE	BY	APPD
GP	00				

REVISIONS					
REV	DATE	BY	APPD	DESCRIPTION	DATE
-	-	-	-	SEE SHEET 1	-



ONE SIDED CONFIGURATION
 SCALE 5:2



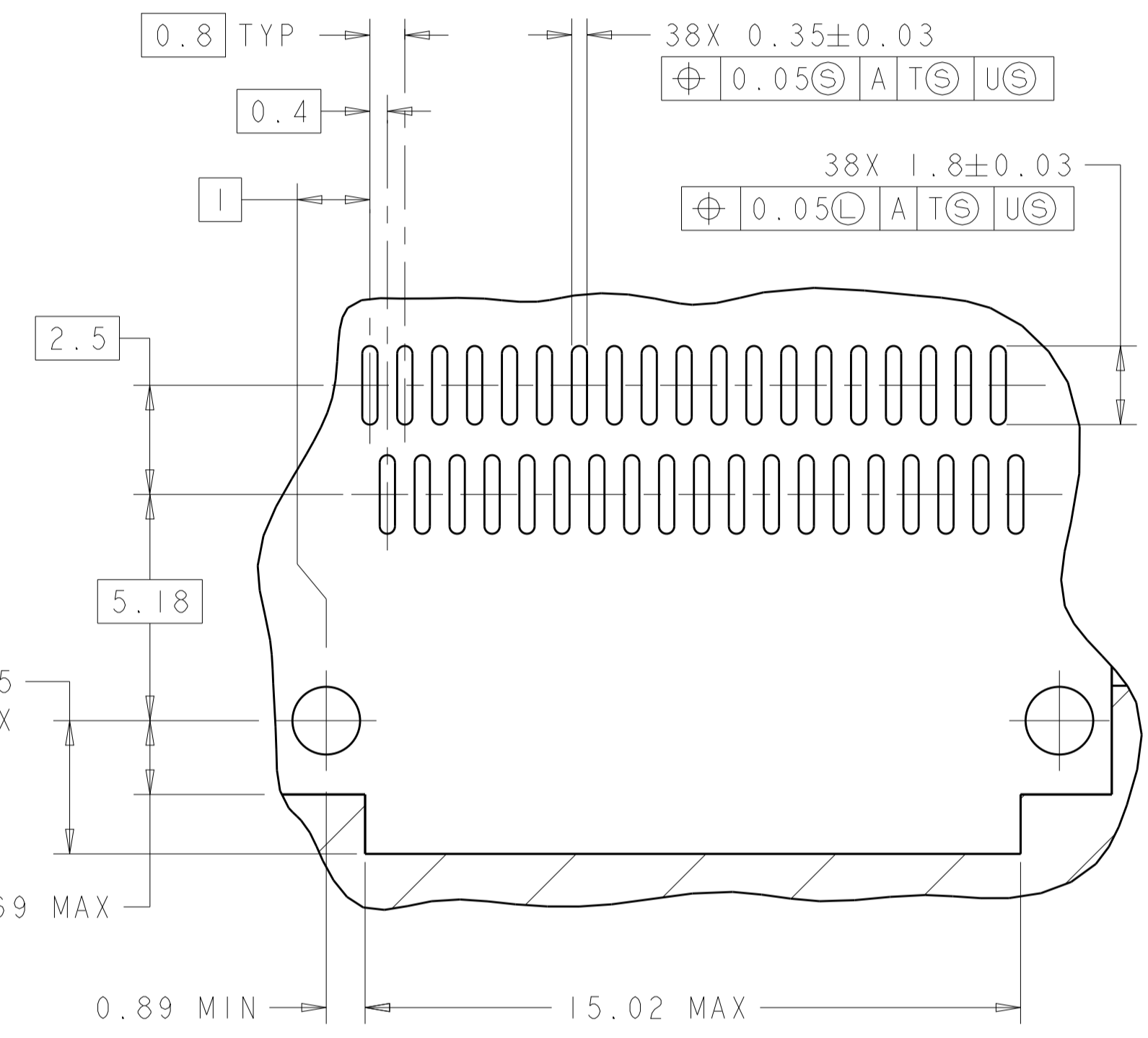
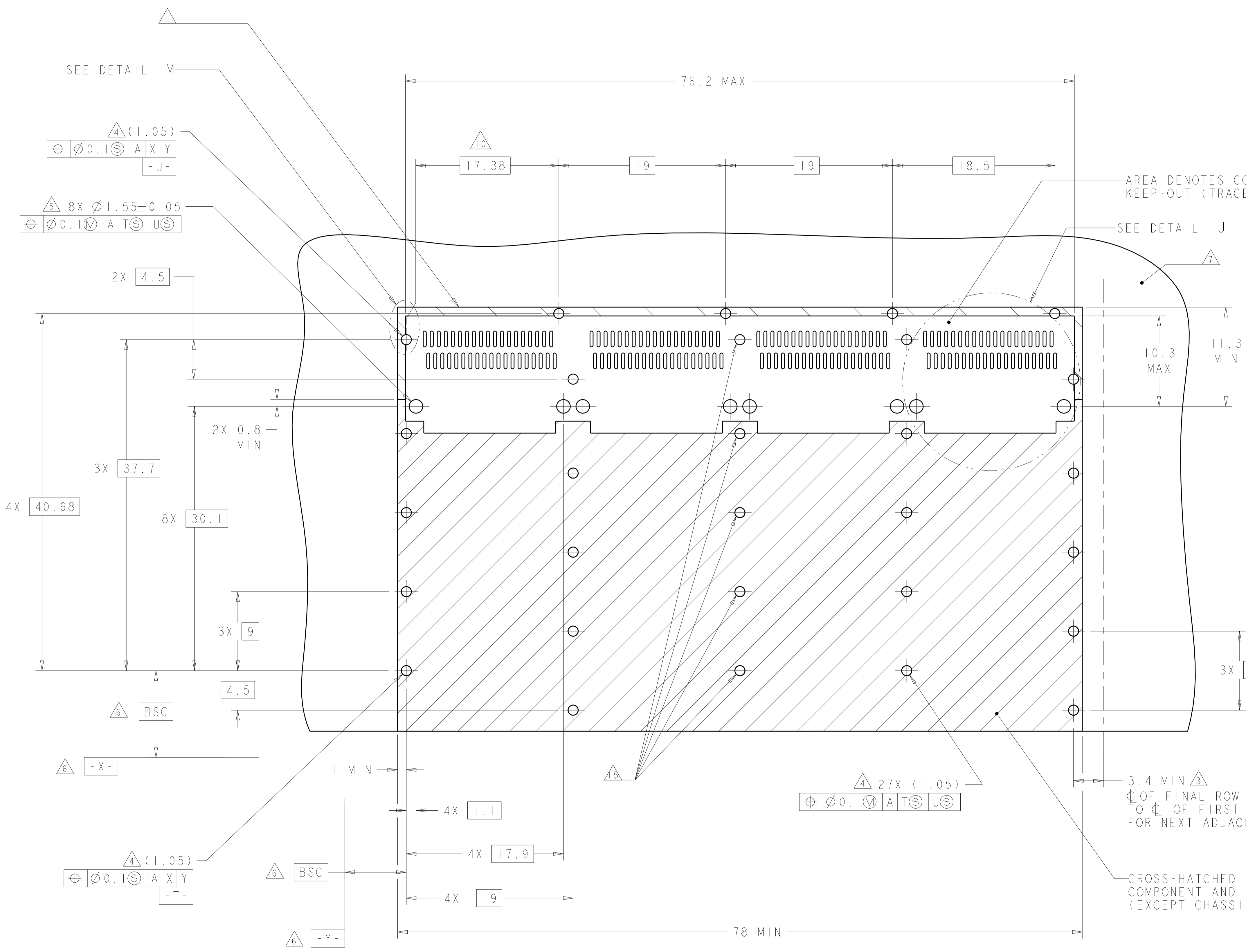
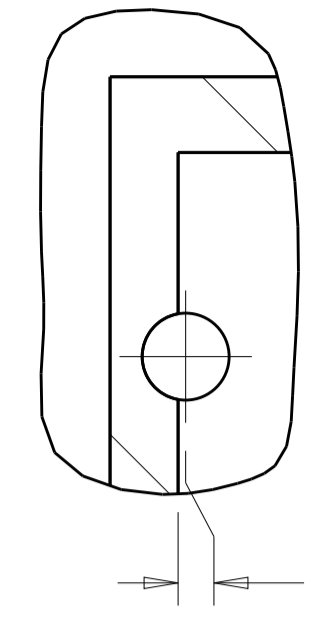
BELLY TO BELLY CONFIGURATION SIMILAR
 TO ONE SIDED EXCEPT WHERE NOTED
 SCALE 5:2

THIS PRODUCT HAS NOT COMPLETED VALIDATION/QUALIFICATION TESTING

THIS DRAWING IS A CONTROLLED DOCUMENT.		OWN: C. VALENTINE 05JUN2008	TE Connectivity
DIMENSIONS: mm		CHK: E. BRIGHT 05JUN2008	
TOLERANCES UNLESS OTHERWISE SPECIFIED:		APVD: F. BRIGHT 05JUN2008	NAME: 1X4 CAGE ASSEMBLY, BEHIND BEZEL, QSFP
0 PLC ±	1 PLC ±0.1	PRODUCT SPEC	SIZE: CAGE CODE DRAWING NO
2 PLC ±0.1	3 PLC ±0.013	108-2286	RESTRICTED TO
4 PLC ±0.0001	ANGLES ±0.0001	APPLICATION SPEC	A100779C=2007667
MATERIAL: -	FINISH: -	114-13218	SCALE: 2:1 SHEET 2 OF 4 REV G
Customer Drawing		WEIGHT: -	

LOC	DIST	REV	DATE	BY	APPV
GP	00				

DETAIL M
 SCALE 10:1



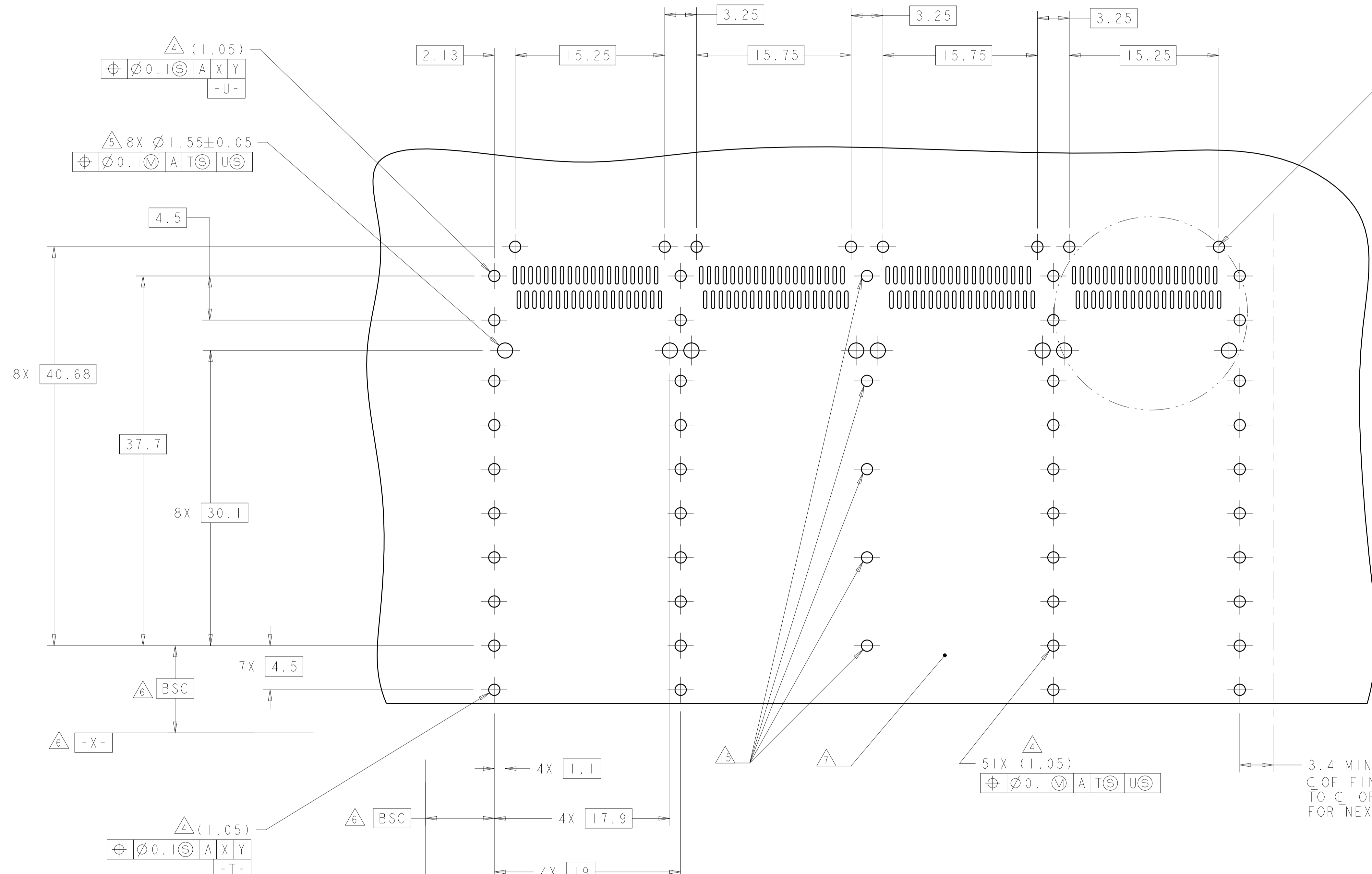
DETAIL J
 4 PLACES
 SCALE 8:1

RECOMMENDED PC BOARD LAYOUT
 SINGLE SIDE MOUNT CONFIGURATION
 SCALE 4:1

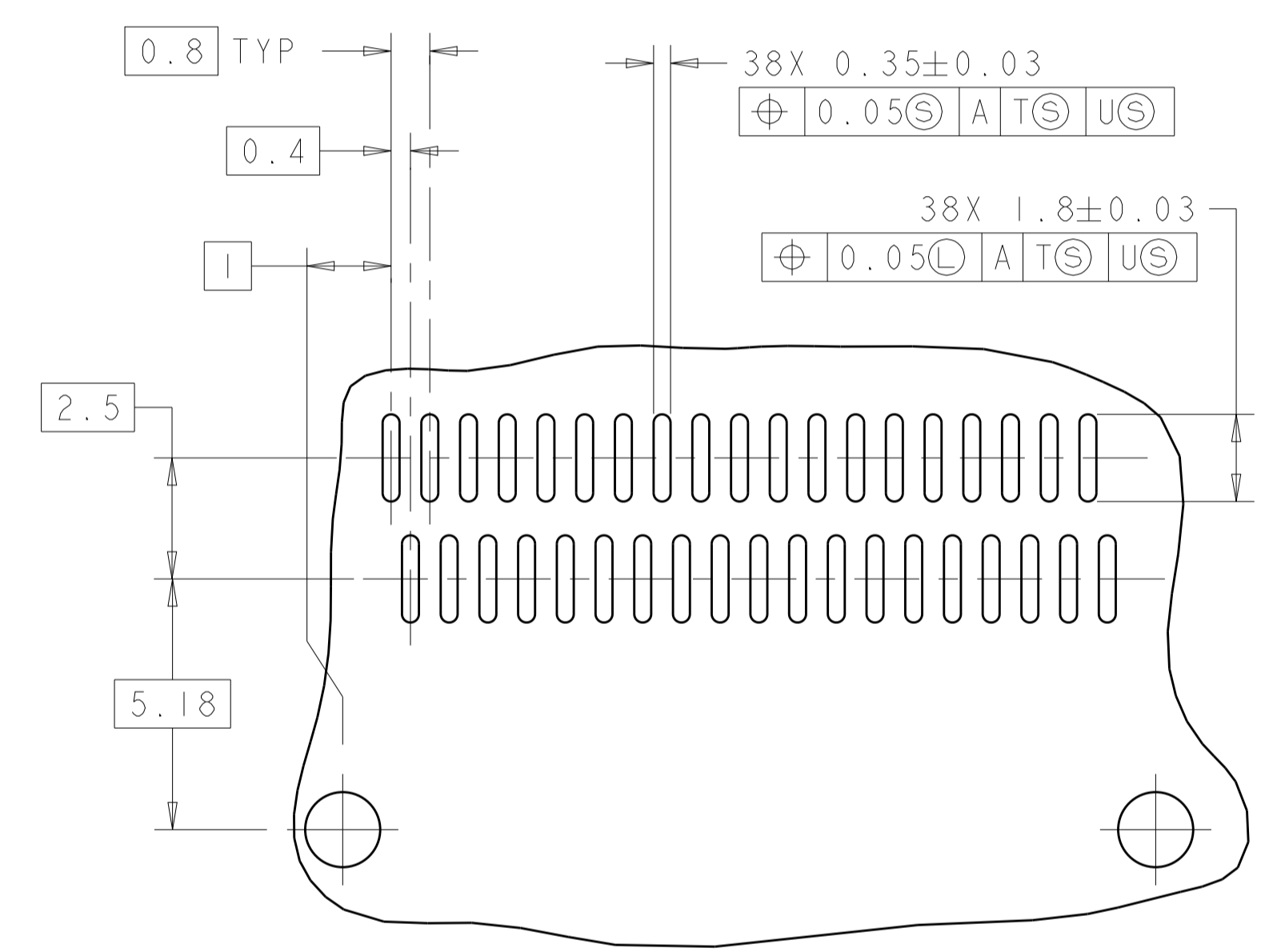
THIS PRODUCT HAS NOT COMPLETED VALIDATION/QUALIFICATION TESTING

THIS DRAWING IS A CONTROLLED DOCUMENT.		DWN C. VALENTINE 05JUN2008	TE Connectivity NAME 1X4 CAGE ASSEMBLY, BEHIND BEZEL, QSPF
DIMENSIONS: mm		CHK E. BRIGHT 05JUN2008	
TOLERANCES UNLESS OTHERWISE SPECIFIED:		APVD E. BRIGHT 05JUN2008	PRODUCT SPEC 108-2286
0 PLC ± 1 PLC ±0.1 2 PLC ±0.1 3 PLC ±0.013 4 PLC ±0.0001 ANGLES ±0.001		APPLICATION SPEC 114-13218	RESTRICTED TO
MATERIAL	FINISH	WEIGHT	Customer Drawing
SCALE 2:1		SHEET 3 OF 4	REV G

LOC	DIST	REVISIONS			
P	LTN	DESCRIPTION	DATE	DMN	APVD
-	-	SEE SHEET 1	-	-	-



SEE DETAIL K



DETAIL K
SCALE 8:1

RECOMMENDED PC BOARD LAYOUT
BELLY TO BELLY CONFIGURATION
SEE SHEET 3 FOR COMPONENT AND TRACE KEEP-OUTS
SCALE 4:1

3.4 MIN Δ
C OF FINAL ROW OF HOLES
TO C OF FIRST ROW OF HOLES
FOR NEXT ADJACENT CAGE.

THIS PRODUCT HAS NOT COMPLETED VALIDATION/QUALIFICATION TESTING

THIS DRAWING IS A CONTROLLED DOCUMENT.		DMN C. VALENTINE 05JUN2008	TE Connectivity
DIMENSIONS: mm		CHK E. BRIGHT 05JUN2008	
TOLERANCES UNLESS OTHERWISE SPECIFIED:		APVD E. BRIGHT 05JUN2008	NAME 1X4 CAGE ASSEMBLY, BEHIND BEZEL, QSFP
0 PLC ±0.1	1 PLC ±0.1	PRODUCT SPEC	108-2286
2 PLC ±0.1	3 PLC ±0.013	APPLICATION SPEC	114-13218
4 PLC ±0.0001	ANGLES ±0.0001	FINISH	114-13218
MATERIAL		WEIGHT	A100779C=2007667
		Customer Drawing	SCALE 2:1 SHEET 4 OF 4 REV G

X-ON Electronics

Largest Supplier of Electrical and Electronic Components

Click to view similar products for [I/O Connectors](#) category:

Click to view products by [TE Connectivity](#) manufacturer:

Other Similar products are found below :

[571763P](#) [72.250.1628.2](#) [72.250.2428.2](#) [74720-0505](#) [76.350.0729.0](#) [76871-1403](#) [FCN-244F080-G/1](#) [FCN-260A9920](#) [MP-5T180MUNNA-005](#)
[PCR-E36PM](#) [PCS-XE26MA+](#) [G38A71314B](#) [1571250010](#) [157-22500-3](#) [MS3471L14-19P L/C](#) [91-569786-35H](#) [172501-4002](#) [172501-6002](#)
[FCN-260C008-A/L0](#) [FCN-260C024-AL0](#) [FCN-261Z008](#) [2000314-1](#) [200331-1](#) [PCR-E36FC+](#) [PCS-E28FS+](#) [PCS-XE26SLFD+](#) [PCS-](#)
[XE26SLFDT+](#) [G730VID08BDC24](#) [U90B2054081210](#) [UE86K842720321](#) [38113800006](#) [DP3AR020WQ1R200](#) [Z4.102.0680.0](#) [500-1040](#)
[500-1052](#) [500-1054](#) [ZP-4008-66L](#) [0709821002](#) [10-565995-597N](#) [DX40-20P\(55\)](#) [5554841-1](#) [U90B3054061110](#) [U65-E04-4020](#)
[ZPF00000000097891](#) [557-262M2-06C](#) [747360449](#) [10099439-003C-TRLF](#) [10137239-0021LF](#) [E9320-001-01](#) [10137239-0011LF](#)