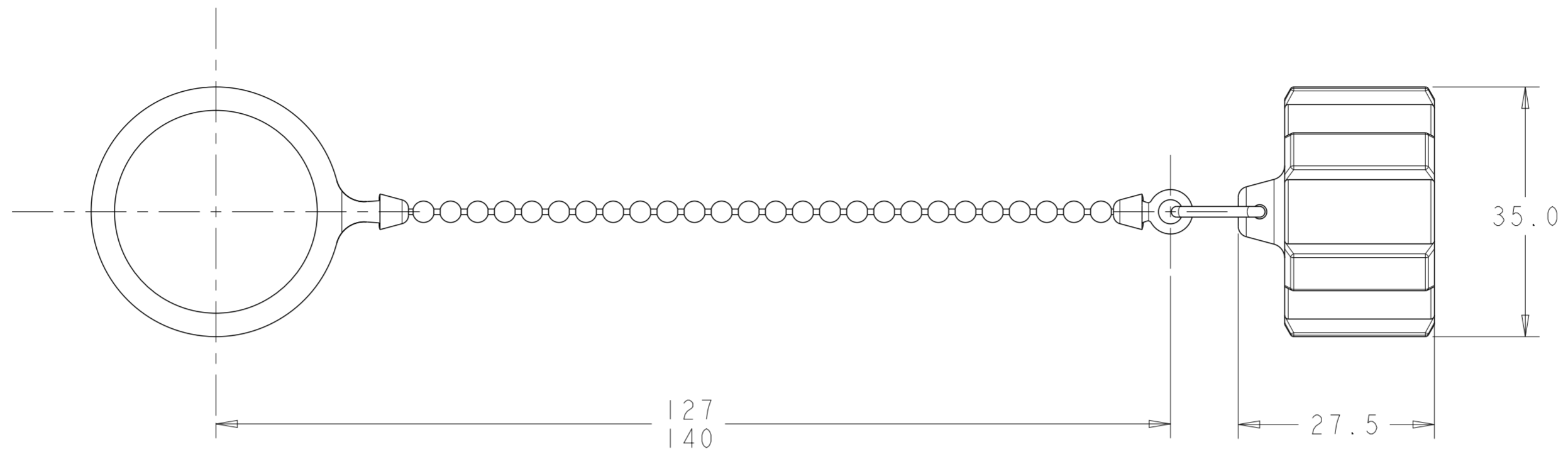


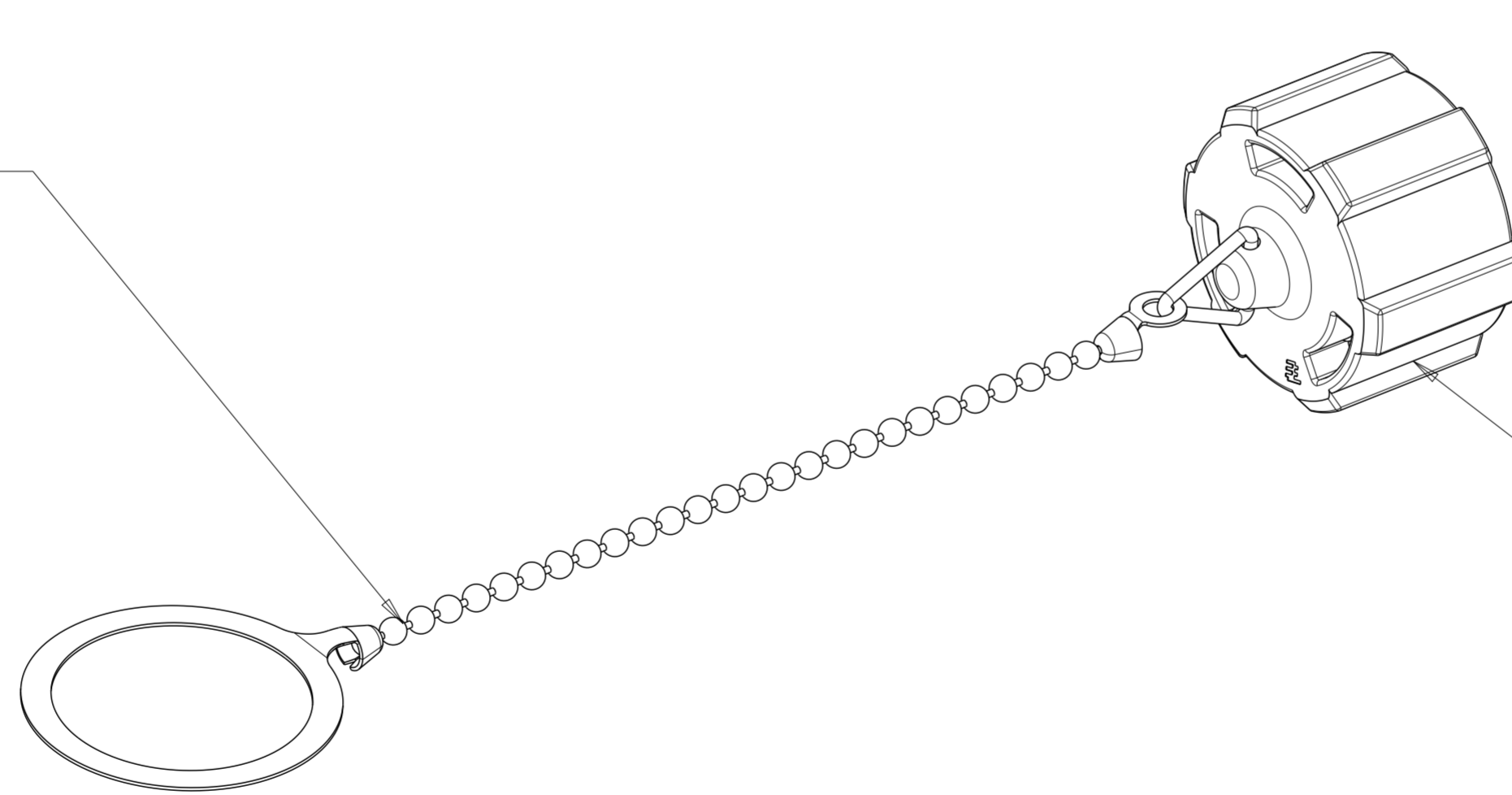
P	LTR	DESCRIPTION	DATE	DWN	APVD
A2		REVISED PER ECR 10-016780	16AUG10	JR	SM
A3		PCN E-19-018630	05JUN2020	SS	JK



CHAIN ASSEMBLY
STAINLESS STEEL
Ø3.0 BALL CHAIN

INTERFACIAL SEAL
ELASTOMER (ORANGE)

COVER, COUPLING RING
ZINC, TRIVALENT CHROMATE



SUPERSEDED	PROTECTIVE COVER W/O CHAIN	2008618-2
	PROTECTIVE COVER KIT	2008618-1
	DESCRIPTION	PART NUMBER

THIS DRAWING IS A CONTROLLED DOCUMENT.		DWN	ARJUN	24OCT2008
DIMENSIONS:		CHK	-	-
mm	TOLERANCES UNLESS OTHERWISE SPECIFIED:	APVD	-	-
	0 PLC ±-	PRODUCT SPEC	-	-
	1 PLC ±0.5	APPLICATION SPEC	-	-
	2 PLC ±0.13	WEIGHT	-	-
	3 PLC ±-	SCALE	3:2	SHEET 1 OF 1
	4 PLC ±-	RESTRICTED TO	A2	00779
MATERIAL	FINISH	DRAWING NO		REV
material_2	finish_spec_2	C-2008618		A3
CUSTOMER DRAWING				



NAME
PROTECTIVE COVER KIT
INDUSTRIAL ETHERNET CONNECTOR

X-ON Electronics

Largest Supplier of Electrical and Electronic Components

Click to view similar products for [Modular Connectors / Ethernet Connectors](#) category:

Click to view products by [TE Connectivity](#) manufacturer:

Other Similar products are found below :

[8949-H88/06BLKA/SN](#) [74441-0010/BKN](#) [MP1010RX-1000](#) [MP44RX-1000](#) [PHJ-4P4C-1-V-4](#) [PHP-6P6C-5](#) [GAX-3-66](#) [GAX-8-62](#) [GDCX-PA-66-50](#) [GDCX-PN-64](#) [GDCX-PN-66](#) [GDCX-PN-66-50](#) [GDLX-A-66](#) [GDLX-N-66](#) [GDLX-S-66](#) [GDLX-S-88K](#) [GDTX-S-88-50](#) [GDX-PA-1010](#) [GLX-N-1010M-BLK](#) [GLX-S-88M-BLK](#) [GMX-N-1010](#) [GMX-S-1010](#) [GMX-S-66](#) [GMX-SMT4-N-88](#) [GPX-2-64](#) [GSGX-N-2-88](#) [GSGX-N-4-88](#) [GSX-NS2-88-3.05](#) [GSX-NS2-88-3.05-50](#) [GSX-NS-88-3.05-50](#) [PT-108A-8C-UL](#) [PT-J951-8C](#) [PTS-J531-8CS-50UL](#) [1-1775629-2](#) [A-2014-0-4](#) [GWLX-S-88-GR](#) [GWLX-S9-88-YG](#) [DC-1021-8-WH-6](#) [1300530003](#) [1324640-4](#) [RJ11FTVC2G](#) [RJ11FTVC2N](#) [RJFTVX2SA1G](#) [132764-001](#) [1413235](#) [MP88X-1000](#) [MPS88RX-5000](#) [E5288-S000K3-L](#) [E5908-15A242-L](#) [155302-001](#)