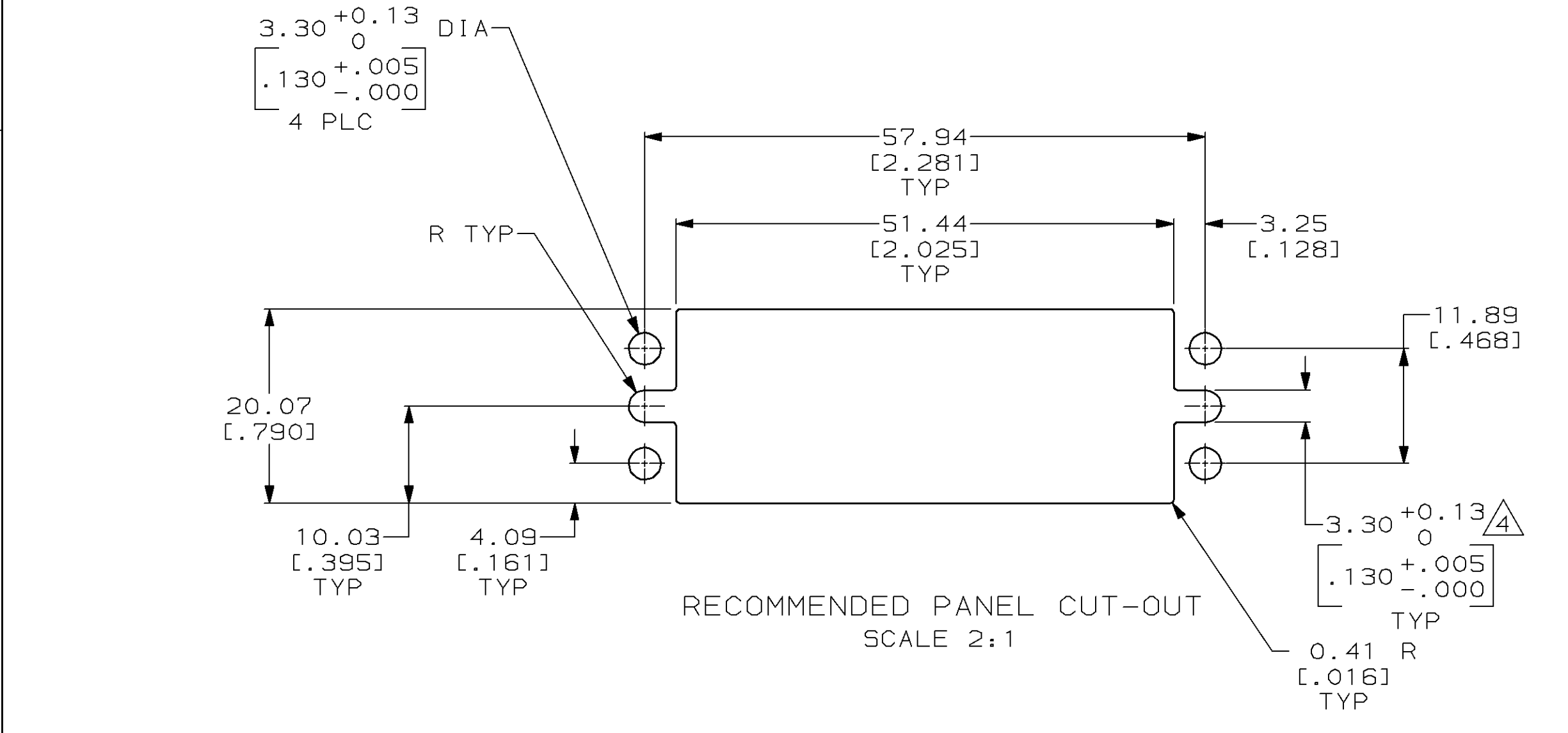
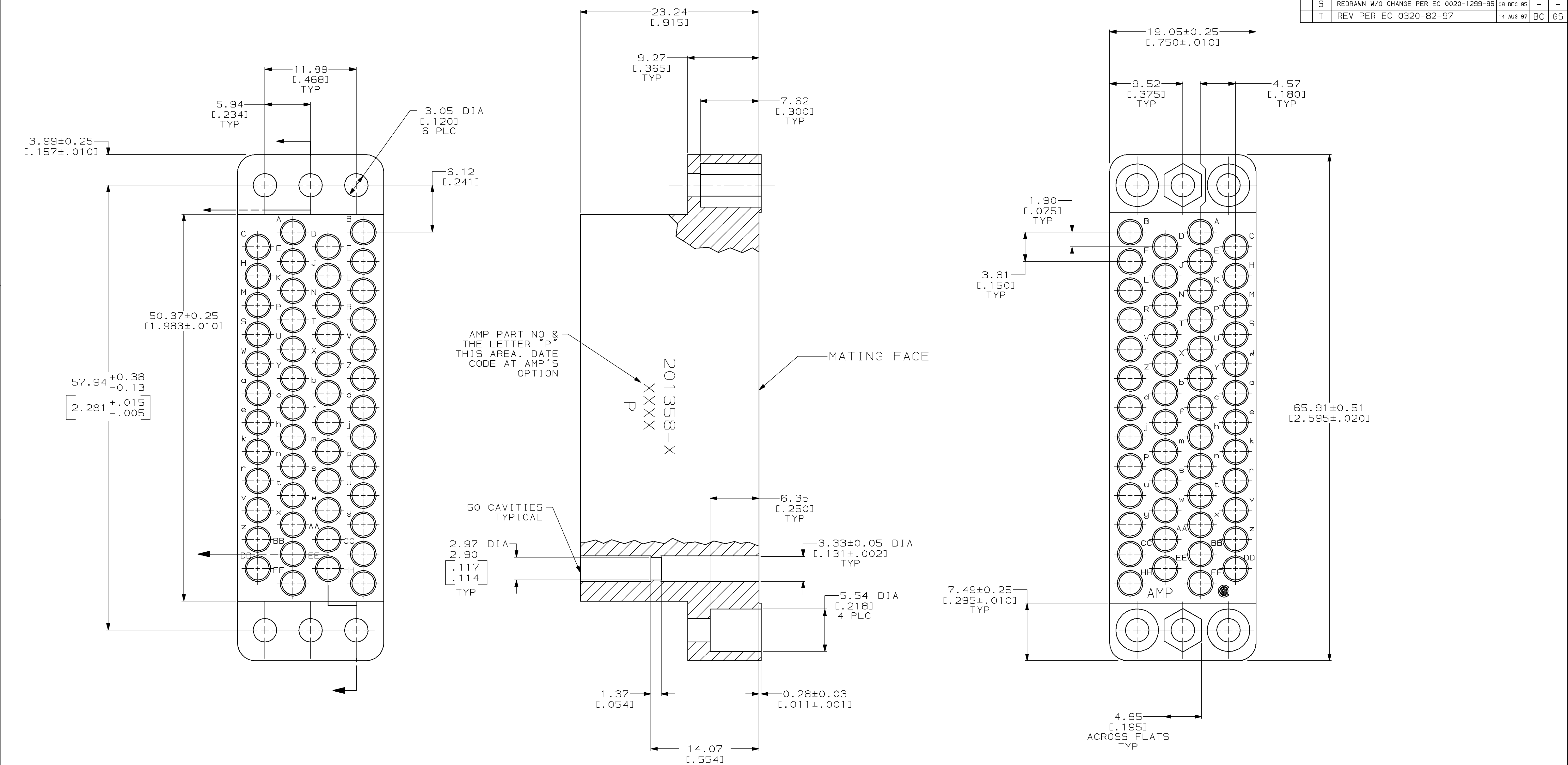


| LOC | | DIST | | REVISIONS | | | |
|-----|-----|--|-----------|-----------|------|--|--|
| P | LTR | DESCRIPTION | DATE | OWN | APVD | | |
| S | | REDRAWN W/O CHANGE PER EC 0020-1299-95 | 08 DEC 95 | - | - | | |
| T | | REV PER EC 0320-82-97 | 14 AUG 97 | BC | GS | | |



- 1 PHENOLIC PER MIL-M-14, TYPE CFG, BLACK.
- 2 DIALLYL PHTHALATE PER MIL-M-14, TYPE SDG-F, BLUE.
- 3. MATES WITH BLOCK 200277 AND ACCOMODATES TYPE II OR TYPE III #16 PIN OR SOCKET CONTACTS.
- 4 5.54^{+0.13}₀ [.218^{+0.005}_{-.000}] WHEN USING JACKSCREWS.

| | |
|-------------|----------|
| MATERIAL | 201358-3 |
| | 201358-1 |
| PART NUMBER | |

| | | | | | |
|---|--|--|-------------------|-------------------------|--|
| <small>THIS DRAWING IS A CONTROLLED DOCUMENT FOR AMP TECHNOLOGIES. IT IS SUBJECT TO CHANGE AND THE CONTROLLING ENGINEERING ORGANIZATION SHALL BE CONTACTED FOR THE LATEST REVISION.</small> | | DWN C. REIFSNYDER 13 MAR 96 | DATE 24 JUN 96 | NAME G.A. STEINHAUER | AMP AMP Incorporated Harrisburg, PA 17105-3508 |
| DIMENSIONS: mm (INCHES) | TOLERANCES UNLESS OTHERWISE SPECIFIED: 0 PLC ± 1 PLC ± 2 PLC ±0.13 (.005) 3 PLC ± 4 PLC ± ANGLES ± | PRODUCT SPEC - APPLICATION SPEC - | SIZE A1 | CAGE CODE 00779 | DRAWING NO C-201358 |
| MATERIAL SEE TABLE | FINISH - | WEIGHT - | SCALE 4:1 | SHEET 1 OF 1 | REV T |

X-ON Electronics

Largest Supplier of Electrical and Electronic Components

Click to view similar products for [Rack & Panel Connectors](#) category:

Click to view products by [TE Connectivity](#) manufacturer:

Other Similar products are found below :

[00171410002](#) [00171420202](#) [00171440002](#) [02-014-013-5200-000](#) [613467-000](#) [CTJ112E01E-513](#) [CTJ116E03A-513](#) [66020-2](#) [CW8958-000](#)
[699886-000](#) [D250-50632](#) [70.400.3240.0](#) [70.955.2453.3](#) [733753-000](#) [F22831-000](#) [780-522-DPX34RG8-02](#) [8660-501](#) [87.060.0053.0](#)
[900709N001](#) [928358-1](#) [D-659-0061](#) [1-445717-6](#) [1484469-2](#) [1604997-2](#) [MTC100-BF1-P31CS015](#) [MTC100-KT2-0083](#) [MTC100-KT2-0123-](#)
[003](#) [MTC100-YA1-005](#) [MTC PQKT1R2PGCA](#) [MTCR-103-04S](#) [MTCX1X-100-100CS025](#) [1738331-1](#) [1757667-1](#) [1811481-1](#) [1883433-1](#)
[201046-7](#) [202648-4](#) [213364-1](#) [226503-000](#) [937028-164](#) [1663130-2](#) [172305-4](#) [AC-660022-701BP](#) [F36711-000](#) [202355-2](#) [202356-2](#) [G16S-A](#)
[G20S-AB](#) [CHA-0017-003](#) [CHA-0296](#)