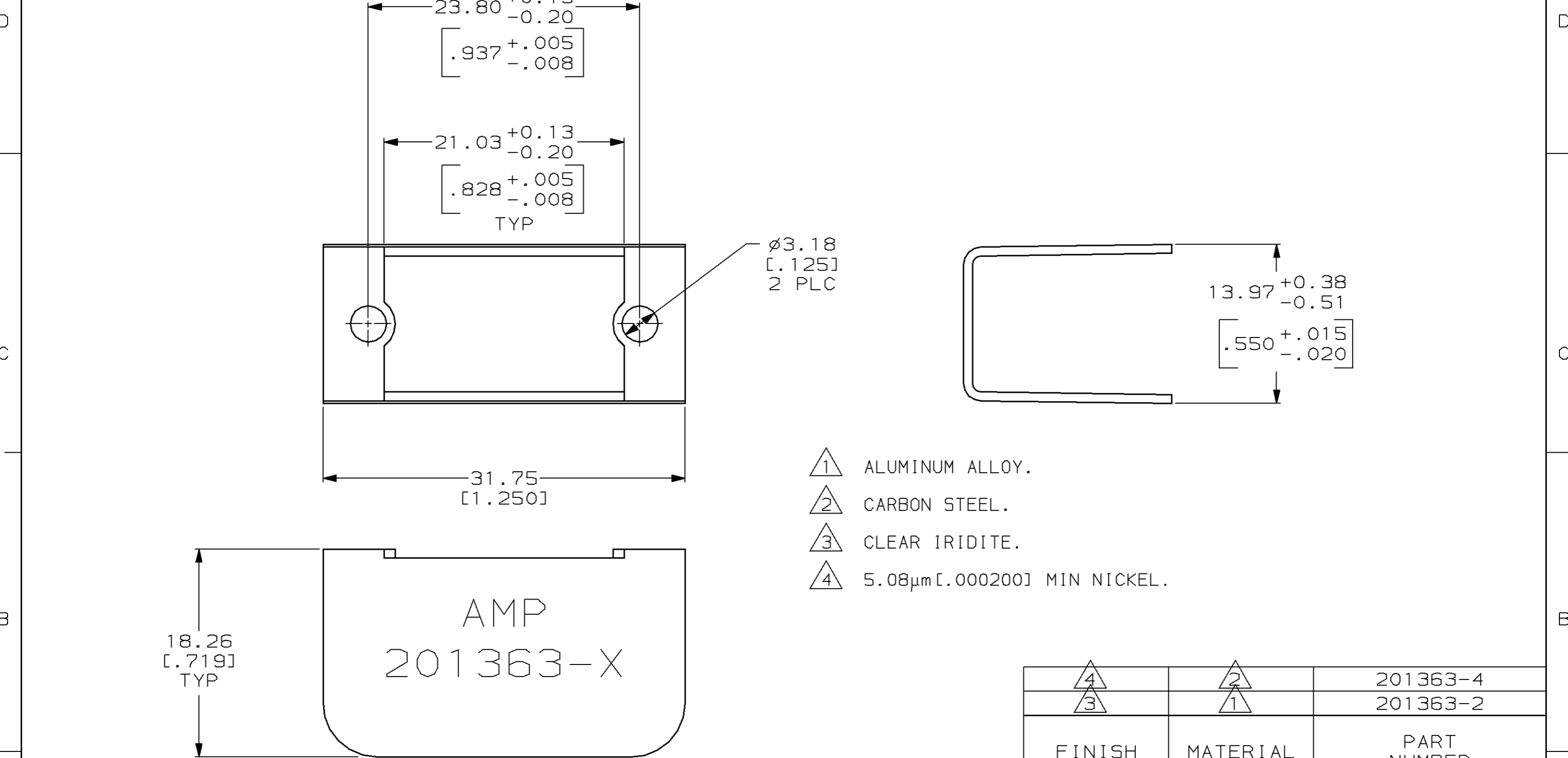


THIS DRAWING IS UNPUBLISHED. RELEASED FOR PUBLICATION, 19 .  
 © COPYRIGHT 19 BY AMP INCORPORATED. ALL RIGHTS RESERVED.

LOC	DIST	REVISIONS			
P	LTR	DESCRIPTION	DATE	DWN	APVD
BD	36	G	REDRAWN W/O CHANGE PER EC 0020-1347-95	15 APR 96	-



- ① ALUMINUM ALLOY.
- ② CARBON STEEL.
- ③ CLEAR IRIDITE.
- ④ 5.08µm [0.00200] MIN NICKEL.

FINISH	MATERIAL	PART NUMBER
④	②	201363-4
③	①	201363-2

THIS DRAWING IS A CONTROLLED DOCUMENT.		DWN C. REIFSNYDER 15 APR 96	<b>AMP</b> AMP Incorporated Harrisburg, PA 17105-3608
DIMENSIONS: mm [INCHES]		CHK R. STONE 23 MAY 96	
TOLERANCES UNLESS OTHERWISE SPECIFIED:		APVD G. STEINHAUER 21 JUN 96	NAME PIN HOOD, 14 POSITION, MINIATURE RECTANGULAR, W/O SHIELDS, M SERIES
0 PLC ±-	1 PLC ±-	PRODUCT SPEC	SIZE A3
2 PLC ±0.38 [0.015]	3 PLC ±-	APPLICATION SPEC	CAGE CODE 00779
4 PLC ±-	4 PLC ±-	WEIGHT	DRAWING NO C-201363
ANGLES ±-	FINISH SEE TABLE	CUSTOMER DRAWING	SCALE 3:1
			SHEET 1 OF 1
			REV G

## X-ON Electronics

Largest Supplier of Electrical and Electronic Components

*Click to view similar products for [Rack & Panel Connectors](#) category:*

*Click to view products by [TE Connectivity](#) manufacturer:*

Other Similar products are found below :

[00171410002](#) [00171420202](#) [00171440002](#) [02-014-013-5200-000](#) [613467-000](#) [CTJ112E01E-513](#) [CTJ116E03A-513](#) [66020-2](#) [CW8958-000](#)  
[699886-000](#) [D250-50632](#) [70.400.3240.0](#) [70.955.2453.3](#) [733753-000](#) [F22831-000](#) [780-522-DPX34RG8-02](#) [8660-501](#) [87.060.0053.0](#)  
[900709N001](#) [928358-1](#) [D-659-0061](#) [1-445717-6](#) [1484469-2](#) [1604997-2](#) [MTC100-BF1-P31CS015](#) [MTC100-KT2-0083](#) [MTC100-KT2-0123-](#)  
[003](#) [MTC100-YA1-005](#) [MTCQKT1R2PGCA](#) [MTCR-103-04S](#) [MTCX1X-100-100CS025](#) [1738331-1](#) [1757667-1](#) [1811481-1](#) [1883433-1](#)  
[201046-7](#) [202648-4](#) [205269-1](#) [213364-1](#) [226503-000](#) [937028-164](#) [1663130-2](#) [172305-4](#) [AC-660022-701BP](#) [F36711-000](#) [202355-2](#) [202356-](#)  
[2](#) [G16S-A](#) [G20S-AB](#) [CHA-0017-003](#)