



Application Tooling > Connector Seating Machines



Tooling Type: **Seating**

Features

Other

Tooling Type	Seating
--------------	---------

Product Compliance

[For compliance documentation, visit the product page on TE.com>](#)

EU RoHS Directive 2011/65/EU	Out of Scope
EU ELV Directive 2000/53/EC	Out of Scope
China RoHS 2 Directive MIIT Order No 32, 2016	Not reviewed for China RoHS compliance
EU REACH Regulation (EC) No. 1907/2006	Current ECHA Candidate List: JAN 2021 (211) Candidate List Declared Against: JAN 2021 (211) Does not contain REACH SVHC
Halogen Content	Not Yet Reviewed for halogen content
Solder Process Capability	Not applicable for solder process capability

Product Compliance Disclaimer

This information is provided based on reasonable inquiry of our suppliers and represents our current actual knowledge based on the information they provided. This information is subject to change. The part numbers that TE has identified as EU RoHS compliant have a maximum concentration of 0.1% by weight in homogenous materials for lead, hexavalent chromium, mercury, PBB, PBDE, DBP, BBP, DEHP, DIBP, and 0.01% for cadmium, or qualify for an exemption to these limits as defined in the Annexes of Directive 2011/65/EU (RoHS2). Finished electrical and electronic equipment products will be CE marked as required by Directive 2011/65/EU. Components may not be CE marked. Additionally, the part numbers that TE has identified as EU ELV compliant have a maximum concentration of 0.1% by weight in homogenous materials for lead, hexavalent chromium, and mercury, and 0.01% for cadmium, or qualify for an exemption to these limits as defined in the Annexes of Directive 2000/53/EC (ELV). Regarding the REACH Regulation, the information TE provides on SVHC in articles for this part number is based on the latest European Chemicals Agency (ECHA) 'Guidance on

requirements for substances in articles' posted at this URL: <https://echa.europa.eu/guidance-documents/guidance-on-reach>

Compatible Parts



TE Part # 2007262-1
SFP+ 1x2 Cage Assembly, Light



TE Part # 2007263-1
SFP+ 1x2 Cage Assembly



TE Part # CAT-CAP-6T
CONNECTOR PRESS FIT MACHINE



TE Part # CAT-CAPI-6T
CONNECTOR PRESS FIT MACHINE



TE Part # CAT-CBP-5T
CBP-5T MKII Benchtop Press - Servo Electric



TE Part # CAT-CMP-10TMKII
CONNECTOR PRESS FIT MACHINE



TE Part # CAT-CMP-5TMKII
CONNECTOR PRESS FIT MACHINE



TE Part # CAT-CSP-5T
CSP-5T MKII Shuttle Electric Press Machine

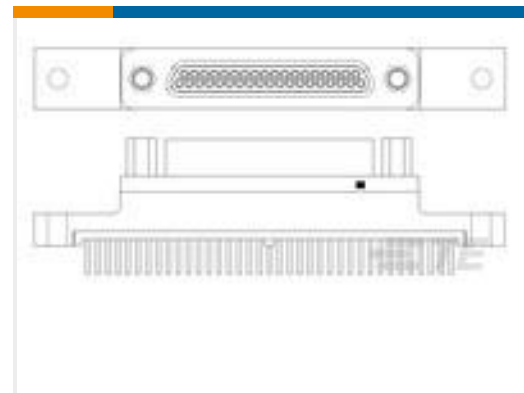
Customers Also Bought



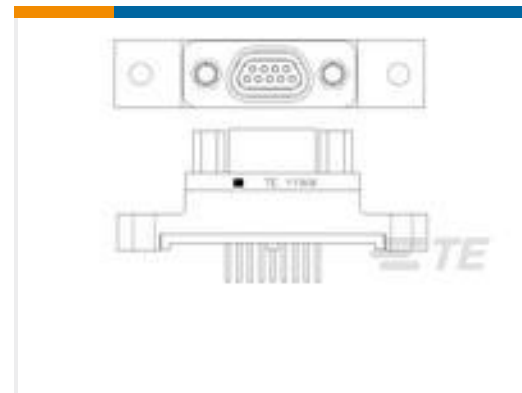
TE Part #1888247-1
20 POS SMT CONN, SFP/SFP+, 30A



TE Part #YDTS26G11-35AAV001
PLUG ASSY



TE Part #1532271-4
M83513/22-F01NP = MCKS-N1-P-37PST1



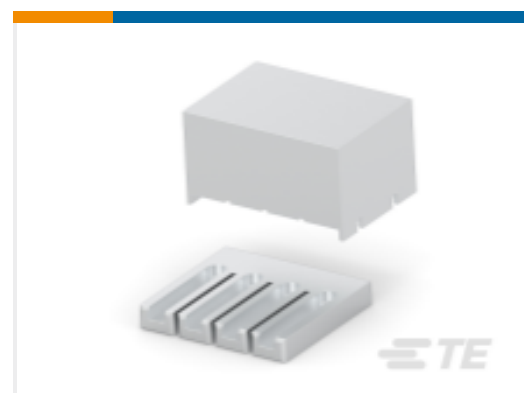
TE Part #1532274-1
M83513/25-A01CN = MCKS-C2-B-9SST1



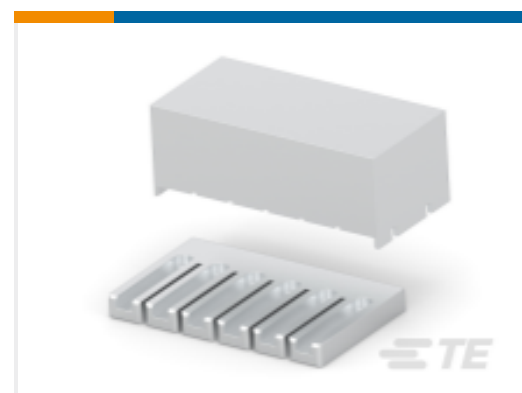
TE Part #1658012-5
MSB0.80RC-ASY200FL,-,10,-TY



TE Part #1658438-5
MSB0.80PL14ASY200FL,-,10,-TY



TE Part #2018002-1
SEATING TOOL, 1X4 KIT



TE Part #2018002-2
SEATING TOOL, 1X6 KIT



Documents

Datasheets & Catalog Pages

[TE Press-Fit Machines](#)

English

Instruction Sheets

[CONNECTOR SEATING MACHINES DOCUMENTATION REQUEST](#)

English

X-ON Electronics

Largest Supplier of Electrical and Electronic Components

Click to view similar products for [Hand Tools](#) category:

Click to view products by [TE Connectivity](#) manufacturer:

Other Similar products are found below :

[58284-1](#) [662908-1](#) [68764-0001](#) [690619-6](#) [7-354778-7](#) [768531-1](#) [821903-5](#) [822253-1](#) [854183-1](#) [854358-1](#) [992258-1](#) [1-21046-3](#) [1-22278-0](#)
[1-22278-2](#) [1-24954-2](#) [125529-5](#) [126513-1](#) [1320846-1](#) [1338618-1](#) [1338968-2](#) [1-354779-0](#) [1-354779-2](#) [1-354779-4](#) [1424443-1](#) [1424289-1](#)
[1424444-1](#) [MS24256A16](#) [1-525442-0](#) [1532195-2](#) [1538773-2](#) [1-59681-8](#) [1-59907-5](#) [1-692134-3](#) [1725760-1](#) [HT-920A-124-HTELE-RPL-KIT](#)
[1976923-1](#) [1976969-1](#) [2063794-1](#) [2063795-1](#) [2-21002-1](#) [2-21002-3](#) [2-21002-4](#) [2-21002-7](#) [2-21002-9](#) [2-21004-0](#) [229399-2](#) [229707-1](#)
[911737-2](#) [2598-5027-54](#) [91348-2](#)