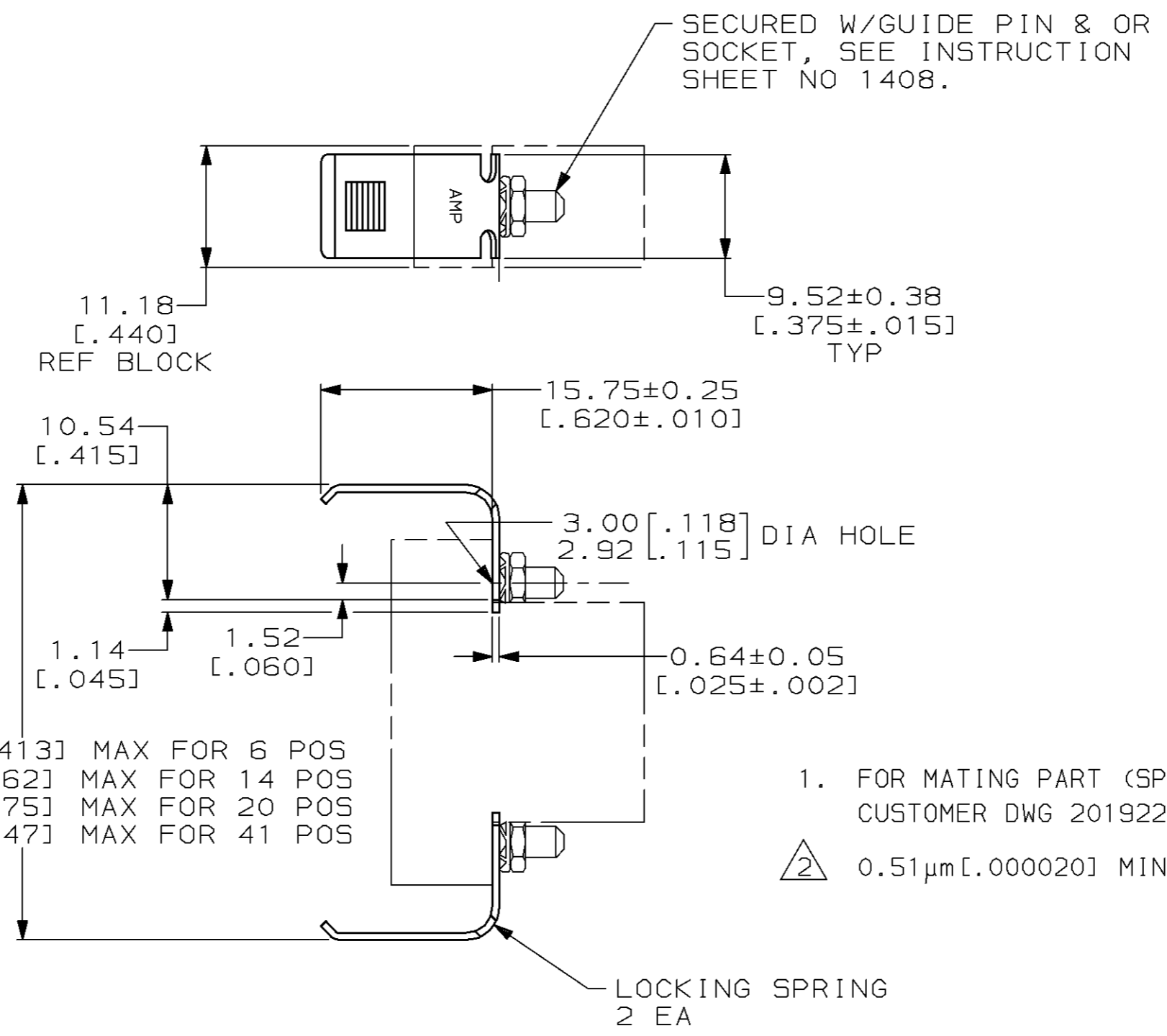


THIS DRAWING IS UNPUBLISHED. RELEASED FOR PUBLICATION ,19 .  
 © COPYRIGHT 19 BY AMP INCORPORATED. ALL RIGHTS RESERVED.

| LOC | DIST | REVISIONS                     |           |     |      |
|-----|------|-------------------------------|-----------|-----|------|
| P   | LTR  | DESCRIPTION                   | DATE      | DWN | APVD |
| BD  | 36   |                               |           |     |      |
|     |      | K REDRAWN PER EC 0020-1245-95 | 08 NOV 95 | -   | -    |



- FOR MATING PART (SPRING CATCH) SEE CUSTOMER DWG 201922.
- 0.51µm [.000020] MIN NICKEL OVER COPPER FLASH.

|  |              |                                    |  |    |       |    |       |              |       |    |       |    |        |    |
|--|--------------|------------------------------------|--|----|-------|----|-------|--------------|-------|----|-------|----|--------|----|
| THIS DRAWING IS A CONTROLLED DOCUMENT FOR AMP INCORPORATED. IT IS SUBJECT TO CHANGE AND THE CONTROLLING ENGINEERING ORGANIZATION SHOULD BE CONTACTED FOR THE LATEST REVISION.  |              | DWN<br>C. REIFSNYDER<br>08 NOV 95  | <b>AMP</b> AMP Incorporated<br>Harrisburg, PA 17105-3608                               |    |       |    |       |              |       |    |       |    |        |    |
| DIMENSIONS:<br>mm [INCHES]   |              | CHK<br>R. STONE<br>17 NOV 95       |  |    |       |    |       |              |       |    |       |    |        |    |
| TOLERANCES UNLESS OTHERWISE SPECIFIED:   |              | APVD<br>G. STEINHAUER<br>19 NOV 95 | NAME<br>LOCKING SPRING KIT,<br>UNASSEMBLED, FOR 6, 14,<br>20 & 41 POS BLOCKS, M SERIES |    |       |    |       |              |       |    |       |    |        |    |
| <table border="0"> <tr><td>0 PLC</td><td>±-</td></tr> <tr><td>1 PLC</td><td>±-</td></tr> <tr><td>2 PLC</td><td>±0.13 [.005]</td></tr> <tr><td>3 PLC</td><td>±-</td></tr> <tr><td>4 PLC</td><td>±-</td></tr> <tr><td>ANGLES</td><td>±-</td></tr> </table> |              | 0 PLC                              |  | ±- | 1 PLC | ±- | 2 PLC | ±0.13 [.005] | 3 PLC | ±- | 4 PLC | ±- | ANGLES | ±- |
| 0 PLC  | ±-           |                                    |  |    |       |    |       |              |       |    |       |    |        |    |
| 1 PLC  | ±-           |                                    |  |    |       |    |       |              |       |    |       |    |        |    |
| 2 PLC  | ±0.13 [.005] |                                    |  |    |       |    |       |              |       |    |       |    |        |    |
| 3 PLC  | ±-           |                                    |  |    |       |    |       |              |       |    |       |    |        |    |
| 4 PLC  | ±-           |                                    |  |    |       |    |       |              |       |    |       |    |        |    |
| ANGLES   | ±-           |                                    |  |    |       |    |       |              |       |    |       |    |        |    |
| MATERIAL<br>CARBON STEEL   |              | FINISH<br>△                        | APPLICATION SPEC<br>-  |    |       |    |       |              |       |    |       |    |        |    |
|  |              | WEIGHT<br>-                        | SIZE<br>A3   |    |       |    |       |              |       |    |       |    |        |    |
|  |              | CUSTOMER DRAWING                   | CAGE CODE<br>00779   |    |       |    |       |              |       |    |       |    |        |    |
|  |              |                                    | DRAWING NO<br>C-201921   |    |       |    |       |              |       |    |       |    |        |    |
|  |              |                                    | SCALE<br>2:1   |    |       |    |       |              |       |    |       |    |        |    |
|  |              |                                    | SHEET<br>1 OF 1  |    |       |    |       |              |       |    |       |    |        |    |
|  |              |                                    | REV<br>K   |    |       |    |       |              |       |    |       |    |        |    |

## X-ON Electronics

Largest Supplier of Electrical and Electronic Components

*Click to view similar products for [Rack & Panel Connectors](#) category:*

*Click to view products by [TE Connectivity](#) manufacturer:*

Other Similar products are found below :

[00171410002](#) [00171420202](#) [00171440002](#) [02-014-013-5200-000](#) [613467-000](#) [CTJ112E01E-513](#) [CTJ116E03A-513](#) [66020-2](#) [CW8958-000](#)  
[699886-000](#) [D250-50632](#) [70.400.3240.0](#) [70.955.2453.3](#) [733753-000](#) [F22831-000](#) [780-522-DPX34RG8-02](#) [8660-501](#) [87.060.0053.0](#)  
[900709N001](#) [928358-1](#) [D-659-0061](#) [1-445717-6](#) [1484469-2](#) [1604997-2](#) [MTC100-BF1-P31CS015](#) [MTC100-KT2-0083](#) [MTC100-KT2-0123-](#)  
[003](#) [MTC100-YA1-005](#) [MTCQKT1R2PGCA](#) [MTCR-103-04S](#) [MTCX1X-100-100CS025](#) [1738331-1](#) [1757667-1](#) [1811481-1](#) [1883433-1](#)  
[201046-7](#) [202648-4](#) [205269-1](#) [213364-1](#) [226503-000](#) [937028-164](#) [1663130-2](#) [172305-4](#) [AC-660022-701BP](#) [F36711-000](#) [202355-2](#) [202356-](#)  
[2](#) [G16S-A](#) [G20S-AB](#) [CHA-0017-003](#)