

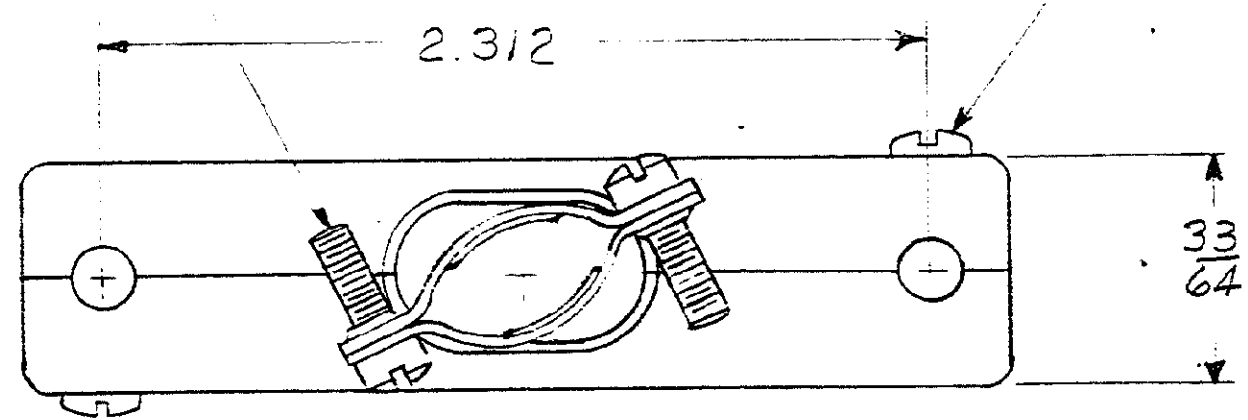
© 1963 BY AMP INCORPORATED. ALL RIGHTS RESERVED. AMP PRODUCTS COVERED BY PATENTS AND/OR PATENTS PENDING. APPROVED PER GOVT CONTRACT NO.

NUMBER 202383-2

REVISIONS				
SYM	ZONE	DESCRIPTION	DATE	APPROVAL
O		RELEASED C-202383-2 WAS %M 5001-590-2	12-3-63	
A		REV.	7-1-75	
B		REV PER ECN E-89Z	AH III 4-5-77	
C		REV PER ECN BD 4273	9-25-70	DB

#4-40 UNC SCREW (FIL. HEAD)  
ZINC FLATED COLD ROLLED STL,  
2 REQ'D.)

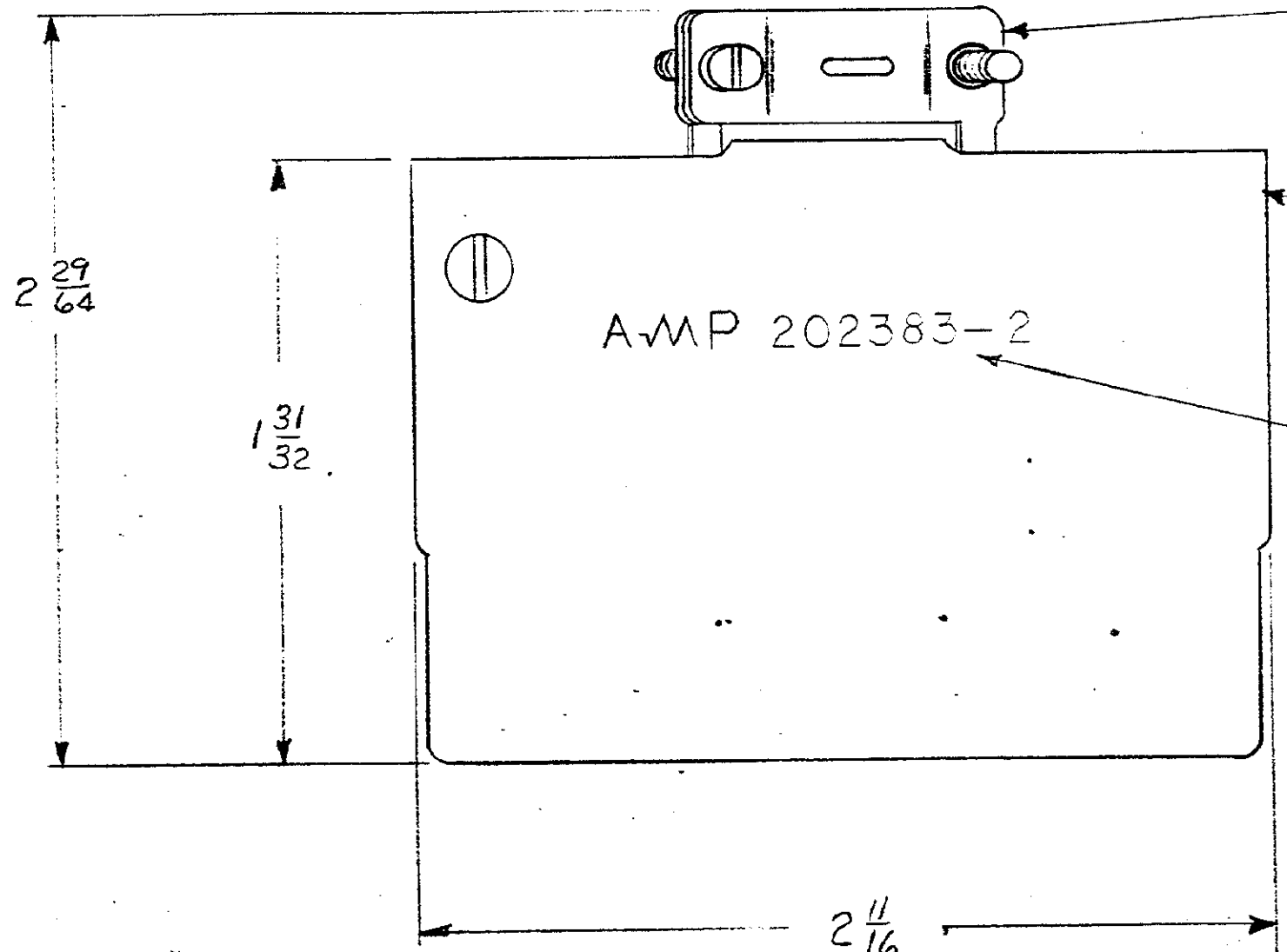
#4-40 UNC. SCREW  
(PAN HEAD) SST, PASSIVATED  
(2 REQ'D)



CABLE CLAMP (IN HALVES)  
C.R. STEEL : CAD. PLATED

SHIELD (IN HALVES)  
C.R. STEEL : CAD. PLATED

AMP STAMP & PART NO.  
STAMPED IN THIS AREA



1. CLAMP WILL ACCEPT 7/16 DIA. CABLE:
2. PARTS ARE PACKAGED UNASSEMBLED.

AMP INFO LOC PRINT DWT BD 39 C	QTY RECD	NOMENCLATURE OR DESCRIPTION	PART OR IDENTIFYING NO		
LIST OF MATERIALS OR PARTS LIST					
UNLESS OTHERWISE SPECIFIED DIMENSIONS ARE IN INCHES TOLERANCES ON		SIGNATURE		DATE	
FRACTIONS ± 1/64	DECIMALS ± #	ANGLES ± #	DR R. Miller	10-21-63	
MATERIAL SEE CALLOUT			CHK J. Kaufman	12-3-63	
HEAT TREAT			DESIGN ENGR Allertine	12-3-63	
FINISH			APPR C. Rinto	12-5-63	
OTHER APPR			AMP INCORPORATED HARRISBURG, PENNSYLVANIA		
CODE IDENT NO 00779		SIZE C	NUMBER 202383-2		
SCALE 2-1		WT	CALC	ACTUAL	SHEET

MOD 4

SHIELD KIT, 41 POSITION,  
UNASSEMBLED, NARROW, M SERIES

CUSTOMER DRAWING

## X-ON Electronics

Largest Supplier of Electrical and Electronic Components

*Click to view similar products for [Rack & Panel Connectors](#) category:*

*Click to view products by [TE Connectivity](#) manufacturer:*

Other Similar products are found below :

[00171410002](#) [00171420202](#) [00171440002](#) [02-014-013-5200-000](#) [613467-000](#) [CTJ112E01E-513](#) [CTJ116E03A-513](#) [66020-2](#) [CW8958-000](#)  
[699886-000](#) [D250-50632](#) [70.400.3240.0](#) [70.955.2453.3](#) [733753-000](#) [F22831-000](#) [780-522-DPX34RG8-02](#) [8660-501](#) [87.060.0053.0](#)  
[900709N001](#) [928358-1](#) [D-659-0061](#) [1-445717-6](#) [1484469-2](#) [1604997-2](#) [MTC100-BF1-P31CS015](#) [MTC100-KT2-0083](#) [MTC100-KT2-0123-](#)  
[003](#) [MTC100-YA1-005](#) [MTCQKT1R2PGCA](#) [MTCR-103-04S](#) [MTCX1X-100-100CS025](#) [1738331-1](#) [1757667-1](#) [1811481-1](#) [1883433-1](#)  
[201046-7](#) [202648-4](#) [213364-1](#) [226503-000](#) [937028-164](#) [1663130-2](#) [172305-4](#) [F36711-000](#) [202355-2](#) [202356-2](#) [G16S-A](#) [G20S-AB](#) [CHA-](#)  
[0017-003](#) [CHA-0296](#) [354654-000](#)