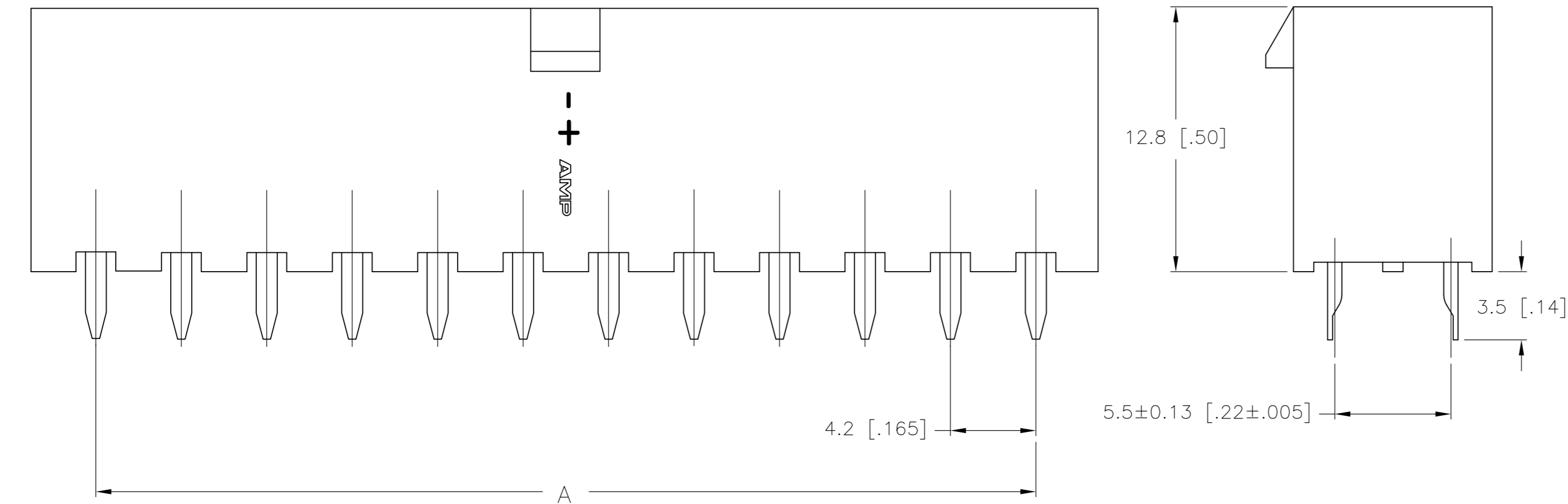
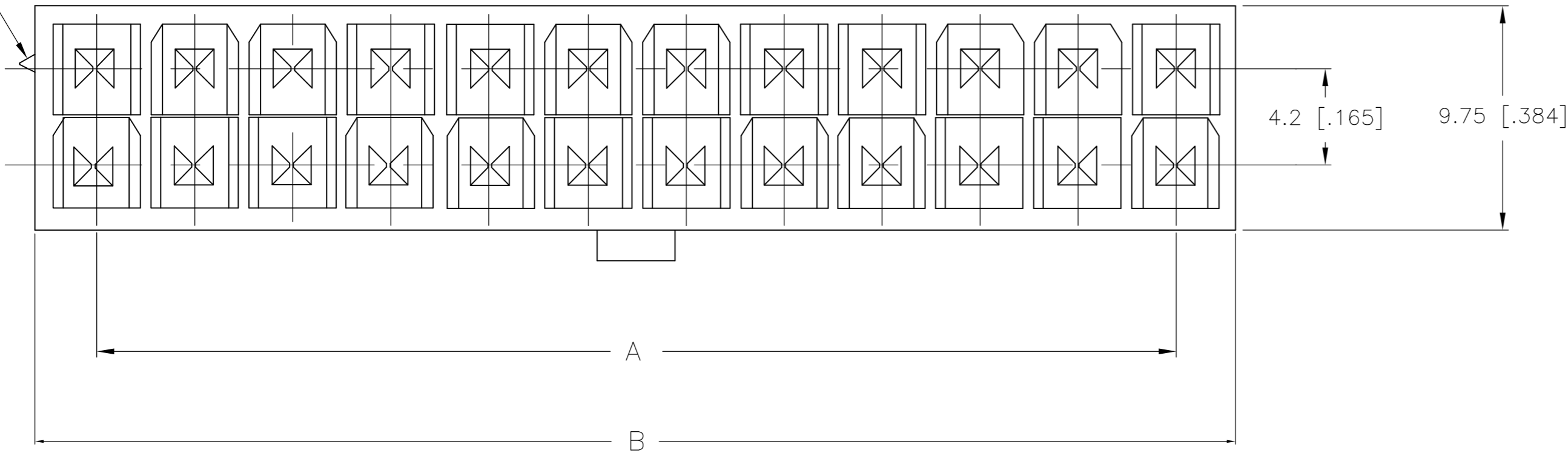


THIS DRAWING IS UNPUBLISHED. RELEASED FOR PUBLICATION  
 © COPYRIGHT - By - ALL RIGHTS RESERVED.

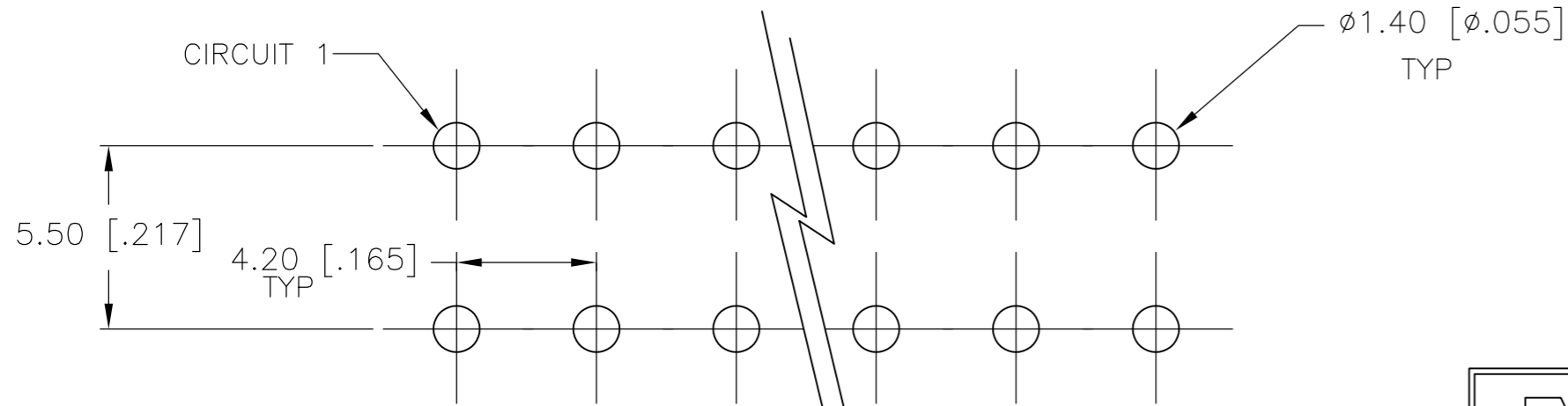
LOC		DIST		REVISIONS			
P	LTR	DESCRIPTION		DATE	DWN	APVD	
	B	ECO 12-000826		13JAN12	JR	SM	

POSITION 1  
IDENTIFICATION FEATURE

1 MATERIAL: HOUSING: NYLON, UL94V-2, BLACK  
CONTACTS: BRASS, TIN-PLATED

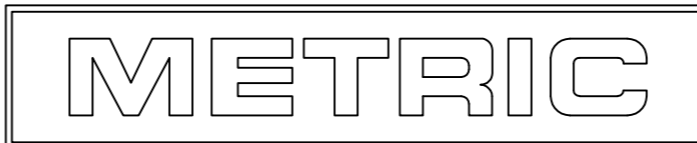


24	46.2±0.25 [1.82±.01]	51.6 [2.03]	2-2029131-4
22	42.0±0.25 [1.65±.01]	47.4 [1.87]	2-2029131-2
20	37.8±0.25 [1.49±.01]	43.2 [1.70]	2-2029131-0
18	33.6±0.25 [1.32±.01]	39.0 [1.54]	1-2029131-8
16	29.4±0.25 [1.16±.01]	34.8 [1.37]	1-2029131-6
14	25.2±0.25 [.99±.01]	30.6 [1.21]	1-2029131-4
12	21.0±0.25 [.83±.01]	26.4 [1.04]	1-2029131-2
10	16.8±0.13 [.66±.005]	22.2 [.87]	1-2029131-0
8	12.6±0.13 [.50±.005]	18.0 [.71]	2029131-8
6	8.4±0.13 [.33±.005]	13.8 [.54]	2029131-6
4	4.2±0.13 [.17±.005]	9.6 [.38]	2029131-4
2		5.4 [.21]	2029131-2
POS	A	B±0.25[.01]	PART NUMBER



2-2029131-4 SHOWN

THIS DRAWING IS A CONTROLLED DOCUMENT.		DWN K. WHITAKER 12AUG2008
DIMENSIONS: mm [INCHES]		CHK C. CASH 12AUG2008
TOLERANCES UNLESS OTHERWISE SPECIFIED:		APVD C. CASH 12AUG2008
0 PLC ±		NAME
1 PLC ± 0.13 [.005]		TE Connectivity
2 PLC ± 0.25 [.01]		VERTICAL HEADER, BLACK, WITHOUT PEGS, WITH DRAIN HOLES, VAL-U-LOK(TM)
3 PLC ± -		SIZE CAGE CODE DRAWING NO RESTRICTED TO
4 PLC ± -		A2 00779 C-2029131 -
ANGLES ±		WEIGHT
FINISH		CUSTOMER DRAWING
1		SCALE 5:1 SHEET 1 OF 1 REV B



## X-ON Electronics

Largest Supplier of Electrical and Electronic Components

*Click to view similar products for [Headers & Wire Housings](#) category:*

*Click to view products by [TE Connectivity](#) manufacturer:*

Other Similar products are found below :

[95000-104TRLF](#) [10135584-644402LF](#) [DF62W-EP2022PCA](#) [95000-106TRLF](#) [DF62W-2022SCA](#) [DF62W-EP2022PC](#) [2203348](#) [DF62W-2022SC](#) [1084018](#) [1029039](#) [1084017](#) [802-10-012-10-002000](#) [1112640](#) [1112639](#) [000-34000](#) [0009482033](#) [0009507031](#) [57102-S06-03LF](#) [57202-S52-04LF](#) [PCN6-15S-2.5E](#) [0039019024](#) [58102-G61-06LF](#) [582553-1](#) [0009485154](#) [0009508121](#) [0022285053](#) [0050291907](#) [018731A](#) [LY20-4P-DT1-P1E-BR](#) [02.125.8002.8](#) [60101931](#) [60598-1 \(Cut Strip\)](#) [M1625-3R/100](#) [61062-3](#) [61082-181009](#) [636-1427](#) [638009-1](#) [641938-9](#) [641991-4](#) [644168-1](#) [647662-1](#) [65039-019ELF](#) [65817-002LF](#) [65817-015LF](#) [65863-015LF](#) [66207-023LF](#) [67016-026LF](#) [67046-001LF](#) [67095-007LF](#) [67230-005LF](#)