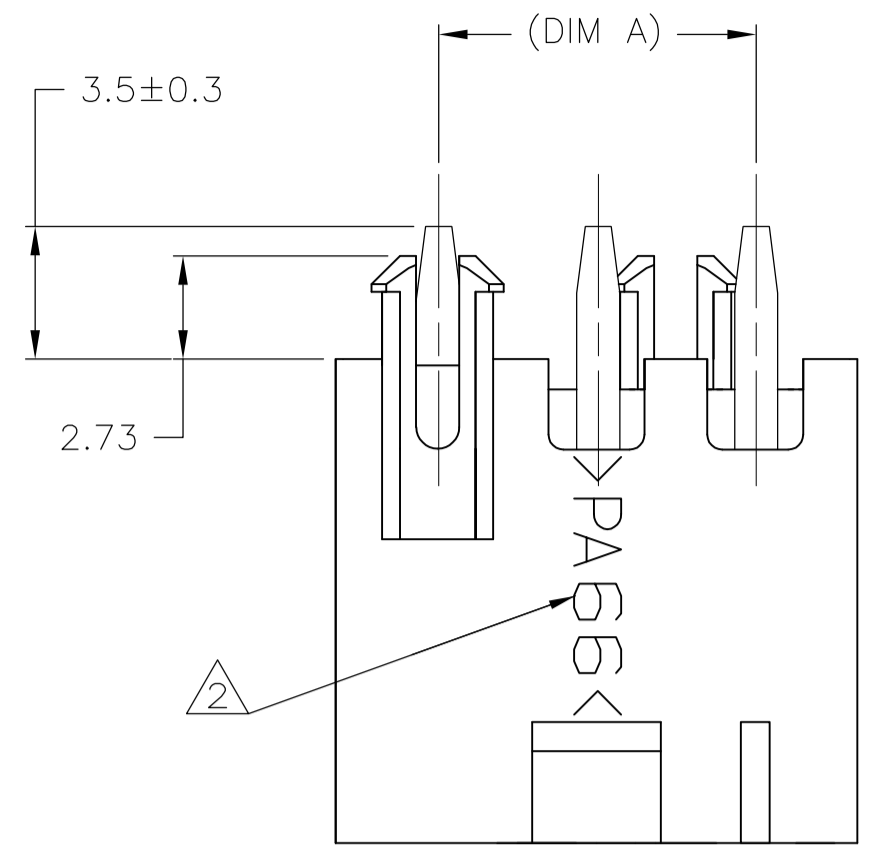
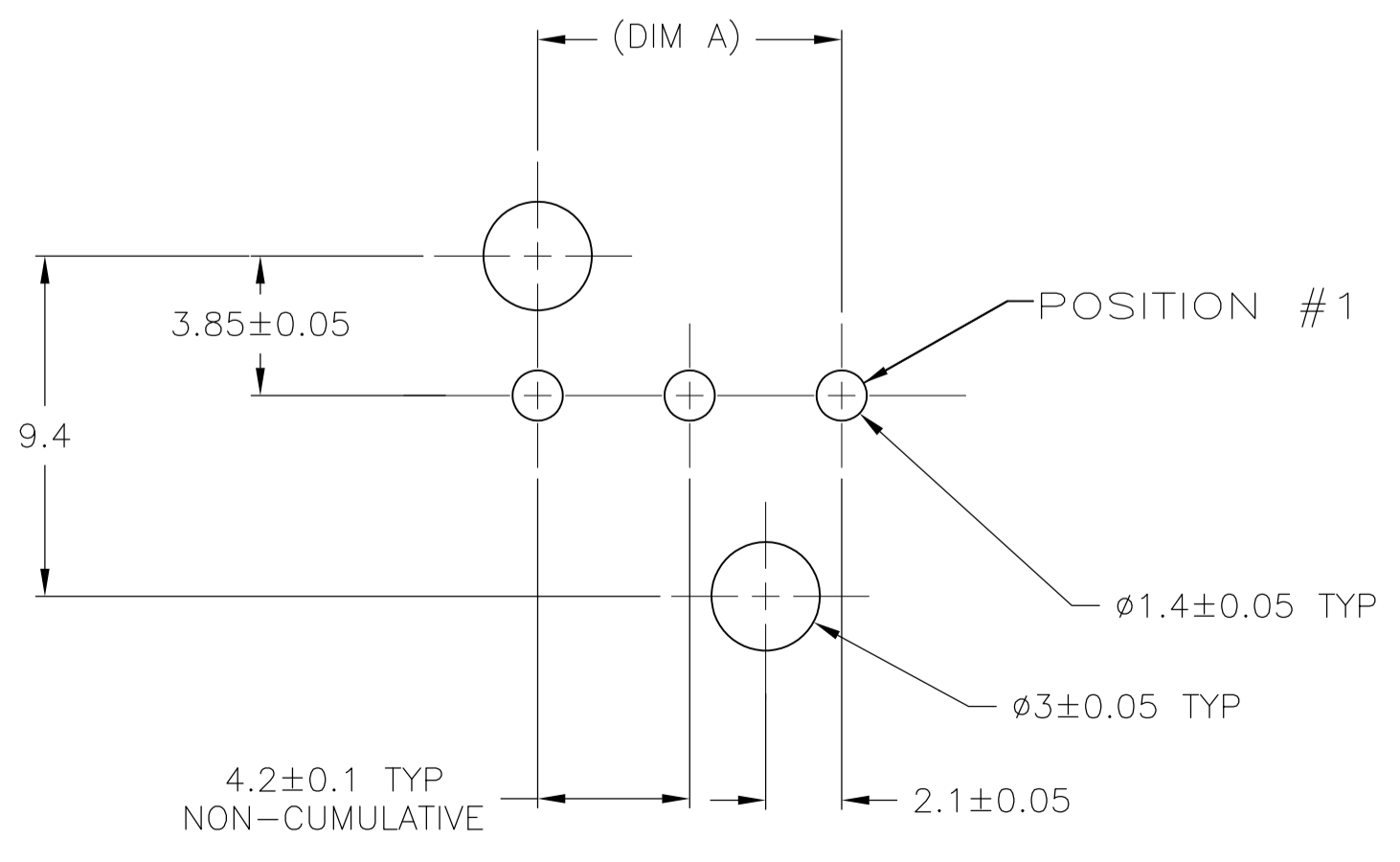
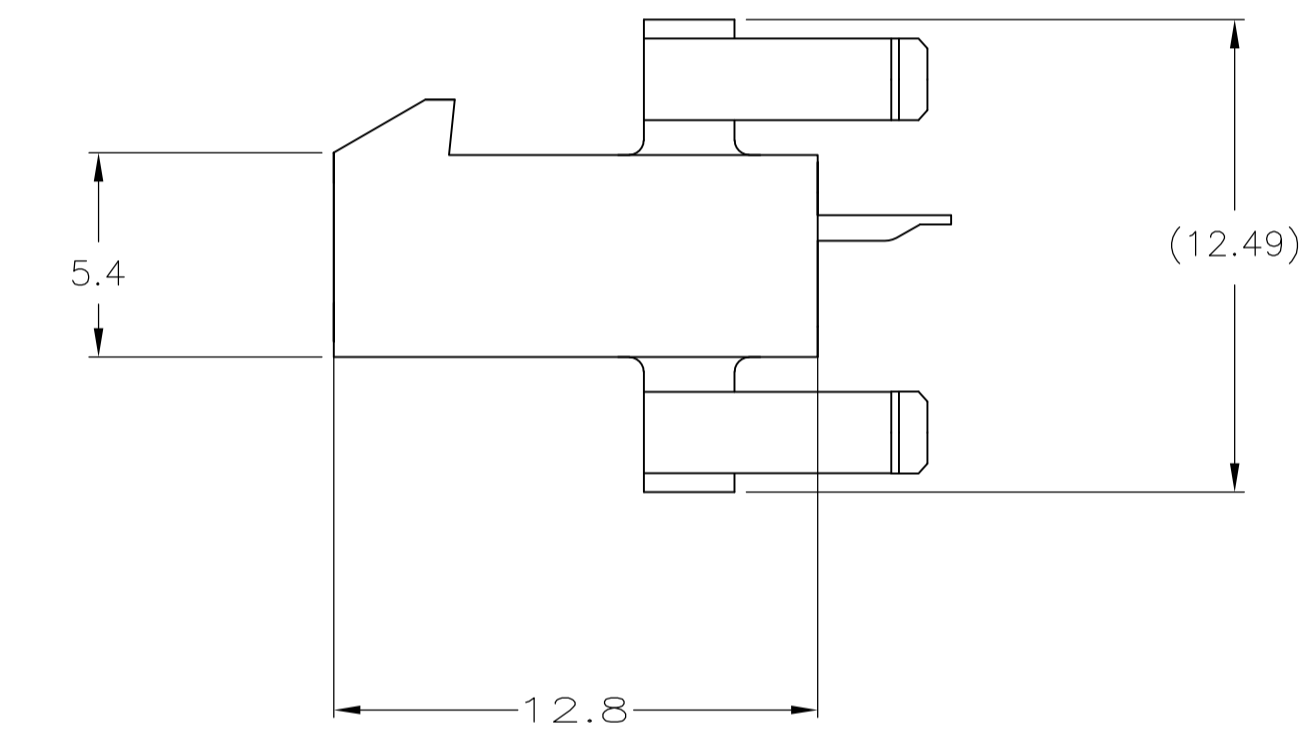
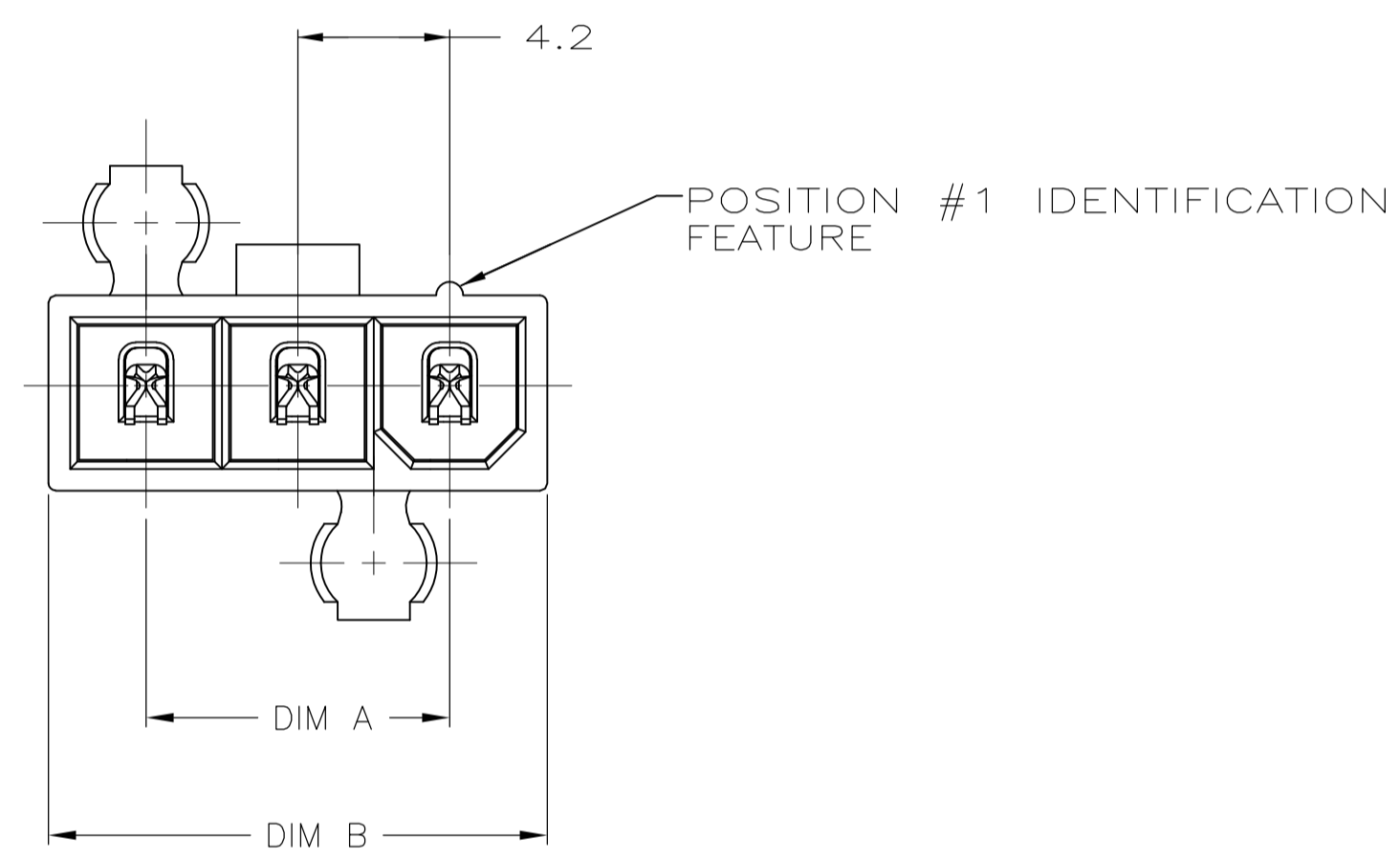


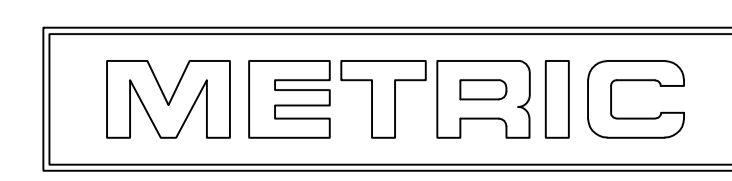
LOC		DIST		REVISIONS			
P	LTR	DESCRIPTION	DATE	DMN	APVD		
A		WR-08-45	23SEP2008	KW	CC		
B		REVISED ECR-14-015945	28OCT2014	A.Z	D.Z		



- ⚠ MATERIAL: HOUSING - NYLON 66 GF20, UL94V-0, NATURAL.
CONTACTS - BRASS, TIN PLATED.
- ⚠ TYCO ELECTRONICS LOGO AND MATERIAL ID MAY BE LOCATED ON EITHER LONG SIDE OF PART.
- 3. GLOW WIRE APPROVED, CONTACT TYCO ELECTRONICS ENGINEERING FOR SPECIFICATION.



RECOMMENDED MOUNTING HOLE PATTERN FOR 1.78 MAX THICK P.C. BOARD COMPONENT SIDE SHOWN



22.2	16.8	5	2029181-5
18	12.6	4	2029181-4
13.8	8.4	3	2029181-3
DIM B	DIM A	NO. OF POSITIONS	PART NO

THIS DRAWING IS A CONTROLLED DOCUMENT.		DIN K. WHITAKER 23SEP2008		TE Connectivity	
DIMENSIONS: mm		CHK C. CASH 23SEP2008			
TOLERANCES UNLESS OTHERWISE SPECIFIED:		APVD C. CASH 23SEP2008		NAME	
0. PLC ± -		PRODUCT SPEC		PLUG ASSEMBLY, VERTICAL, SINGLE ROW, W/O DRAIN HOLES, VAL-U-LOK(TM)	
1. PLC ± 0.2		APPLICATION SPEC		SIZE	
2. PLC ± 0.13		114-13172		CAGE CODE	
3. PLC ± -		DRAWING NO		DRAWING NO	
4. PLC ± -		100779		C=2029181	
ANGLES ± ± 0°30'		WEIGHT		RESTRICTED TO	
MATERIAL		CUSTOMER DRAWING		SCALE N/A	
FINISH		SHEET 1 OF 1		REV B	

X-ON Electronics

Largest Supplier of Electrical and Electronic Components

Click to view similar products for [Headers & Wire Housings](#) category:

Click to view products by [TE Connectivity](#) manufacturer:

Other Similar products are found below :

[892-18-020-10-001101](#) [58102-G61-06LF](#) [582553-1](#) [0009485154](#) [009176003701906](#) [0050291907](#) [LY20-4P-DT1-P1E-BR](#) [02.125.8002.8](#)
[609-3404](#) [61062-3](#) [61082-181009](#) [622-3653LF](#) [63453-116](#) [636-1030](#) [636-1427](#) [636-3427](#) [636-4007](#) [641938-9](#) [641991-4](#) [644827-2](#) [65817-](#)
[010LF](#) [65817-015LF](#) [65863-015LF](#) [66207-023LF](#) [67095-007LF](#) [67601157](#) [68645-018](#) [68648-049](#) [70.362.1628.0](#) [70-4210](#) [70-4226B](#) [70-](#)
[4853B](#) [707-5020](#) [707-5028](#) [71.350.2428.0](#) [71918-208LF](#) [71961-016LF](#) [733-134](#) [733-162](#) [754199-000](#) [760-3052](#) [787-8014-00](#) [79531-3000](#)
[FCN-360C032-B](#) [FCN-367T-T012/H](#) [FCN-723D010/2](#) [80.063.4001.1](#) [800-90-001-10-001000](#) [800-90-010-10-002000](#) [801-43-002-10-013000](#)