

REVISIONS		
LTR	DESCRIPTION	DATE
D	REVISED PER ECO-11-002238	01/31/2011

NOTES:

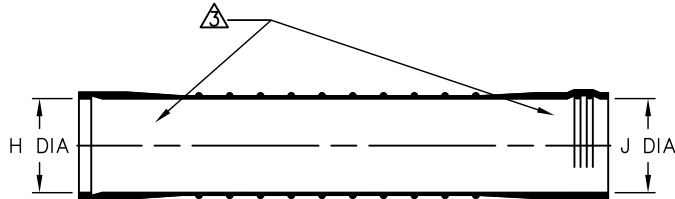
- ALL DIMENSIONS ARE IN INCHES
[MILLIMETERS]
- DIMENSIONS APPEARING IN TABLE ARE AS FOLLOWS:
a - AS SUPPLIED
b - AFTER UNRESTRICTED RECOVERY

3. COATING (ADHESIVE): IS OPTIONAL AS SUPPLIED DIMENSIONS APPEARING IN TABLE ARE FOR UNCOATED PARTS. WHEN COATING IS ADDED, ENTRY DIAMETER WILL BE REDUCED BY .06 [1.5] MAX.

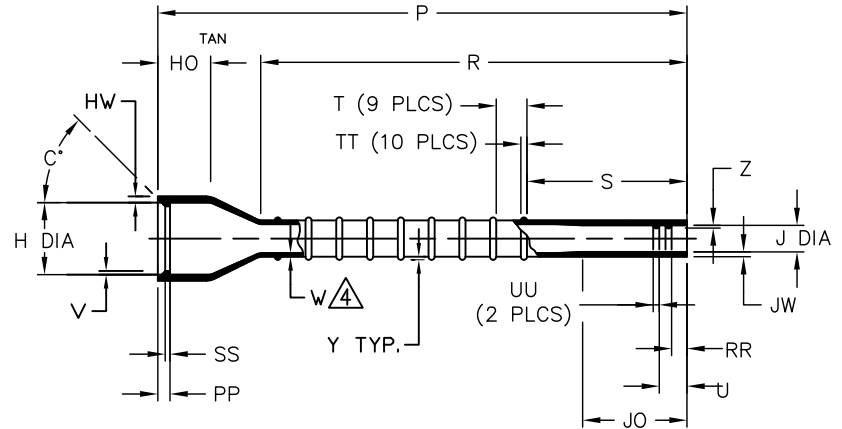
4. "W" DIMENSION APPLIES IN RIBBED AREA OF PART ONLY.

5. ORDERING INFORMATION

BASE PART NUMBER 202A917
 MATERIAL DASH NUMBER -X -XX /XX -0
 -3 POLYOLEFIN, SEMI RIGID (RT-301)
 -4 POLYOLEFIN, FLEXIBLE (RT-1304)
 -6 SILICONE (RT-602)
 MODIFICATION NUMBER _____
 ADHESIVE SLASH NUMBER _____
 SEE COMPATIBILITY CHART BELOW
 COLOR DESIGNATOR _____



AS SUPPLIED



AFTER UNRESTRICTED RECOVERY

TABLE OF DIMENSIONS

PART DESCRIPTION	H		J			P	R	S	T	U	PP	RR	SS	TT
	MIN a	MAX b	MIN -3,-4 a	MIN -49 a	MAX b	±.25 b	±.25 b	±.12 b	.05 b	±.03 b	±.03 b	±.03 b	±.03 b	±.03 b
202A917	1.45 [36,8]	1.17 [29,7]	1.45 [36,8]	1.00 [25,4]	.36 [9,1]	9.00 [228,6]	7.35 [186,7]	1.93 [49,0]	.50 [12,7]	.28 [7,1]	.20 [5,1]	.15 [3,8]	.06 [1,5]	.06 [1,5]
PART DESCRIPTION	UU	HO	JO	HW	JW	W	V	Y	Z	C°				
202A917	±.02 b	±.08 b	±.12 b	±.02 b	±.02 b	±.02 b	±.02 b	±.02 b	±.01 b	±5° b				
202A917	.03 [0,8]	.86 [21,8]	1.20 [30,5]	.10 [2,5]	.08 [2,0]	.05 [1,3]	.04 [1,0]	.04 [1,0]	.03 [0,8]	45°				

CUSTOMER DRAWING

COMPATIBILITY CHART

MATERIAL DASH NO.	ADHESIVE (COATING) SLASH NUMBER	ADHESIVE (COATING) S NUMBER
-3	/42; /86	S-1017; S-1048
-4	/42; /86	S-1017; S-1048
-6	N/A	N/A

UNLESS OTHERWISE SPECIFIED DIMENSIONS ARE INCHES. METRIC DIMENSIONS ARE IN BRACKETS.
 DECIMAL TOLERANCES
 .XXX ± 0.005 [0.13 mm]
 .XX ± 0.01 [0.25 mm]
 .X ± 0.1 [0.50 mm]
 ANGLE TOLERANCE
 .X ± 1 DEG.
 TYCO ELECTRONICS RESERVES THE RIGHT TO AMEND THIS DRAWING AT ANY TIME. USERS SHOULD EVALUATE THE SUITABILITY OF THE PRODUCT FOR THEIR APPLICATION.

DRAWN
 UNGUYEN
 APPROVED
 DHURRELL
 THIRD ANGLE PROJECTION

Tyco Electronics Raychem Molded Parts
 305 Constitution Dr
 Menlo Park, CA 94025

TITLE
**BOOT, STRAIGHT,
 WITH LIP AND RIPS**

SIZE **B** CODE IDENT. NO. **06090** DWG. NO. **202A917**

© 2003-2011 Tyco Electronics Corporation. All rights reserved. DO NOT SCALE THIS DRAWING SHEET 1 OF 1

X-ON Electronics

Largest Supplier of Electrical and Electronic Components

Click to view similar products for [Heat Shrink Cable Boots & End Caps](#) category:

Click to view products by [TE Connectivity](#) manufacturer:

Other Similar products are found below :

[577159N001](#) [645494-000](#) [CX4132-000](#) [687025-000](#) [705331-000](#) [718446-000](#) [725666N001](#) [729257-000](#) [F27131-000](#) [F85868-000](#) [770-003S106W2](#) [806542N001](#) [807507-000](#) [808059-000](#) [808362-000](#) [808618-000](#) [809125-000](#) [809130-000](#) [809218-000](#) [812014-000](#) [812047-000](#) [813166-000](#) [813767N002](#) [814741-000](#) [819117N001](#) [823026-000](#) [823070-000](#) [825002-000](#) [841189N001](#) [861471-000](#) [866647-000](#) [879515-000](#) [937577-000](#) [957073-000](#) [982033-2](#) [A77813-000](#) [R280576000](#) [D96192-000](#) [163549-000](#) [MTPSRBCL-C](#) [1954015-1](#) [200W531-3-0](#) [202A163-4-0-CS5067](#) [202A343-3-00-0](#) [202B221-13-0](#) [202B231-13-0](#) [202B563-25-07-0](#) [202C241-13-0](#) [202D121-4-01/86-0](#) [202D132-4-07/42-0](#)