

# Thermofit<sup>®</sup> Molded Parts

## Specification Control Drawing

Part Number : 202C221 thru 305

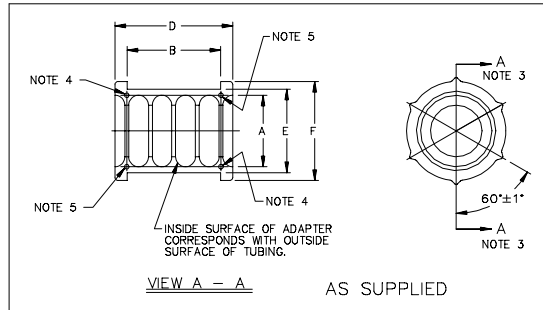
Description : Adapter, Split-Type  
Convalex Tubing**NOTES**1. All dimensions are in  $\frac{\text{Inches}}{[\text{Millimeters}]}$ 2. Dimensions appearing in table  
are as follows:  
a - As Supplied(SEE REVERSE SIDE  
FOR ADDITIONAL NOTES)

TABLE OF DIMENSIONS						
PART NUMBER	FIT CONVOLEX TUBING SIZE	A $\pm 0.02$ [ $\pm 0.51$ ]	B	D $\pm 0.03$ [ $\pm 0.76$ ]	E $\pm 0.02$ [ $\pm 0.51$ ]	F MAX
		a	a	a	a	
202C221	9/32	.41 [10.4]	.52±.01 [13.2±0.25]	.66 [16.8]	.51 [13.0]	.65 [16.5]
202C231	3/8	.51 [13.0]	.52±.01 [13.2±0.25]	.66 [16.8]	.63 [16.0]	.78 [19.8]
202C241	7/16	.59 [15.0]	.52±.01 [13.2±0.25]	.76 [19.3]	.69 [17.5]	.84 [21.3]
202C251	1/2	.65 [16.5]	.52±.01 [13.2±0.25]	.76 [19.3]	.76 [19.3]	.91 [23.1]
202C261	5/8	.78 [19.8]	.52±.01 [13.2±0.25]	.76 [19.3]	.87 [22.1]	1.02 [25.9]
202C272	3/4	.92 [23.4]	.52±.01 [13.2±0.25]	.76 [19.3]	1.06 [26.9]	1.21 [30.7]
202C282	7/8	1.07 [27.2]	.52±.01 [13.2±0.25]	.76 [19.3]	1.19 [30.2]	1.34 [34.0]
202C292	1	1.19 [30.2]	.52±.01 [13.2±0.25]	.76 [19.3]	1.31 [33.3]	1.46 [37.1]
202C302	1-1/4	1.43 [36.3]	.52±.01 [13.2±0.25]	.76 [19.3]	1.56 [39.6]	1.71 [43.4]
202C305	1-5/8	1.72 [43.7]	.52±.02 [13.2±0.51]	.76 [19.3]	1.97 [50.0]	2.12 [53.8]

**Raychem**RAYCHEM CORPORATION  
300 CONSTITUTION DRIVE  
MENLO PARK, CALIFORNIA 94025

Revision : J

Date : 6/14/90

Part Number : 202C221 thru 305

Description : Adapter, Split-Type  
Convalex Tubing

# Thermofit<sup>®</sup> Molded Parts

## Specification Control Drawing

Part Number : 202C221 thru 305

Description : Adapter, Split-Type  
Convalex Tubing

COMPATABILITY CHART					
MATERIAL DASH NO.	MATERIAL DESCRIPTION	RT SPEC	COATING SLASH NO.	COATING S NO.	COATING DESCRIPTION
-13	Nylon, Glass Filled				

**ORDERING INFORMATION**

Base part number 202CXXX -X -XX

Material dash number                     

(See Compatibility Chart)

Modification number                     

(If necessary, see front of scd binder for a complete list)

**NOTES**

- Adapters consist of two mating halves.
- Mating holes for dowel pins.
- Dowel Pins.
- Dimension sized to accommodate standard AN 742 or MS 21919 cable clamp so adapter may be used as clamp body.

THIS DRAWING IS SUBJECT TO CHANGE WITHOUT NOTICE; CONSULT YOUR  
NEAREST FIELD REPRESENTATIVE FOR CURRENT REVISION**Raychem**RAYCHEM CORPORATION  
300 CONSTITUTION DRIVE  
MENLO PARK, CALIFORNIA 94025

Revision : J

Date : 6/14/90

Part Number : 202C221 thru 305

Description : Adapter, Split-Type  
Convalex Tubing

CAD FILE MP90013

# X-ON Electronics

Largest Supplier of Electrical and Electronic Components

*Click to view similar products for [Cable Mounting & Accessories](#) category:*

*Click to view products by [TE Connectivity](#) manufacturer:*

Other Similar products are found below :

[582603-1](#) [009333-000](#) [727844N003](#) [747](#) [809090N001](#) [843188-000](#) [8666](#) [967279N002](#) [DB-11](#) [1300840039](#) [1300900096](#) [1301800416](#)  
[1302264450](#) [1300830184](#) [1300830729](#) [1300900039](#) [1301580036](#) [1301850553](#) [1301860939](#) [1302000074](#) [1302261315](#) [1302264431](#)  
[1337706-2](#) [APA18-AK](#) [1724](#) [1-787307-1](#) [185491N001](#) [1868](#) [HP-6N](#) [C-202-C](#) [202C221-13-0](#) [CA7308-000](#) [8S23-75FR-CS8184](#) [2684](#) [9648](#)  
[3089](#) [988382-000](#) [A72821-000](#) [AA401](#) [173506-000](#) [1823](#) [202C292-13-0](#) [202C302-13-0](#) [2109](#) [300625](#) [3330](#) [3412](#) [356247-1](#) [M9142](#)  
[M9143](#)