

**NOTES**

1. ALL DIMENSIONS ARE IN INCHES [MILLIMETERS]

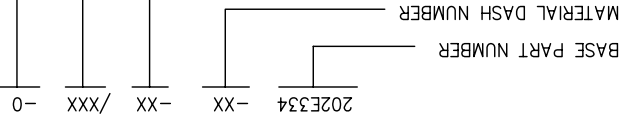
2. DIMENSIONS APPEARING IN TABLE ARE AS FOLLOWS:

a - AS SUPPLIED  
b - AFTER UNRESTRICTED RECOVERY

COATING (ADHESIVE): IS OPTIONAL  
AS SUPPLIED DIMENSIONS APPEARING IN TABLE ARE FOR UNCOATED PARTS.

DIAMETER WILL BE REDUCED BY .06 MAX. WHEN COATING IS ADDED, ENTRY

4. ORDERING INFORMATION:



**COMPATIBILITY CHART**

MATERIAL DASH NO.	ADHESIVE (COATING) SLASH NO.	ADHESIVE (COATING) S NO.
-50	N/A	N/A
-51	/86;/164;/180	S-1048; S-1124; S-1030
-71	/42;/86;/180	S-1017; S-1048; S-1030
-770	N/A	N/A
-780	N/A	N/A

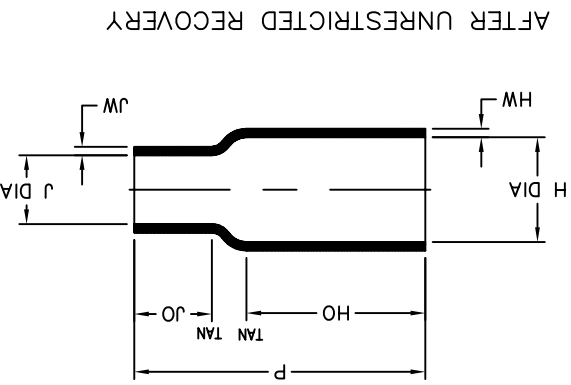
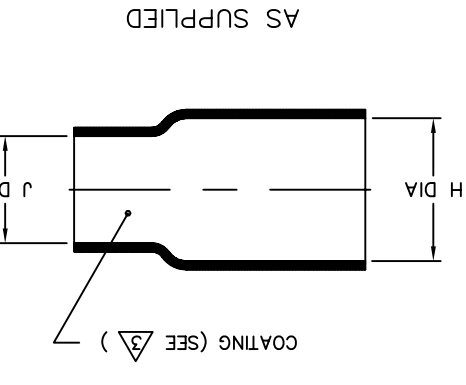


TABLE OF DIMENSIONS

PART DESCRIPTION	H		J		P	HO	JO	HW	JW								
	MIN	MAX	MIN	MAX													
202E334	.50	.42	[12.7]	[10.7]	.44	.11	[2.8]	[63.5]	[41.1]	±10%	1.62	1.62	.62	[1.52]	[1.52]	.06	[1.52]
202E336	.82	.42	[20.8]	[10.7]	.81	.21	[20.6]	[63.5]	[41.1]	±10%	1.62	1.62	.65	[1.52]	[1.52]	.06	[1.52]
202E344	.87	.74	[22.1]	[18.8]	.44	.10	[11.2]	[53.3]	[27.9]	±10%	2.10	2.10	.62	[2.29]	[2.29]	.09	[1.52]
202E346	.87	.74	[22.1]	[18.8]	.81	.31	[7.9]	[53.3]	[27.9]	±10%	2.10	2.10	.55	[14.0]	[2.29]	.09	[1.52]

AFTER UNRESTRICTED RECOVERY

AS SUPPLIED

REVISIONS	
LTR	DESCRIPTION
DATE	
T	ECO-09-016592
07/15/2009	

**CUSTOMER DRAWING**

UNLESS OTHERWISE SPECIFIED DIMENSIONS ARE IN INCHES. METRIC DIMENSIONS ARE IN BRACKETS.		APPROVED	SIZE	CODE IDENT. NO.	DWG. NO.
DRAWN		YUNGUYEN	B	06090	202E334trru346
DEPARTMENT		STRAN	TITLE		
ROYCHEM MOLDED PARTS		BOOT, STRAIGHT			
TYCO ELECTRONICS		ROYCHEM MOLDED PARTS 305 CONSTITUTION DR MENLO PARK, CA 94025			

## X-ON Electronics

Largest Supplier of Electrical and Electronic Components

*Click to view similar products for [Heat Shrink Cable Boots & End Caps](#) category:*

*Click to view products by [TE Connectivity](#) manufacturer:*

Other Similar products are found below :

[577159N001](#) [007758-000](#) [610368N003](#) [645494-000](#) [M85049/141-02HU](#) [M85049/141-03HU](#) [M85049/141-04HU](#) [687025-000](#) [705331-000](#)  
[718446-000](#) [725666N001](#) [729257-000](#) [F21914-000](#) [F27131-000](#) [F85868-000](#) [770-006A103R](#) [770-006A304W1](#) [770-006A305W1](#) [770-](#)  
[006A308W1](#) [770-011T303W1](#) [770-011T304W1](#) [770-020S702W1](#) [770-020S704W1](#) [806138-000](#) [806542N001](#) [807507-000](#) [808059-000](#)  
[808296-000](#) [808362-000](#) [808828-000](#) [809125-000](#) [809130-000](#) [809218-000](#) [811218-000](#) [811288-000](#) [812014-000](#) [812047-000](#) [813166-000](#)  
[813767N002](#) [814417-000](#) [819115N001](#) [819117N001](#) [823026-000](#) [823070-000](#) [825002-000](#) [841189N001](#) [861471-000](#) [866647-000](#) [937577-](#)  
[000](#) [950764-000](#)