

NOTES

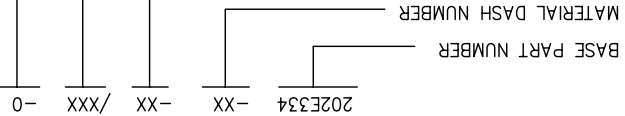
1. ALL DIMENSIONS ARE IN INCHES [MILLIMETERS]

2. DIMENSIONS APPEARING IN TABLE ARE AS FOLLOWS:
 a - AS SUPPLIED
 b - AFTER UNRESTRICTED RECOVERY

COATING (ADHESIVE): IS OPTIONAL
 AS SUPPLIED DIMENSIONS APPEARING IN TABLE ARE FOR UNCOATED PARTS.

DIAMETER WILL BE REDUCED BY .06 MAX. WHEN COATING IS ADDED, ENTRY

4. ORDERING INFORMATION:



COMPATIBILITY CHART

MATERIAL DASH NO.	ADHESIVE (COATING) SLASH NO.	ADHESIVE (COATING) S NO.
-50	N/A	N/A
-51	/86; /164; /180	S-1048; S-1124; S-1030
-71	/42; /86; /180	S-1017; S-1048; S-1030
-770	N/A	N/A
-780	N/A	N/A

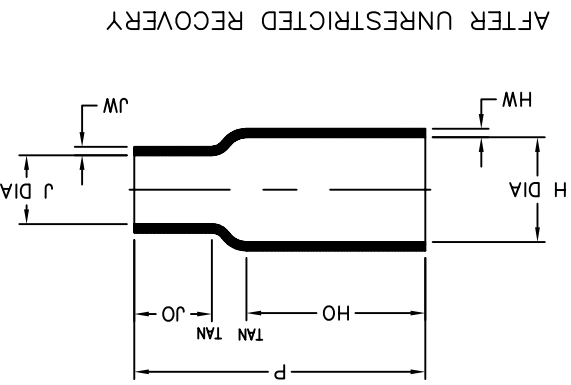
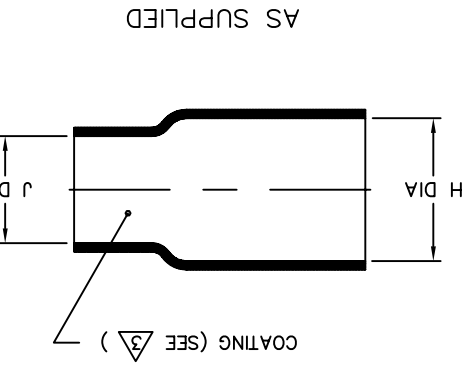


TABLE OF DIMENSIONS

PART DESCRIPTION	H		J		P	HO	HW	JO	JW
	MIN	MAX	MIN	MAX					
202E334	.50	.42	.11	.28	2.50	1.62	1.62	.62	.06
202E336	.82	.42	.81	.21	2.50	1.62	1.62	.65	.06
202E344	.87	.74	.44	.11	2.10	1.10	1.10	.62	.06
202E346	.87	.74	.81	.31	2.10	1.10	1.10	.55	.06

CUSTOMER DRAWING

UNLESS OTHERWISE SPECIFIED DIMENSIONS ARE IN INCHES. METRIC DIMENSIONS ARE IN BRACKETS.

DEGMAL TOLERANCES
 .XXX ± 0.005
 .XX ± 0.01
 .X ± 0.1
 ° ± 1 DEG.

TYCO ELECTRONICS RESERVES THE RIGHT TO CHANGE THIS DRAWING AT THE DISCRETION OF THE PRODUCT FOR THEIR APPLICATION.

THIRD ANGLE PROJECTION

APPROVED: YUNGYEN

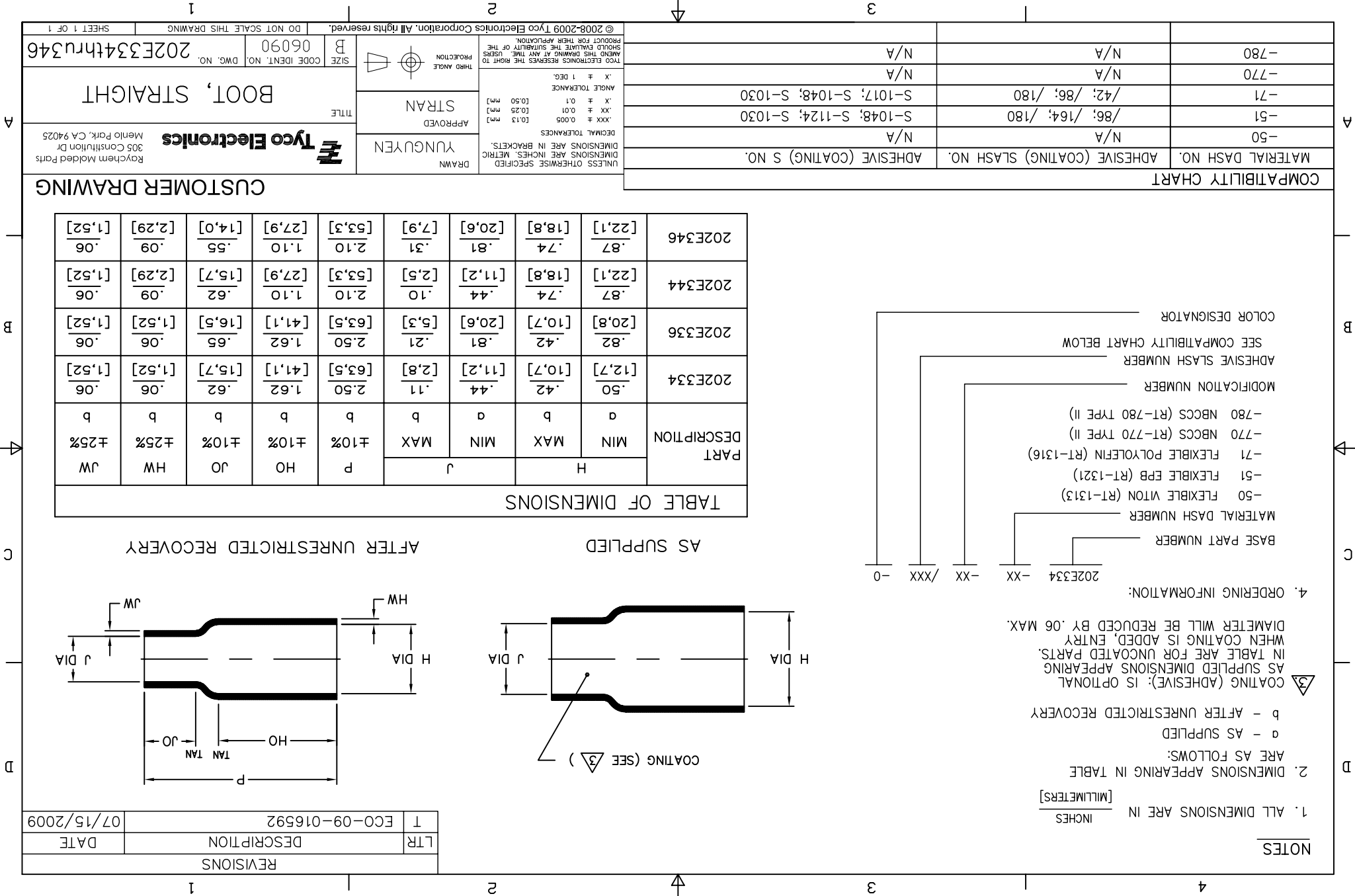
DRAWN: YUNGYEN

ROYCHEM MOLDED PARTS
 305 CONSTITUTION DR
 MENLO PARK, CA 94025

Tyco Electronics

SIZE: B
 CODE IDENT. NO.: 06090
 DWG. NO.: 202E334trru346

© 2008-2009 Tyco Electronics Corporation. All rights reserved.
 DO NOT SCALE THIS DRAWING.
 SHEET 1 OF 1



X-ON Electronics

Largest Supplier of Electrical and Electronic Components

Click to view similar products for [Heat Shrink Cable Boots & End Caps](#) category:

Click to view products by [TE Connectivity](#) manufacturer:

Other Similar products are found below :

[577159N001](#) [007758-000](#) [610368N003](#) [645494-000](#) [M85049/141-02HU](#) [M85049/141-03HU](#) [M85049/141-04HU](#) [687025-000](#) [705331-000](#)
[718446-000](#) [725666N001](#) [729257-000](#) [F21914-000](#) [F27131-000](#) [F85868-000](#) [770-006A103R](#) [770-006A304W1](#) [770-006A305W1](#) [770-](#)
[006A308W1](#) [770-011T303W1](#) [770-011T304W1](#) [770-020S702W1](#) [770-020S704W1](#) [806138-000](#) [806542N001](#) [807507-000](#) [808059-000](#)
[808296-000](#) [808362-000](#) [808828-000](#) [809125-000](#) [809130-000](#) [809218-000](#) [811218-000](#) [811288-000](#) [812014-000](#) [812047-000](#) [813166-000](#)
[813767N002](#) [814417-000](#) [819115N001](#) [819117N001](#) [823026-000](#) [823070-000](#) [825002-000](#) [841189N001](#) [861471-000](#) [866647-000](#) [937577-](#)
[000](#) [950764-000](#)