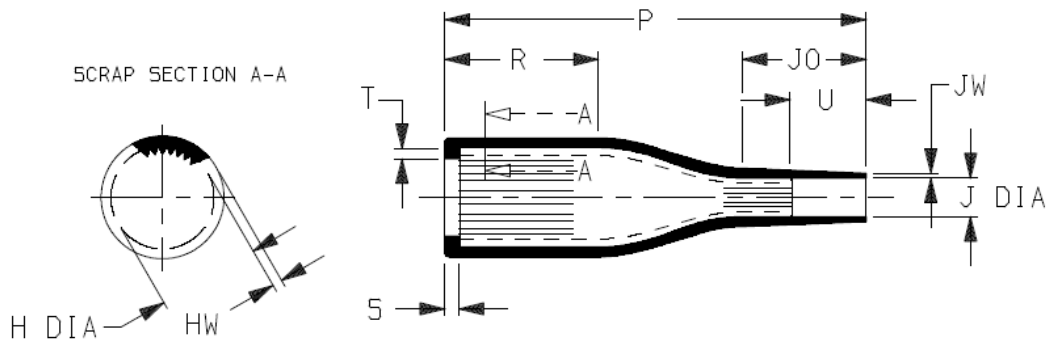


a) Part as supplied.

202S1\*\*-\*-UP



b) Part after unrestricted recovery.



DIMENSIONS in millimetres  
(in inches, for reference)

Part No.	H		J		P ±10%	R REF	S REF	T REF	U ±20%	JO REF	HW ±20%	JW ±20%
	Min a	Max b	Min a	Max b								
202S121	16 (0.63)	10.4 (0.41)	16 (0.63)	5.0 (0.20)	45 (1.77)	17 (0.67)	3.0 (0.12)	1.0 (0.04)	10 (0.39)	15 (0.59)	2.0 (0.08)	1.0 (0.04)
202S132	18 (0.71)	14.2 (0.56)	18 (0.71)	6.0 (0.24)	60 (2.36)	28 (1.10)	3.0 (0.12)	1.0 (0.04)	10 (0.39)	17 (0.67)	2.0 (0.08)	1.0 (0.04)
202S142	24 (0.94)	18.0 (0.71)	24 (0.94)	7.2 (0.28)	72 (2.83)	32 (1.26)	3.0 (0.12)	1.0 (0.04)	10 (0.39)	20 (0.79)	2.0 (0.08)	1.0 (0.04)
202S152	28 (1.10)	22.4 (0.88)	28 (1.10)	8.5 (0.33)	85 (3.35)	31 (1.22)	3.0 (0.12)	1.0 (0.04)	15 (0.59)	25 (0.98)	2.0 (0.08)	1.0 (0.04)
202S163	35 (1.38)	28.2 (1.11)	35 (1.38)	10.0 (0.39)	110 (4.33)	50 (1.97)	3.0 (0.12)	1.7 (0.07)	20 (0.79)	30 (1.18)	2.2 (0.09)	1.2 (0.05)
202S174	43 (1.69)	35.1 (1.38)	43 (1.69)	15.8 (0.62)	135 (5.31)	70 (2.76)	3.0 (0.12)	1.7 (0.07)	20 (0.79)	30 (1.18)	3.0 (0.12)	1.5 (0.06)

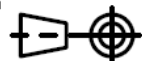
This variant is unplated and has internal gravures.

**Copyright (!)**

The copyright in this drawing is the property of Tyco Electronics UK Ltd. The drawing is issued on the condition that it is not copied, reproduced or disclosed to a third party, either in whole or in part without the prior written consent of Tyco Electronics UK Ltd.

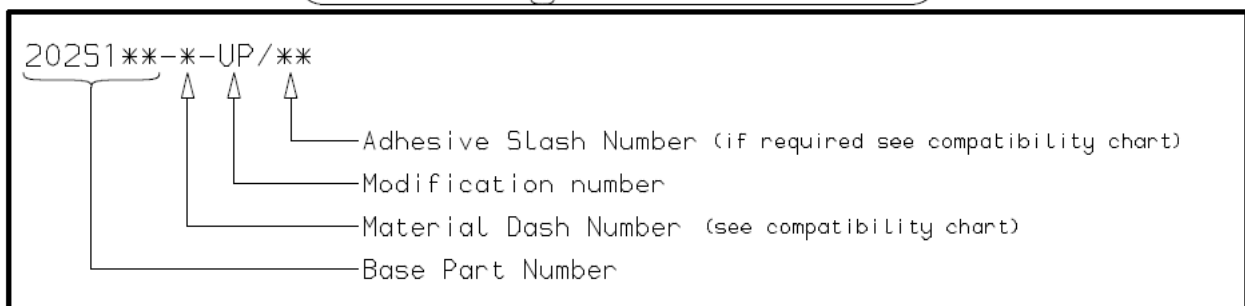
Drawn D.LADD      Checked      Issue 3      Date APRIL 2011  
Approval      Design      MKTG.      Tech.

Conforms to ISO Recommendations  
3rd Angle Projection  
Not to Scale



<b>Raychem</b>		<b>Specification Control Drawing</b>	Part Number <b>202S1**-*-UP Issue 3</b>
Iss.	Date	E.C.R. No.	Details of Change
2 3	March 2008 April 2011	CR06-HM-012 *	Imperial dimensions added -100 added to compatibility chart

### (Ordering Information)



### (COMPATIBILITY CHART)

Material Dash Number	Material Description	SPEC Number	Coating Slash Number
-3	POLYOLEFIN, SEMI-RIGID	RT-301	/42, /86, /180
-4	POLYOLEFIN, FLEXIBLE	RT-1304	/42, /86, /180
-25	ELASTOMER, FLUID RESISTANT	RW-2070	/42, /86, /225
-100	ZEROHAL	RW-2058	/86, /180
-130	POLYOLEFIN, COMMERCIAL FLEXIBLE	RW-2008	/42

#### NOTES

- ① As supplied dimensions are for uncoated parts, when coating is added entry diameters will reduce by 1.5mm Max.

Tyco Electronics UK Ltd. Faraday Road, Swindon, Wiltshire, SN3 5HH England Telephone: (01793) 528171 Fax: 572516	Tyco Electronics Corporation 300, Constitution Drive, Menlo Park, CA 94025 USA Telephone (650) 361-3860 Fax: (650) 361-5579
Cage Code K1010	Cage Code 06090

## X-ON Electronics

Largest Supplier of Electrical and Electronic Components

*Click to view similar products for te connectivity manufacturer:*

Other Similar products are found below :

[570416-000](#) [CLTEQ-M81CE-SSRELAY-4-20V](#) [4-1633138-8](#) [D38999/24FJ4AN](#) [4-1195131-0](#) [650069-000](#) [SMD100-2](#) [2EDL4CM](#)  
[DTS20W19-11PD-3028](#) [DTS20W19-11PD-3028-LC](#) [DTS20W19-32SD-3028-LC](#) [DTS20W19-32SD-3028](#) [NC6-P104-06](#) [TXR64AB90-](#)  
[3616AI](#) [DTS26F21-41HE](#) [DTS26F21-41AE](#) [DTS26F21-41PE-LC](#) [DTS26F21-11SE-3028-LC](#) [D38999/24WF32JE](#) [D38999/24WF32SE-LC](#)  
[DTS24W19-32HE](#) [D38999/20JB35HA](#) [D38999/24WJ20PA](#) [164-8033-08](#) [D38999/24FF32JE](#) [D38999/24FF32SE-LC](#) [D38999/24WF32JB](#)  
[D38999/24WG11HA](#) [D38999/24WG11HN](#) [MS27467T21F11H](#) [DJT16E21-11HA](#) [DTS24F19-32HE](#) [DTS20W19-32SA-3028-LC](#) [DTS24F19-](#)  
[11SC-3028-LC](#) [DTS24F19-11SC-3028](#) [DJT14E13-98HB](#) [D38999/20WC8BB](#) [1-330599-5](#) [DTS24F21-41HN-LC](#) [DTS24F21-41HN](#)  
[DTS24F21-41AN](#) [DTS24F21-39HN](#) [DTS24F21-41PN-LC](#) [AFD50-10-6SN-1A-LC](#) [DJT10F17-26HC](#) [DTS24W19-32HB](#) [ACT20JE99HA](#)  
[DJT10E17-26HC](#) [DJT10E17-26HN](#) [DJT10F17-26HA](#)