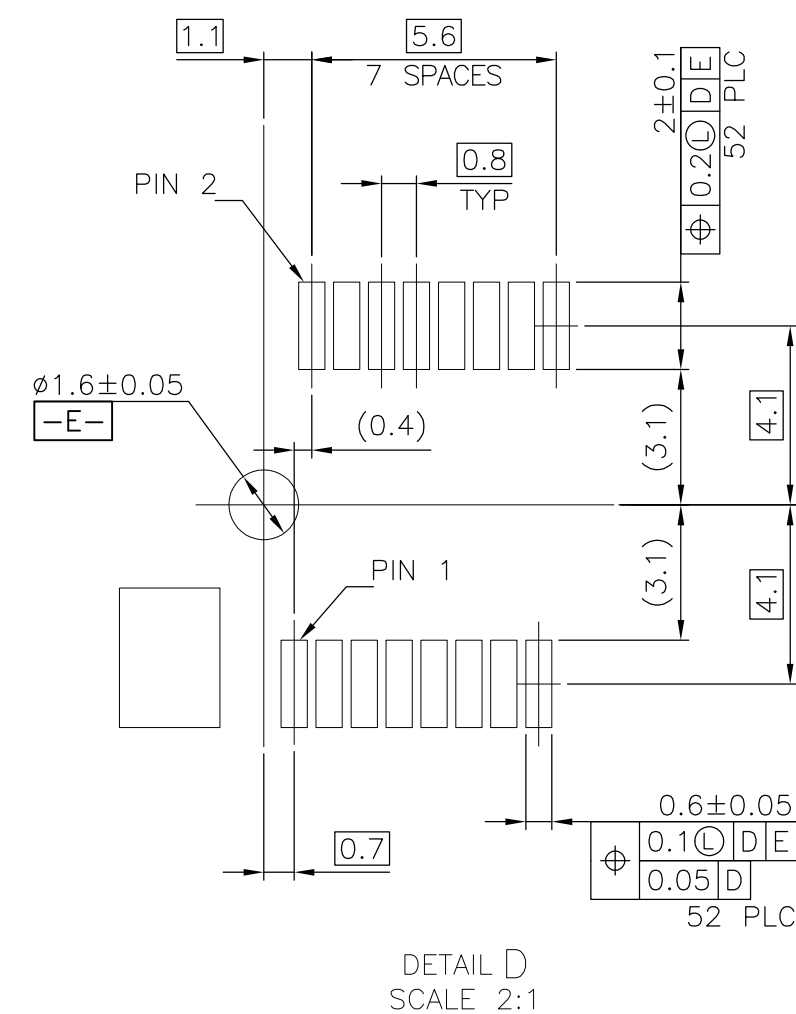




[-D-] IS THE TOP SURFACE OF PCB.

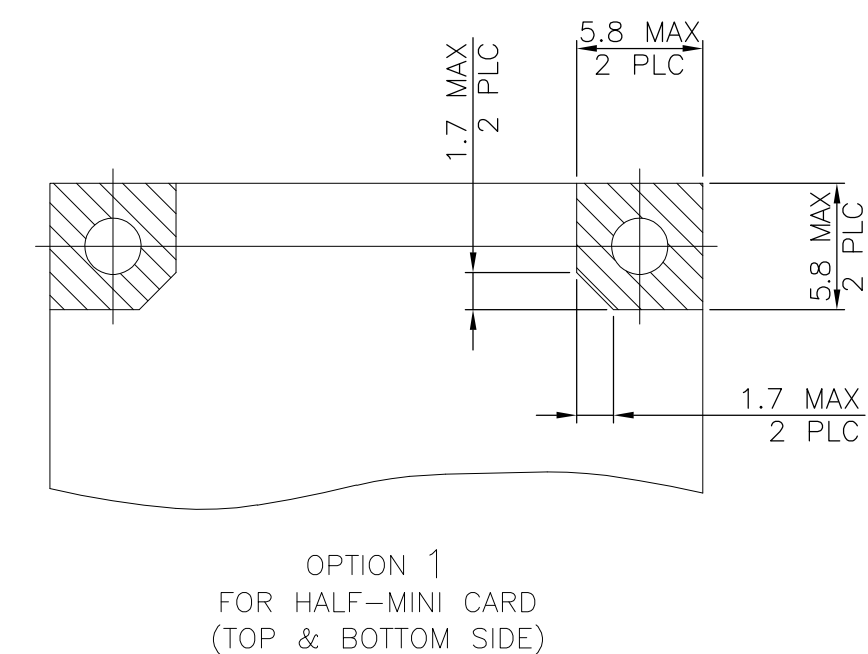
RECOMMENDED P.C. BOARD PATTERN LAYOUT
FOR FULL CARD CONNECTOR
(TOP VIEW)



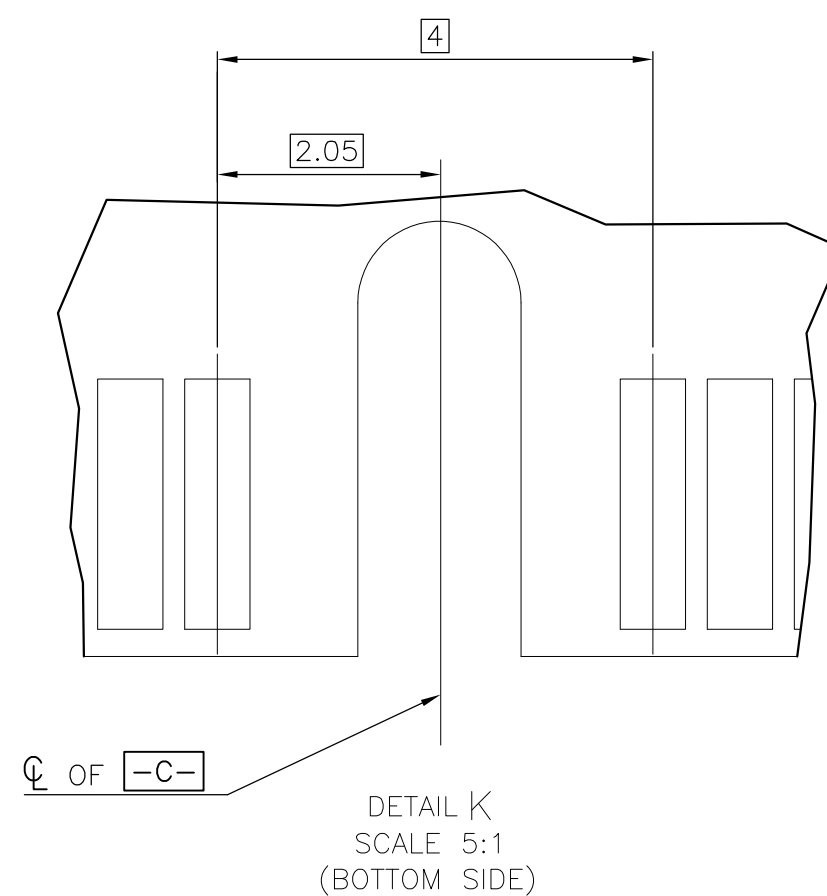
—D— IS THE TOP SURFACE OF PCB.

RECOMMENDED P.C. BOARD PATTERN LAYOUT
FOR HALF CARD CONNECTOR
(TOP VIEW)



THIS DRAWING IS A CONTROLLED DOCUMENT.		DWN — CHK — APVD —		01JUN2016		 TE Connectivity	
DIMENSIONS: mm		TOLERANCES, UNLESS OTHERWISE SPECIFIED:		NAME 2 IN 1 mSATA & PCI EXPRESS MINI CARD CONNECTOR, 4 MM HEIGHT			
		0 PLC ± — 1 PLC ± — 2 PLC ± — 3 PLC ± — 4 PLC ± — ANGLES ± ± —					
MATERIAL —		FINISH —					
		WEIGHT —		SIZE A2		CAGE CODE 00779	
				DRAWING NO C-2041119		RESTRICTED TO —	
CUSTOMER DRAWING				SCALE —		SHEET 2 OF 5	
						REV D	



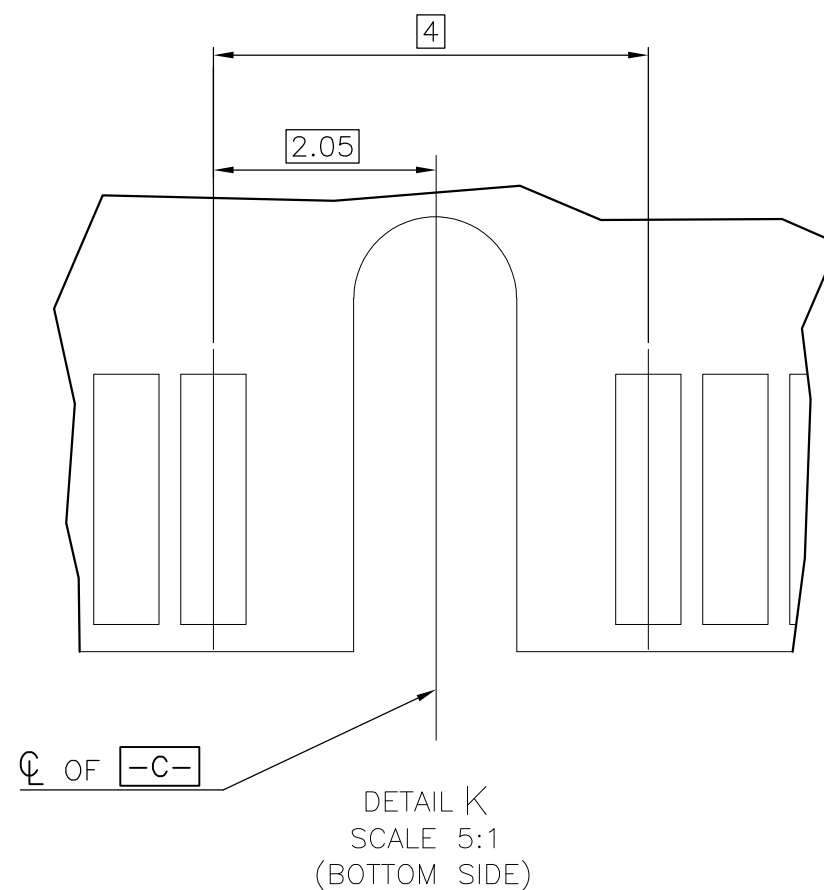
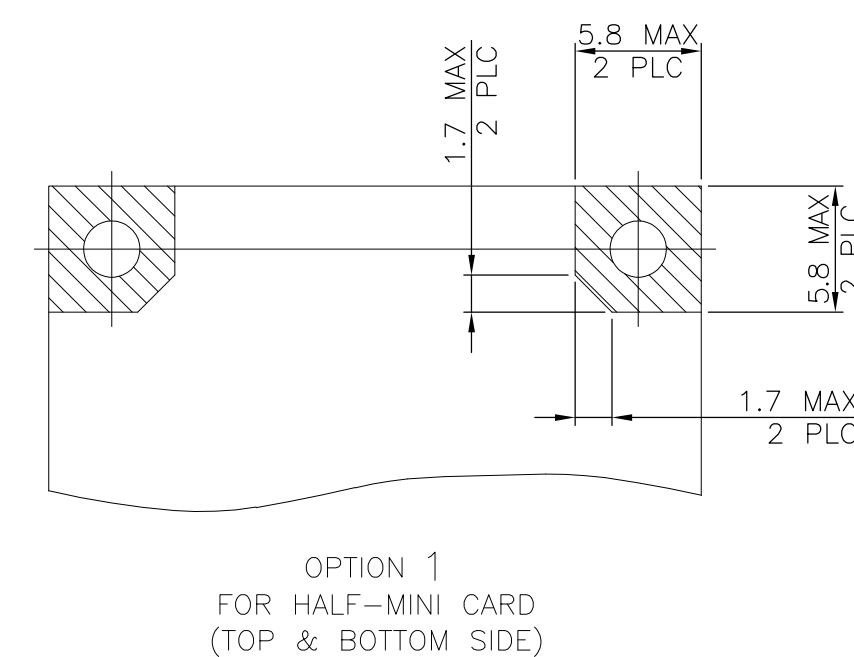
DETAIL L
SCALE 5:1




△ EDGE BEVEL MUST BE PRESENT AND FREE OF CUTTING BURRS FROM PCB AND CONTACT MATERIALS.


THIS DRAWING IS A CONTROLLED DOCUMENT.		DWN — 01JUN2016		 TE Connectivity			
		CHK —					
DIMENSIONS: mm		TOLERANCES UNLESS OTHERWISE SPECIFIED:		NAME 2 IN 1 mSATA & PCI EXPRESS MINI CARD CONNECTOR, 4 MM HEIGHT			
		APVD —					
0 PLC ± — 1 PLC ± — 2 PLC ± — 3 PLC ± — 4 PLC ± — ANGLES ± ± —		PRODUCT SPEC —					
MATERIAL —		APPLICATION SPEC —					
FINISH —		WEIGHT —		SIZE A2	CAGE CODE 00779	DRAWING NO C-2041119	RESTRICTED TO —
CUSTOMER DRAWING				SCALE —	SHEET 3 OF 5	REV D	

REVISIONS					
P	LTR	DESCRIPTION	DATE	DWN	APVD
	—	SEE SHEET 1	—	—	—






NOTES:

 CARD THICKNESS APPLIES ACROSS TABS AND INCLUDES PLATING AND/OR METALLIZATION.

 EDGE BEVEL MUST BE PRESENT AND FREE OF CUTTING BURRS FROM PCB AND CONTACT MATERIALS.

FOR PCI EXPRESS MINI CARD

THIS DRAWING IS A CONTROLLED DOCUMENT.		DWN	01JUN2016		 TE Connectivity		
		CHK	—				
DIMENSIONS:		TOLERANCES UNLESS OTHERWISE SPECIFIED:		2 IN 1 mSATA & PCI EXPRESS MINI CARD CONNECTOR, 4 MM HEIGHT			
mm							
		0 PLC ± —					
		1 PLC ± —					
		2 PLC ± —					
		3 PLC ± —					
4 PLC ± —		APVD		NAME			
ANGLES		± —		PRODUCT SPEC			
				—			
MATERIAL		FINISH		APPLICATION SPEC			
—		—		—			
		WEIGHT		SIZE	CAGE CODE	DRAWING NO	RESTRICTED TO
		—		A2	00779	 2041119	—
CUSTOMER DRAWING						SCALE	SHEET
						—	4 of 5
						REV	D

REVISIONS					
P	LTR	DESCRIPTION	DATE	DWN	APVD
-	-	SEE SHEET 1	-	-	-

D

C

B

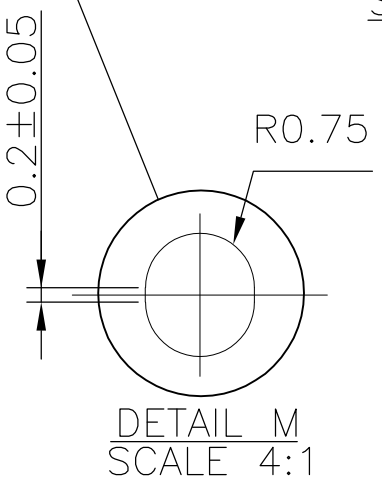
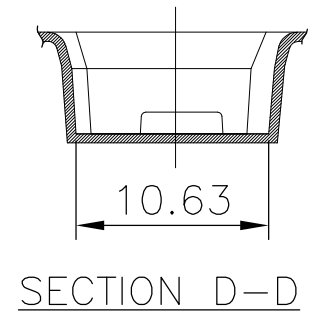
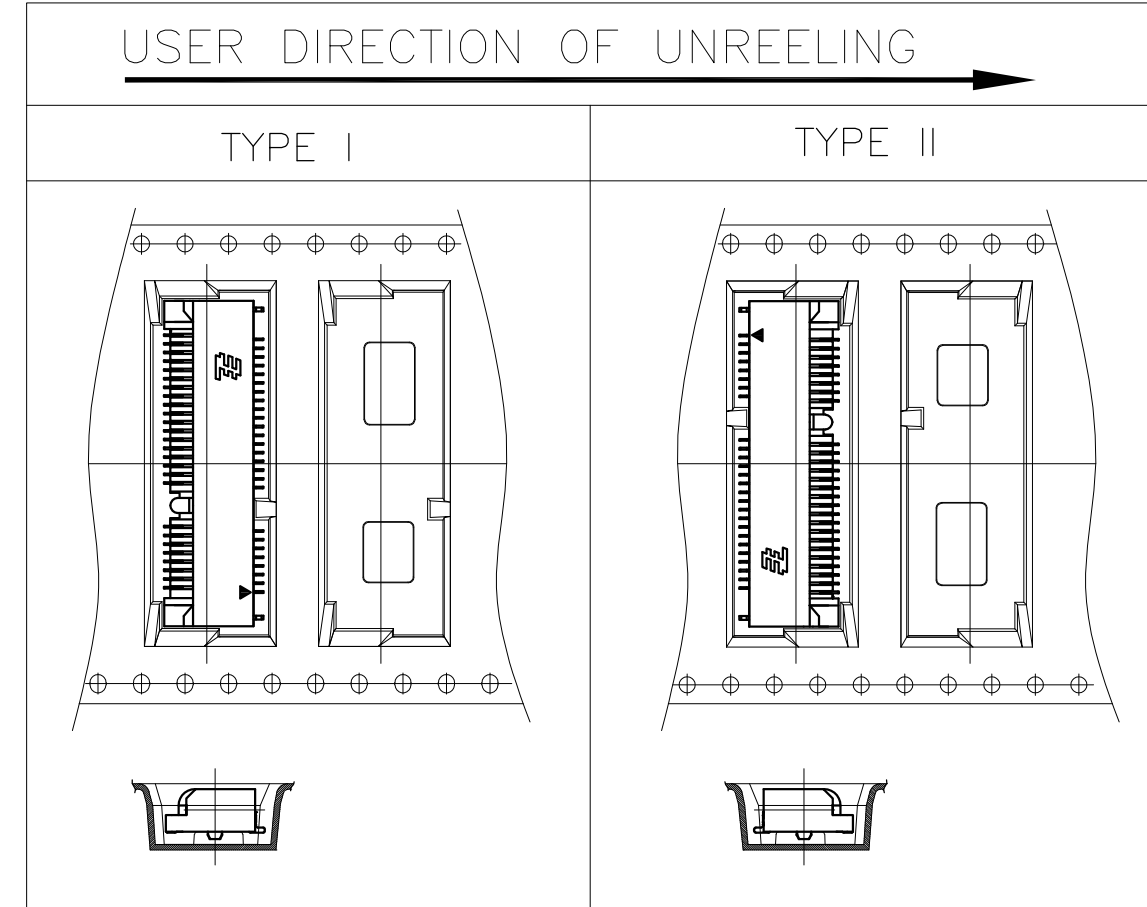
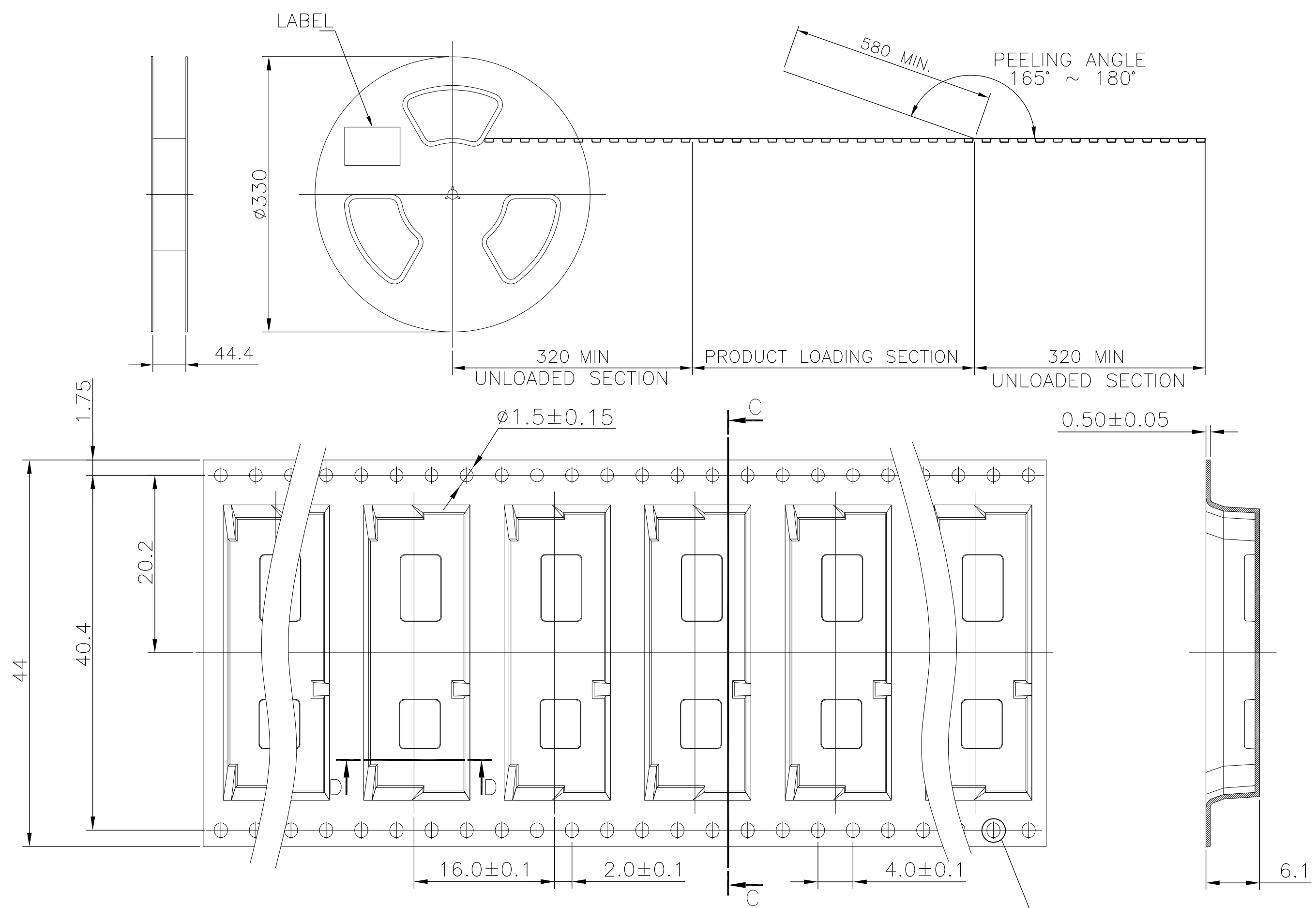
A

D

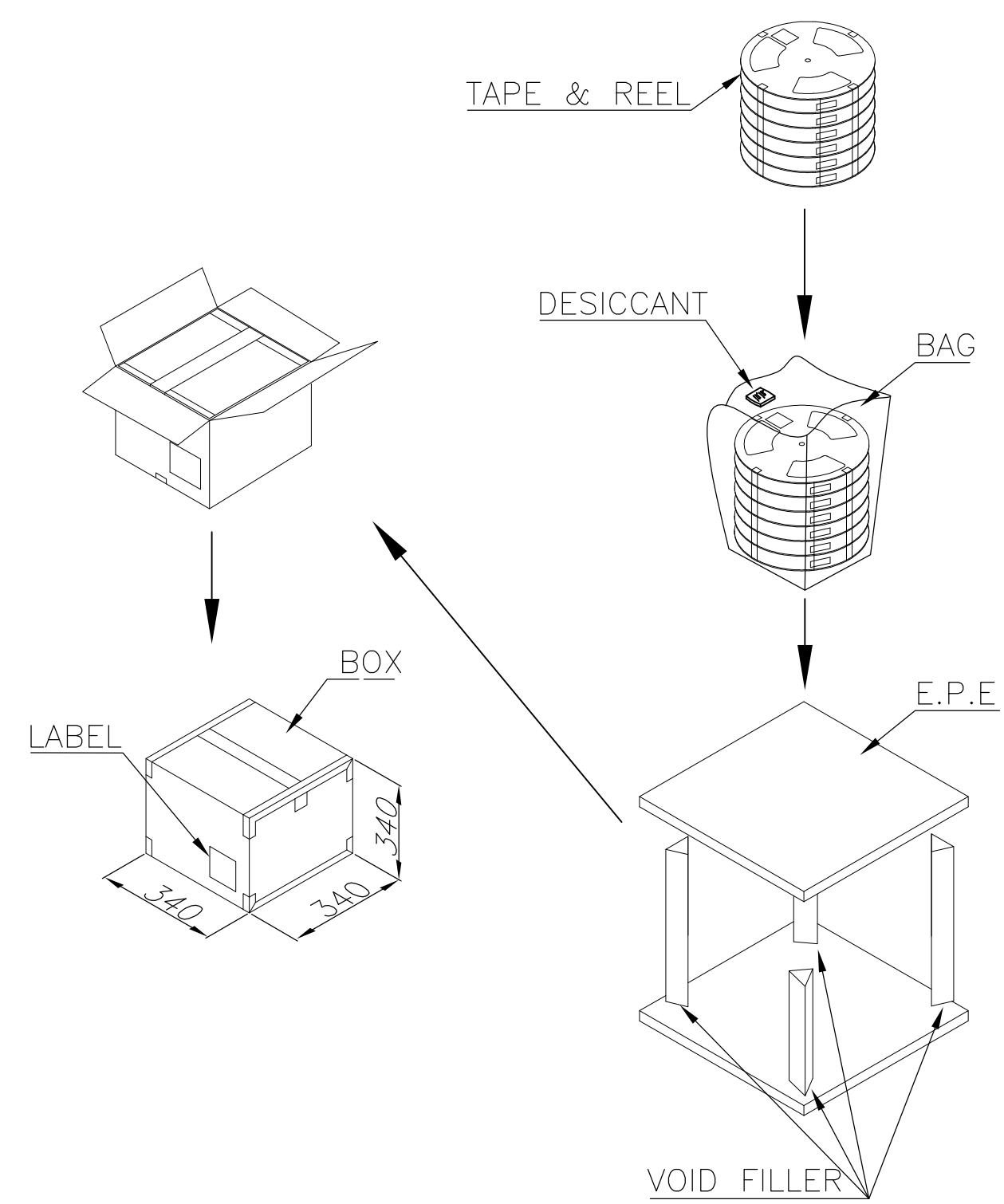
C

B

A



- NOTES:
1. MATERIAL:
BOX: FIBREBOARD, CORRUGATED, DOUBLE WALL.
COVER TAPE: POLYSTYRENES, TRANSPARENT COLOR.
CARRIER TAPE: POLYSTYRENES, TRANSPARENT COLOR.
REEL: HIPS, BLUE COLOR.
BAG: POLYETHYLENES, TRANSPARENT COLOR.
 2. EACH BAG SHALL BE INCLUDED DESICCANT.
 3. PEELING STRENGTH: 0.1 ~ 1.3 N (10 ~ 130 GRAMS).
 4. PEELING SPEED: 300 mm/min.



3900 PCS	650	6	9.50	4.618
QUANTITY	PCS/TAPE	REELS/BOX	G/W(Kg)	N/W(Kg)

THIS DRAWING IS A CONTROLLED DOCUMENT.		DWN	01JUN2016	TE Connectivity	
		CHK	-		
DIMENSIONS:		APVD	-	NAME	
mm		PRODUCT SPEC	-		
		APPLICATION SPEC	-	2 IN 1 mSATA & PCI EXPRESS MINI CARD CONNECTOR, 4 MM HEIGHT	
		WEIGHT	-		
MATERIAL		FINISH	-	SIZE	RESTRICTED TO
				A2	-
				CAGE CODE	
				DRAWING NO	
				C=2041119	
				SCALE	REV
				-	D
				SHEET	
				5 of 5	

X-ON Electronics

Largest Supplier of Electrical and Electronic Components

Click to view similar products for [PCI Express/PCI Connectors](#) category:

Click to view products by [TE Connectivity](#) manufacturer:

Other Similar products are found below :

[UEX220-6U](#) [10039755-10110TLF](#) [1-1871239-2](#) [2170560-2](#) [10125756-980000LF](#) [EB220-3U](#) [10061913-120PLF](#) [GPCP146400111HR](#)
[GPCP442628110HR](#) [GPCP446200120HR](#) [GPCP245400111HR](#) [10082378-10000TLF](#) [87715-9256](#) [MDT580M03001](#) [0877159107](#)
[MDT580M01001](#) [10018783-11000MLF](#) [10018783-11101TLF](#) [10108777-10000ALF](#) [10141523-111T0LF](#) [10145445-10003MLF](#)
[PSASF2130311TR](#) [PSASF3130411TR](#) [7-1734774-7](#) [3-1761465-1](#) [10018784-10111TLF](#) [10039755-10111TLF](#) [10039755-10112TLF](#)
[10018783-10211TLF](#) [10018784-10211TLF](#) [10018784-10212TLF](#) [1761465-2](#) [1871058-1](#) [5-1761465-4](#) [10018783-10200MLF](#) [10018783-](#)
[10213TLF](#) [10018784-10210TLF](#) [10018784-11113TLF](#) [10025026-10001TLF](#) [5145154-8](#) [1871058-4](#) [2041119-2](#) [10018783-10212TLF](#)
[10018784-10102TLF](#) [10018783-11200TLF](#) [SM3ZS067U215-NUT1-R2500](#) [10123371-001TRLF](#) [10018784-10110TLF](#) [6-1734774-7](#) [6-](#)
[1734774-9](#)