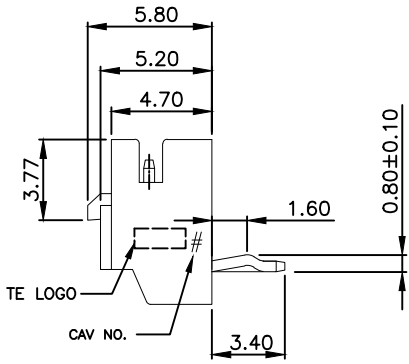
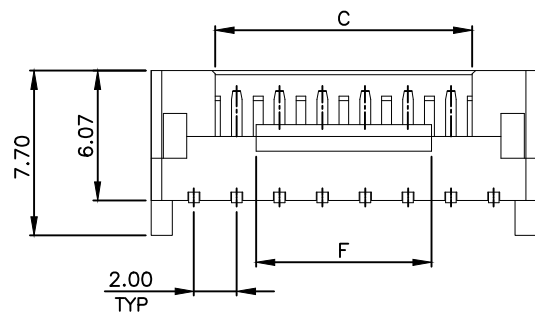
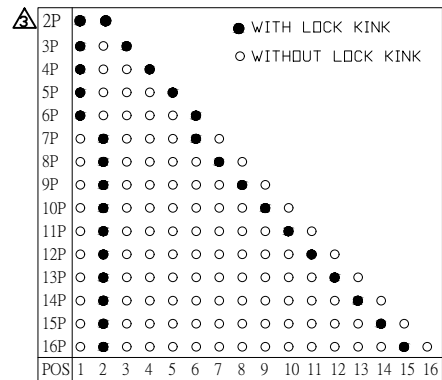
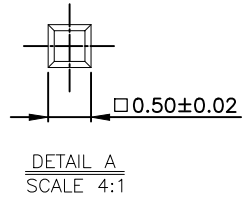
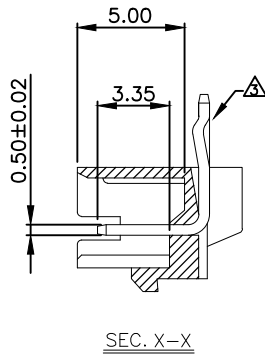
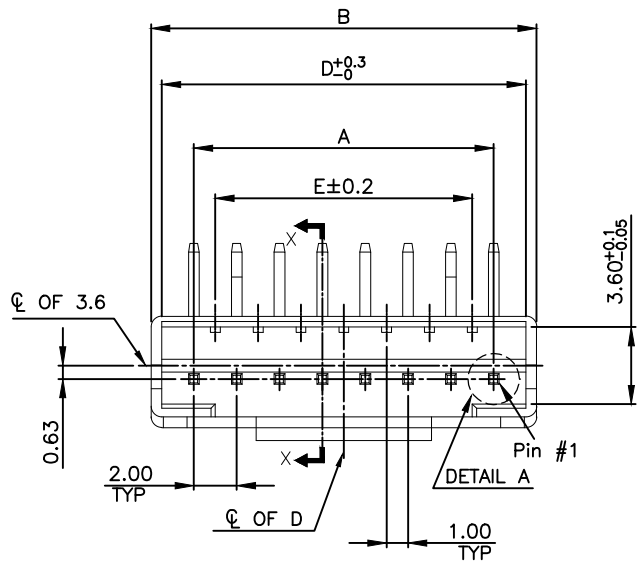


THIS DRAWING IS UNPUBLISHED. RELEASED FOR PUBLICATION  
 © COPYRIGHT - BY - ALL RIGHTS RESERVED.

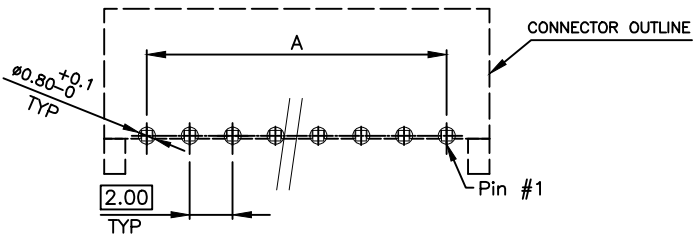
LOC		DIST		REVISIONS			
P	LTR	DESCRIPTION		DATE	DWN	APVD	
	A3	ECR-20-004159		07MAY2020	T.Q	W.H	

NOTE:

- MATERIAL:  
HSG: NYLON 66, UL 94V-0. COLOR:NATURAL  
CONTACTS: BRONZE.
- FINISH:  
CONTACTS: 2.032μm [80μ"] MIN. BRIGHT-TIN ON OVER ALL  
0.762μm [30μ"] MIN. NICKEL UNDERPLATED
- CONTACT SOLDER TAIL KINK DIRECTION (BOARD LOCK) SEE TABLE
- NON ACCUMULATIVE TOLERANCE
- WAVE SOLDER SPECIFICATION REFER TO 108-57788.



OBSOLETE	-0.835	8.2	28.0	33.0	28.0±0.2	34.0	30.0	16P	1-2041145-6
OBSOLETE	-0.785	8.2	26.0	31.0	26.0±0.2	32.0	28.0	15P	1-2041145-5
	0.735	8.2	24.0	29.0	24.0±0.2	30.0	26.0	14P	1-2041145-4
OBSOLETE	-0.685	8.2	22.0	27.0	22.0±0.2	28.0	24.0	13P	1-2041145-3
	0.635	8.2	20.0	25.0	20.0±0.2	26.0	22.0	12P	1-2041145-2
OBSOLETE	-0.585	8.2	18.0	23.0	18.0±0.2	24.0	20.0	11P	1-2041145-1
OBSOLETE	-0.54	8.2	16.0	21.0	16.0±0.2	22.0	18.0	10P	1-2041145-0
	0.49	8.2	14.0	19.0	14.0±0.2	20.0	16.0	9P	2041145-9
	0.44	8.2	12.0	17.0	12.0±0.2	18.0	14.0	8P	2041145-8
OBSOLETE	-0.40	8.2	10.0	15.0	10.0±0.2	16.0	12.0	7P	2041145-7
OBSOLETE	-0.37	4.0	8.0	13.0	8.0±0.2	14.0	10.0	6P	2041145-6
OBSOLETE	-0.32	4.0	6.0	11.0	6.0±0.2	12.0	8.0	5P	2041145-5
	0.26	4.0	4.0	9.0	4.0±0.2	10.0	6.0	4P	2041145-4
	0.20	2.0	2.0	7.0	2.0 <sup>+0.08</sup> <sub>-0.08</sub>	8.0	4.0	3P	2041145-3
OBSOLETE	-0.14	2.0	/	5.0	2.0	6.0	2.0	2P	2041145-2
	WEIGHT (g)	F	E	D	C	B	A	POS	P/N



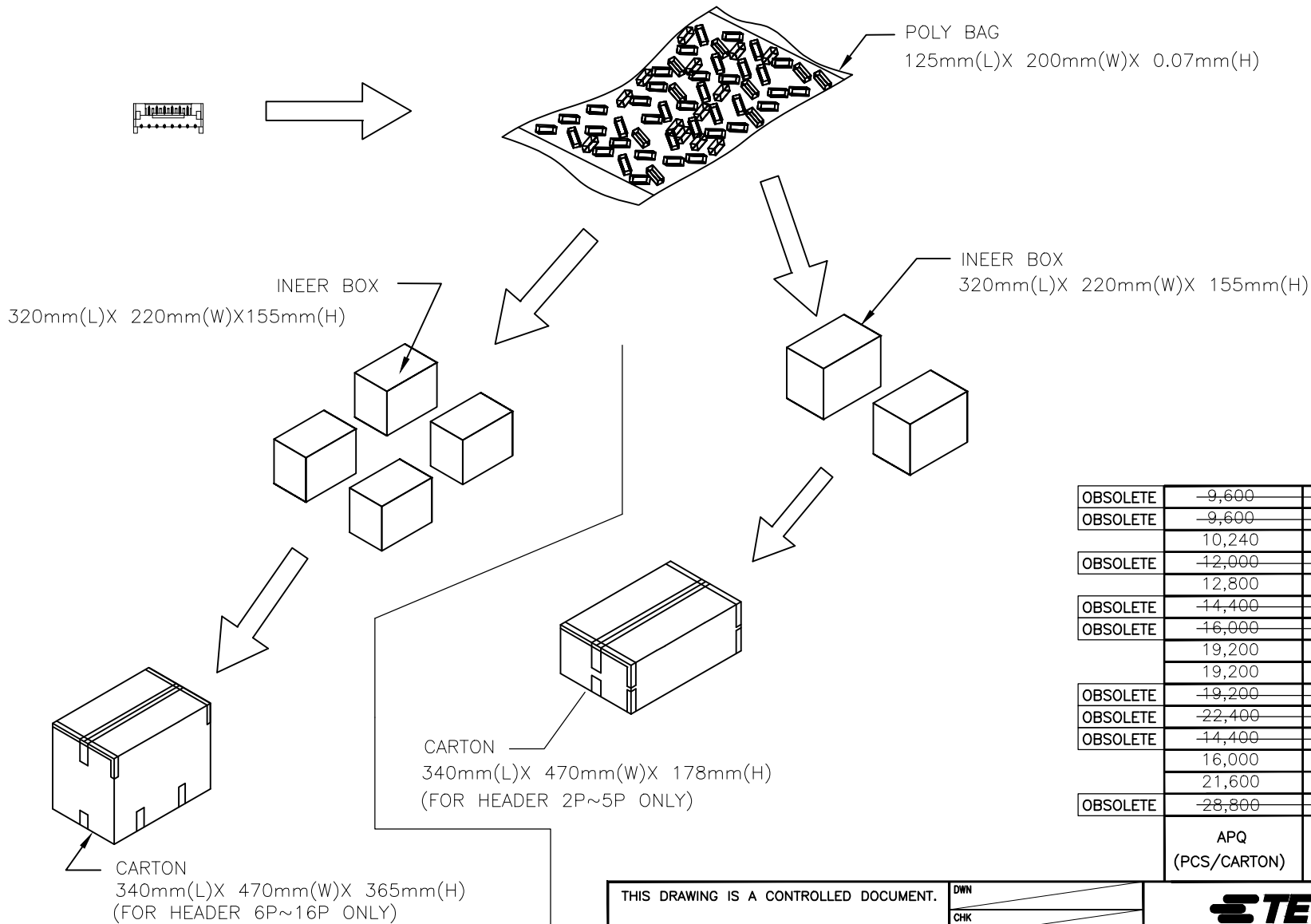
THIS DRAWING IS A CONTROLLED DOCUMENT.

DIMENSIONS: MM	TOLERANCES UNLESS OTHERWISE SPECIFIED:
0 PLC	± -
1 PLC	± 0.3
2 PLC	± 0.2
3 PLC	± 0.15
4 PLC	± 0.1
ANGLES	± 3'

DWN J. LAI	300CT2009	<b>TE</b> TE Connectivity			
CHK S. CHIEN	300CT2009				
APVD W. KODAMA	300CT2009	NAME			
PRODUCT SPEC	108-57788	HPI 2.0mm HEADER CONNECTOR, R/A, DIP TYPE			
APPLICATION SPEC		SIZE	CAGE CODE	DRAWING NO	RESTRICTED TO
WEIGHT	SEE TABLE	A3	00779	C-2041145	-
CUSTOMER DRAWING		SCALE	SHEET	1 of 2	REV A3

THIS DRAWING IS UNPUBLISHED. RELEASED FOR PUBLICATION  
 © COPYRIGHT - BY - ALL RIGHTS RESERVED.

LOC	DIST	REVISIONS					
DW		P	LTR	DESCRIPTION	DATE	DWN	APVD
				SEE SHEET 1.			



	APQ (PCS/CARTON)	PPQ (PCS/BAG)	CIRCUITS	PART NUMBER
<del>OBSOLETE</del>	<del>9,600</del>	<del>160</del>	<del>16P</del>	<del>1-2041145-6</del>
<del>OBSOLETE</del>	<del>9,600</del>	<del>160</del>	<del>15P</del>	<del>1-2041145-5</del>
<del>OBSOLETE</del>	<del>10,240</del>	<del>160</del>	<del>14P</del>	<del>1-2041145-4</del>
<del>OBSOLETE</del>	<del>12,000</del>	<del>200</del>	<del>13P</del>	<del>1-2041145-3</del>
<del>OBSOLETE</del>	<del>12,800</del>	<del>200</del>	<del>12P</del>	<del>1-2041145-2</del>
<del>OBSOLETE</del>	<del>14,400</del>	<del>200</del>	<del>11P</del>	<del>1-2041145-1</del>
<del>OBSOLETE</del>	<del>16,000</del>	<del>250</del>	<del>10P</del>	<del>1-2041145-0</del>
	19,200	300	9P	2041145-9
	19,200	300	8P	2041145-8
<del>OBSOLETE</del>	<del>19,200</del>	<del>300</del>	<del>7P</del>	<del>2041145-7</del>
<del>OBSOLETE</del>	<del>22,400</del>	<del>350</del>	<del>6P</del>	<del>2041145-6</del>
<del>OBSOLETE</del>	<del>14,400</del>	<del>450</del>	<del>5P</del>	<del>2041145-5</del>
	16,000	500	4P	2041145-4
	21,600	600	3P	2041145-3
<del>OBSOLETE</del>	<del>28,800</del>	<del>800</del>	<del>2P</del>	<del>2041145-2</del>

**THIS DRAWING IS A CONTROLLED DOCUMENT.**

DIMENSIONS: MM	TOLERANCES UNLESS OTHERWISE SPECIFIED:	DWN	TE Connectivity NAME HPI 2.0mm HEADER CONNECTOR, R/A, DIP TYPE
	0 PLC ± -	CHK	
	1 PLC ± -	APVD	
	2 PLC ± -	PRODUCT SPEC	
	3 PLC ± -	APPLICATION SPEC	SIZE
	4 PLC ± -	WEIGHT	CAGE CODE
MATERIAL	FINISH	CUSTOMER DRAWING	DRAWING NO
			RESTRICTED TO

A3 00779 ©=2041145  
 SCALE - SHEET 2 OF 2 REV A3

## X-ON Electronics

Largest Supplier of Electrical and Electronic Components

*Click to view similar products for [Headers & Wire Housings](#) category:*

*Click to view products by [TE Connectivity](#) manufacturer:*

Other Similar products are found below :

[892-18-020-10-001101](#) [58102-G61-06LF](#) [582553-1](#) [0009485154](#) [009176003701906](#) [0050291907](#) [LY20-4P-DT1-P1E-BR](#) [02.125.8002.8](#)  
[609-3404](#) [61062-3](#) [61082-181009](#) [622-3653LF](#) [63453-116](#) [636-1030](#) [636-1427](#) [636-3427](#) [636-4007](#) [641938-9](#) [641991-4](#) [644827-2](#) [65817-](#)  
[010LF](#) [65817-015LF](#) [65863-015LF](#) [66207-023LF](#) [67095-007LF](#) [67601157](#) [68645-018](#) [68648-049](#) [70.362.1628.0](#) [70-4210](#) [70-4226B](#) [70-](#)  
[4853B](#) [707-5020](#) [707-5028](#) [71.350.2428.0](#) [71918-208LF](#) [71961-016LF](#) [733-134](#) [733-162](#) [754199-000](#) [760-3052](#) [787-8014-00](#) [79531-3000](#)  
[FCN-360C032-B](#) [FCN-367T-T012/H](#) [FCN-723D010/2](#) [80.063.4001.1](#) [800-90-001-10-001000](#) [800-90-010-10-002000](#) [801-43-002-10-013000](#)