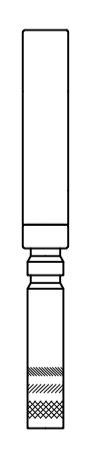
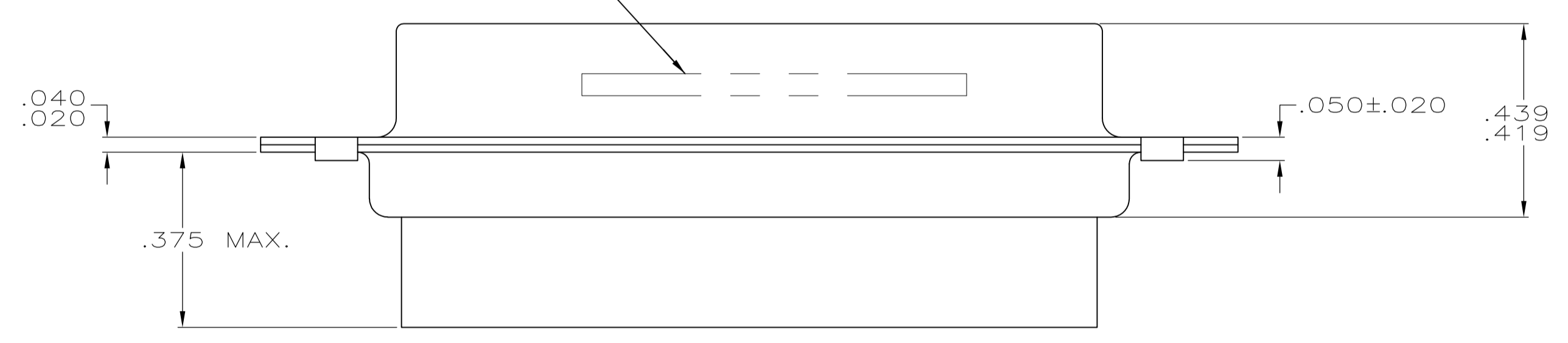
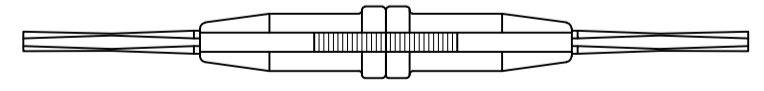


1. THIS RCPT. IS DESIGNED TO CONFORM TO THE LATEST ISSUE OF MIL-C-24308. EXCEPT AS NOTED HEREIN.
 2. MAX WIRE INSUL TO BE USED WITH THIS RCPT IS .054 DIA
 3. METAL RETENTION CLIPS ARE INCLUDED IN INSERTS
 4. THIS RCPT. WILL ACCEPT SIZE 22 SOCKET CONTACT M 39029/57-354 OR ANY AMP HDD-22 SOCKET CONTACT
- ⚠ 5 UL & CSA DESIGNATION STAMPED ON SHELL, OPTIONAL
 - ⚠ 6 DIALYL PHTHALATE PER MIL-M-14, TYPE SDG-F
COLOR: BLUE
OR POLYPHENYLENE SULFIDE(PPS)
PER MIL-M24519, TYPE GST-40F
COLOR: BLACK
 - ⚠ 7 STEEL PER ASTM-A-109 OR EQUIVALENT.
 - ⚠ 8 CADMIUM PER QQ-P-416, TYPE II, CLASS 2
OVER COPPER PER MIL-C-14550, CLASS 4.

MILITARY PART NUMBER MARKED (NEAR SIDE)
MFG'S NAME, BRAND OR LOGO, MFG'S PART NUMBER
AND DATE CODE MARKED (FAR SIDE)



SOCKET CONTACT
PART NO 204351-1
QTY 44
SUPPLIED WITH CONNECTOR
BUT NOT INSTALLED



INSERTION/EXTRACTION TOOL
PART NO 91067-1
SUPPLIED WITH CONNECTOR
(-3 ONLY)

⚠ 5	⚠ 6	⚠ 7	⚠ 8	M24308/2-19F	M24308/2-19F	204516-3
-	⚠ 6	⚠ 7	⚠ 8	M24308/2-13F	M24308/2-13F	204516-2
REMARKS	INSERT MATERIAL	SHELL MATERIAL	SHELL FINISH	MILITARY PART NO ON PACKAGE	MILITARY PART NO ON PACKAGE	PART NO.

THIS DRAWING IS A CONTROLLED DOCUMENT. DIN 10-02-95

J.A. BAKER
CHK

STE TE Connectivity

KIT HDD SERIES
RECEPTACLE SIZE 3(44POS)

DIMENSIONS: INCHES	TOLERANCES UNLESS OTHERWISE SPECIFIED:	APVD	NAME
0 PLC ± -	1 PLC ± -	PRODUCT SPEC	
2 PLC ± -	3 PLC ± .005	APPLICATION SPEC	
4 PLC ± -	ANGLES ± ±	WEIGHT	

MATERIAL: SEE TABLE FINISH: SEE CALLOUTS

SIZE: A1 CAGE CODE: 00779 DRAWING NO: 204516 RESTRICTED TO: -

CUSTOMER DRAWING SCALE: 4:1 SHEET: 1 OF 1 REV: H1

X-ON Electronics

Largest Supplier of Electrical and Electronic Components

Click to view similar products for [TE Connectivity](#) manufacturer:

Other Similar products are found below :

[D38999/24FJ4AN](#) [570416-000](#) [CLTEQ-M81CE-SSRELAY-4-20V](#) [4-1195131-0](#) [650069-000](#) [SMD100-2](#) [358838-000](#) [CB-1022B-78](#)
[RM707012](#) [RP410012](#) [MMS42](#) [1-640426-8](#) [2EDL4CM](#) [DTS20W19-11PD-3028-LC](#) [RM202615](#) [NC6-P104-06](#) [MSPS103B](#) [DTS26F21-](#)
[41HE-LC](#) [DTS26F21-41AE](#) [DTS26F21-41PE-LC](#) [DTS26F21-11SE-3028-LC](#) [30DCB6](#) [1932144-1](#) [293545-4](#) [LVR125S](#) [MS27466T25F4PB](#)
[CKB-38-78010](#) [TR04AI-TINELLOCKRING](#) [1206SFF150F/63-2](#) [D38999/20JB35HA](#) [TE1500A2R2J](#) [D38999/20WC8BB](#) [DTS24F19-11SC-](#)
[3028-LC](#) [D38999/24WG11HA](#) [D38999/24WG11HN](#) [MS27467T21F11H](#) [DJT16E21-11HA](#) [MS27467T21F35J](#) [MS27467T21F11J](#)
[MS27467T21F16H-LC](#) [MS27467T21F35H](#) [MS27467T21F41H-LC](#) [1206SFH150F/24-2](#) [RP330024](#) [DJT16E21-11PA-LC](#) [DJT16E21-11HA-](#)
[LC](#) [DJT16E21-11AA](#) [MS27467T21B11JA](#) [DJT16E21-11JA](#) [MS27467T21B11JA-LC](#)