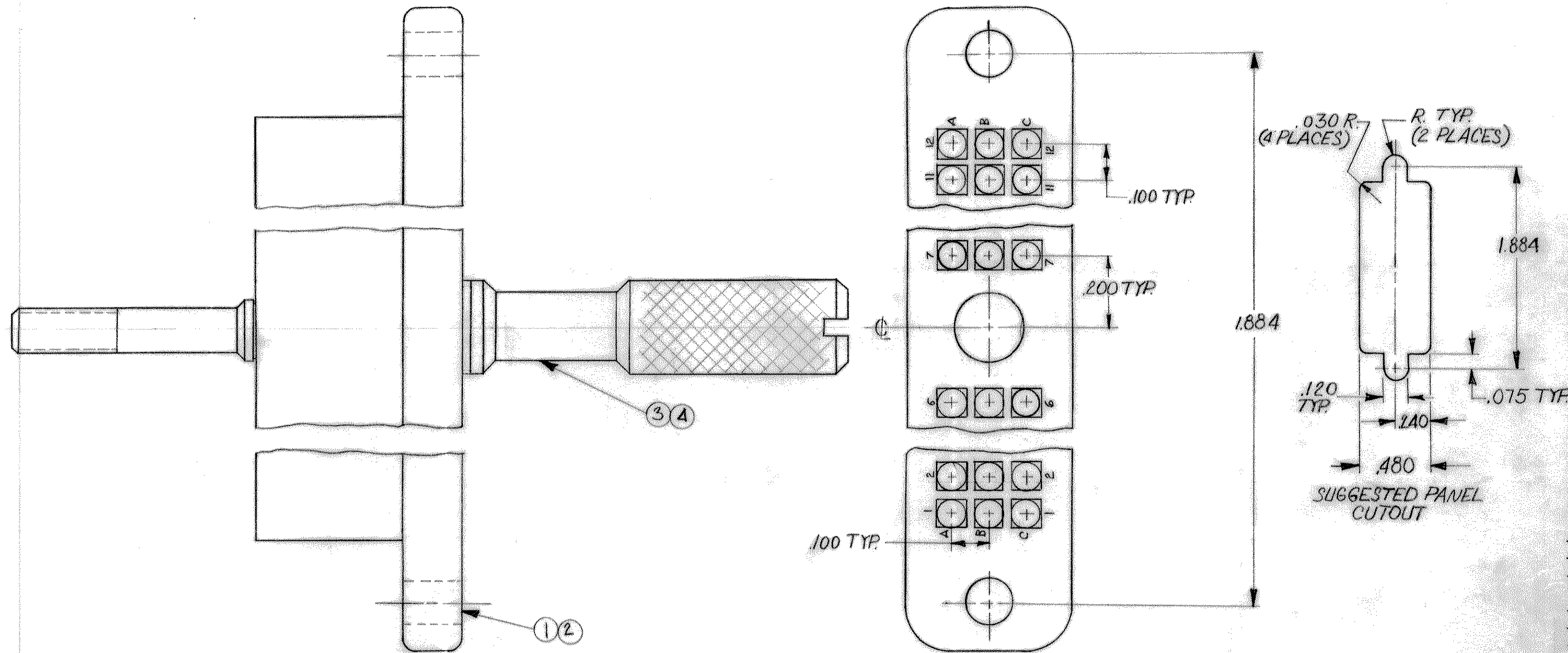


© 1969 BY AMP INCORPORATED. ALL RIGHTS RESERVED. AMP PRODUCTS COVERED BY PATENTS AND/OR PATENTS PENDING.

Unapproved copy may be reproduced without written permission of AMP Inc.

REVISIONS				
ZONE	LTR	DESCRIPTION	DATE	APPROVED
	A	RELEASED AND REVISED PER ECN J-128	3/9/82	RLH
	B	OBS-4; ECN DF-0979	11/5 10-20-86	RLH
	C	REV PER ECN DF-3816	11/5 10-17-90	DBM
	D	REV PER O630-276-01	CT 8-02	CT



QTY	UNIT	DESCRIPTION	ITEM*
1	ASSEMBLY	36 POSITION "HDR" PLUG WITH MALE JACKSCREW	6
1	ASSEMBLY	JACKSCREW ASS'Y SHORT-MALE	5
1	ASSEMBLY	JACKSCREW ASS'Y LONG-MALE	4
1	BLOCK	DIALYL PHTHALATE-BLUE	3
1	BLOCK	PHENOLIC-BLACK	2
1	NUMBER	NAME	DESCRIPTION

NO. REQUIRED PER ASS'Y 204743

CUSTOMER PART NO. MARKED ON OPPOSITE SIDE "AMP"

UNLESS OTHERWISE SPECIFIED DIMENSIONS ARE IN INCHES TOLERANCES ON: DECIMALS ± .005 ANGLES ±		CONTRACT NO.		AMP INCORPORATED HARRISBURG, PENNSYLVANIA	
MATERIAL		DR <i>R. Matthews</i> 10-27-69	NAME 36 POSITION "HDR" PLUG, ASSEMBLY WITH MALE JACKSCREW		
		CHK <i>R. Mills</i> 11-6-69	SIZE C	CODE IDENT NO. 00779	NUMBER 204743
		APPD <i>K. Jones</i> 11-7-69	SCALE #		
		REL <i>P. Jones</i> 11-7-69	SHEET 1 OF 1		
		DSGN APPD			
		OTHER APPD			

PRINT DIST

NUMBER 204743

X-ON Electronics

Largest Supplier of Electrical and Electronic Components

Click to view similar products for [Headers & Wire Housings](#) category:

Click to view products by [TE Connectivity](#) manufacturer:

Other Similar products are found below :

[892-18-020-10-001101](#) [58102-G61-06LF](#) [582553-1](#) [0009485154](#) [009176003701906](#) [0050291907](#) [LY20-4P-DT1-P1E-BR](#) [02.125.8002.8](#)
[609-3404](#) [61062-3](#) [61082-181009](#) [622-3653LF](#) [63453-116](#) [636-1030](#) [636-1427](#) [636-3427](#) [636-4007](#) [641938-9](#) [641991-4](#) [644827-2](#) [65817-](#)
[010LF](#) [65817-015LF](#) [65863-015LF](#) [66207-023LF](#) [67095-007LF](#) [67601157](#) [68645-018](#) [68648-049](#) [70.362.1628.0](#) [70-4210](#) [70-4226B](#) [70-](#)
[4853B](#) [707-5020](#) [707-5028](#) [71.350.2428.0](#) [71918-208LF](#) [71961-016LF](#) [733-134](#) [733-162](#) [754199-000](#) [760-3052](#) [787-8014-00](#) [79531-3000](#)
[FCN-360C032-B](#) [FCN-367T-T012/H](#) [FCN-723D010/2](#) [80.063.4001.1](#) [800-90-001-10-001000](#) [800-90-010-10-002000](#) [801-43-002-10-013000](#)