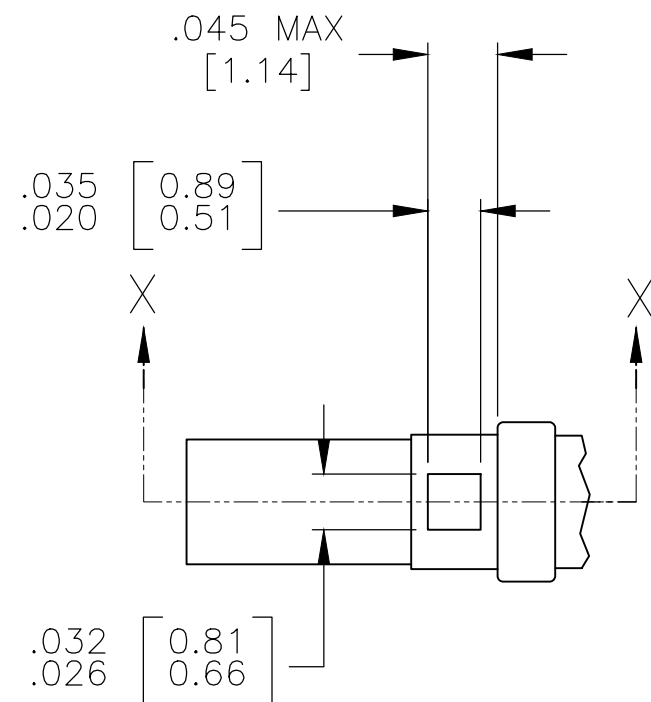
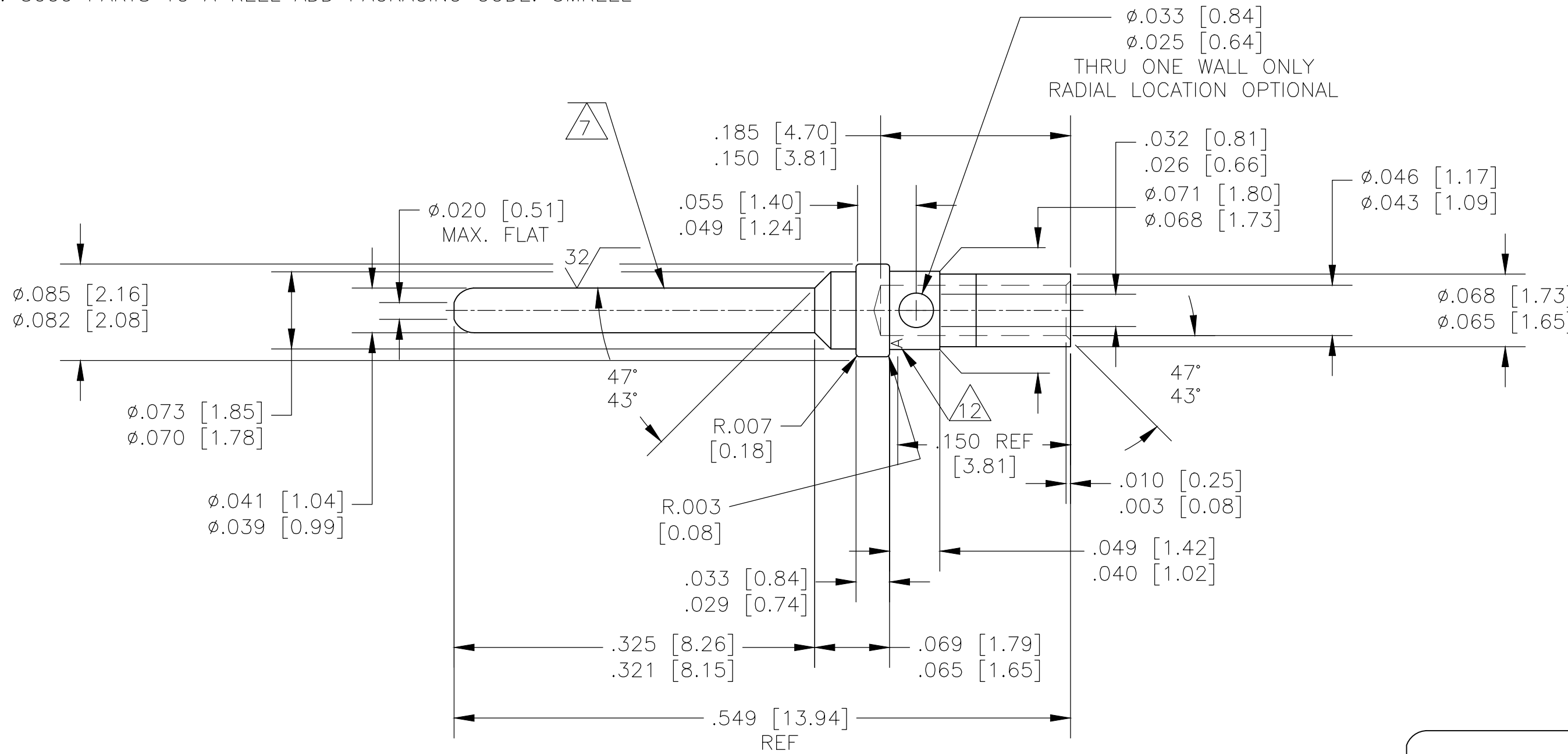


WHEN ORDERING CONTACT ON TAPE, ORDER BY THE TAPE NUMBER PLUS THE PACKAGING CODE AS FOLLOWS:

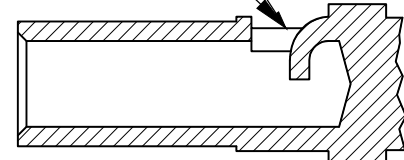
2. FOR USE WITH AMP TAPETRONIC, PNEUMATIC TOOL-
  - A. 1000 PARTS TO A BOX ADD PACKAGING CODE: 1MBOX
3. FOR USE WITH 4/8 INDENT STRIPPER CRIMP-
  - A. 1000 PARTS TO A REEL ADD PACKAGING CODE: 1MREEL
  - B. 5000 PARTS TO A REEL ADD PACKAGING CODE: 5MREEL

| REVISIONS |     |                       |          |     |      |
|-----------|-----|-----------------------|----------|-----|------|
| P         | LTR | DESCRIPTION           | DATE     | DWN | APVD |
|           | AB  | REV PER ECO 20-007904 | 11-25-20 | CT  | DM   |

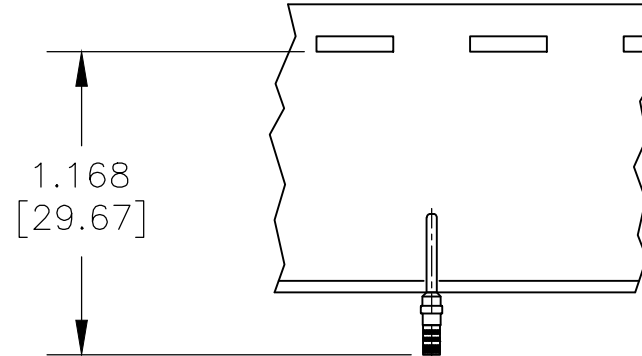
- 1 MATERIAL: COPPER ALLOY PER MIL-C-39029 & MIL-DTL-24308.
2. ALL DIMENSIONS APPLY AFTER PLATING.
- 3 ---
4. ALL DIAMETERS CONCENTRIC WITH EACH OTHER WITHIN .004 T.I.R.
5. PIN MATES WITH SOCKET 205090 (AS 39029/63).
6. ALL SURFACES HAVE  $\sqrt{63}$  OR BETTER FINISH, UNLESS SHOWN.
- 7 POINT OF PLATING MEASUREMENT .188 [4.78] FROM TIP OF PIN.
- 8 PLATING: GOLD PER ASTM-B-488 (TYPE II) OVER NICKEL PER AMS-QQ-N-290.
- 9 PLATING: GOLD PER ASTM-B-488 (TYPE II) OVER COPPER PER AMS 2418, .000050 MIN THK.
- 10 PLATING: GOLD PER ASTM-B-488 (TYPE II, CLASS 0) OVER NICKEL PER AMS-QQ-N-290.
- 11 PLATING:
  - MATING AREA: GOLD PER ASTM-B-488 (TYPE II) OVER NICKEL PER AMS-QQ-N-290.
  - NON MATING AREA: GOLD PER ASTM-B-488 OVER NICKEL PER AMS-QQ-N-290.
- 12 MANUFACTURER'S LOGO ("A" OR "- . .') LOCATION OPTIONAL
- 13 CONTACTS QUALIFIED TO AS39029/64-369
- 14 CONTACTS QUALIFIED TO GSFC-S-311-P-4/10, NASA P/N G-10-P1
- 15 RESTRICTED PART NUMBER.
- 16 CONTACTS MUST MEET DIMENSIONAL & PERFORMANCE REQUIREMENTS OF GSFC-S-311-P-4/08, NASA P/N G-10-P1 & 100% RESIDUAL MAGNETISM.



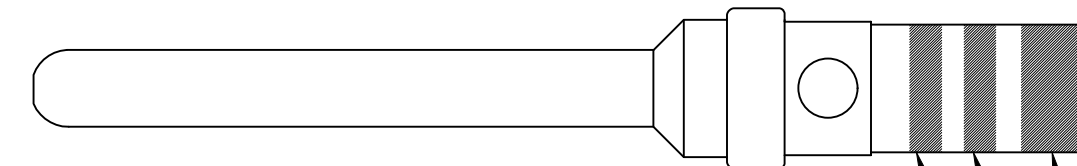
INSPECTION WINDOW THRU ONE WALL ONLY



SECTION X-X



INSPECTION WINDOW OPTIONAL DESIGN



COLOR BANDS  
PART NO 205089-1  
AND 2-205089-1 ONLY

- ORANGE COLOR CODE BAND
- BLUE COLOR CODE BAND
- WHITE COLOR CODE BAND

|    |                    |            |            |
|----|--------------------|------------|------------|
| 16 | WITHOUT COLOR CODE | 9          | 2-205089-6 |
| 15 |                    |            | 2-205089-4 |
| 15 |                    |            | 2-205089-2 |
| 15 |                    |            | 2-205089-1 |
| 13 | WITHOUT COLOR CODE | 8          | 1-205089-1 |
| 13 | WITHOUT COLOR CODE | 10         | 1-205089-0 |
| 14 | WITHOUT COLOR CODE | 9          | 205089-4   |
| 13 | CONTACT ON TAPE    | SAME AS -1 | 205089-2   |
| 13 | AS SHOWN           | 11         | 205089-1   |
|    | DESCRIPTION        | PLATING    | PART NO.   |

|  |  |                  |                                |  |
|--|--|------------------|--------------------------------|--|
| THIS DRAWING IS A CONTROLLED DOCUMENT. |  | DWN              | 25AUG2003                      |  |
|  |  | CHK              | J. KAISER                      |  |
|  |  | APVD             | 10-13-03                       |  |
|  |  | APVD             | D. MILLER                      |  |
|  |  | PRODUCT SPEC     | D. MILLER                      |  |
|  |  | APPLICATION SPEC | 10-13-03                       |  |
|  |  | WEIGHT           | 0.000000                       |  |
|  |  | FINISH           | -                              |  |
|  |  | SCALE            | 10:1                           |  |
|  |  | SHEET            | 1 OF 1                         |  |
|  |  | REV              | AB                             |  |
|  |  | CAGE CODE        | A2 00779                       |  |
|  |  | DRAWING NO       | C=205089                       |  |
|  |  | RESTRICTED TO    | -                              |  |
|  |  | SIZE             | -                              |  |
|  |  | NAME             | PIN SIZE 20 CONTACT, AMPLIMITE |  |
|  |  | TE Connectivity  | -                              |  |

## X-ON Electronics

Largest Supplier of Electrical and Electronic Components

*Click to view similar products for [D-Sub Contacts](#) category:*

*Click to view products by [TE Connectivity](#) manufacturer:*

Other Similar products are found below :

[D02-22-26S-10000](#) [8656352067LF](#) [131A15029X](#) [132A11019X](#) [132J22039X](#) [132A11029X](#) [132A11049X](#) [1757912-1](#) [188582-000](#)  
[162A11889X](#) [1757913-1](#) [212558-1](#) [030-1955-000](#) [053744-0098](#) [053744-0099](#) [053745-0105](#) [053745-0111](#) [601098N003](#) [86303057NLF](#)  
[131A11019X](#) [162A11819X](#) [40-9854MP](#) [1-208778-5](#) [FC120N2](#) [MC7526D/AA](#) [MC8122D/AA](#) [FC4010D-15](#) [FC4006D](#) [121A05329A](#)  
[164C16669X](#) [86566620064LF](#) [C330-8997-101H](#) [131A13019X](#) [DLS3XS5AK40X](#) [09692825723](#) [030-1954-000](#) [L17DM53744207](#)  
[L17RRD1M11400](#) [030-1952-000](#) [1655496](#) [030-1953-000](#) [030-1953-030](#) [132C11039X](#) [132J15019X](#) [132C15019X](#) [132C11019X](#)  
[131A10029X](#) [8638PSC2006LF](#) [8656453067LF](#) [86566520064LF](#)