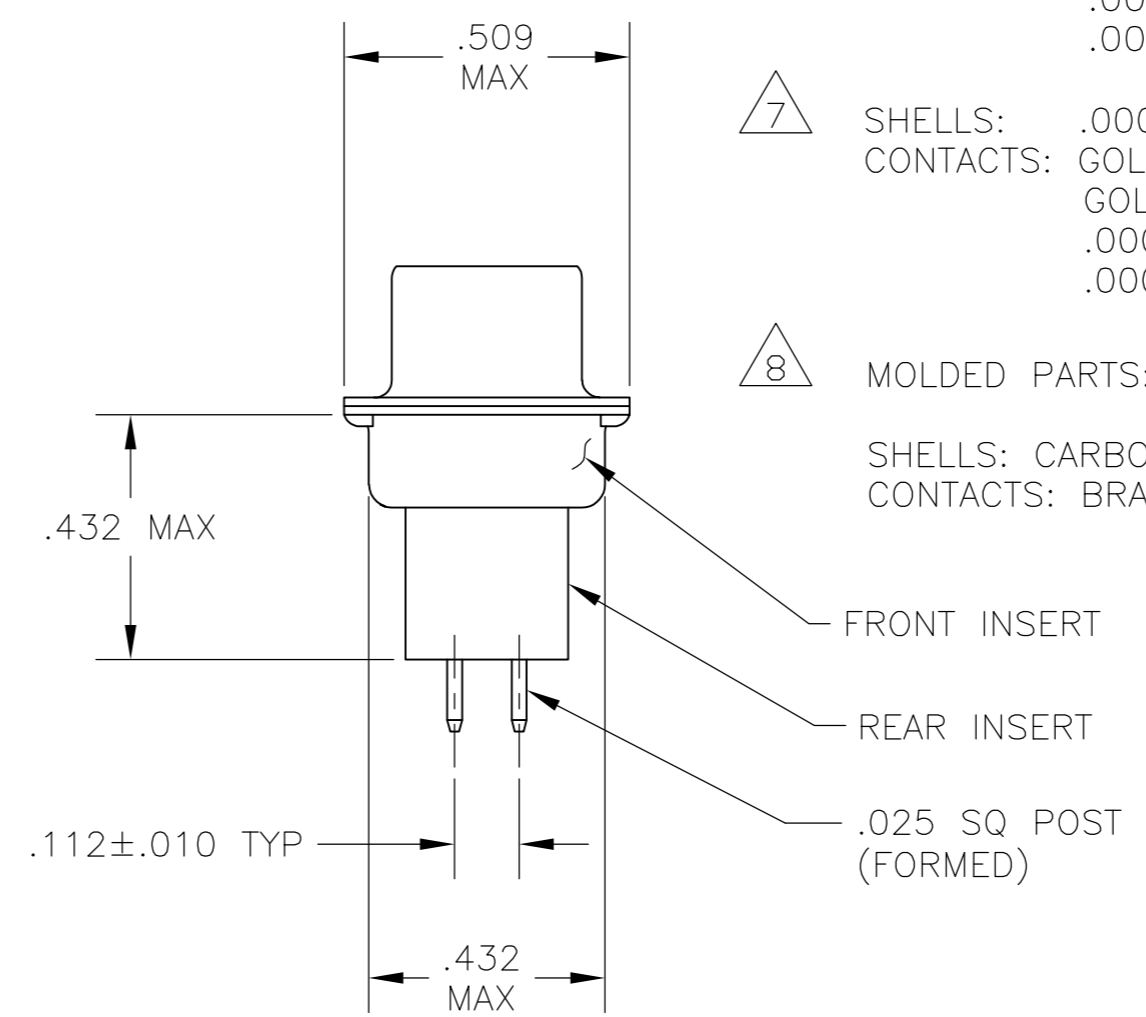
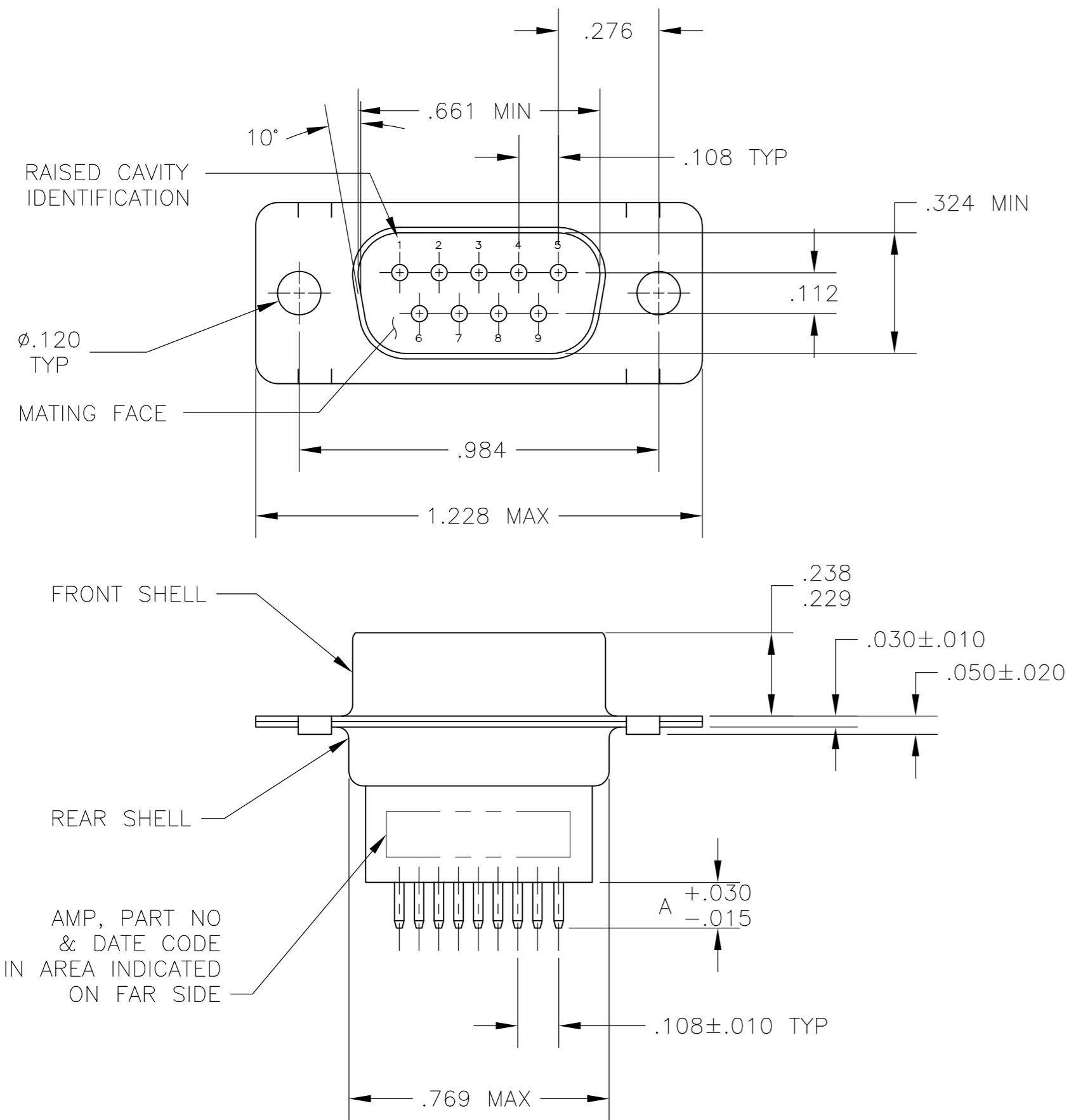


THIS DRAWING IS UNPUBLISHED. RELEASED FOR PUBLICATION  
 © COPYRIGHT 2005 By - ALL RIGHTS RESERVED.

LOC	DIST	REVISIONS					
GP	00	P	LTR	DESCRIPTION	DATE	DWN	APVD
		Z		REVISED PER ECO-14-011808	09AUG2014	AP	SB



- NOTE DELETED.
- NOTE DELETED.
- NOTE DELETED.
- NOTE DELETED.
- NOTE DELETED.
- SHELLS: .000200 MIN ZINC WITH YELLOW CHROMATE COATING.  
 CONTACTS: .000030 MIN GOLD ON MATING END,  
 .000100 MIN TIN-LEAD ON SOLDER END, BOTH OVER  
 .000050 MIN NICKEL.  
 OR  
 GOLD FLASH OVER PALLADIUM-NICKEL  
 .000030 MIN TOTAL ON MATING END,  
 .000100 MIN TIN-LEAD ON SOLDER END, BOTH OVER  
 .000050 MIN NICKEL.
- SHELLS: .000200 MIN ZINC WITH YELLOW CHROMATE COATING.  
 CONTACTS: GOLD PLATED FOR LENGTH OF .150 MIN FROM MATING END,  
 GOLD FLASH IN MATED AREA,  
 .000100 MIN TIN-LEAD ON SOLDER END, ALL OVER  
 .000050 MIN NICKEL.
- MOLDED PARTS: GLASS-FILLED PBT OR GLASS-FILLED NYLON,  
 UL94V-0 RATED. COLOR: BLACK  
 SHELLS: CARBON STEEL  
 CONTACTS: BRASS

SUPSD BY 205733-7	7	.188	205733-8
	6	.188	205733-7
SUPSD BY 745410-5	7	.651	205733-6
SUPSD BY 745410-5	6	.651	205733-5
SUPSD BY 205733-3	7	.427	205733-4
SUPSD BY 745410-1	6	.427	205733-3
SUPSD BY 205733-1	7	.125	205733-2
	6	.125	205733-1
CONTACT FINISH	A		PART NUMBER

THIS DRAWING IS A CONTROLLED DOCUMENT.

DWN	J. POLIGNONE	01FEB07
CHK	E. BRIANT	01FEB07
APVD	E. BRIANT	01FEB07
PRODUCT SPEC	108-40025	
APPLICATION SPEC	114-40013	
WEIGHT	-	
MATERIAL	8	
FINISH	6 7	

**TE** TE Connectivity

PLUG ASSEMBLY, SIZE 1, 9 POSN, VERTICAL  
 AMPLIMITE HDP

SIZE	CAGE CODE	DRAWING NO	RESTRICTED TO
A2	00779	C=205733	-
CUSTOMER DRAWING	SCALE	SHEET	REV
	NTS	1 of 1	Z

## X-ON Electronics

Largest Supplier of Electrical and Electronic Components

*Click to view similar products for [D-Sub Standard Connectors](#) category:*

*Click to view products by [TE Connectivity](#) manufacturer:*

Other Similar products are found below :

[56F711-015](#) [012-9507-004](#) [LV242999-142T12](#) [015-0341-000](#) [015-0372-005](#) [015-0372-008](#) [015-8755-001](#) [020419-0104](#) [012-0467-000](#) [012-0515-000](#) [012-9507-034](#) [012-9507-114](#) [020745-0008](#) [609-25P](#) [M24308/2-23Z](#) [CT2-14S-2PCA34](#) [CT2-18-11PCAU](#) [CT6-10SL-3SC](#) [CT6-10SL-4SC](#) [CT6-14S-2SC](#) [CT6E14SA7SC](#) [M83513/01-FC](#) [M83723/76W24619 L/C](#) [M85049/48-3-2F](#) [6STD09PCM99B70X](#) [6STD09SCM99B30X](#) [6STD09SCT99S40X](#) [6STD15PCT99S40X](#) [6STD15SCM99B30X](#) [6STD15SCT99S40X](#) [6STF09PCM05B70X](#) [7-135760-9](#) [MC11E-10-6SN](#) [747552-3](#) [MD1-21PS](#) [MDM-15SCBRM7-F222](#) [MDM96517-699](#) [MDM96521-744](#) [MDVB1-21SL1](#) [MIK0-1-7SH003](#) [MIKQ6-7SH076](#) [MIKQ7-7PH077](#) [MIKQ7-7PH11](#) [MIKQ7-7PH32](#) [MJSV-28SL61](#) [MKJ4A1F14-55S](#) [8-135760-3](#) [8STD09PCM99B30X](#) [PG-KV/PV-16-GROM-SEALING](#) [GDA15P](#)