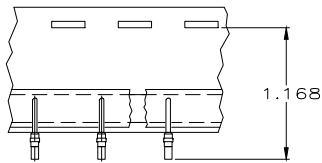
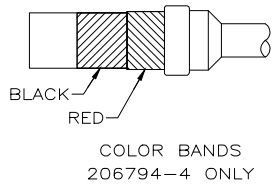
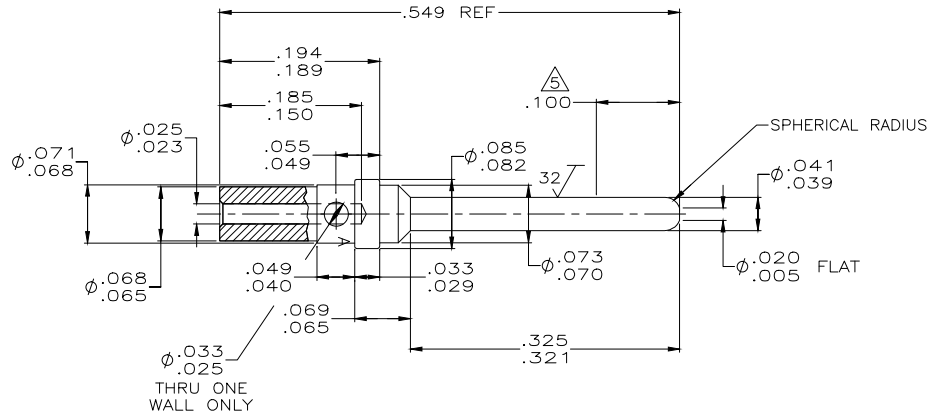


THIS DRAWING IS UNPUBLISHED. RELEASED FOR PUBLICATION  
 © COPYRIGHT - By - ALL RIGHTS RESERVED.

REVISIONS				
P	LTR	DESCRIPTION	DATE	DWN APVD
H	REV PER ECO	17-002439	11MAR11	CT RL

- ALL DIMENSIONS APPLY AFTER PLATING.
- THIS PART COMPLIES WITH SPEC. MIL-C-24308/11, EXCEPT WIRE BARREL.
- ALL DIAMETERS CONCENTRIC WITH EACH OTHER WITHIN .004 T.I.R.
- ALL SURFACES HAVE A 63 SURFACE FINISH OR BETTER UNLESS OTHERWISE NOTED.
- POINT OF PLATING MEASUREMENT.
- FINISH: PLATED GOLD PER ASTM-B-488 OVER COPPER PER AMS-2418.
- RESTRICTED TO SPACE SYSTEMS LORAL.
- FINISH: PLATED GOLD PER ASTM-B-488 OVER NICKEL PER AMS-QQ-N-290.



TAPE MOUNTED  
 206794-3 ONLY  
 SCALE: NTS

NO COLOR CODE		COPPER ALLOY	206794-7
NO COLOR CODE		COPPER ALLOY	206794-6
TAPE MOUNTED		206794-4	206794-5
COLOR CODED		206794-2	206794-4
TAPE MOUNTED		206794-2	206794-3
AS SHOWN		COPPER ALLOY #187	206794-2
REMARKS	FINISH	MATERIAL	PART NUMBER

DIMENSIONS:		TOLERANCES UNLESS OTHERWISE SPECIFIED:		DWN		TE Connectivity	
INCHES		0 PLC ± -		C.C. THOMAS 7/24/00		TE Connectivity	
INCHES		1 PLC ± -		CHK 9-5-00		NAME	
INCHES		2 PLC ± -		R.GROSS 9-5-00		PIN CONTACT, SIZE 20	
INCHES		3 PLC ± .025		APVD R.GROSS 9-5-00		(FOR #26 & #28 AWG WIRE)	
INCHES		4 PLC ± ± .2"		PRODUCT SPEC		APPLICATION SPEC	
MATERIAL		FINISH		WEIGHT		SIZE	
COPPER ALLOY		SEE TABLE		0.000000		A2 00779 C=206794	
				CUSTOMER DRAWING		RESTRICTED TO	
				SCALE 10:1		SHEET 1 of 1 REV H	

## X-ON Electronics

Largest Supplier of Electrical and Electronic Components

*Click to view similar products for [D-Sub Contacts](#) category:*

*Click to view products by [TE Connectivity](#) manufacturer:*

Other Similar products are found below :

[D02-22-26S-10000](#) [8656352067LF](#) [131A15029X](#) [132A11019X](#) [132J22039X](#) [132A11029X](#) [132A11049X](#) [132A12059X](#) [1757912-1](#) [188582-000](#) [162A11889X](#) [1757913-1](#) [212558-1](#) [030-1955-000](#) [053744-0098](#) [053744-0099](#) [053745-0105](#) [053745-0111](#) [601098N003](#) [D-610-10CS2962](#) [86303057NLF](#) [131A11019X](#) [162A11819X](#) [40-9854MP](#) [1-208778-5](#) [FC120N2](#) [MC7526D/AA](#) [MC8122D/AA](#) [FC4010D-15](#) [FC4006D](#) [121A05329A](#) [164C16669X](#) [86566620064LF](#) [131A13019X](#) [DLS3XS5AK40X](#) [09692825723](#) [030-1954-000](#) [L17DM53744207](#) [L17RRD1M11400](#) [030-1952-000](#) [1655496](#) [030-1953-000](#) [030-1953-030](#) [132C11039X](#) [132J15019X](#) [132C15019X](#) [132A10039X](#) [131A10029X](#) [8638PSC2006LF](#) [8656453067LF](#)