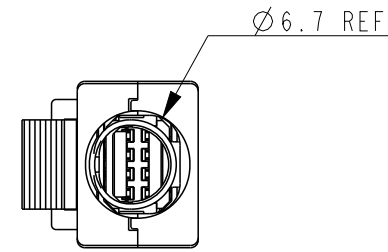
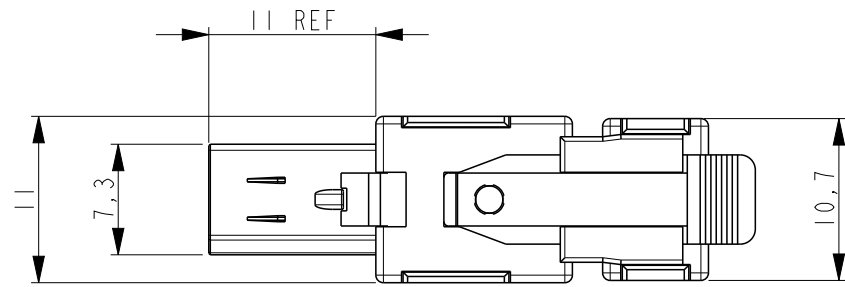
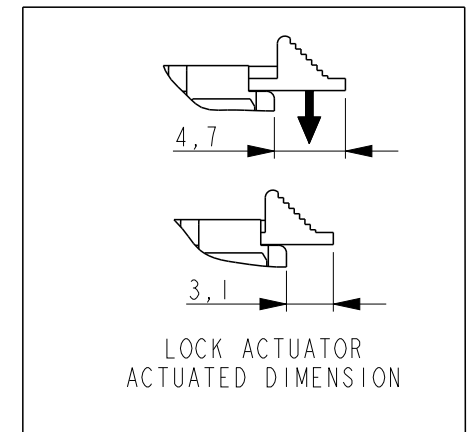


P/N 2069250-1 AS SHOWN:

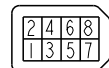
P	LTR	DESCRIPTION	DATE	DWN	APVD
	C	REVISED	01OCT2009	T.S	N.Y
	D	ECR-18-010764	27JUL2018	P.P	P.J
	D1	NOTE 5 ADDED (PROP 65 WARNING)	25AUG2020	SS	JDB
	D2	REMOVED SHEET3; INFO MOVED TO SH.1	17NOV2020	SM	PP



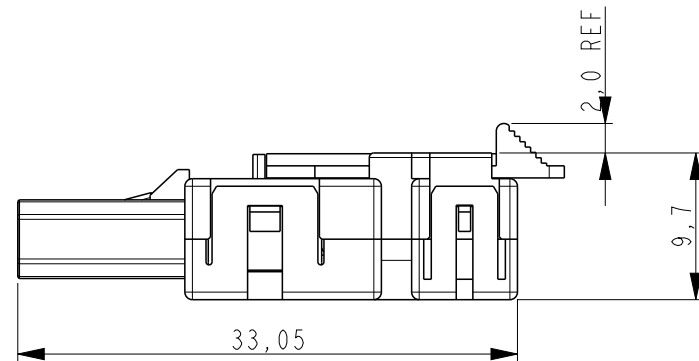
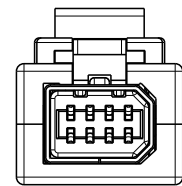
WARNING: This product can expose you to chemicals including **ANTIMONY TRIOXIDE** which is known to the state of California to cause cancer. For more information, visit www.P65Warnings.ca.gov.



D-SHAPE TYPE 1

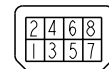


CIRCUIT NO.

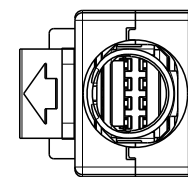
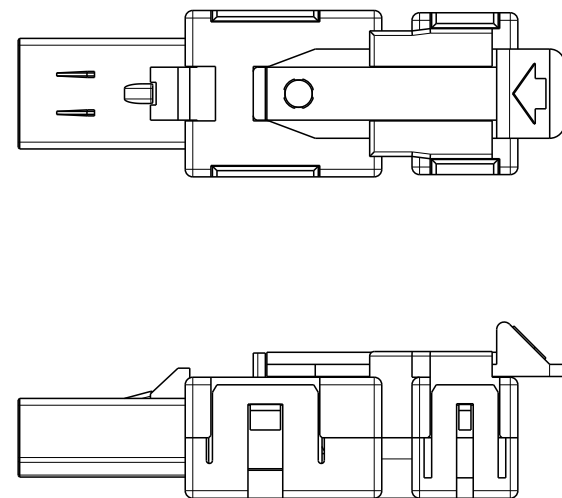
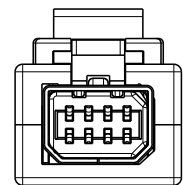


P/N 1-2069250-2 AS SHOWN:

D-SHAPE TYPE 2



CIRCUIT NO.



1. APPLICABLE CABLE RECOMMENDED AWG30~26 X 8C
MAX AWG22 X4C
OVERALL DIAMETER 6.7MAX.
2. DATE CODE IS DESCRIBED ON THE BUNDLED CUSTOMER DRAWING.
3. THE PRODUCT OF THIS DRAWING NO. IS PACKED INDIVIDUALLY IN PACKAGE OF EXCLUSIVE USE.
BEFORE THIS KIT IS PACKED TO TRAY, ITEM 6 SHOULD BE ASSEMBLED TO ITEM 7.
4. MATERIALS:
 - HEAT SHRINKABLE TUBE: CROSS-LINKED POLYOLEFIN
 - COPPER FOIL TAPE: ELECTROLYSIS COPPER FOIL, ACRYLIC ADHESIVE MATERIAL
 - BOTTOM COVER: POLYESTER OF GLASS FILLED THERMO PLASTIC(UL94V-0)
 - TOP COVER,EJECTOR EXT VER.: POLYESTER OF GLASS FILLED THERMO PLASTIC(UL94V-0)
 - PLUG LOCK ACTUATOR: POLYESTER OF GLASS FILLED THERMO PLASTIC(UL94V-0)
 - LOCK EJECTOR EXT VER: POLYESTER OF GLASS FILLED THERMO PLASTIC(UL94V-0)
 - PLUG HSG COVER: POLYESTER OF GLASS FILLED THERMO PLASTIC(UL94V-0)
 - PLUG HSG SUB ASSY:
 - HSG:POLY-AMID OF GLASS FILLED THERMO PLASTIC(UL94V-0)
 - CONTACT PLATING:COPPER ALLOY

UNDER ALL SURFACE: Ni PLATING 1.27µm. MIN.
TOP CONTACT AREA: Au PLATING 0.5µm. MIN.
SOLDERING AREA: Au FLASH

5 PROP 65 WARNING LABEL:

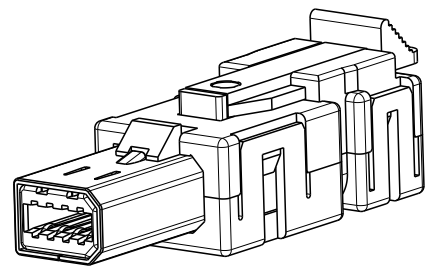
- THE WARNING LABEL ON THE PRODUCT OR LOWEST LEVEL PACKAGING.
- CHEMICAL NAME: ANTIMONY TRIOXIDE

THIS DRAWING IS A CONTROLLED DOCUMENT.		DWN	03DEC2008		 TE Connectivity	
DIMENSIONS:		CHK	03DEC2008			
mm		APVD	03DEC2008			
TOLERANCES UNLESS OTHERWISE SPECIFIED:		PRODUCT SPEC	108-78405			
±0.3		APPLICATION SPEC	114-5431		NAME	INDUSTRIAL MINI I/O PLUG CONN. KIT TYPE 1 and 2, SOLDER LOCK EJECTOR EXTEND VERSION
0 PLC ±		WEIGHT	-		SIZE	A3
1 PLC ±		CUSTOMER DRAWING	CUSTOMER DRAWING		CAGE CODE	00779
2 PLC ±		SCALE	2:1		DRAWING NO	C-2069250
3 PLC ±0.013		SHEET	1 OF 2		RESTRICTED TO	
4 PLC ±		REV	D2			
ANGLES ±						
FINISH						
SEE TABLE						
表参照						

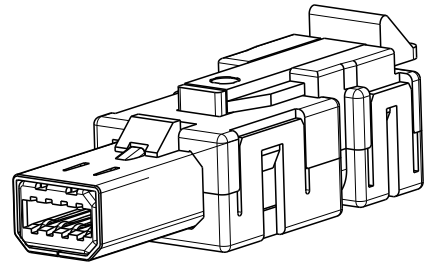
REVISIONS

P	LTR	DESCRIPTION	DATE	DWN	APVD
-	-	SEE SHEET 1	-	-	-

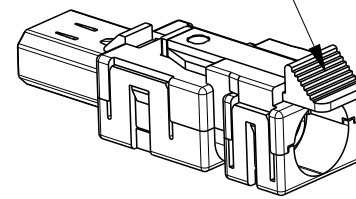
D-SHAPE TYPE 1



D-SHAPE TYPE 2

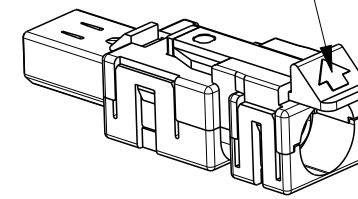


ACTUATOR TYPE A1 or A2

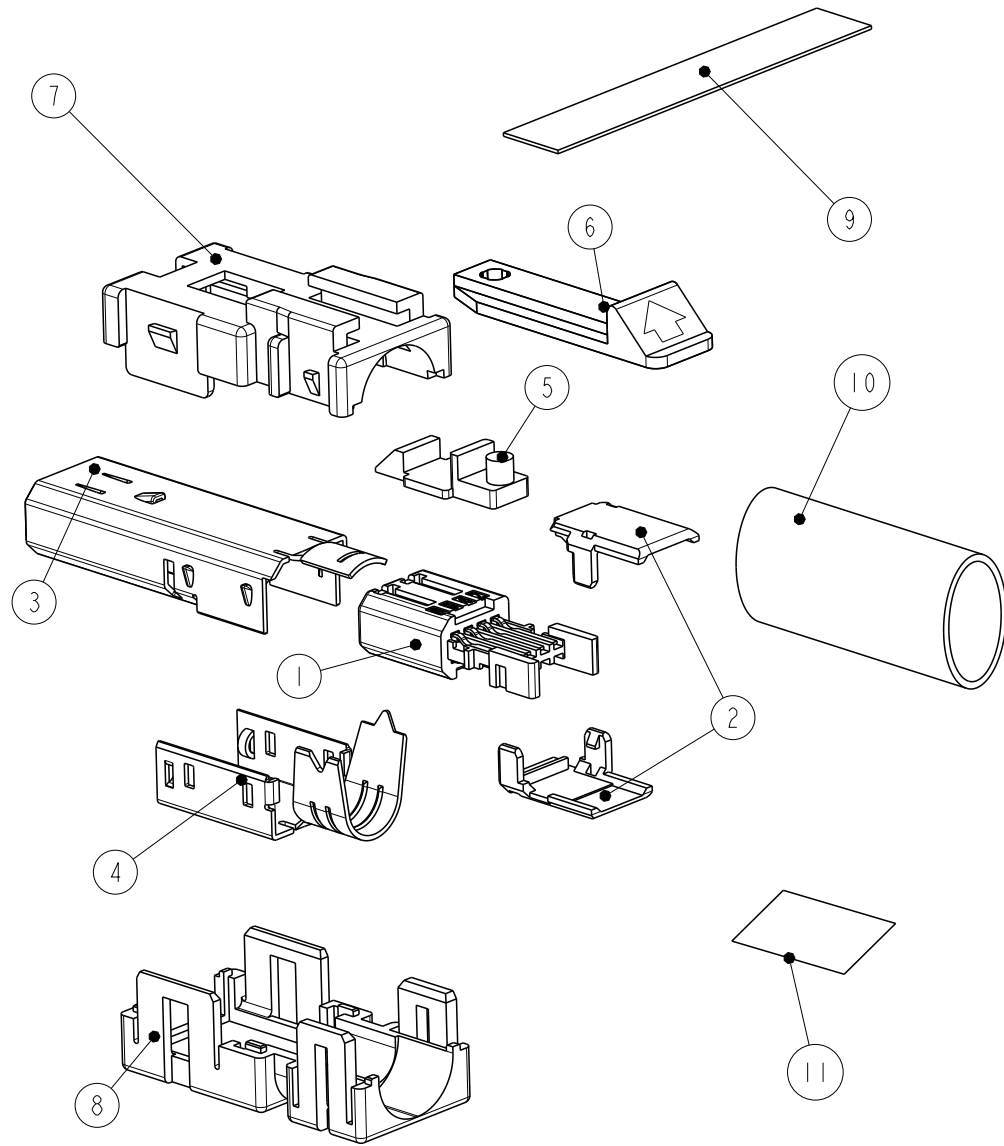


SCALE 3:2

ACTUATOR TYPE B



SCALE 3:2



△ 5		△ 5		△ 5		△ 5		△ 5		△ 5					
INACTIVE				INACTIVE	INACTIVE			ACTUATOR TYPE	COLOR						
TYPE 2	TYPE 1	TYPE 2	TYPE 1	TYPE 2	TYPE 1	TYPE 2	TYPE 1								
										CUSTOMER DRAWING NO. 2069250		PRINTED ON A4 SIZE		11	
										HEAT SHRINKABLE TUBE				10	
										COPPER FOIL TAPE				9	
									BLACK	BOTTOM COVER				8	
									BLACK	TOP COVER, EJECTOR EXTENSION VERSION				7	
-	-	-	-	-	-	-	-	B	ORANGE	PLUG LOCK ACTUATOR		6			
		-	-	-	-	-	-	A2	ORANGE						
-	-			-	-	-	-	B	WHITE						
-	-	-	-	-	-	-	-	A2	WHITE						
-	-	-	-	-	-	-	-	A1	BLACK	LOCK EJECTOR EXTENSION VERSION				5	
									BLACK	BOTTOM SHELL				4	
	-		-		-		-			TOP SHELL				3	
-		-		-		-				PLUG HOUSING COVER				2	
2	2	2	2	2	2	2	2			PLUG HOUSING SUB ASSY				1	
	-		-		-		-								
-		-		-		-									
1-2069250-3	2069250-3	1-2069250-2	2069250-2	1-2069250-1	2069250-1					PART NAME		ITEM NO.			

THIS DRAWING IS A CONTROLLED DOCUMENT.

DWN S. INOMATA 03DEC2008
 CHK A. OOISHI 03DEC2008
 APVD A. OOISHI 03DEC2008

TE Connectivity

INDUSTRIAL MINI I/O
 PLUG CONN. KIT TYPE 1 and 2,
 SOLDER LOCK EJECTOR EXTEND VERSION

108-78405
 APPLICATION SPEC
 114-5431
 WEIGHT -

SIZE A3 CAGE CODE 00779 DRAWING NO. C-2069250 RESTRICTED TO

CUSTOMER DRAWING SCALE 2:1 SHEET 2 OF 2 REV D2

DIMENSIONS: mm	TOLERANCES UNLESS OTHERWISE SPECIFIED: 0-PLC ± 1-PLC ± 2-PLC ± 3-PLC ±0,013 4-PLC ± ANGLES ±
MATERIAL	FINISH

X-ON Electronics

Largest Supplier of Electrical and Electronic Components

Click to view similar products for [Modular Connectors / Ethernet Connectors](#) category:

Click to view products by [TE Connectivity](#) manufacturer:

Other Similar products are found below :

[8949-H88/06BLKA/SN](#) [74441-0010/BKN](#) [MP1010RX-1000](#) [MP44RX-1000](#) [PHJ-4P4C-1-V-4](#) [PHP-6P6C-5](#) [GAX-3-66](#) [GAX-8-62](#) [GDCX-PA-66-50](#) [GDCX-PN-64](#) [GDCX-PN-66](#) [GDCX-PN-66-50](#) [GDLX-A-66](#) [GDLX-N-66](#) [GDLX-S-66](#) [GDLX-S-88K](#) [GDTX-S-88-50](#) [GDX-PA-1010](#) [GLX-N-1010M-BLK](#) [GLX-S-88M-BLK](#) [GMX-N-1010](#) [GMX-S-1010](#) [GMX-S-66](#) [GMX-SMT4-N-88](#) [GPX-2-64](#) [GSGX-N-2-88](#) [GSGX-N-4-88](#) [GSX-NS2-88-3.05](#) [GSX-NS2-88-3.05-50](#) [GSX-NS-88-3.05-50](#) [PT-108A-8C-UL](#) [PT-J951-8C](#) [PTS-J531-8CS-50UL](#) [1-1775629-2](#) [A-2014-0-4](#) [GWLX-S-88-GR](#) [GWLX-S9-88-YG](#) [DC-1021-8-WH-6](#) [1300530003](#) [1324640-4](#) [RJ11FTVC2G](#) [RJ11FTVC2N](#) [RJFTVX2SA1G](#) [132764-001](#) [1413235](#) [MP88X-1000](#) [MPS88RX-5000](#) [E5288-S000K3-L](#) [E5908-15A242-L](#) [155302-001](#)