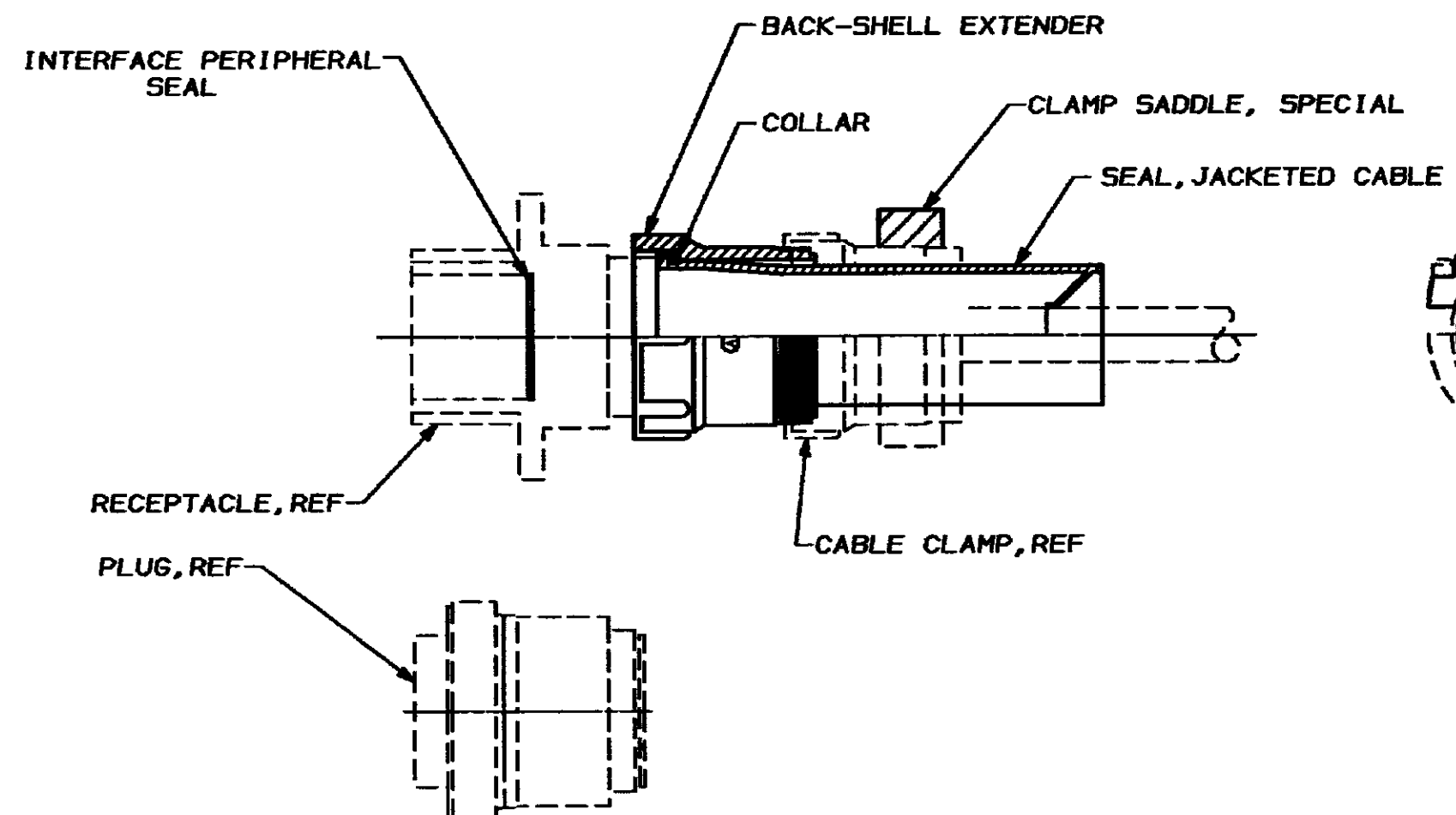


DRAWING MADE IN THIRD ANGLE PROJECTION

THIS DRAWING IS UNPUBLISHED.		RELEASED FOR PUBLICATION		, 19		MOD		LOC		DIST		REVISIONS			
© COPYRIGHT 19		BY AMP INCORPORATED.		ALL INTERNATIONAL RIGHTS RESERVED.		23	BD	39	P	F	ZONE	LTR	DESCRIPTION	DATE	APPD
									✓	✓	E	REDRAWN		8/1/90	KA



.600-.875	207052-3
.450-.600	207052-2
.300-.450	207052-1
CABLE RANGE Δ	PART NUMBER

1. SEAL KIT CONSISTS OF: ONE CABLE SEAL, ONE COLLAR, ONE INTERFACE SEAL, BACKSHELL EXTENDER & SPECIAL CLAMP SADDLE.
 2. RECEPTACLE, PLUG AND CABLE CLAMP ARE SHOWN FOR REFERENCE ONLY.
 3. SEAL KIT MAY BE USED WITH EITHER PLUG OR RECEPTACLE. WHEN USED WITH PLUG, THE INTERFACE SEAL IS DISCARDED.
- Δ CABLE RANGES FOR REFERENCE ONLY. IF IN DOUBT, CONTACT AMP PRODUCT ENGINEERING.

DO NOT SCALE PRINT. UNLESS SPECIFIED DIMENSIONS IN INCHES TOLERANCES ON:		AMP AMP Incorporated Harrisburg, PA 17105-3508	
2 P/L DEC * -	3 P/L DEC * -	CHECKED BY S. RIDLEY 88	DATE 4-26-91
ANGLES * -	MATERIAL	APPROVED BY R. Stone	DATE 4-30-91
FINISH	APPLICATION SPEC	JACKETED CABLE SEAL KIT, SHELL SIZE 23, CPC	
WEIGHT	SCALE	SIZE B	DRAWING NO 207052
	SCALE 1:1	CAGE CODE 00779	SHEET 1 OF 1

X-ON Electronics

Largest Supplier of Electrical and Electronic Components

Click to view similar products for [Standard Circular Connector](#) category:

Click to view products by [TE Connectivity](#) manufacturer:

Other Similar products are found below :

[5M2530B10P](#) [600259N006](#) [600273N007](#) [6134-336-13149](#) [6134-337-11149](#) [6134-337-2390](#) [6134-341-17149](#) [6280-4SG-516](#) [6280-7SG-3DC](#)
[6290](#) [6291A](#) [66200A-10](#) [680-SMG](#) [681-PMG](#) [CXS3102A14S2P](#) [CXS3102A181S](#) [7271-6SG-300](#) [7282-3PG-300-CH3](#) [75-474014-05S](#) [75-](#)
[474618-01S](#) [75-474618-04P](#) [75-474618-04S](#) [799539-000](#) [MI8-SE](#) [805-005-07NF11-19PC](#) [805-005-07NF15-7PA](#) [8280-4PG-516](#) [8280-7PG-](#)
[519](#) [8282-5PG-519](#) [836783-1](#) [MP-4102-25P-C](#) [862256-1](#) [864019-2](#) [866857-1](#) [867865-1](#) [PT01SP-14-18P](#) [PT08P-14-5S](#) [120-1833-000](#)
[QCM019PC2DC012B](#) [1-2069279-1](#) [121583-0217](#) [121667-0020](#) [129591AU](#) [1000B BULK](#) [RD10A16-19-P6CS051/1](#) [RD10A20-31-](#)
[P8CS051/1](#) [RD16A14-12-S6CS051/2](#) [1301240290](#) [1301240347](#) [1301860202](#) [1301240268](#)