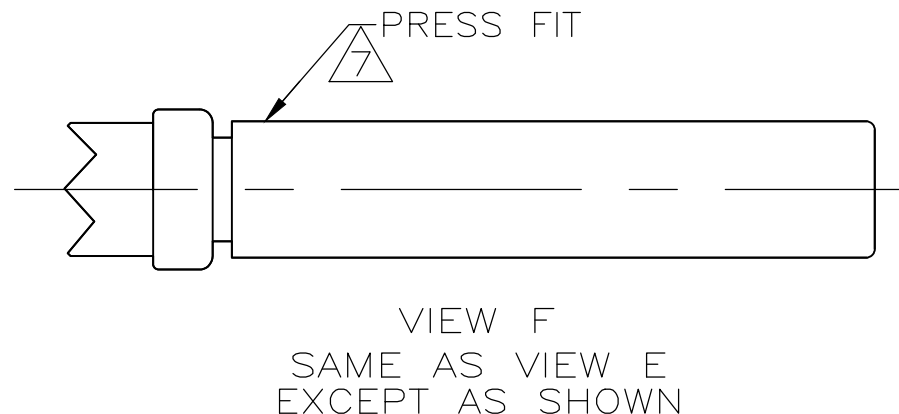
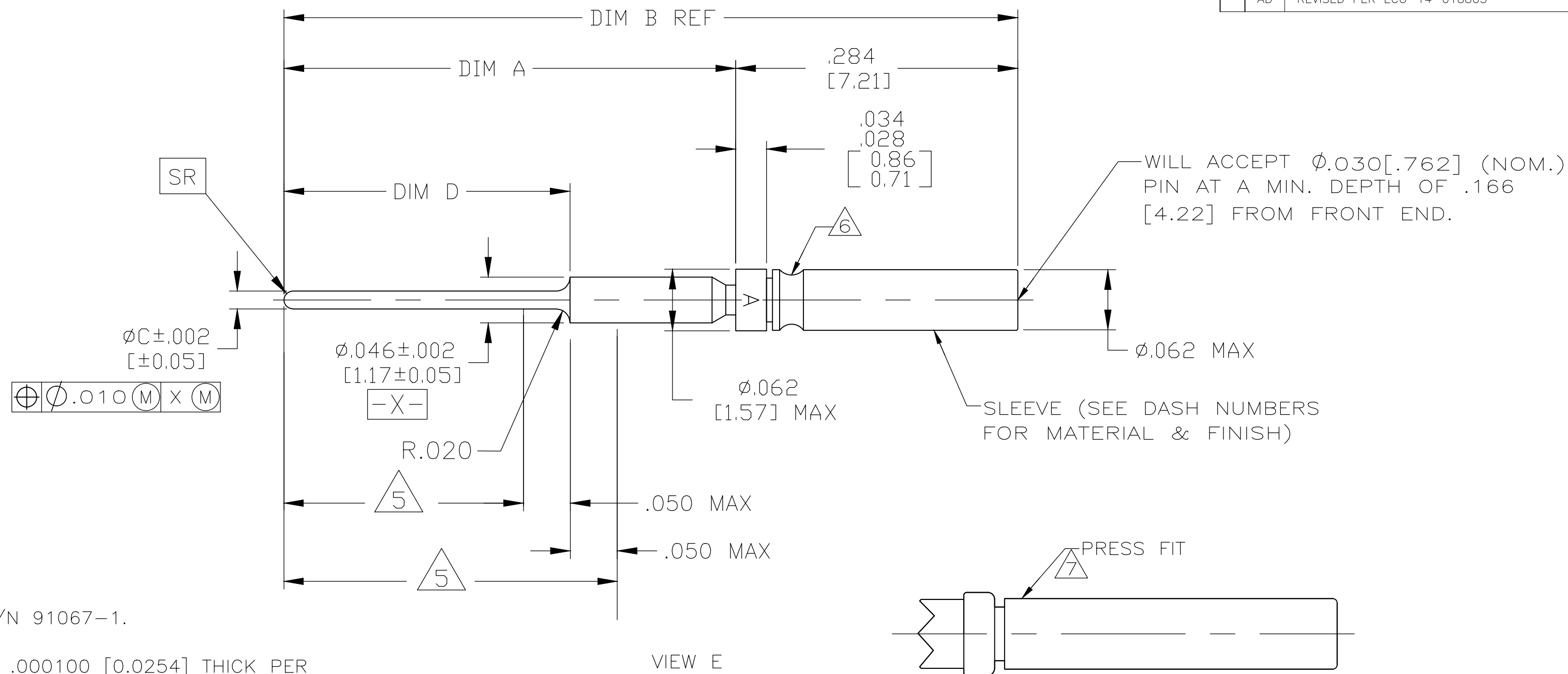


THIS DRAWING IS UNPUBLISHED. RELEASED FOR PUBLICATION
 © COPYRIGHT - By - ALL RIGHTS RESERVED.

LOC		DIST		REVISIONS			
P	LTR	DESCRIPTION	DATE	DWN	APVD		
AD		REVISED PER ECO-14-018805	10JAN15	MGM	CT		



- 1. INSERTION/EXTRACTION TOOL AMP P/N 91067-1.
- 2. CONTACT BODY AND HOOD FINISH:
GOLD PLATED .000050 [0.0127] TO .000100 [0.0254] THICK PER ASTM-B-488, TYPE I, CODE C OVER COPPER PLATE
.000100 [0.0254] TO .000250 [0.0635] THICK PER SAE-AMS 2418-1.
- 3. CONTACT BODY FINISH:
GOLD PLATED .000050 [0.0127] TO .000100 [0.0254] THICK PER ASTM-B-488, TYPE I, CODE C OVER COPPER PLATE
.000100 [0.0254] TO .000250 [0.0635] THICK PER SAE-AMS 2418-1.
HOOD FINISH:
PASSIVATED PER ASTM-A-380
- 4. CONTACT BODY FINISH:
GOLD PLATED .000050 [0.0127] TO .000100 [0.0254] THICK PER ASTM-B-488, TYPE I, CODE C OVER NICKEL PLATE
.000050 [0.0127] TO .000150 INCH THICK PER QQ-N-290,
- 5. THIS AREA IS SOLDER DIPPED. 207684-8 & 1-207684-0 ONLY.
- 6. SLEEVE MAY BE CRIMPED OR DIMPLED ONTO CONTACT BODY.
- 7. SLEEVE MAY BE PRESS FIT, CRIMPED OR DIMPLED ONTO CONTACT BODY.
- 8. CONTACTS MEET ALL APPLICABLE PERFORMANCE REQUIREMENTS OF SAE-AS39029.
- 9. CONTACT BODY MATERIAL:
LEADED NICKEL COPPER OR COPPER ALLOY PER ASTM-B-197
HOOD MATERIAL:
BRASS PER ASTM-B-36 OR COPPER ALLOY PER ASTM-B-197
- 10. CONTACT BODY MATERIAL:
LEADED NICKEL COPPER OR COPPER ALLOY PER ASTM-B-197
HOOD MATERIAL:
STAINLESS STEEL PER ASTM-A-240
- 11. CONTACT BODY MATERIAL:
BERYLLIUM COPPER PER ASTM-B-197 OR ASTM-B-196.
HOOD MATERIAL:
STAINLESS STEEL, UNS S30500 IAW ASTM A240/A240M OR AMS5514.
HOOD FINISH:
PASSIVATED IAW AMS2700, METHOD 1, TYPE OPTIONAL, CLASS 4.
- 12. PRELIMINARY NOT RELEASED FOR PRODUCTION

CALLOUT	VIEW	FINISH	MATERIAL	DIM D ± .010	ØC	DIM B	DIM A	PART NO
6	VIEW E	2	9	.268[6.8]	.018[0.46]	.719[18.26]	.435[11.05]	1-207684-2
5, 6	VIEW E	2	9	.393[9.98]	.018[0.46]	.844[21.44]	.560[14.22]	1-207684-0
6	VIEW E	2	9	.498[12.64]	.020[0.51]	.949 [24.10]	.665 [16.89]	207684-9
5, 6	VIEW E	2	9	.293[7.44]	.018[0.46]	.744[18.90]	.460[11.68]	207684-8
7	VIEW F	3	10	.393[9.98]	.025[0.64]	.844[21.44]	.560[14.22]	207684-7
7	VIEW F	4	11	.643[16.33]	.018[0.46]	1.094[27.79]	.810[20.57]	207684-6
7	VIEW F	4	11	.393[9.98]	.018[0.46]	.844[21.44]	.560[14.22]	207684-5
7	VIEW F	4	10	.393[9.98]	.025[0.64]	.844[21.44]	.560[14.22]	207684-4
6	VIEW E	2	9	.293[7.44]	.018[0.46]	.744[18.90]	.460[11.68]	207684-3
6	VIEW E	2	9	.643[16.33]	.018[0.46]	1.094[27.79]	.810[20.57]	207684-2
6	VIEW E	2	9	.393[9.98]	.018[0.46]	.844[21.44]	.560[14.22]	207684-1
REMARKS	SEE VIEW	FINISH	MATERIAL	DIM D ± .010	ØC	DIM B	DIM A	PART NO

THIS DRAWING IS A CONTROLLED DOCUMENT.

DWN T. ALEXANDER 11-15-91	 TE Connectivity SOCKET CONTACT, POSTED SIZE 22D					
CHK F. KINSEY 11-18-91						
APVD F. KINSEY 11-18-91						
NAME						
MATERIAL SEE CALLOUT	FINISH SEE CALLOUT	WEIGHT -	SIZE A2	CAGE CODE 00779	DRAWING NO C-207684	RESTRICTED TO -
CUSTOMER DRAWING		SCALE 10:1	SHEET 1 OF 1	REV AD		

X-ON Electronics

Largest Supplier of Electrical and Electronic Components

Click to view similar products for [D-Sub Contacts](#) category:

Click to view products by [TE Connectivity](#) manufacturer:

Other Similar products are found below :

[173112-0723](#) [173112-0393](#) [173112-0389](#) [173112-0750](#) [173112-0912](#) [D02-22-22P-10000](#) [D02-22-26S-10000](#) [FMP009P104](#) [FMP010P104](#)
[FMP010S104](#) [FMP016P104](#) [FMP051S110](#) [FMX006S128B](#) [131A11039X](#) [131J21029X](#) [132J22039X](#) [132A11029X](#) [132A11049X](#)
[132C12029X](#) [RMPIR01S02E2RLF](#) [DM53744-1](#) [1757912-1](#) [188582-000](#) [162A11839X](#) [162A11889X](#) [1757913-1](#) [FMP006S110](#)
[FMP008P104](#) [FMP009S104](#) [FMP139S115](#) [212558-1](#) [D02-22-26P-10000](#) [L17DM53744217](#) [030-1955-000](#) [030-50634](#) [053744-0098](#)
[601064N004](#) [601098N003](#) [6-745288-2](#) [D-610-10CS2962](#) [86303057NLF](#) [DM537425001NCLF](#) [173112-0045](#) [162A11819X](#) [1731120397](#) [40-](#)
[9854MP](#) [1-208778-5](#) [1-745288-3](#) [173112-0455](#) [121A05329A](#)