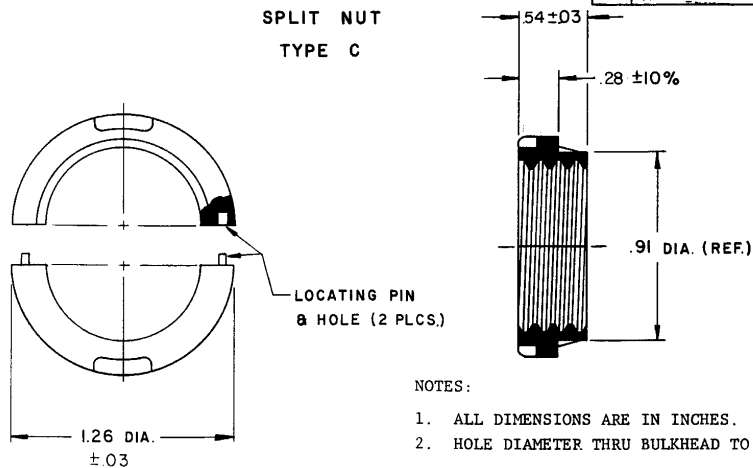


REVISIONS			
LTR	DESCRIPTION	DATE	APPROVED
B		5-18-83	ON REC. BULK SAS 2/1
C	CHANGED -13 NYLON, 30% GLASS FILLED WAS -13 NYLON, 35% GLASS FILLED	12/13/83	93 SAS

SPLIT NUT  
TYPE C



NOTES:

1. ALL DIMENSIONS ARE IN INCHES.
2. HOLE DIAMETER THRU BULKHEAD TO BE  $.94 \pm .02$

ORDERING INFORMATION:

BASE PART NUMBER 207A412 -13  
 FEEDTHROUGH MATERIAL -13 NYLON, 30% GLASS FILLED

SPECIFICATION CONTROL DRAWING (LIMITED DISTRIBUTION)

THIS DRAWING AND THE INFORMATION SET FORTH HEREON ARE THE PROPERTY OF RAYCHEM CORPORATION, AND ARE TO BE HELD IN TRUST AND CONFIDENCE. PUBLICATION, DUPLICATION, DISCLOSURE, OR USE FOR ANY PURPOSE NOT EXPRESSLY AUTHORIZED IN WRITING BY RAYCHEM CORPORATION IS PROHIBITED.	DRAWN	C. WARREN 11/2/82	<b>Raychem</b>	RAYCHEM CORPORATION 300 CONSTITUTION DRIVE MENLO PARK, CALIFORNIA 94025		
	CHECKED	S. P. WOOD 11-2-82		TITLE		
	DESIGN APPD		SPLIT NUT - TYPE C			
	MFG APPD	R. B. 11/16/82	CODE IDENT.	DWG. NO.	207A412-13	
	QC APPD	D. HAY 11-8-82	NO. 08080			
MKTG APPD	J. HOFFMAN 11/16/82	DO NOT SCALE THIS DRAWING				
TECH SER	RELIANCE 11/8/82	PROJECT	SIZE B	SCALE	SHEET   OF	

## X-ON Electronics

Largest Supplier of Electrical and Electronic Components

*Click to view similar products for [Screws & Fasteners](#) category:*

*Click to view products by [TE Connectivity](#) manufacturer:*

Other Similar products are found below :

[5721-1440-1/4-SS](#) [593503FX](#) [0098.0094](#) [0098.9206](#) [0098.9219](#) [0098.9262](#) [596-2114-013](#) [59781-6](#) [0098.0026](#) [0098.9210](#) [0098.9212](#) [60227-01](#) [60227-04](#) [60227-08](#) [60687-01](#) [LOCK WASHER Black](#) [618-00001](#) [62153-03](#) [62153-11](#) [M316-KSSTMCZ100](#) [M3440-SS](#) [M3442-SS](#) [M3448-SS](#) [6292-1](#) [6-306105-9](#) [6-306131-4](#) [690432-1](#) [699161-000](#) [7230-3](#) [7244](#) [7248-1](#) [7248-2](#) [73542-02](#) [CAPTIVE SHORT THUMBSCREW](#) [745564-1](#) [F1209](#) [751-00001](#) [7680](#) [809704-1](#) [8700](#) [8860220](#) [9047](#) [9521](#) [992326-6](#) [992763-3](#) [1-18024-0](#) [1-18028-2](#) [A168P1](#) [A495P1](#) [1-24921-1](#) [125416-1](#) [1260](#)