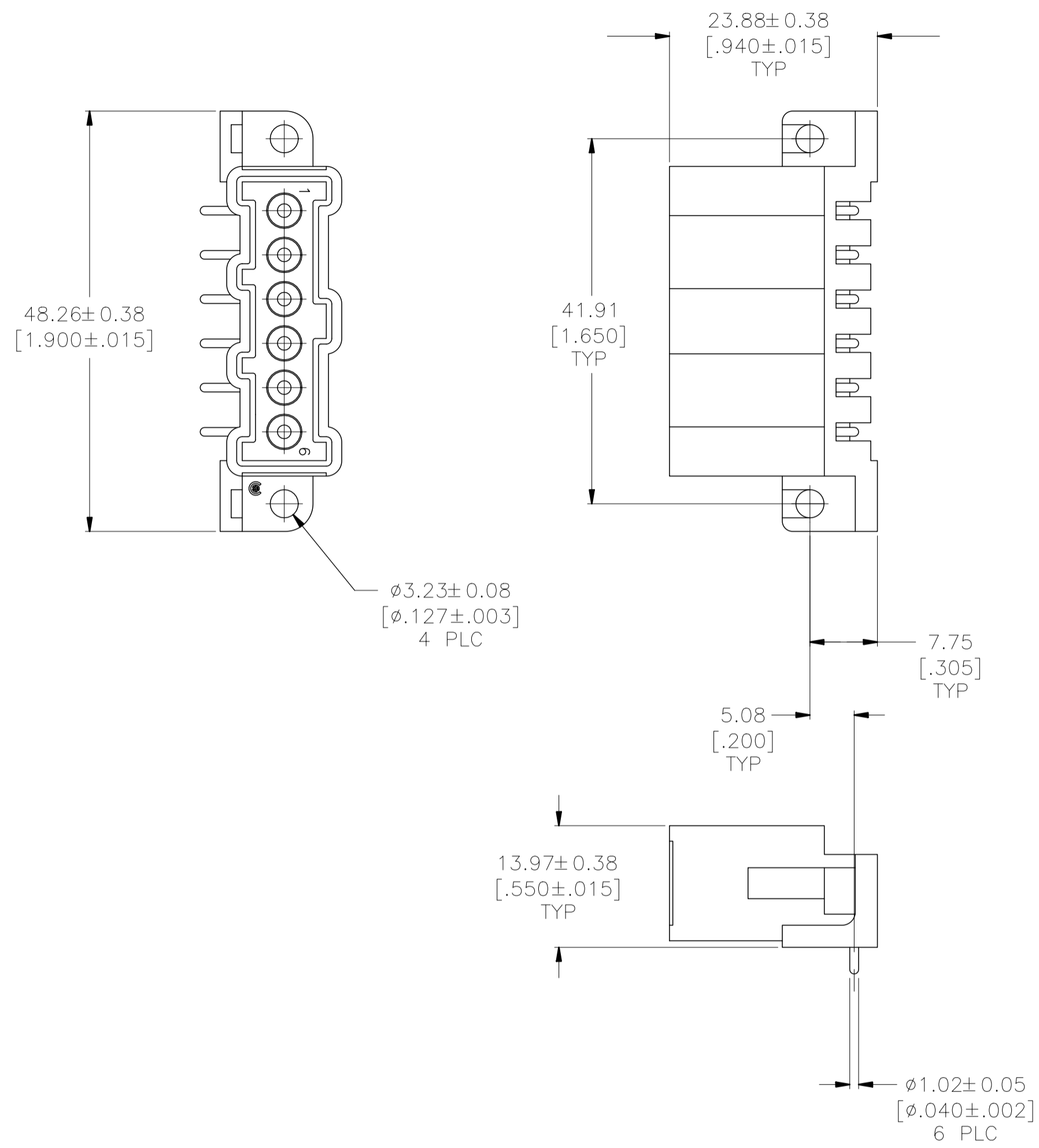


THIS DRAWING IS UNPUBLISHED. RELEASED FOR PUBLICATION
 © COPYRIGHT - TE Connectivity ALL RIGHTS RESERVED.

REVISIONS					
P	LTR	DESCRIPTION	DATE	DWN	APVD
	K	REVISED PER ECO-20-001083	30JAN2020	SM	MZ
	G1	REVISED PER ECO-09-021826	12JAN10	KK	AEG
	H	REVISED PER ECO-17-011181	03AUG2017	RS	MZ
	J	REVISED PER ECO-18-000443	30JAN2018	RS	MZ



- ① HOUSING MATERIAL: PA66, BLACK, UL 94 V-0 RATED.
- ② BRASS PER ASTM B36.
- ③ $3.81 \mu\text{m}$ [$.000150$] MIN TIN-LEAD OVER $2.54 \mu\text{m}$ [$.000100$] MIN COPPER.
- ④ $3.81 \mu\text{m}$ [$.000150$] MIN TIN OVER $2.54 \mu\text{m}$ [$.000100$] MIN COPPER.
- ⑤ OBSOLETE PARTS: OBSOLETE CIS STREAMLINING PER D.RENAUD/D.SINISI

⑤	OBSOLETE	④	12.83	[.505]	-208116-5-
		④	3.05	[.120]	208116-4
	OBSOLETE	③	12.83	[.505]	208116-3
	OBSOLETE	③	3.05	[.120]	208116-1
			CONTACT FINISH	L	PART NUMBER

THIS DRAWING IS A CONTROLLED DOCUMENT.		DWN J.MCCLINTON 11/06/91	TE Connectivity		
DIMENSIONS: mm [INCHES]		CHK R. STONE 11-8-91			
		TOLERANCES UNLESS OTHERWISE SPECIFIED:	NAME		
0 PLC ± - 1 PLC ± - 2 PLC ± 0.25[.010] 3 PLC ± - 4 PLC ± - ANGLES ± -		APVD -	PRODUCT SPEC		
MATERIAL HOUSING: ① CONTACTS: ②		FINISH CONTACTS: SEE TABLE	APPLICATION SPEC		
		WEIGHT -	SIZE A2	CAGE CODE 00779	DRAWING NO C-208116
		CUSTOMER DRAWING		SCALE 2:1	SHEET 1 OF 1
				RESTRICTED TO -	REV K

X-ON Electronics

Largest Supplier of Electrical and Electronic Components

Click to view similar products for [Headers & Wire Housings](#) category:

Click to view products by [TE Connectivity](#) manufacturer:

Other Similar products are found below :

[95000-104TRLF](#) [10135584-644402LF](#) [DF62W-EP2022PCA](#) [95000-106TRLF](#) [DF62W-2022SCA](#) [DF62W-EP2022PC](#) [2203348](#) [DF62W-2022SC](#) [1084018](#) [1029039](#) [1084017](#) [802-10-012-10-002000](#) [1112640](#) [1112639](#) [000-34000](#) [0009482033](#) [0009507031](#) [57102-S06-03LF](#) [57202-S52-04LF](#) [PCN6-15S-2.5E](#) [0039019024](#) [58102-G61-06LF](#) [582553-1](#) [0009508121](#) [0050291907](#) [018731A](#) [LY20-4P-DT1-P1E-BR](#) [02.125.8002.8](#) [60101931](#) [60598-1 \(Cut Strip\)](#) [M1625-3R/100](#) [61062-3](#) [61082-181009](#) [636-1427](#) [638009-1](#) [641938-9](#) [641991-4](#) [644168-1](#) [647662-1](#) [65039-019ELF](#) [65817-002LF](#) [65817-015LF](#) [65863-015LF](#) [66207-023LF](#) [67016-026LF](#) [67046-001LF](#) [67095-007LF](#) [68002-116](#) [68016-236H](#) [68648-049](#)