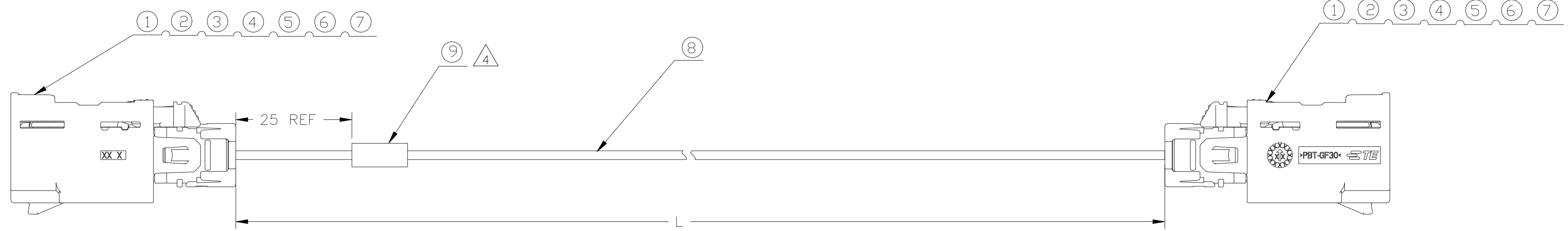


REVISIONS				
P	LTR	DESCRIPTION	DATE	APVD
A	GTP		11JUN2023	ED WH



CONN 1  
FEMALE STR  
CODE Z WATER BLUE  
WITH CLIP SLOT  
SEALED

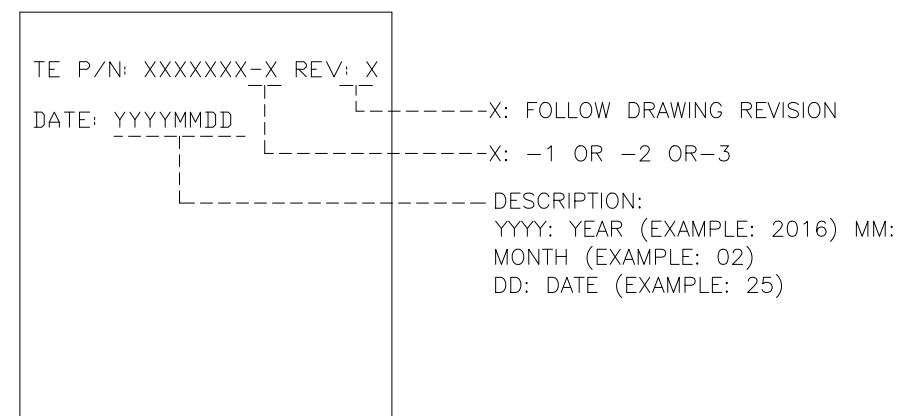
CONN 2  
FEMALE STR  
CODE Z WATER BLUE  
WITH CLIP SLOT  
SEALED

TE P/N	L(mm)	REV
2081390-1	300+10/-0	A
2081390-2	600+10/-0	A
2081390-3	1000+15/-0	A
2081390-4	2000+20/-0	A
2081390-5	3000+30/-0	A
2081390-6	5000+40/-0	A

NOTES:

- ALL RF CONNECTORS MUST BE ASSEMBLED PER MANUFACTURER'S APPLICATION SPECIFICATIONS WITH FOLLOWING [SC]:  
1.1: SOCKET CONTACTS CRIMP HEIGHT  
1.2: FERRULES' CRIMP HEIGHT  
1.3: CONNECTORS TO COAX CABLE RETENTION FORCE
- 100% IN-PROCESS ELECTRICAL TEST:  
2.1: DC CONTINUITY, FOR CENTER AND OUTER CONDUCTORS, POINT TO POINT  
2.2: SHORT CIRCUITS;
- TEMPERATURE RANGE: -40°C TO 85°C

4. LABEL CONTENT:



AR	MM	DESCRIPTION	QTY	ITEM
		TEAR TAPE FOR PACKAGING	10	
1	PC	ID LABEL	9	
AR	MM	DAR462 COAXIAL CABLE	8	
2	PC	SEAL COVER	7	
2	PC	WIRE SEAL	6	
2	PC	OUTER FERRULE	5	
2	PC	SUBASSY FEMALE	4	
2	PC	CENTER CONTACT FEMALE	3	
2	PC	INNER HOUSING SUBASSEMBLY	2	
2	PC	FAKRA HSG FEMALE 1P CODE Z	1	
-X	U/M	DESCRIPTION		ITEM

THIS DRAWING IS A CONTROLLED DOCUMENT.		DWN Z.Z.ZHONG 23FEB2023	TE Connectivity	
DIMENSIONS: mm		CHK ERIC.DAI 23FEB2023	NAME	
TOLERANCES UNLESS OTHERWISE SPECIFIED:		APVD WENKE.HE 23FEB2023	PRODUCT SPEC	
0 PLC ± -		APPLICATION SPEC		
1 PLC ± -		SIZE		
2 PLC ± -		CAGE CODE		
3 PLC ± -		DRAWING NO		
4 PLC ± -		RESTRICTED TO		
ANGLES ± -		A2 00779 C=2081390		
MATERIAL		WEIGHT		
FINISH		SCALE		
		SHEET 1 of 1		
		REV A		

## X-ON Electronics

Largest Supplier of Electrical and Electronic Components

*Click to view similar products for [RF Cable Assemblies](#) category:*

*Click to view products by [TE Connectivity](#) manufacturer:*

Other Similar products are found below :

[73-6352-10](#) [73-6353-3](#) [73-6364-6](#) [R285001001](#) [R288940004](#) [145111-05-12.00](#) [1661-C-24](#) [1801171170914KE](#) [24P104C24J1-012](#)  
[24P104C24P1-018](#) [24P204C24J1-003](#) [FCB-3030-ALT](#) [21117-046](#) [21117-050](#) [24P103C24P2-003](#) [PTWY-24-78](#) [R284008001](#) [R285001021](#)  
[R288940003](#) [R288940034](#) [MDM-21PH006P-A174](#) [4814-BB-24](#) [5260-72](#) [DLP-COAX1](#) [4814-K-48](#) [115101-09-06.00](#) [MXHT83QE3000](#) [73-6351-25](#) [73-6352-3](#) [73-6353-25](#) [81-6201-1600](#) [GD0BQ0BQ024.0](#) [1-3636-600-5210](#) [R288940009](#) [R288940002](#) [PT82NSMA](#) [73-6353-10](#)  
[Minibend-9](#) [Minibend-4](#) [BNC TO SMA Cable](#) [MIKROE-274](#) [Microbend MTR-11](#) [PT815NN](#) [MF53/1x8A\\_21MXP/11SK/305](#) [Minibend-3](#)  
[Minibend-11](#) [Minibend-6](#) [Minibend-2.5](#) [Minibend-13](#) [Minibend-3.5](#)