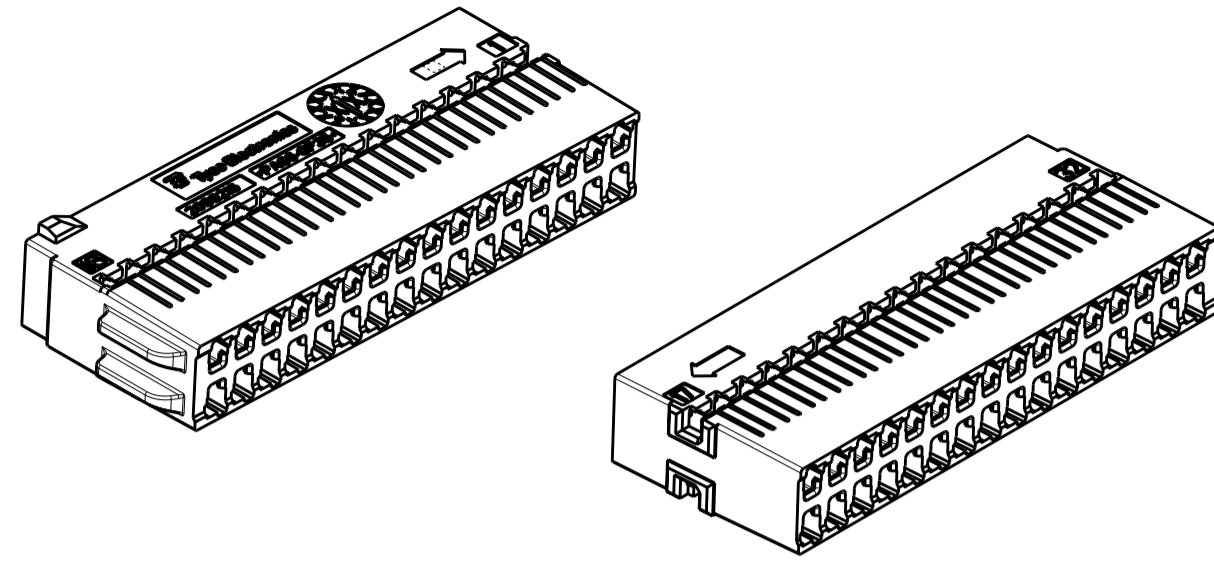


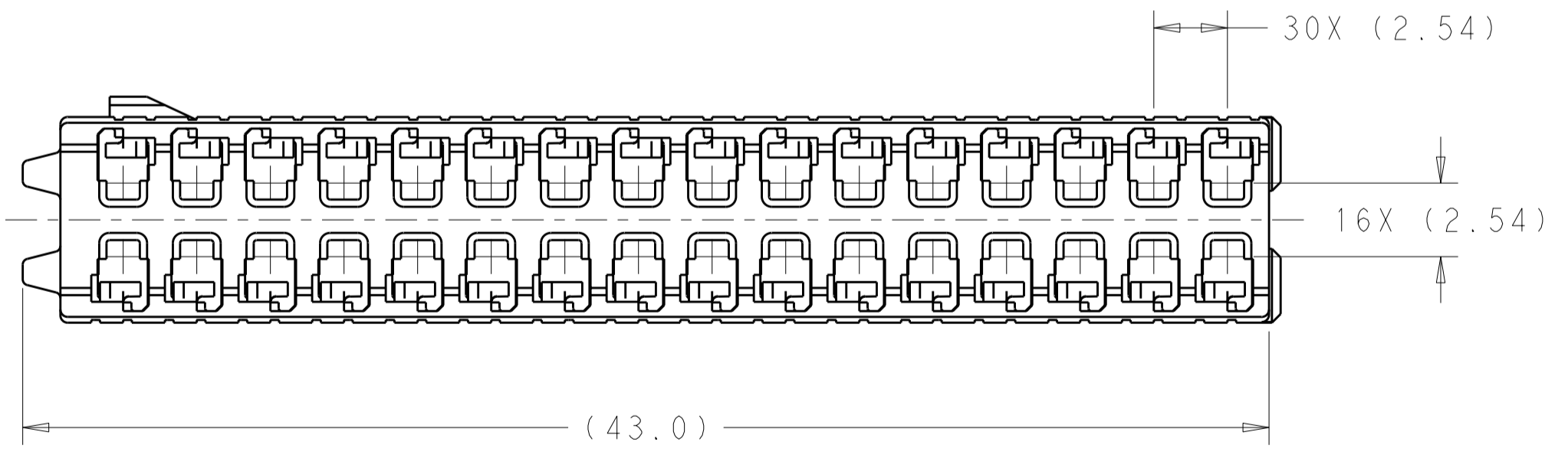
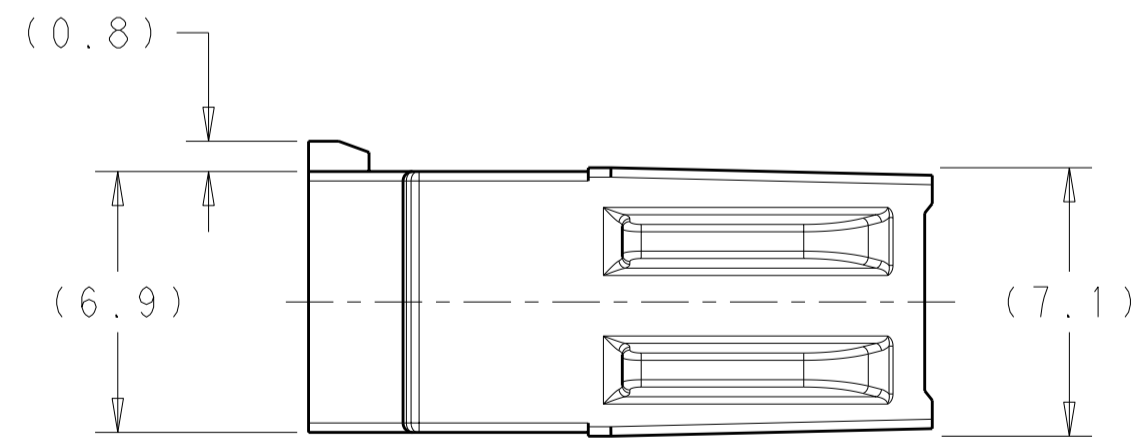
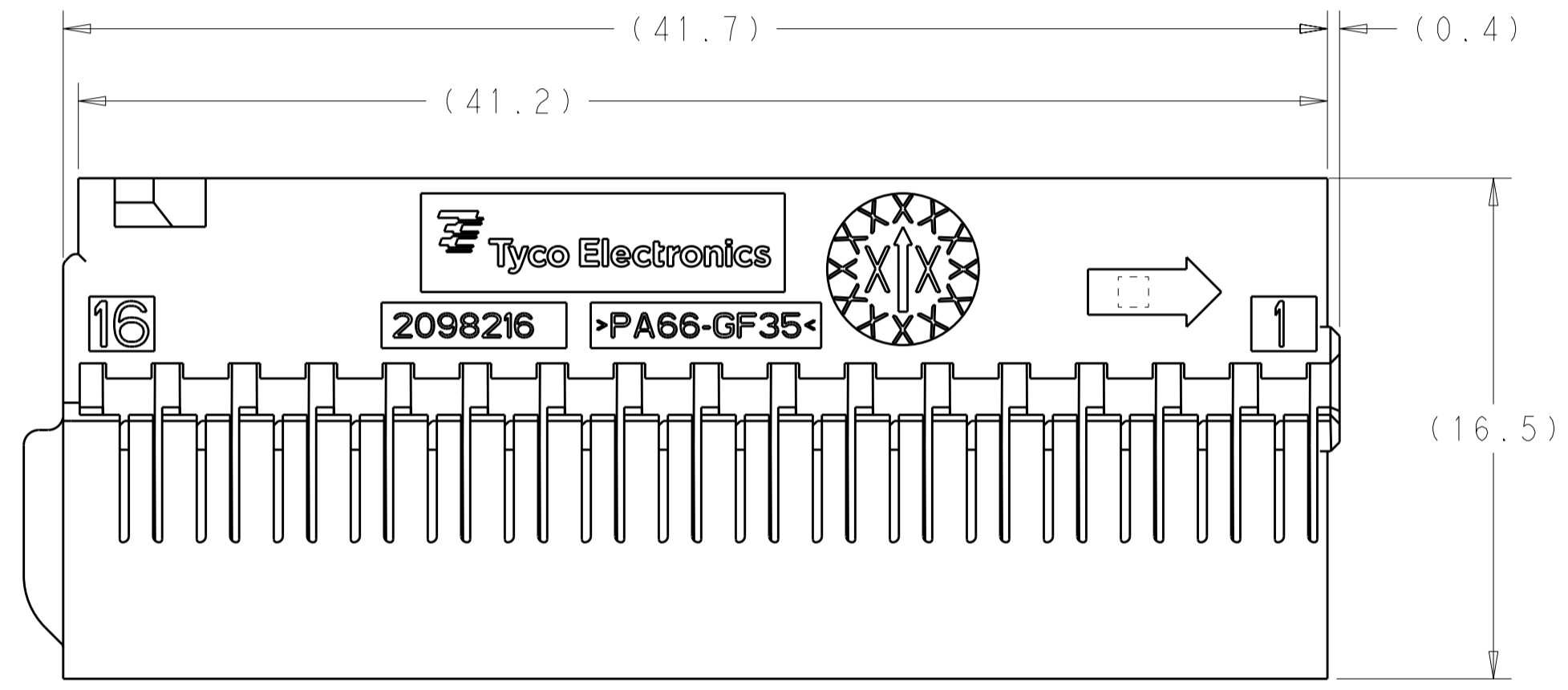
THIS DRAWING IS UNPUBLISHED. RELEASED FOR PUBLICATION 20  
 © COPYRIGHT 20 BY - ALL RIGHTS RESERVED.

LOC	DIST	REVISIONS			
P	LTR	DESCRIPTION	DATE	DWN	APVD
IN	00	A	RELEASED PER ECO-11-017336	24AUG2011	DD GM



ISOMETRIC VIEW  
SCALE 4:1

- 1. NYLON 6/6, COLOR: BLACK, 35% GLASS FILLED.
- 2. CONTACTS SOLD SEPARATELY. SEE DRAWING NUMBER 1456574 FOR TERMINATION AND REELING OPTIONS.



2098216-1  
PART NUMBER

THIS DRAWING IS A CONTROLLED DOCUMENT.		DWN S. VINAY 23MAR2010	<b>STE</b> TE Connectivity	
DIMENSIONS: mm		CHK GALEN MARTIN 23MAR2010		
TOLERANCES UNLESS OTHERWISE SPECIFIED:		APVD GALEN MARTIN 23MAR2010	NAME CARRIER, 32 POSITION, 0.64mm GENERATION Y CONNECTOR	
0 PLC ±-		PRODUCT SPEC -	SIZE A200779 C-2098216	
1 PLC ±0.3		APPLICATION SPEC -	RESTRICTED TO -	
2 PLC ±0.20		WEIGHT -	SCALE 5:1 SHEET 1 OF 1 REV A	
3 PLC ±-		CUSTOMER DRAWING		
4 PLC ±-				
ANGLES ±1°				
FINISH				

## X-ON Electronics

Largest Supplier of Electrical and Electronic Components

*Click to view similar products for [Automotive Connectors](#) category:*

*Click to view products by [TE Connectivity](#) manufacturer:*

Other Similar products are found below :

[003-018-000](#) [60403001](#) [60993906-B](#) [M902-2131](#) [M902-2161](#) [M902-2344](#) [72.330.1035.1](#) [73.353.4028.0](#) [F119300-B](#) [F166900](#) [F258300-B](#)  
[F358300-B](#) [F407400](#) [F444110](#) [F487000](#) [F509500B-B](#) [827153-1](#) [8N1515-32-24P](#) [9-1326729-8](#) [925474-1](#) [928905-1](#) [964562-4](#) [968782-1](#)  
[GT17SA-8DS-HU](#) [98891-1012](#) [98947-1016](#) [12004147](#) [12004475-L](#) [12010290](#) [12010309-B](#) [12015454](#) [12020219-B](#) [12041318-B](#) [12052225-](#)  
[L](#) [12052466](#) [12064869](#) [12004327-B](#) [12015308](#) [12015384](#) [12015909](#) [1-21030-1](#) [12041254](#) [12041318](#) [12047946-B](#) [12047957](#) [12047957-L](#)  
[12059473](#) [12066261](#) [12110546](#) [12110546-B](#)