

SAFETY ORGANIZATION(S):

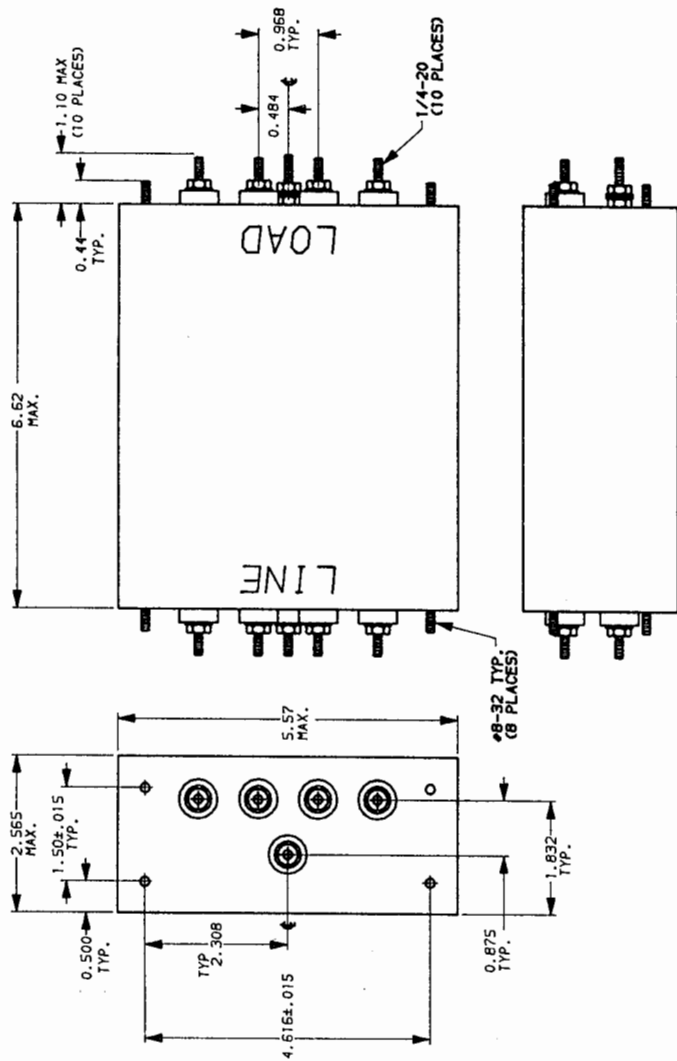
THIS FILTER HAS BEEN FORMALLY RECOGNIZED, CERTIFIED OR APPROVED BY THE LISTED AGENCY. THEREFORE, ALL TEST/REQUIREMENTS SPECIFIED IN THE LATEST REVISION OF THE FOLLOWING AGENCY STANDARDS HAVE BEEN MET:

- UL RECOGNIZED
 CSA CERTIFIED
 OPERATING SPECIFICATIONS:
 LINE VOLTAGE/CURRENT:
 UL 1283
 CSA 22.2 NO. 0, 0.4, 8
 20 OR 30 AMP, 250VAC PHASE TO NEUTRAL/GND
 20 OR 30 AMP, 440VAC PHASE TO PHASE
 50-60Hz
- LINE FREQUENCY:
 MAX. LEAKAGE CURRENT, EACH
 LINE TO GROUND
 1.4 ma @ 120 V 60 Hz
 3.4 ma @ 250 V 50 Hz
- OPERATING AMBIENT TEMP. RANGE:
 -10°C TO +40°C @ RATED CURRENT, I_r
- IN AN AMBIENT, I_o, HIGHER THAN 40°C, THE MAXIMUM OPERATING CURRENT, I_o, IS AS FOLLOWS:

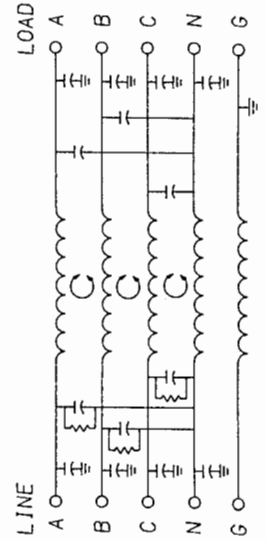
$$I_o = I_r \sqrt{\frac{85 - I_o}{45}}$$
- RELIABILITY SPECIFICATIONS:
 STORAGE TEMPERATURE:
 HUMIDITY:
 -25°C to +85°C
 21 DAYS @ 40°C 95% RH

- TEST SPECIFICATIONS:
 INDUCTANCE:
 CAPACITANCE: (MEASURED @ 1 KHZ, 0.25 VAC MAX., 25°C ±1°C)
 PHASE/NEUTRAL TO GROUND:
 PHASE TO NEUTRAL:
 DISCHARGE RESISTOR:
 PHASE/NEUTRAL TO GROUND AND
 PHASE TO PHASE INSULATION
 RESISTANCE:
 (W/O DISCHARGE RESISTOR)
 20A = 4.44mH NOMINAL 30A = 1.97 mH NOMINAL
 .261mH NOMINAL (GND CHOKE)
 .018uF ±20%
 3.29uF ±20%
 110 KΩ
 5000 MΩ (MIN) AT 100 VDC
 20°C AND 50% RH

RECOMMENDED RECEIVING INSPECTION HIPOIT:
 PHASE TO GROUND 1500 VAC FOR 1 MINUTE
 NEUTRAL TO GROUND 1500 VAC FOR 1 MINUTE
 PHASE TO NEUTRAL 1450 VDC FOR 1 MINUTE
 FILTER APPROVAL:
 THE BEST WAY TO SELECT AND QUALIFY A FILTER IS FOR YOUR ENGINEERING TO TEST THE UNIT IN YOUR EQUIPMENT.



NOTE: UNLESS OTHERWISE SPECIFIED, TOLERANCE TO BE ±.045



50Ω - 50Ω (MINIMUM) INSERTION LOSS	
FREQUENCY MHz	0.05 0.1 0.5 1 5 10 30
COMMON	20A 22 39 55 56 65 65 54
dB	30A 15 30 55 55 61 63 50
DIFF.	20A 20 50 65 65 60 52
dB	30A 5 43 65 65 59 48

This document is proprietary to CORCOM INC. and is not to be reproduced nor used for manufacturing purposes except on CORCOM's order or prior written consent.

TOLERANCE EXCEPT AS NOTED
 DECIMAL: .XXX .XX .X ANGLES ± 1°
 ENGLISH: — METRIC: ± —
 MATERIAL: AS SUPPLIED
 FINISH:



POWER LINE FILTER

SCALE	1:2	DRG. NO.	20AYPEC.01
DATE	5-9-88	REV.	
BY	TDL	ORIGINATOR	20AYPEC & 30AYPEC.01
CHK	CW		

X-ON Electronics

Largest Supplier of Electrical and Electronic Components

Click to view similar products for [Power Line Filters](#) category:

Click to view products by [TE Connectivity](#) manufacturer:

Other Similar products are found below :

[6609019-3](#) [6609026-5](#) [6609030-6](#) [6609973-2](#) [D30A](#) [7-1609090-5](#) [F2810](#) [F4456A](#) [F7382Z](#) [F7863Z](#) [FAHAV3100ZC000](#) [806276](#) [FN2020B-1-06](#) [FN2080B-10-06](#) [FN2410H-32-33](#) [FP144](#) [FS4153-20-06](#) [FS4353-500-99](#) [12-MMB-030-11-D](#) [DB4-393](#) [15811T200](#) [20B1](#) [LC630](#) [2B1](#) [1609080-2](#) [1609993-8](#) [1-6609070-1](#) [F1100AA02](#) [F1150CC10](#) [F1500CA10](#) [F1500CA15](#) [F4041Z](#) [F7585E](#) [1B1](#) [FN2070A-16-06](#) [FN2090A-20-06](#) [FN2090B-12-06](#) [FN2090Z-1-06](#) [FN2410H-25-33](#) [FN2410H-60-34](#) [FN2410H-8-44](#) [FN2412H-8-44](#) [FN323B-6-01](#) [FN3258H-130-35](#) [FN610R-3-06](#) [20EHQ7](#) [20EHZ7](#) [20K1](#) [30B6](#) [3K1](#)