

APPROVE BY/DATE  
 C. Weston 5-26-92  
 1  
 REV

**SAFETY ORGANIZATION(S).**

THIS FILTER HAS BEEN FORMALLY RECOGNIZED, CERTIFIED OR APPROVED BY THE LISTED AGENCY. THEREFORE, ALL TEST/REQUIREMENTS SPECIFIED IN THE LATEST REVISION OF THE FOLLOWING AGENCY STANDARDS HAVE BEEN MET.

UL 1283  
 CSA 22.2, NO.0.0.4.8  
 VDE APPROVED (PENDING)

**OPERATING SPECIFICATIONS.**

LINE VOLTAGE/CURRENT:  
 20 AMP., 120/250 VAC  
 16 AMP./40°C, 250 VAC  
 50-60HZ

**RELIABILITY SPECIFICATIONS.**

MAX. LEAKAGE CURRENT, EACH LINE TO GROUND  
 .25 mA @ 120V 60 Hz  
 .48 mA @ 250V 50 Hz  
 OPERATING AMBIENT TEMP. RANGE:  
 -10°C TO +40°C @ RATED CURRENT, I<sub>r</sub>  
 IN AN AMBIENT, T<sub>a</sub>, HIGHER THAN 40°C, THE MAXIMUM OPERATING CURRENT, I<sub>o</sub>, IS AS FOLLOWS:  
 $I_o = I_r \sqrt{\frac{85-T_a}{45}}$

**TEST SPECIFICATIONS.**

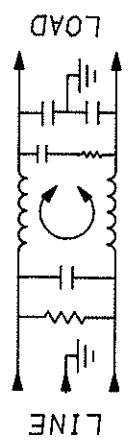
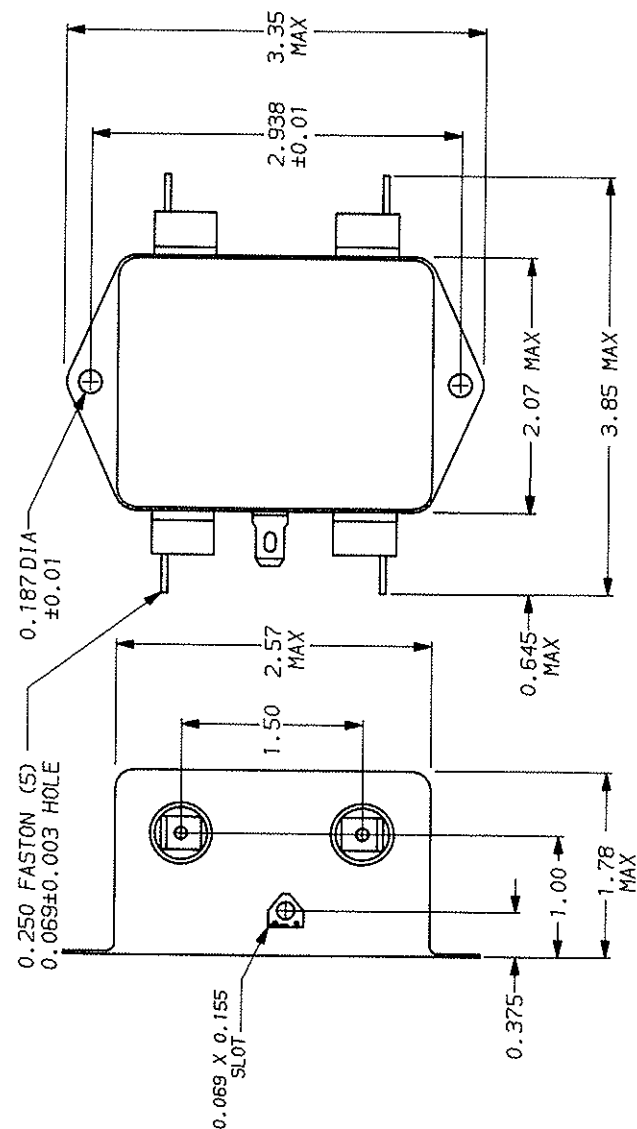
INDUCTANCE:  
 .54 mH NOMINAL  
 CAPACITANCE: (MEASURED @ 1 KHZ, 0.25 VAC MAX., 25°C ±1°C)  
 LINE TO GROUND:  
 .003µF ±20%  
 LINE TO LINE:  
 1.08µF ±20%  
 DISCHARGE RESISTOR  
 330KΩ  
 LINE/GROUND AND LINE/LINE INSULATION RESISTANCE  
 6000 MΩ (MIN) AT 100 VDC  
 20°C AND 50% RH

**RECOMMENDED RECEIVING INSPECTION HIPOUT.**

LINES TO GROUND:  
 2250 VDC FOR 1 MINUTE  
 LINE TO LINE:  
 1450 VDC FOR 1 MINUTE

**FILTER APPROVAL.**

THE BEST WAY TO SELECT AND QUALIFY A FILTER IS FOR YOUR ENGINEERING TO TEST THE UNIT IN YOUR EQUIPMENT.



FREQUENCY MHZ	50Ω - 50Ω MINIMUM INSERTION LOSS							
	.15	.5	1	2	5	10	20	30
COMMON								
dB	10	20	25	30	34	40	46	50
DIFF.	20	43	55	62	65	60	55	55

This document is proprietary to CORCOM INC. and is not to be reproduced nor used for manufacturing purposes except on CORCOM's order or prior written consent.



POWER LINE FILTER

SCALE	DATE	DRG. NO.	REV.
NTS	11-5-90	20EDK1-01	01
AW. BY	CFW	CFW	

## X-ON Electronics

Largest Supplier of Electrical and Electronic Components

*Click to view similar products for [Power Line Filters](#) category:*

*Click to view products by [TE Connectivity](#) manufacturer:*

Other Similar products are found below :

[6609019-3](#) [6609026-5](#) [6609030-6](#) [6609973-2](#) [D30A](#) [7-1609090-5](#) [F2810](#) [F4456A](#) [F7382Z](#) [F7863Z](#) [FAHAV3100ZC000](#) [806276](#) [FN2020B-1-06](#) [FN2080B-10-06](#) [FN2410H-32-33](#) [FN2410H-80-34](#) [FP144](#) [FS4153-20-06](#) [FS4353-500-99](#) [12-MMB-030-11-D](#) [DB4-393](#) [15811T200](#) [20B1](#) [LC630](#) [2B1](#) [1609080-2](#) [1609993-8](#) [1-6609070-1](#) [F1100AA02](#) [F1150CC10](#) [F1500CA10](#) [F1500CA15](#) [F4041Z](#) [F7585E](#) [1B1](#) [FN2070A-16-06](#) [FN2090A-20-06](#) [FN2090B-12-06](#) [FN2090Z-1-06](#) [FN2410H-25-33](#) [FN2410H-60-34](#) [FN2410H-8-44](#) [FN2412H-8-44](#) [FN323B-6-01](#) [FN3258H-130-35](#) [FN610R-3-06](#) [20EHQ7](#) [20EHZ7](#) [20K1](#) [30B6](#)