

SAFETY ORGANIZATION(S):

THIS FILTER HAS BEEN FORMALLY RECOGNIZED, CERTIFIED OR APPROVED BY THE LISTED AGENCY. THEREFORE, ALL TEST/REQUIREMENTS SPECIFIED IN THE LATEST REVISION OF THE FOLLOWING AGENCY STANDARDS HAVE BEEN MET:

- UL 1283
- CSA 22.2, NO. 0, 0.4, 8
- VDE 565-3

OPERATING SPECIFICATIONS:

LINE VOLTAGE/CURRENT:

- 20 AMP., 120/250 VAC
- 16 AMP./40°C, 250 VAC
- 50-60Hz
- 40°C

LINE FREQUENCY:

MAX. CASE RISE θ RATED CURRENT:

MAX. LEAKAGE CURRENT, EACH

LINE TO GROUND

OPERATING AMBIENT TEMP. RANGE:

IN AN AMBIENT, T_a , HIGHER THAN 40°C, THE MAXIMUM OPERATING CURRENT, I_o , IS AS FOLLOWS:

$$I_o = I_r \sqrt{\frac{85 - T_a}{45}}$$

RELIABILITY SPECIFICATIONS:

STORAGE TEMPERATURE:

HUMIDITY:

CURRENT OVERLOAD TEST:

-40°C TO +85°C

21 DAYS @ 40°C 95% RH

6 TIMES RATED CURRENT FOR 8 SECONDS

TEST SPECIFICATIONS:

INDUCTANCE:

CAPACITANCE: (MEASURED @ 1 KHz, 0.25 VAC MAX., 25°C \pm 1°C)

LINE TO GROUND:

LINE TO LINE:

DISCHARGE RESISTOR:

LINE/GROUND AND LINE/LINE

INSULATION RESISTANCE

(W/O DISCHARGE RESISTOR)

.96 mH NOMINAL

.011 μ F \pm 20%

.813 μ F \pm 20%

330 K Ω

6000 M Ω (MIN) AT 100 VDC

20°C AND 50% RH

RECOMMENDED RECEIVING INSPECTION HIPOT:

LINES TO GROUND:

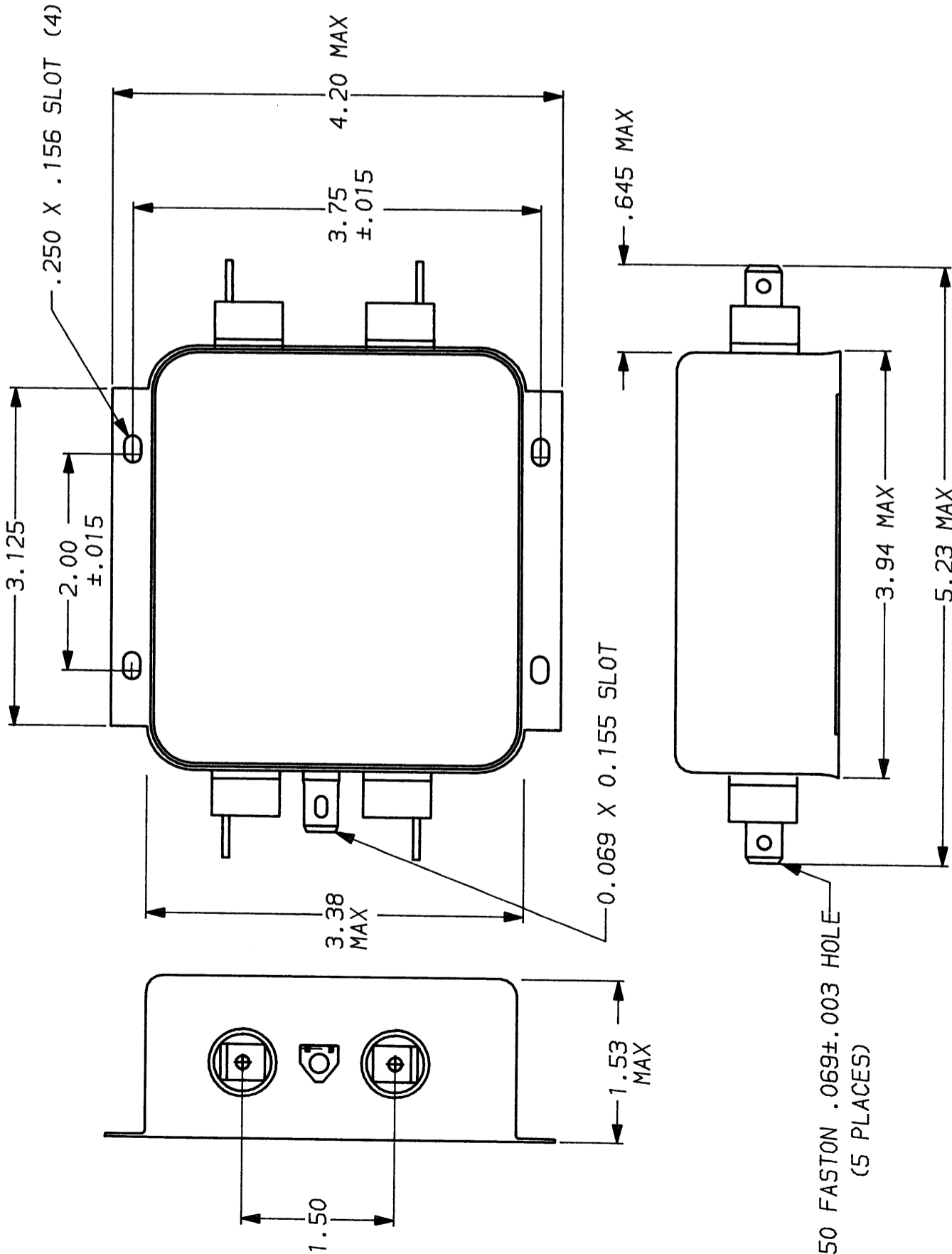
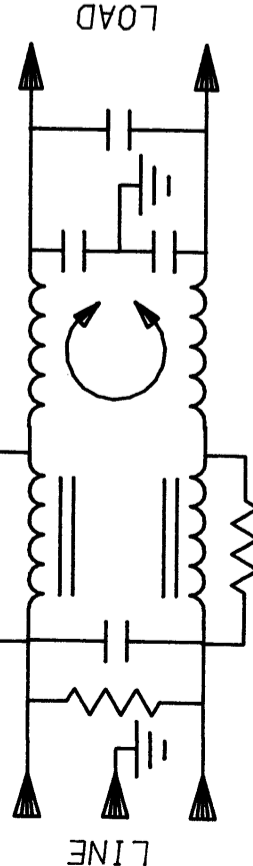
LINE TO LINE:

FILTER APPROVAL:

2250 VDC FOR 1 MINUTE

1450 VDC FOR 1 MINUTE

THE BEST WAY TO SELECT AND QUALIFY A FILTER IS FOR YOUR ENGINEERING TO TEST THE UNIT IN YOUR EQUIPMENT.



50 Ω - 50 Ω (MINIMUM)		INSERTION LOSS							
FREQUENCY MHZ	15	.5	1	2	5	10	20	30	
COMMON dB	15	30	38	38	32	43	42	40	
DIFF. dB	40	65	65	65	65	50	48	48	

This document is proprietary to CORCOM INC. and is not to be reproduced nor used for manufacturing purposes except on CORCOM's order or prior written consent.

TOLERANCE EXCEPT AS NOTED
DECIMAL: .XXX .XX .X ANGLES
ENGLISH: \pm .025
METRIC: \pm

MATERIAL:
AS SUPPLIED

FINISH:
AS SUPPLIED

CORCOM
LIBERTYVILLE, IL 60048

POWER LINE FILTER

SCALE	DATE	DRG. NO.	REV.
NTS	9-12-89		
DRW. BY	ORIGINATOR		
TDL	CW		

20VS1.07

X-ON Electronics

Largest Supplier of Electrical and Electronic Components

Click to view similar products for [Power Line Filters](#) category:

Click to view products by [TE Connectivity](#) manufacturer:

Other Similar products are found below :

[6609019-3](#) [6609026-5](#) [6609030-6](#) [6609973-2](#) [D30A](#) [7-1609090-5](#) [F2810](#) [F4456A](#) [F7382Z](#) [F7863Z](#) [FAHAV3100ZC000](#) [806276](#) [FN2020B-1-06](#) [FN2080B-10-06](#) [FN2410H-32-33](#) [FP144](#) [FS4153-20-06](#) [FS4353-500-99](#) [12-MMB-030-11-D](#) [DB4-393](#) [15811T200](#) [20B1](#) [LC630](#) [2B1](#) [1609080-2](#) [1609993-8](#) [1-6609070-1](#) [F1100AA02](#) [F1150CC10](#) [F1500CA10](#) [F1500CA15](#) [F4041Z](#) [F7585E](#) [1B1](#) [FN2070A-16-06](#) [FN2090A-20-06](#) [FN2090B-12-06](#) [FN2090Z-1-06](#) [FN2410H-25-33](#) [FN2410H-60-34](#) [FN2410H-8-44](#) [FN2412H-8-44](#) [FN323B-6-01](#) [FN3258H-130-35](#) [FN610R-3-06](#) [20EHQ7](#) [20EHZ7](#) [20K1](#) [30B6](#) [3K1](#)