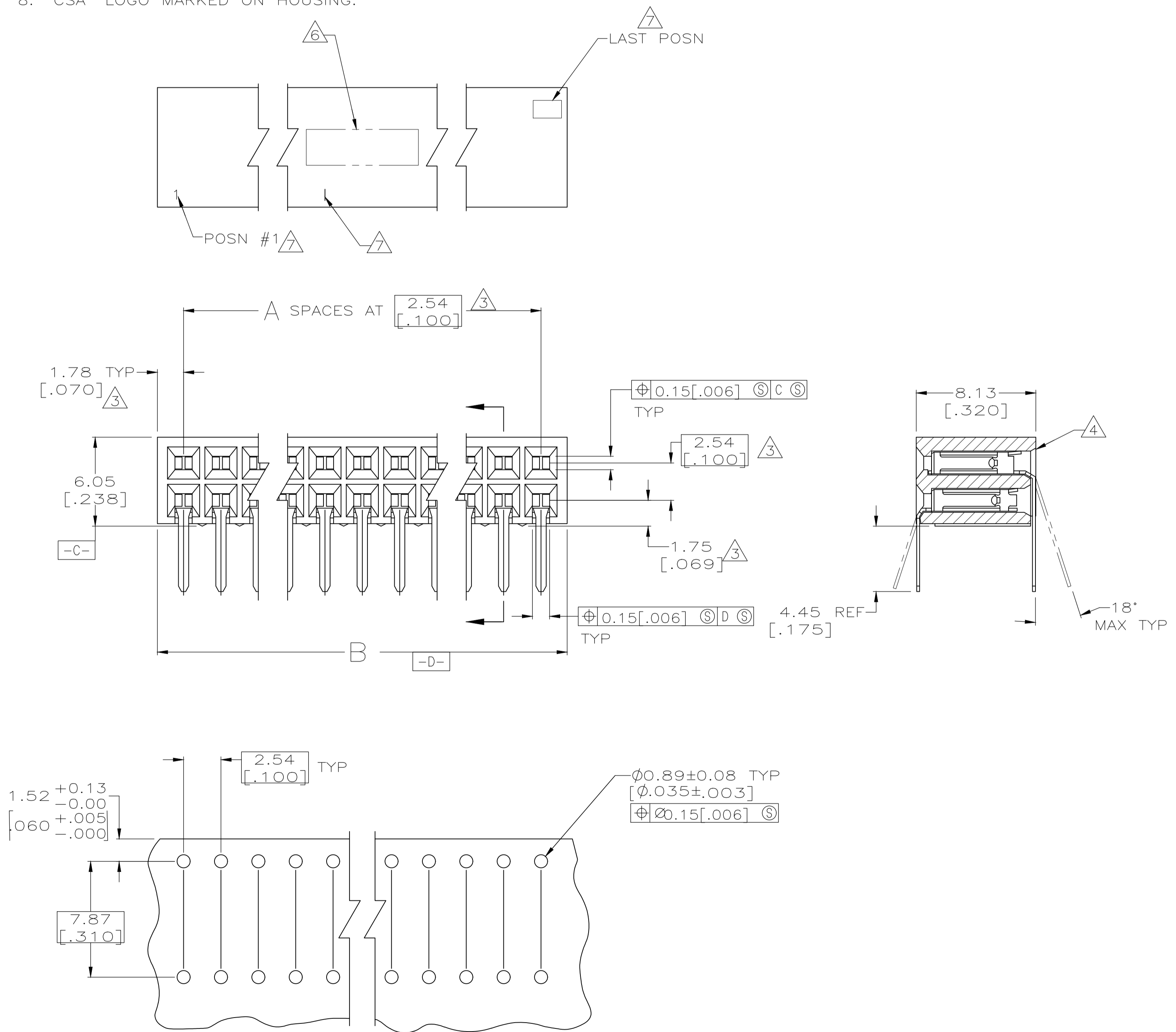


REVISIONS				
REV	DESCRIPTION	DATE	BY	APPV
L	REV PER ECO 16-004482	9-21-18	CT	MS

1. QUALITY CONFORMANCE INSPECTION PER MIL-C-55302 (GROUP A, B & C).
2. PACKAGED PER MIL-C-55302
3. THESE DIMENSIONS PERTAIN TO CAVITY CENTERLINES ONLY, NOT TO CONTACT LOCATIONS.
4. SLOT OPTIONAL AT INDICATED AREA OF HOUSING.
5. CONTACTS: 0.00127[.000050] GOLD OVER 0.000762 TO 0.00381 [0.000030 TO .000150] NICKEL ENTIRE CONTACT.
6. MARK IN APPROXIMATE AREA SHOWN
EXAMPLE: AMP PART NO
DATE CODE MILITARY PART NUMBER
HOUSINGS SMALLER THAN 20 POSITION ARE MARKED AS FOLLOWS:
10 THRU 18 POSN - AMP TRADEMARK AND PART NUMBER
8, 6 AND 4 POSN - AMP TRADEMARK ONLY (MAY BE ROTATED 90° TO FIT).
7. CHARACTERS MARKED IN AREA SHOWN, EVERY FIFTH POSITION MARKED WITH A BAR.
8. "CSA" LOGO MARKED ON HOUSING.



RECOMMENDED PC BOARD HOLE LAYOUT

M55302/128-DR1F	166.12 [6.540]	64	130	6-102278-4	M55302/128-BR1F	84.84 [3.340]	32	66	3-102278-2
M55302/128-DQ1F	163.58 [6.440]	63	128	6-102278-3	M55302/128-BQ1F	82.30 [3.240]	31	64	3-102278-1
M55302/128-DP1F	161.04 [6.340]	62	126	6-102278-2	M55302/128-BP1F	79.76 [3.140]	30	62	3-102278-0
M55302/128-DN1F	158.50 [6.240]	61	124	6-102278-1	M55302/128-BN1F	77.22 [3.040]	29	60	2-102278-9
M55302/128-DM1F	155.96 [6.140]	60	122	6-102278-0	M55302/128-BM1F	74.68 [2.940]	28	58	2-102278-8
M55302/128-DL1F	153.42 [5.940]	59	120	5-102278-9	M55302/128-BL1F	72.14 [2.840]	27	56	2-102278-7
M55302/128-DK1F	150.88 [5.840]	58	118	5-102278-8	M55302/128-BK1F	69.60 [2.740]	26	54	2-102278-6
M55302/128-DJ1F	148.34 [5.740]	57	116	5-102278-7	M55302/128-BJ1F	67.06 [2.640]	25	52	2-102278-5
M55302/128-DH1F	145.80 [5.640]	56	114	5-102278-6	M55302/128-BH1F	64.52 [2.540]	24	50	2-102278-4
M55302/128-DG1F	143.26 [5.540]	55	112	5-102278-5	M55302/128-BG1F	61.98 [2.440]	23	48	2-102278-3
M55302/128-DF1F	140.72 [5.440]	54	110	5-102278-4	M55302/128-BF1F	59.44 [2.340]	22	46	2-102278-2
M55302/128-DE1F	138.18 [5.340]	53	108	5-102278-3	M55302/128-BE1F	56.90 [2.240]	21	44	2-102278-1
M55302/128-DD1F	135.64 [5.240]	52	106	5-102278-2	M55302/128-BD1F	54.36 [2.140]	20	42	2-102278-0
M55302/128-DC1F	133.10 [5.140]	51	104	5-102278-1	M55302/128-BC1F	51.82 [2.040]	19	40	1-102278-9
M55302/128-DB1F	130.56 [5.040]	50	102	5-102278-0	M55302/128-BB1F	49.28 [1.940]	18	38	1-102278-8
M55302/128-DA1F	128.02 [4.940]	49	100	4-102278-9	M55302/128-BA1F	46.74 [1.840]	17	36	1-102278-7
M55302/128-CR1F	125.48 [4.840]	48	98	4-102278-8	M55302/128-AR1F	44.20 [1.740]	16	34	1-102278-6
M55302/128-CQ1F	122.94 [4.740]	47	96	4-102278-7	M55302/128-AQ1F	41.66 [1.640]	15	32	1-102278-5
M55302/128-CP1F	120.40 [4.640]	46	94	4-102278-6	M55302/128-AP1F	39.12 [1.540]	14	30	1-102278-4
M55302/128-CN1F	117.86 [4.540]	45	92	4-102278-5	M55302/128-AN1F	36.58 [1.440]	13	28	1-102278-3
M55302/128-CM1F	115.32 [4.440]	44	90	4-102278-4	M55302/128-AM1F	34.04 [1.340]	12	26	1-102278-2
M55302/128-CL1F	112.78 [4.340]	43	88	4-102278-3	M55302/128-AL1F	31.50 [1.240]	11	24	1-102278-1
M55302/128-CK1F	110.24 [4.240]	42	86	4-102278-2	M55302/128-AK1F	28.96 [1.140]	10	22	1-102278-0
M55302/128-CJ1F	107.70 [4.140]	41	84	4-102278-1	M55302/128-AJ1F	26.42 [1.040]	9	20	102278-9
M55302/128-CH1F	105.16 [4.040]	40	82	4-102278-0	M55302/128-AH1F	23.88 [0.940]	8	18	102278-8
M55302/128-CG1F	102.62 [3.940]	39	80	3-102278-9	M55302/128-AG1F	21.34 [0.840]	7	16	102278-7
M55302/128-CF1F	100.08 [3.840]	38	78	3-102278-8	M55302/128-AF1F	18.80 [0.740]	6	14	102278-6
M55302/128-CE1F	97.54 [3.740]	37	76	3-102278-7	M55302/128-AE1F	16.26 [0.640]	5	12	102278-5
M55302/128-CD1F	95.00 [3.640]	36	74	3-102278-6	M55302/128-AD1F	13.72 [0.540]	4	10	102278-4
M55302/128-CC1F	92.46 [3.540]	35	72	3-102278-5	M55302/128-AC1F	11.18 [0.440]	3	8	102278-3
M55302/128-CB1F	89.92 [3.440]	34	70	3-102278-4	M55302/128-AB1F	8.64 [0.340]	2	6	102278-2
M55302/128-CA1F	87.38 [3.340]	33	68	3-102278-3	M55302/128-AA1F	6.10 [0.240]	1	4	102278-1
MILITARY PART NUMBER	B	A	NO OF POSN	PART NUMBER	MILITARY PART NUMBER	B	A	NO OF POSN	PART NUMBER

THIS DRAWING IS A CONTROLLED DOCUMENT. UNLESS OTHERWISE SPECIFIED, DIMENSIONS ARE IN INCHES. TOLERANCES UNLESS OTHERWISE SPECIFIED: 0.125 ± .005, 0.062 ± .002, 0.031 ± .001, 0.015 ± .0005, 0.007 ± .0002, 0.003 ± .0001, 0.001 ± .00005, 0.0005 ± .00002, 0.0002 ± .00001, 0.0001 ± .000005, 0.00005 ± .000002, 0.00002 ± .000001, 0.00001 ± .0000005, 0.000005 ± .0000002, 0.000002 ± .0000001, 0.000001 ± .00000005, 0.0000005 ± .00000002, 0.0000002 ± .00000001, 0.0000001 ± .000000005, 0.00000005 ± .000000002, 0.00000002 ± .000000001, 0.00000001 ± .0000000005.

TE Connectivity
HOUSING ASSEMBLY, MOD II, DOUBLE ROW, IN LINE 2.54[.100]
A1 00779 C=102278
SCALE 5:1 SHEET 1 OF 1 REV L

X-ON Electronics

Largest Supplier of Electrical and Electronic Components

Click to view similar products for [Headers & Wire Housings](#) category:

Click to view products by [TE Connectivity](#) manufacturer:

Other Similar products are found below :

[95000-104TRLF](#) [10135584-644402LF](#) [DF62W-EP2022PCA](#) [95000-106TRLF](#) [DF62W-2022SCA](#) [DF62W-EP2022PC](#) [2203348](#) [DF62W-2022SC](#) [1084018](#) [1029039](#) [1084017](#) [802-10-012-10-002000](#) [1112640](#) [1112639](#) [000-34000](#) [0009482033](#) [0009507031](#) [57102-S06-03LF](#) [57202-S52-04LF](#) [PCN6-15S-2.5E](#) [0039019024](#) [58102-G61-06LF](#) [582553-1](#) [0009508121](#) [0050291907](#) [018731A](#) [LY20-4P-DT1-P1E-BR](#) [02.125.8002.8](#) [60101931](#) [60598-1 \(Cut Strip\)](#) [M1625-3R/100](#) [61062-3](#) [61082-181009](#) [636-1427](#) [638009-1](#) [641938-9](#) [641991-4](#) [644168-1](#) [647662-1](#) [65039-019ELF](#) [65817-002LF](#) [65817-015LF](#) [65863-015LF](#) [66207-023LF](#) [67016-026LF](#) [67046-001LF](#) [67095-007LF](#) [68002-116](#) [68016-236H](#) [68648-049](#)