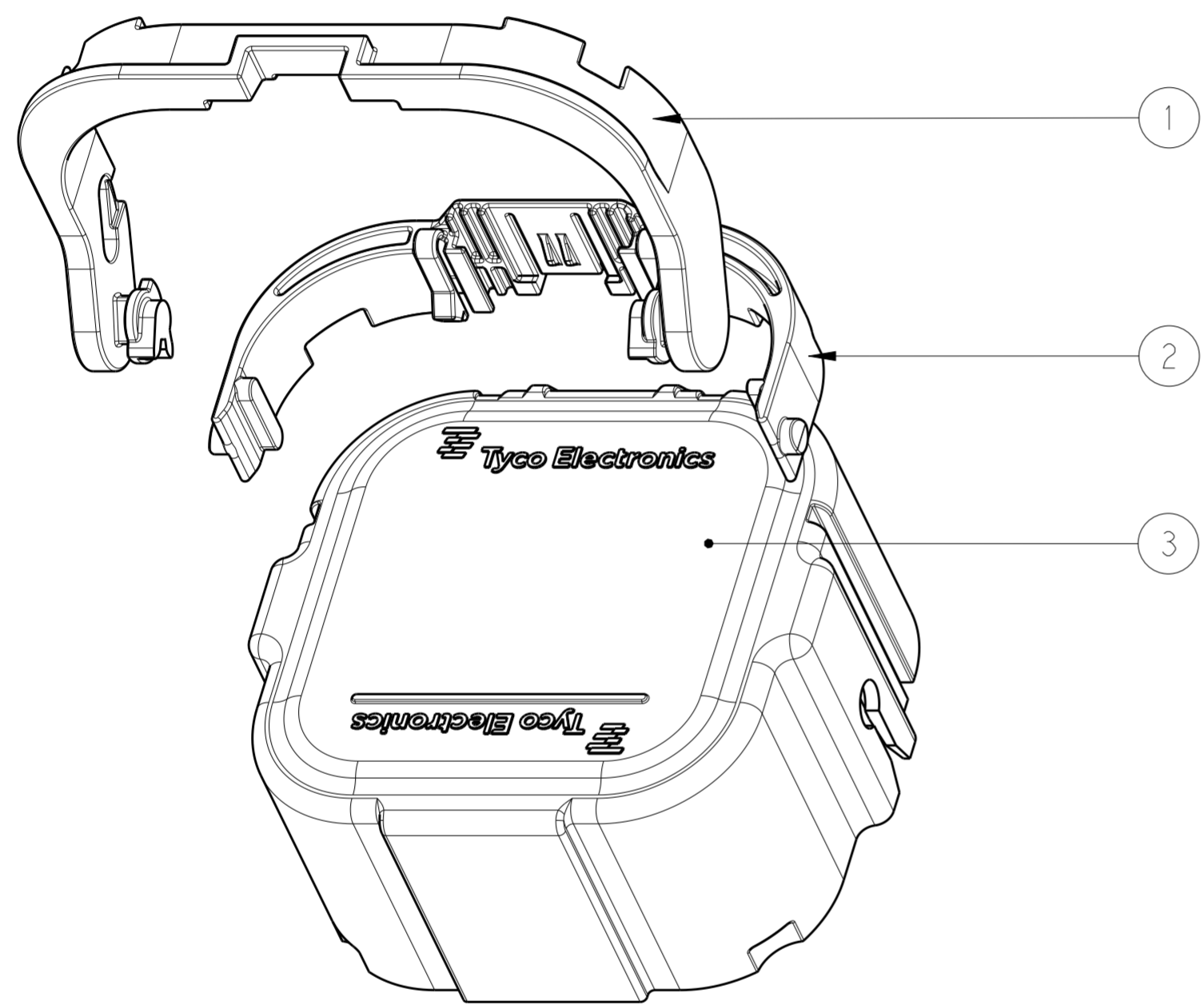
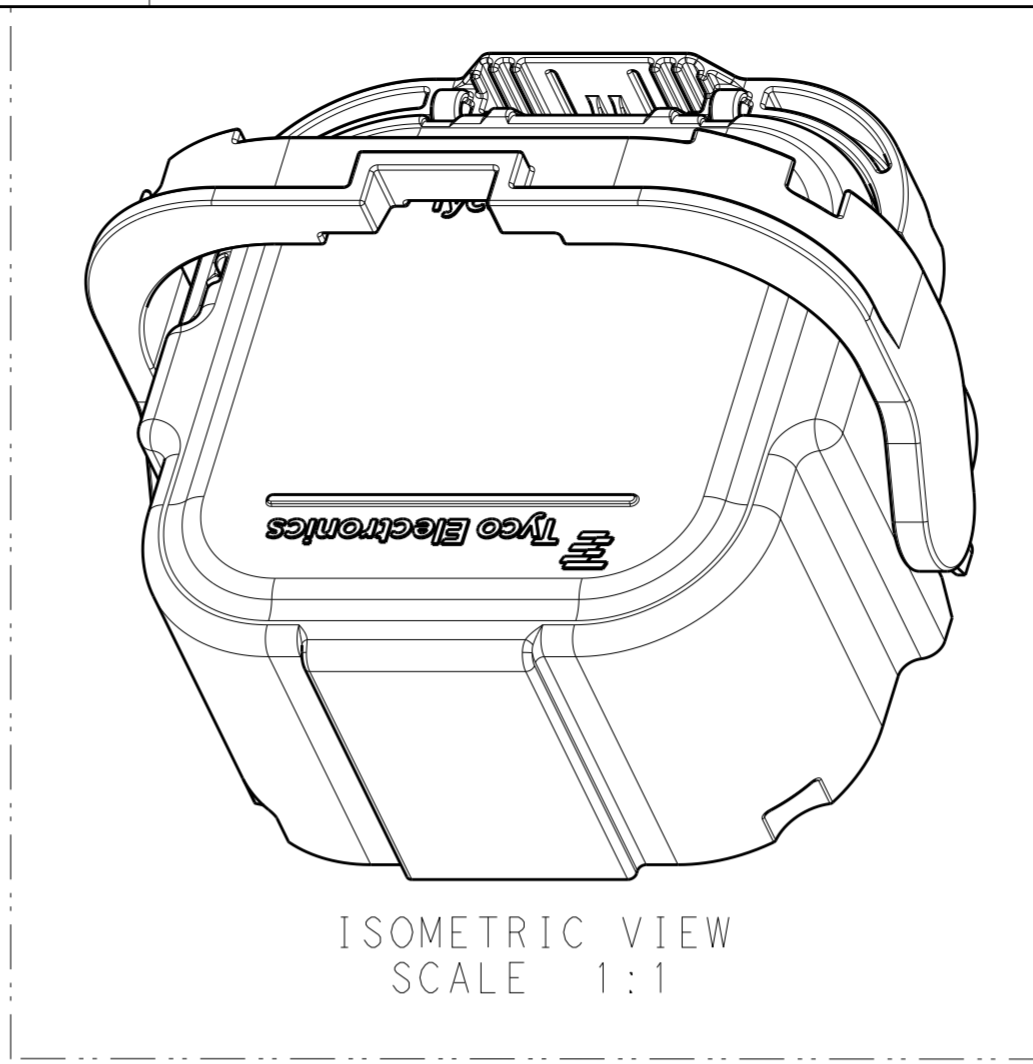


THIS DRAWING IS UNPUBLISHED. RELEASED FOR PUBLICATION 20  
 © COPYRIGHT 20 BY TYCO ELECTRONICS CORPORATION ALL RIGHTS RESERVED.

LOC	DIST	REVISIONS			
P	LTR	DESCRIPTION	DATE	DWN	APVD
		A	INITIAL DRAWING	24MAY2012	DS AG
		A1	ECO-12-015522	27AUG2012	DS AG
		B	REVISED PER ECO-12-020416	20NOV2012	DD YS
		C	REVISED PER ECO-13-011781	22JUL2013	DD JS



QTY REQ PER ASSY	DESCRIPTION	ITEM NO			
-	1	-	1	OUTER HOUSING; YELLOW	3
1	-	1	-	OUTER HOUSING; ORANGE	
1	1	-	-	LEVER RELEASE (NATURAL/OFF-WHITE)	2
-	-	1	1	LEVER RELEASE (BLACK)	
1	1	1	1	LEVER	1
<b>1-2103234-2</b>	<b>1-2103234-1</b>	<b>2103234-2</b>	<b>2103234-1</b>	<b>DESCRIPTION</b>	<b>ITEM NO</b>
<b>QTY REQ PER ASSY</b>				<b>PARTS LIST</b>	

THIS DRAWING IS A CONTROLLED DOCUMENT. DIMENSIONING AND TOLERANCING PER ASME Y14.5M-2009		DWN A BOYER 20OCT2011	<b>STE</b> TE Connectivity	
DIMENSIONS: mm		CHK A BOYER 20OCT2011		
TOLERANCES UNLESS OTHERWISE SPECIFIED:		APVD A GUANCO 24MAY2012	NAME SERVICE CAP ASSEMBLY MANUAL SERVICE DISCONNECT	
0 PLC ± 1 PLC ± 2 PLC ± 3 PLC ± 4 PLC ± ANGLES ± FINISH		PRODUCT SPEC APPLICATION SPEC	SIZE A200779	DRAWING NO C-2103234
MATERIAL	-	WEIGHT 130.64g	RESTRICTED TO -	
Customer Drawing			SCALE 1:1	SHEET 1 OF 1 REV C

## X-ON Electronics

Largest Supplier of Electrical and Electronic Components

*Click to view similar products for [Heavy Duty Power Connectors](#) category:*

*Click to view products by [TE Connectivity](#) manufacturer:*

Other Similar products are found below :

[647757-1](#) [6643411-1](#) [6646058-2](#) [6646137-1](#) [6646138-1](#) [6646479-1](#) [6646608-1](#) [6646786-1](#) [6646940-1](#) [6651091-1](#) [6651525-1](#) [6651529-1](#)  
[6651788-1](#) [696475-1](#) [702-32-01109](#) [703-25-02205](#) [73000005059](#) [73000005642](#) [73080255059](#) [73080965046](#) [765-15-0080A](#) [765-16-0080B](#)  
[765-18-0080D](#) [829992-1](#) [902-77-02113](#) [PS00/A0620/6300](#) [PS25/A0420/63](#) [129-1J](#) [1409400](#) [AN0024023](#) [E6374G1](#) [e6389g2](#) [157-43GW8](#)  
[MS3117-14AC](#) [1643543-1](#) [1650540-1](#) [1651811-2](#) [1766260-1](#) [1766282-1](#) [1766966-1](#) [1791340000](#) [NLDFT-3-BL-L-S120-M40A](#) [NLDFT-N-](#)  
[W-L-C240-M40B](#) [NLS-2-R-C240-M40B](#) [NLS-N-W-C240-M40B](#) [NPS-3-BL-T6](#) [1986615-1](#) [2-1589900-8](#) [2199314-1](#) [KA8102](#)