

AMPMODU MTE INTERCONNECT SYSTEM

Quick Reference Guide

AMPMODU MTE Interconnect System

The TE Connectivity (TE) AMPMODU MTE interconnection system is utilized in wire-to-board and wire-to-wire applications, and can be found in many types of electronic equipment including computers, copiers, commercial printers, appliances, medical equipment, and automotive controls. The product implements Insulation Displacement Contacts (IDC) or Crimp Snap-In contacts to suit customer's needs.

BENEFITS & FEATURES

- Assembly designs offer latching and polarization
- Coupling shrouds permit ganging of smaller receptacle and pin assemblies with guide ribs to form larger single or double row latching connectors
- Available in three platings
- Swage option on posts provides retention in PC board
- High temperature option is SMT compatible
- Applicable Sizes 2-25 positions per row

APPLICATIONS

- Medical Instruments
- Automotive Controls
- Copiers
- Appliances
- Commercial Printers
- Vending
- Computers
- Instrumentation & Test Equipment
- Telecommunications
- Storage Equipment

PRODUCT/APPLICATION SPECIFICATION

- **Product Specification:**
108-25034 (Standard Product)
108-25034-2 (Surface Mount Product)
- **Application Specification:** 114-25026
- **Operating Temperature:** -65° to +105°C
- **Current:** 3 amps max.
(single contact in free air)

INSULATION DISPLACEMENT VS. CRIMP SNAP-IN

IDC

- Time savings for high volume applications
- Preloaded contacts
- Automation
- Mates with same headers as crimp


Crimp-on Snap-In

- Cost effective for low/medium volume applications
- Flexibility (AWG)
- Manual labor
- Mates with same headers as IDC

AMPMODU MTE Interconnect System

RECEPTACLE ASSEMBLIES

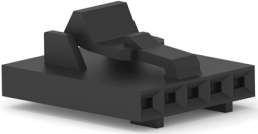
IDC Receptacles

| Product Type | Product Image | Size | AWG | Plating | | |
|---------------------------|---|------|------------|---------------|---------------|------------|
| | | | | 15 μ " Au | 30 μ " Au | Matte Tin |
| MTE Receptacle Assemblies |  | 2 | 22-26 | 5-103957-1 | 5-103958-1 | 5-103956-1 |
| | | 3 | | 5-103957-2 | 5-103958-2 | 5-103956-2 |
| | | 4 | | 5-103957-3 | 5-103958-3 | 5-103956-3 |
| | | 5 | | 5-103957-4 | 5-103958-4 | 5-103956-4 |
| | | ... | | ... | ... | |
| | | 25 | 7-103644-4 | 7-103734-4 | 7-103645-4 | |
| | | 2 | 26-30 | 5-103960-1 | 5-103961-1 | 5-103959-1 |
| | | 3 | | 5-103960-2 | 5-103961-2 | 5-103959-2 |
| | | 4 | | 5-103960-3 | 5-103961-3 | 5-103959-3 |
| | | 5 | | 5-103960-4 | 5-103961-4 | 5-103959-4 |
| | | ... | | ... | ... | |
| | | 25 | | 7-103640-4 | 7-103897-4 | 7-103641-4 |

Short Point Replacement Contacts

| Product Type | Product Image | Size | AWG | Strip | Loose Piece |
|-----------------------------------|---|---------------|-------|------------|-------------|
| Crimp Snap-In Short Point Contact |  | 15 μ " Au | 20-24 | 104479-9 | 1-104479-2 |
| | | 30 μ " Au | | 1-104479-0 | 1-104479-3 |
| | | Matte Tin | | 104479-8 | 1-104479-1 |
| | | 15 μ " Au | 22-26 | 1-104480-2 | 1-104480-5 |
| | | 30 μ " Au | | 1-104480-3 | 1-104480-6 |
| | | Matte Tin | | 1-104480-7 | 1-104480-4 |
| | | 15 μ " Au | 28-32 | 1-104481-0 | 1-104481-2 |
| | | 30 μ " Au | | 1-104481-1 | 1-104481-3 |
| | | Matte Tin | | 5-104481-2 | 5-104481-6 |

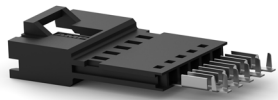
MTE Receptacle Housings

| Product Type | Product Image | Size | PN |
|-------------------------|---|------|------------|
| Wire Receptacle Housing |  | 2 | 104257-1 |
| | | 3 | 104257-2 |
| | | 4 | 104257-3 |
| | | 5 | 104257-4 |
| | | ... | ... |
| | | 25 | 2-104257-4 |

AMPMODU MTE Interconnect System

PIN COUNTERPARTS

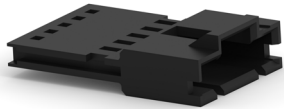
IDC Headers

| Product Type | Product Image | Size | AWG | Plating | | |
|--------------------|---|------|-------|---------------|---------------|------------|
| | | | | 15 μ " Au | 30 μ " Au | Matte Tin |
| MTE Pin Assemblies |  | 2 | 22-26 | 5-103945-1 | 5-103946-1 | 5-103944-1 |
| | | 3 | | 5-103945-2 | 5-103946-2 | 5-103944-2 |
| | | 4 | | 5-103945-3 | 5-103946-3 | 5-103944-3 |
| | | 5 | | 5-103945-4 | 5-103946-4 | 5-103944-4 |
| | | ... | | ... | ... | |
| | | 25 | | 7-103660-4 | 7-103893-4 | 7-103661-4 |
| | | 2 | 26-30 | 5-103948-1 | 5-103949-1 | 5-103947-1 |
| | | 3 | | 5-103948-2 | 5-103949-2 | 5-103947-2 |
| | | 4 | | 5-103948-3 | 5-103949-3 | 5-103947-3 |
| | | 5 | | 5-103948-4 | 5-103949-4 | 5-103947-4 |
| | | ... | | ... | ... | |
| | | 25 | | 7-103658-4 | 7-103894-4 | 7-103659-4 |

Crimp Pin Replacement Contacts

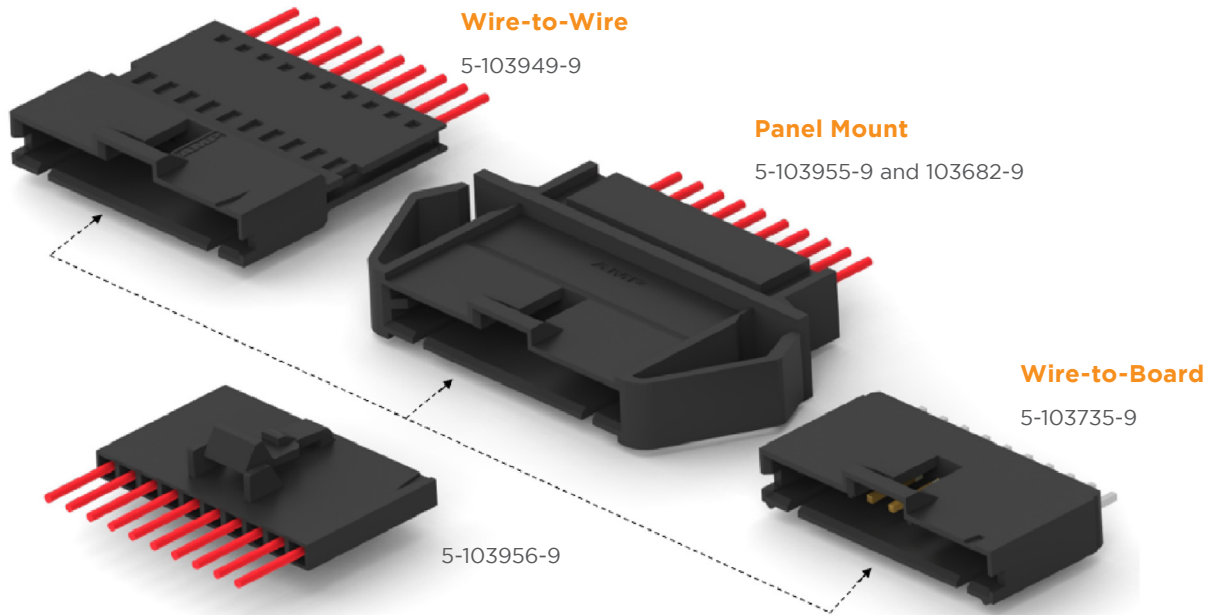
| Product Type | Product Image | Size | AWG | Strip | Loose Piece |
|---------------------------|---|---------------|-------|------------|-------------|
| Crimp Snap-In Pin Contact |  | 15 μ " Au | 22-26 | 5-104505-4 | 5-104505-5 |
| | | 30 μ " Au | | 5-104505-6 | 5-104505-7 |
| | | Matte Tin | | 5-104505-2 | 5-104505-3 |
| | | 15 μ " Au | 28-32 | 5-104506-4 | 5-104506-5 |
| | | 30 μ " Au | | 5-104506-6 | 5-104506-7 |
| | | Matte Tin | | 5-104506-2 | 5-104506-3 |

MTE Crimp Pin Housings

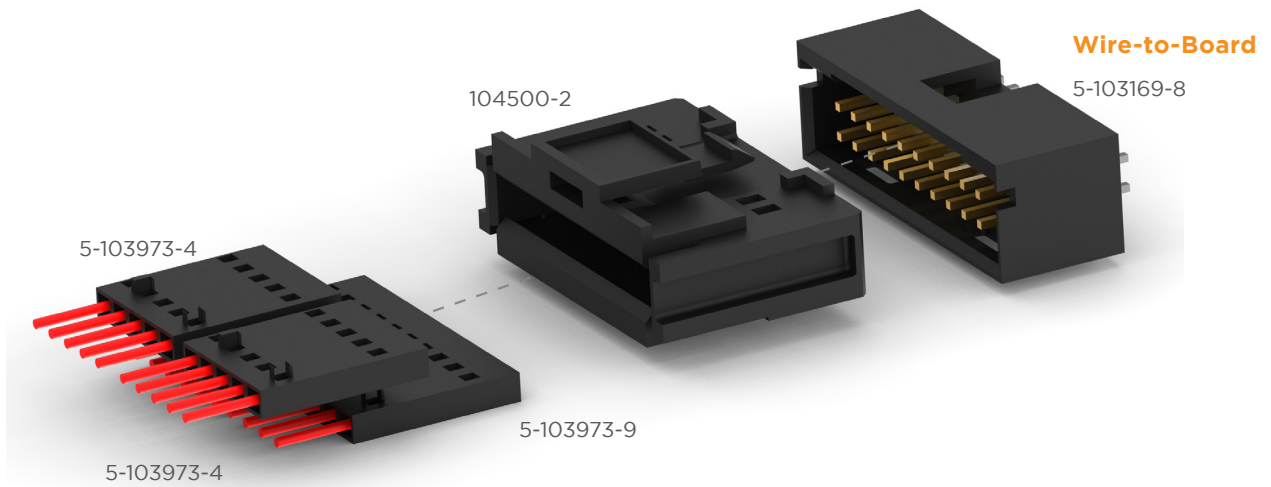
| Product Type | Product Image | Size | PN |
|-----------------------|---|------|------------|
| MTE Crimp Pin Housing |  | 2 | 103653-1 |
| | | 3 | 103653-2 |
| | | 4 | 103653-3 |
| | | 5 | 103653-4 |
| | | ... | ... |
| | | 25 | 2-103653-4 |

AMPMODU MTE Interconnect System

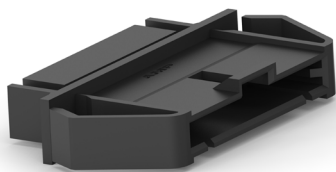
Typical Application of Single-Row Coupling Shroud and Mating AMPMODU MTE Products



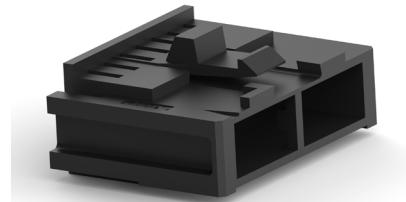
Typical Application of Double-Row Coupling Shroud And Mating Ampmodu MTE Products



Coupling Shrouds



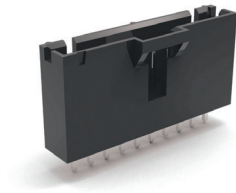
103682 (2-25P)
Panel Mount



103681 (8-16P), 104500 (18-50P)
Double Row

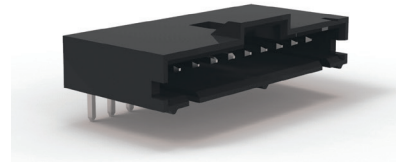
AMPMODU MTE Interconnect System

Single Row, Header on Board



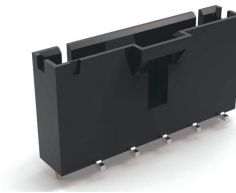
Vertical, THT

| Plating | Standard | Swaged Tail |
|---------------|----------|-------------|
| 30 μ " Au | 103735 | 103908 |
| 15 μ " Au | 104363 | 104362 |
| Matte Tin | 103639 | 103669 |



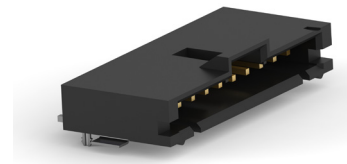
Right Angle, THT

| Plating | w/ Hold Down | w/o Hold Down |
|---------------|--------------|---------------|
| 30 μ " Au | 103904 | 104935 |
| 15 μ " Au | 103673 | 103635 |
| | 104361 | |
| Matte Tin | 103672 | 103634 |



Vertical, SMT

| Plating | w/ Hold Down |
|---------------|--------------|
| 30 μ " Au | 1375583 |
| 15 μ " Au | 1375582 |
| Matte Tin | 1375549 |



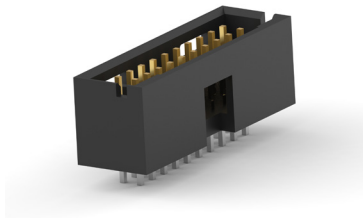
Right Angle, SMT

| Plating | w/ Hold Down |
|---------------|--------------|
| 30 μ " Au | 147323 |
| 15 μ " Au | 147278 |
| Matte Tin | 147324 |

Part Number:

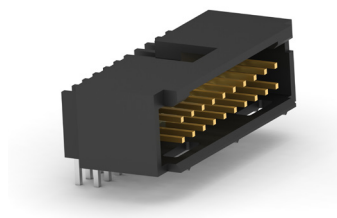
- For all Single Row Headers: 5-xxxxxxx-1 (2P) - 7-xxxxxxx-4 (25P);
- Please visit TE.com for more product detail.

Double Row, Header on Board



Vertical, THT

| Plating | Standard | w/ Hold Down |
|---------------|----------|--------------|
| 30 μ " Au | 103169 | |
| 15 μ " Au | 102619 | 104317 |
| Matte Tin | 87587 | |



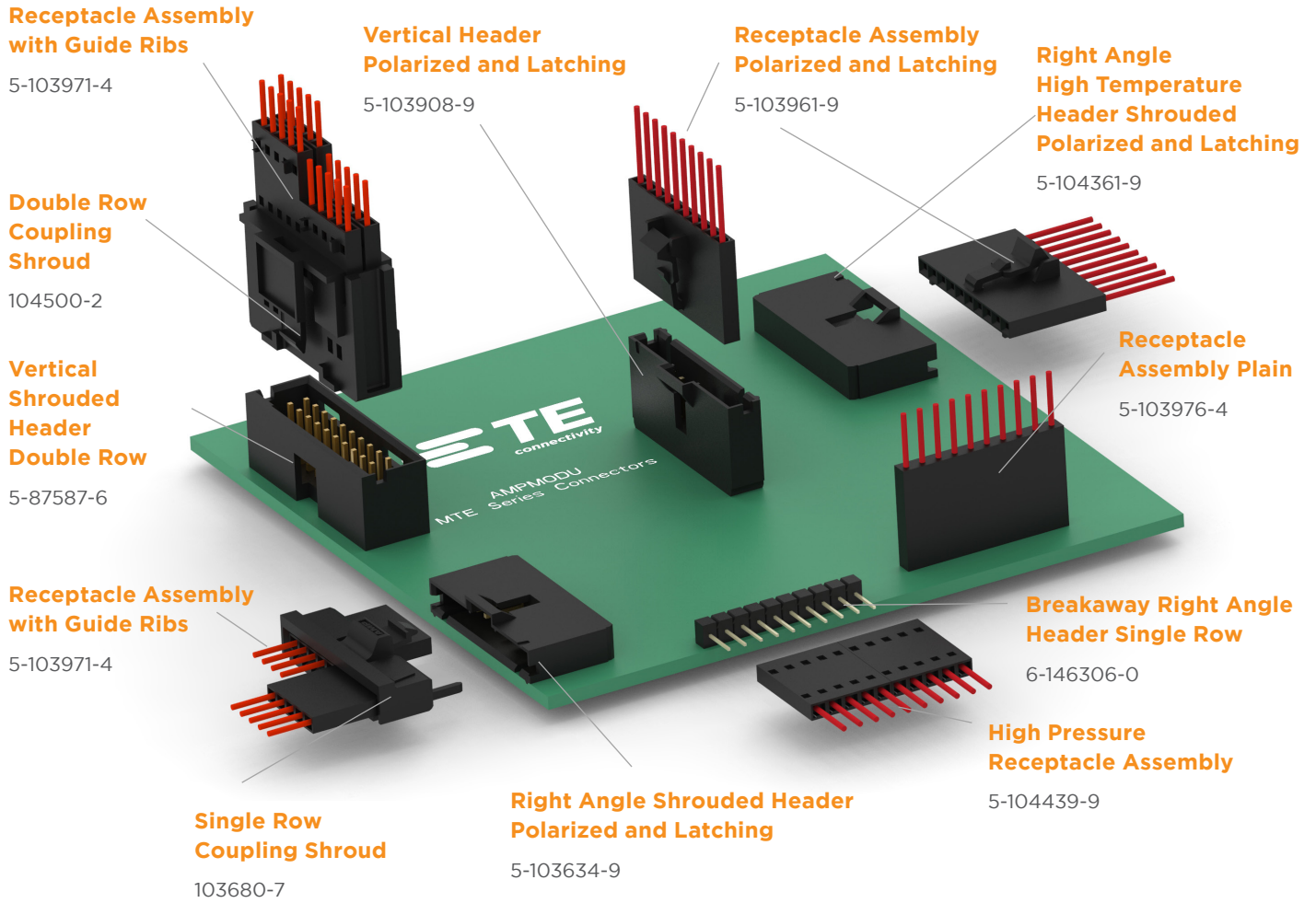
Right Angle, THT

| Plating | Standard | w/ Hold Down |
|---------------|----------|--------------|
| 30 μ " Au | 103167 | |
| 15 μ " Au | 102570 | 104319 |
| Matte Tin | 87577 | |

Part Number:

- Vertical, THT, Standard: 5-xxxxxxx-1 (6P) - 7-xxxxxxx-3 (50P);
- Right Angle, THT, Standard: 5-xxxxxxx-1 (8P) - 7-xxxxxxx-2 (50P);
- Please visit TE.com for more product detail.

AMPMODU MTE Interconnect System



Application Tooling

| AMPMODU MTE Part Number | Tooling Part Number | Tooling Description | Instruction Sheet |
|---|---------------------|--|-------------------|
| All Receptacle Assembly Part Numbers Listed Below | 58074-1 | Manual Pistol Grip | 408-6790 |
| | 58075-1 | Pneumatic Pistol Grip | 408-6789 |
| | 58338-1 | Bench Mounted Pneumatic Power Assembly | 408-9393 |
| | 931800-1 | IDC Electric Power Unit | 409-5746 |
| | 58336-1 | MTE Modular Head | 408-9359 |

AMPMODU MTE Interconnect System

What are the current rating (amps) and voltage requirements of AMPMODU MTE connectors?

3 amps for a single contact in free air, 267 V (operating voltage)

What type and size requirements?

#22-#30 AWG range for IDC configurations; #20-#32 AWG for crimp snap-in contacts

What are the number of positions needed?

2-25 positions, double row coupling shrouds allow 8-50 position configurations

Available space?

.100 centerline and .100 x .100 centerline (coupling shrouds mating to PCB headers)

Configuration/orientation?

Right angle, vertical, single/double row

Operating temperature requirements?

Will accommodate -65°C to +105°C range

Environmental Considerations?

Refer to TE product specifications 108-25034, 108-25034-2 (MTE surface mount product), 108-1472 and 108-1472-1 (Short Point)

te.com

© 2019 TE Connectivity. All Rights Reserved.

AMPMODU, TE, TE Connectivity, and TE Connectivity (logo) are trademarks. All other logos, products and/or company names referred to herein might be trademarks of their respective owners.

While TE has made every reasonable effort to ensure the accuracy of the information in this brochure, TE does not guarantee that it is error-free, nor does TE make any other representation, warranty or guarantee that the information is accurate, correct, reliable or current. TE reserves the right to make any adjustments to the information contained herein at any time without notice. TE expressly disclaims all implied warranties regarding the information contained herein, including, but not limited to, any implied warranties of merchantability or fitness for a particular purpose. The dimensions in this catalog are for reference purposes only and are subject to change without notice. Specifications are subject to change without notice. Consult TE for the latest dimensions and design specifications.

4-1773458-0 06/19 Tangence

X-ON Electronics

Largest Supplier of Electrical and Electronic Components

Click to view similar products for [Headers & Wire Housings](#) category:

Click to view products by [TE Connectivity](#) manufacturer:

Other Similar products are found below :

[892-18-020-10-001101](#) [58102-G61-06LF](#) [582553-1](#) [0009485154](#) [009176003701906](#) [0050291907](#) [LY20-4P-DT1-P1E-BR](#) [02.125.8002.8](#)
[609-3404](#) [61062-3](#) [61082-181009](#) [622-3653LF](#) [63453-116](#) [636-1030](#) [636-1427](#) [636-3427](#) [636-4007](#) [641938-9](#) [641991-4](#) [644827-2](#) [65817-010LF](#) [65817-015LF](#) [65863-015LF](#) [66207-023LF](#) [67095-007LF](#) [67601157](#) [68645-018](#) [68648-049](#) [70.362.1628.0](#) [70-4210](#) [70-4226B](#) [70-4853B](#) [707-5020](#) [707-5028](#) [71.350.2428.0](#) [71918-208LF](#) [71961-016LF](#) [733-134](#) [733-162](#) [754199-000](#) [760-3052](#) [787-8014-00](#) [79531-3000](#)
[FCN-360C032-B](#) [FCN-367T-T012/H](#) [FCN-723D010/2](#) [80.063.4001.1](#) [800-90-001-10-001000](#) [800-90-010-10-002000](#) [801-43-002-10-013000](#)