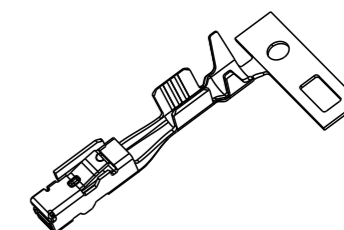
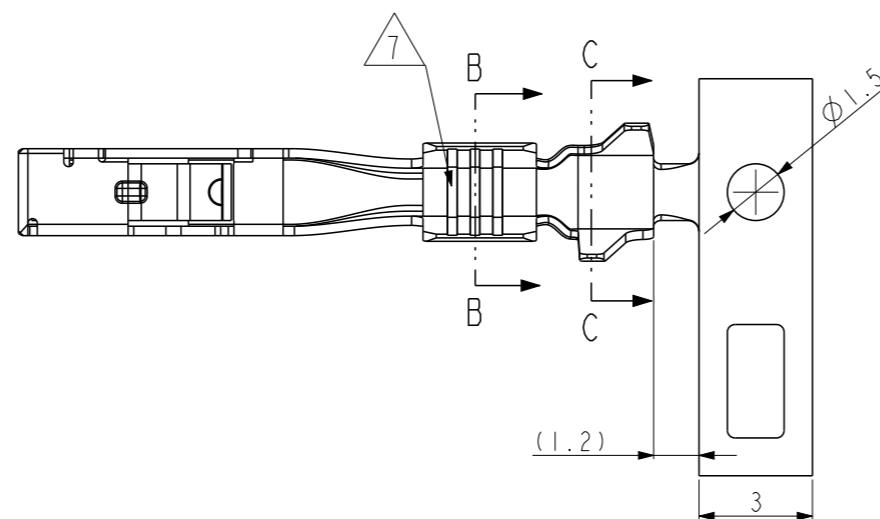


LOC DS

DIST -

REVISIONS

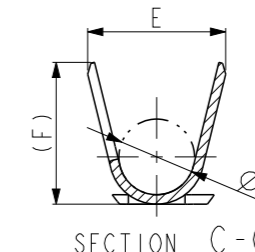
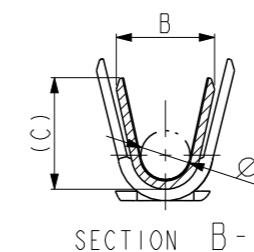
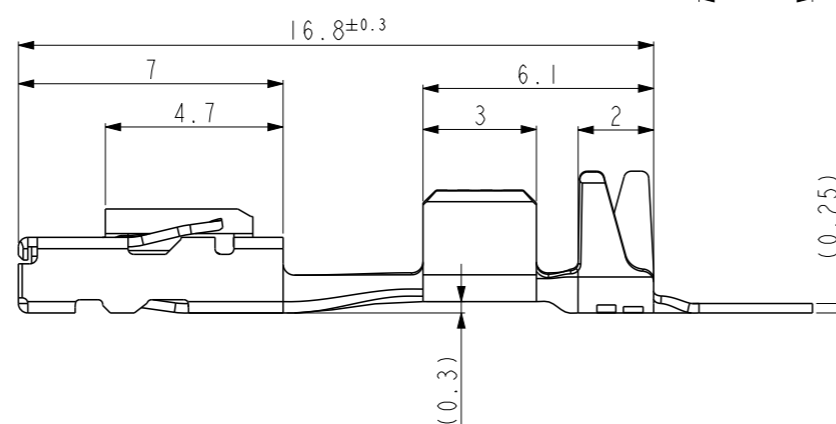
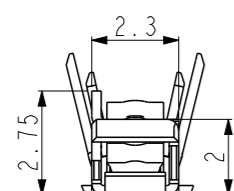
P	LTR	DESCRIPTION	DATE	DWN	APVD
	A4	REVISED ((ECR-17-016272))	19.FEB.'18	KT	YJ



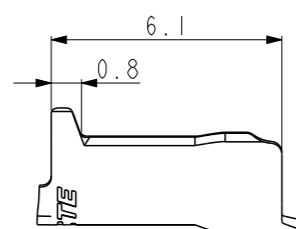
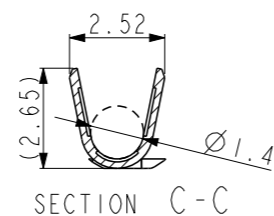
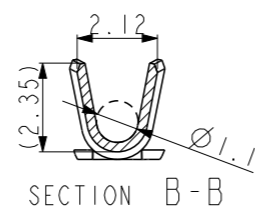
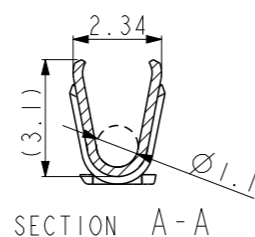
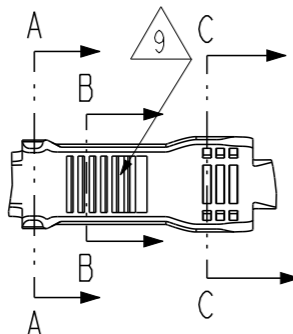
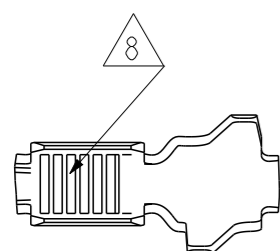
3D VIEW SCALE 2:1

NOTES;

- 1 MATERIAL: CuNiSi ALLOY
- 2 FINISH: PRE-TIN PLATED
- 3. GENERAL TOLERANCE:  $\pm 0.2$ ,  $\pm 3^\circ$
- 4. THIS PRODUCT IS DESIGNED TO BE COMPATIBLE WITH UN-SEALED APPLICATIONS.
- 5. APPLICATOR FEED: 10.0
- 6. MATING TAB THICKNESS:  $0.63 \pm 0.03$
- 7 THREE SERRATIONS CENTERED IN WIRE BARREL
- 8 SEVEN SERRATIONS CENTERED IN WIRE BARREL
- 9 COMBINED BARREL AND SEVEN SERRATIONS



PRELIMINARY - NOT RELEASED YET



7	(2.9)	2.8	Ø1.7	(2.3)	2.2	Ø1.1	1.4 - 1.9	0.5 - 0.75SQ	2	1	060 REC GOLD (S)	1-2109006-2
7	(2.45)	2.4	Ø1.3	(1.7)	1.7	Ø0.8	1.0 - 1.5	0.22 - 0.35SQ	2	1	060 REC GOLD (SS)	1-2109006-1
8	(3.75)	3.65	Ø2.0	(2.95)	2.6	Ø1.3	Ø1.8	AL 1.25SQ	2	1	AL 060 REC (M)	8-2109006-3
8	(2.9)	2.8	Ø1.7	(2.3)	2.2	Ø1.1	Ø1.4	AL 0.75SQ	2	1	AL 060 RECEPT (S)	8-2109006-2
9	(2.65)	2.52	Ø1.4	(2.35)	2.12	Ø1.1	Ø1.4	AL 0.75SQ	2	1	AL 060 RECEPT	9-2109006-2
7	(3.75)	3.65	Ø2.0	(2.95)	2.6	Ø1.3	1.8 - 2.4	0.85 - 1.25SQ	2	1	060 RECEPT (M)	2109006-3
7	(2.9)	2.8	Ø1.7	(2.3)	2.2	Ø1.1	1.4 - 1.9	0.5 - 0.75SQ	2	1	060 RECEPT (S)	2109006-2
7	(2.45)	2.4	Ø1.3	(1.7)	1.7	Ø0.8	1.0 - 1.5	0.22 - 0.35SQ	2	1	060 RECEPT (SS)	2109006-1
SHAPE	(F)	E	ØD	(C)	B	ØA	INSUL RANGE	WIRE RANGE	FINISH	MATERIAL	DESCRIPTION	PART NO.

THIS DRAWING IS A CONTROLLED DOCUMENT.

DIMENSIONS:	TOLERANCES UNLESS OTHERWISE SPECIFIED:
mm	0 PLC ±
	1 PLC ±
	2 PLC ±
	3 PLC ±
	4 PLC ±
	ANGLES ±
MATERIAL	FINISH
1	2

DWN	KT JUNG
CHK	KT LIM
APVD	HG CHO
PRODUCT SPEC	108-61116
APPLICATION SPEC	114-61036
WEIGHT	-
CUSTOMER DRAWING	



.060 RECEPT. CONTACTS

NAME			
SIZE	CAGE CODE	DRAWING NO	RESTRICTED TO
A3	00779	C-2109006	-
SCALE	SHEET	OF	REV
5:1	1	1	A4

MISSING DIMENSIONS ARE SAME WITH THREE SERRATIONS

## X-ON Electronics

Largest Supplier of Electrical and Electronic Components

*Click to view similar products for [Automotive Connectors](#) category:*

*Click to view products by [TE Connectivity](#) manufacturer:*

Other Similar products are found below :

[003-018-000](#) [60403001](#) [60993906-B](#) [M902-2131](#) [M902-2161](#) [72.330.1035.1](#) [73.353.4028.0](#) [F119300-B](#) [F166900](#) [F258300-B](#) [F358300-B](#)  
[F407400](#) [F444110](#) [F487000](#) [F509500B-B](#) [827153-1](#) [8N1515-32-24P](#) [9-1326729-8](#) [925474-1](#) [928905-1](#) [964562-4](#) [968782-1](#) [GT17SA-8DS-](#)  
[HU](#) [98891-1012](#) [98947-1016](#) [12004147](#) [12004475-L](#) [12010290](#) [12010309-B](#) [12015454](#) [12020219-B](#) [12020308](#) [12041318-B](#) [12052225-L](#)  
[12052466](#) [12059125](#) [12064869](#) [12004327-B](#) [12010503-B](#) [12015308](#) [12015384](#) [12015909](#) [1-21030-1](#) [12041254](#) [12041318](#) [12047946-B](#)  
[12047957](#) [12047957-L](#) [12059473](#) [12066261](#)