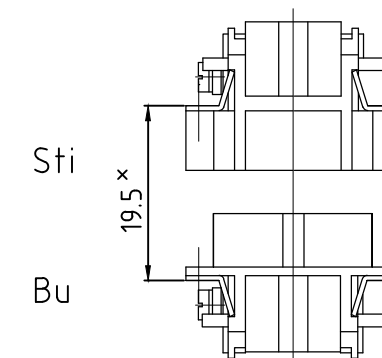
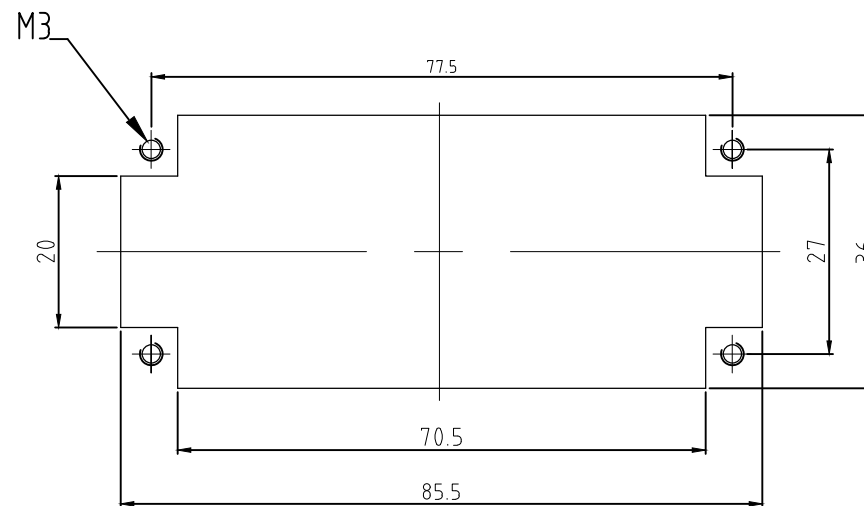
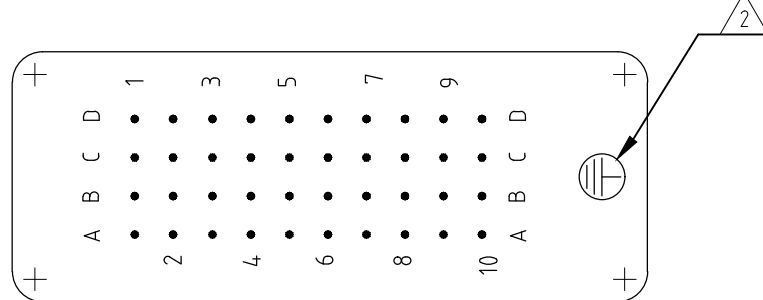


REVISIONS ÄNDERUNGEN				
P	LTR	DESCRIPTION BESCHREIBUNG	DATE	DWN APVD
	D	ECR-17-018317	22DEC2017	GCM MKO

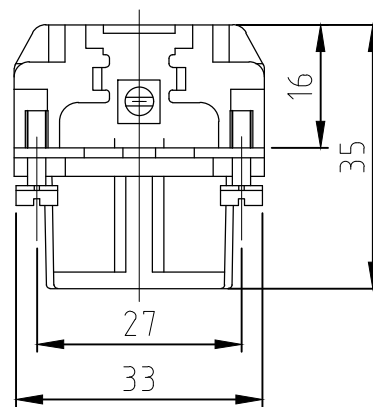
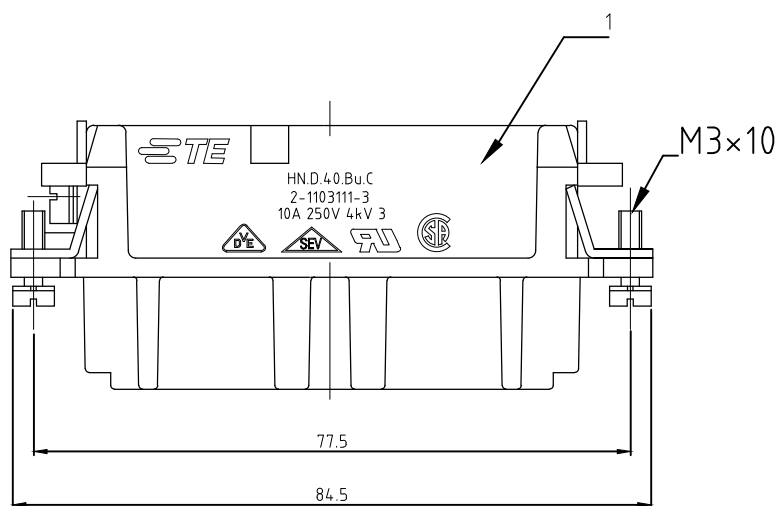
Panel cut-out for contact insert when used without housing

Montagehinweis

view from plug side



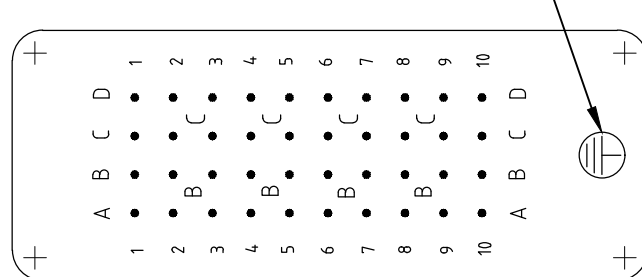
* Abstand für sichere Kontakt-gabe max: 21 mm


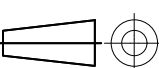


NOTES

- 1 CONTACT: 1 - 40
OUTER DIMENSION OF INSULATION: MAX. $\phi 4,3$ MM
- 2 GROUNDING CONTACT CAN BE FIXED AT THIS POSITION.
- 3 SUITABLE HOOD SIZE 6: SERIES HB, HD, EMV, AND HIP
- 4 STANDARDS: DIN EN 61984; DIN EN 60664-1
- 5 PACKAGING: 5 PIECES IN A CARTON

view from termination side



1	Buchseneinsatz HN.D.40 Crimp	dark grey	1	-	
2-3	DESCRIPTION / BENENNUNG	MATERIAL	COLOR / FARBE	ITEM NO.	
5	THIS DRAWING IS A CONTROLLED DOCUMENT. DIESE ZEICHNUNG IST EIN KONTROLLIERTES DOKUMENT.	DWN Schneider	12AUG1998	 TE Connectivity FEMALE INSERT BUCHSENEINSATZ HN.D.40	
HN.D.40.Bu.C	DIMENSIONS: MASSE/HEITEN: mm 	CHK Schweiger	12AUG1998		
		TOLERANCES UNLESS OTHERWISE SPECIFIED: ALLGEMEINTOLERANZEN n. ISO 8015 p. ISO 2768 - mH - E p. DIN 16901 - 140			NAME
		0 PLC ± - 1 PLC ± - 2 PLC ± - 3 PLC ± - 4 PLC ± - ANGLES / WINKEL ± -			PRODUCT SPEC PRODUKTSPEZ. 108-74002
		MATERIAL			APPLICATION SPEC VERARBEITUNGSSPEZ. 114-74000
ORDERING TEXT / BESTELLTEXT		WEIGHT GEWICHT	69g	SIZE A3	
FINISH/OBERFLAECHE/FARBE		CUSTOMER DRAWING/KUNDENZEICHNUNG		SCALE MASSTAB 1:1	
		CAGE CODE 00779		DRAWING NO ZEICHNUNGS-NR. G-1103111	
		SHEET BLATT 1 von 1		RESTRICTED TO NUR FUER -	
		REV D			

X-ON Electronics

Largest Supplier of Electrical and Electronic Components

Click to view similar products for [Heavy Duty Power Connectors](#) category:

Click to view products by [TE Connectivity](#) manufacturer:

Other Similar products are found below :

[647757-1](#) [6643411-1](#) [6646058-2](#) [6646137-1](#) [6646138-1](#) [6646479-1](#) [6646608-1](#) [6646786-1](#) [6646940-1](#) [6651091-1](#) [6651525-1](#) [6651529-1](#)
[6651788-1](#) [696475-1](#) [702-32-01109](#) [703-25-02205](#) [73000005059](#) [73000005642](#) [73080255059](#) [73080965046](#) [765-15-0080A](#) [765-16-0080B](#)
[765-18-0080D](#) [829992-1](#) [902-77-02113](#) [PS00/A0620/6300](#) [PS25/A0420/63](#) [129-1J](#) [1409400](#) [AN0024023](#) [E6374G1](#) [e6389g2](#) [157-43GW8](#)
[MS3117-14AC](#) [1643543-1](#) [1650540-1](#) [1651811-2](#) [1766260-1](#) [1766282-1](#) [1766966-1](#) [1791340000](#) [NLDFT-3-BL-L-S120-M40A](#) [NLDFT-N-](#)
[W-L-C240-M40B](#) [NLS-2-R-C240-M40B](#) [NLS-N-W-C240-M40B](#) [NPS-3-BL-T6](#) [1986615-1](#) [2-1589900-8](#) [2199314-1](#) [KA8102](#)