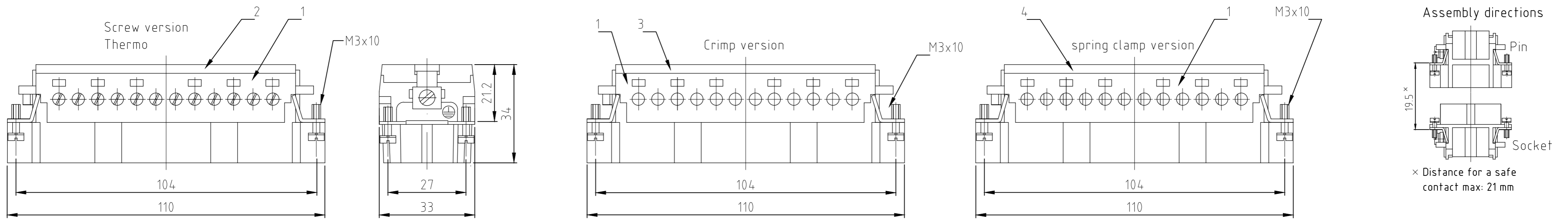
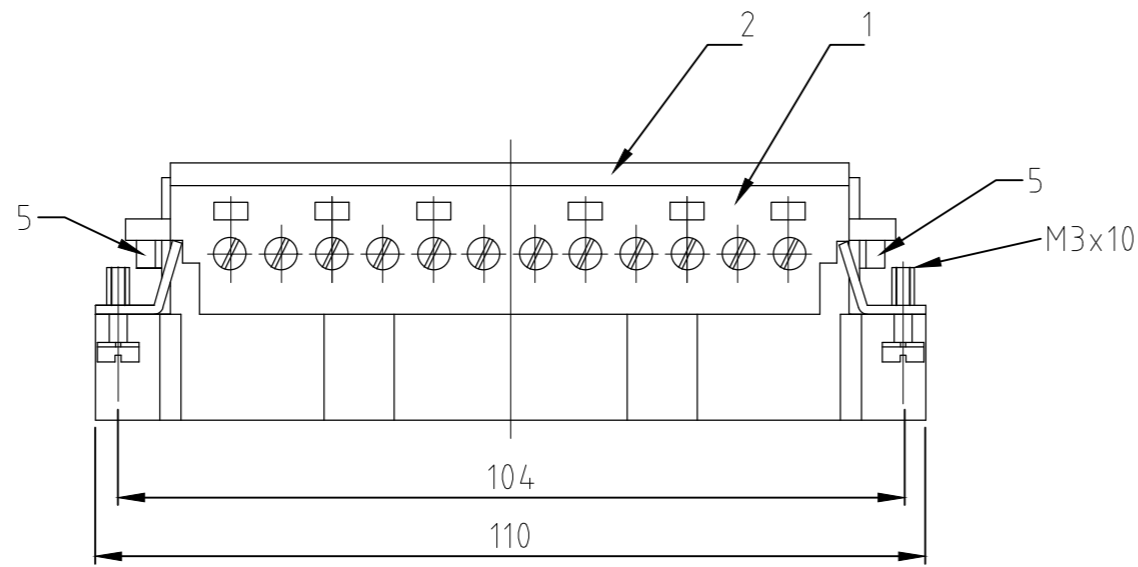
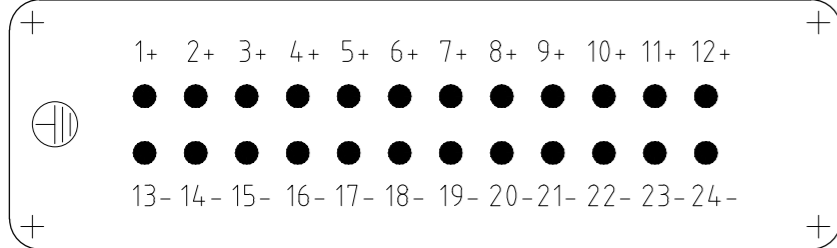


REVISIONS					
P	LTR	DESCRIPTION	DATE	DWN	APVD
E5		REVISED PER ECR-17-014011	27MAR18	NG	MKO

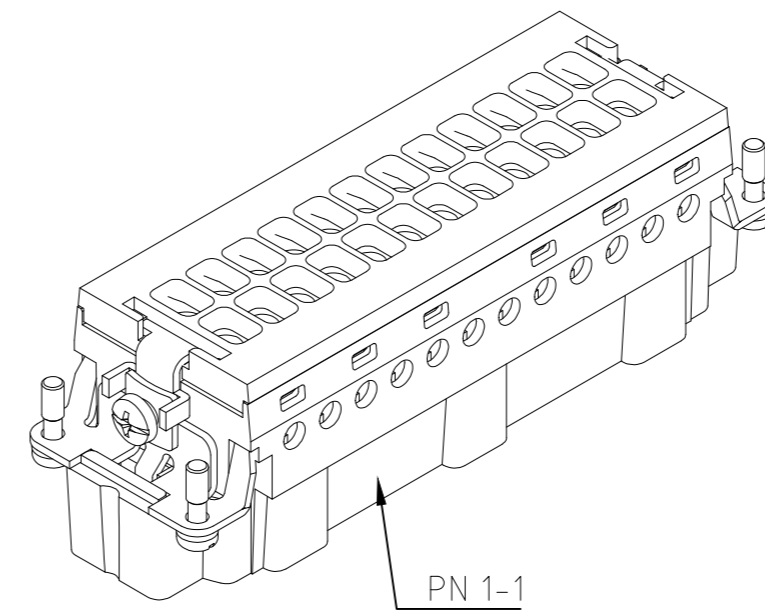
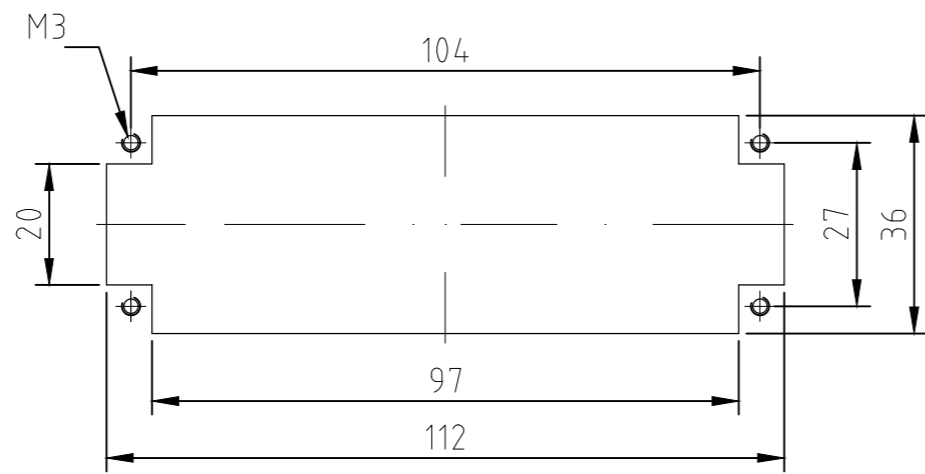


Contact arrangement view from termination side

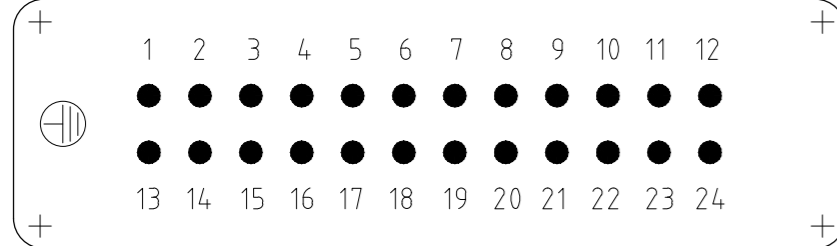
Printing 1-24 Thermo



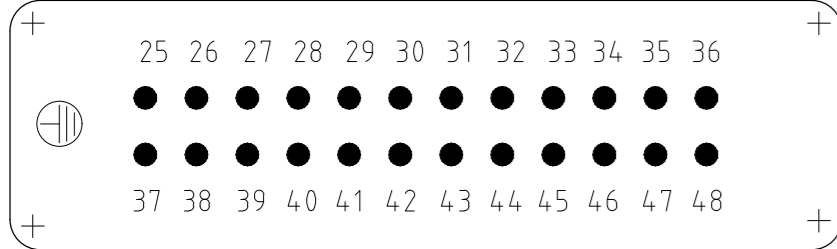
Panel cut-out for contact insert when used without housing



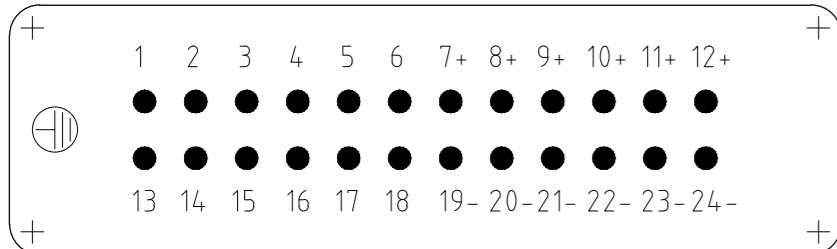
Printing 1-24 Screw



Printing 25-48 Screw



Printing 12+6+6 Screw/Thermo



NOTES:

- SUITABLE CRIMP CONTACTS: SERIES HE/HA
OUTER DIMENSIONS OF INSULATION: MAX. Ø3,2 MM
- SUITABLE HOOD SIZE 8; 12: SERIES HB; HD; HIP; EMV
SUITABLE INSERTION AND EXTRACTION TOOL:
SCREWDRIVER 0,5x3 DIN 5264
- Strip length: Screw connection 10mm
Spring clamp connection 10mm Crimp connection 7.5mm
- STANDARDS:
DIN EN 61984; DIN EN 60664-1
- PACKAGING:
5 SETS IN A CARTON, PRE-MOUNTED
- SPECIAL PACKAGING: Krauss-Maffei
PACKAGING UNIT: 220 PIECES

ITEM NO.	DESCRIPTION	MATERIAL	COLOR / FARBE	ITEM NO. POS.	NOTES
2	cover spring clamp version	steel	blue	5	M4x6
1	cover crimp version		light grey	4	
1	cover screw version		light grey	3	
1	pin insert		light grey	2	
1	pin insert		light grey	1	

ITEM NO.	DESCRIPTION	MATERIAL	COLOR / FARBE	ITEM NO. POS.	NOTES
2	cover spring clamp version	steel	blue	5	M4x6
1	cover crimp version		light grey	4	
1	cover screw version		light grey	3	
1	pin insert		light grey	2	
1	pin insert		light grey	1	

ITEM NO.	DESCRIPTION	MATERIAL	COLOR / FARBE	ITEM NO. POS.	NOTES
2	cover spring clamp version	steel	blue	5	M4x6
1	cover crimp version		light grey	4	
1	cover screw version		light grey	3	
1	pin insert		light grey	2	
1	pin insert		light grey	1	

ITEM NO.	DESCRIPTION	MATERIAL	COLOR / FARBE	ITEM NO. POS.	NOTES
2	cover spring clamp version	steel	blue	5	M4x6
1	cover crimp version		light grey	4	
1	cover screw version		light grey	3	
1	pin insert		light grey	2	
1	pin insert		light grey	1	

ITEM NO.	DESCRIPTION	MATERIAL	COLOR / FARBE	ITEM NO. POS.	NOTES
2	cover spring clamp version	steel	blue	5	M4x6
1	cover crimp version		light grey	4	
1	cover screw version		light grey	3	
1	pin insert		light grey	2	
1	pin insert		light grey	1	

ITEM NO.	DESCRIPTION	MATERIAL	COLOR / FARBE	ITEM NO. POS.	NOTES
2	cover spring clamp version	steel	blue	5	M4x6
1	cover crimp version		light grey	4	
1	cover screw version		light grey	3	
1	pin insert		light grey	2	
1	pin insert		light grey	1	

ITEM NO.	DESCRIPTION	MATERIAL	COLOR / FARBE	ITEM NO. POS.	NOTES
2	cover spring clamp version	steel	blue	5	M4x6
1	cover crimp version		light grey	4	
1	cover screw version		light grey	3	
1	pin insert		light grey	2	
1	pin insert		light grey	1	

X-ON Electronics

Largest Supplier of Electrical and Electronic Components

Click to view similar products for [Heavy Duty Power Connectors](#) category:

Click to view products by [TE Connectivity](#) manufacturer:

Other Similar products are found below :

[647757-1](#) [6643411-1](#) [6646058-2](#) [6646137-1](#) [6646138-1](#) [6646479-1](#) [6646608-1](#) [6646786-1](#) [6646940-1](#) [6651091-1](#) [6651525-1](#) [6651529-1](#)
[6651788-1](#) [696475-1](#) [702-32-01109](#) [703-25-02205](#) [73000005059](#) [73000005642](#) [73080255059](#) [73080965046](#) [765-15-0080A](#) [765-16-0080B](#)
[765-18-0080D](#) [829992-1](#) [902-77-02113](#) [PS00/A0620/6300](#) [PS25/A0420/63](#) [129-1J](#) [1409400](#) [AN0024023](#) [E6374G1](#) [e6389g2](#) [157-43GW8](#)
[MS3117-14AC](#) [1643543-1](#) [1650540-1](#) [1651811-2](#) [1766260-1](#) [1766282-1](#) [1766966-1](#) [1791340000](#) [NLDFT-3-BL-L-S120-M40A](#) [NLDFT-N-](#)
[W-L-C240-M40B](#) [NLS-2-R-C240-M40B](#) [NLS-N-W-C240-M40B](#) [NPS-3-BL-T6](#) [1986615-1](#) [2-1589900-8](#) [2199314-1](#) [KA8102](#)