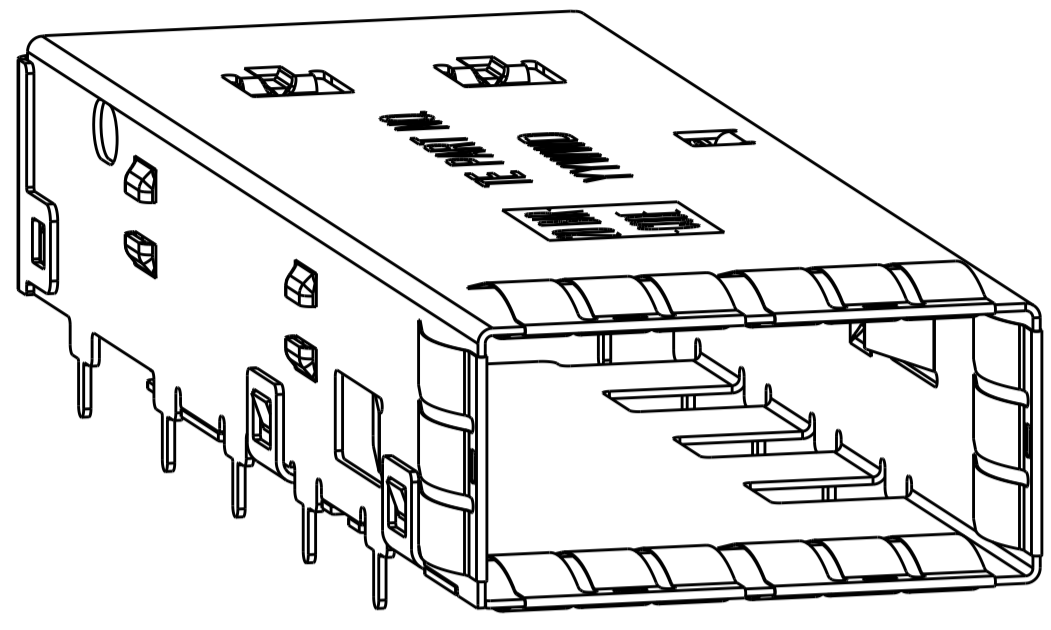
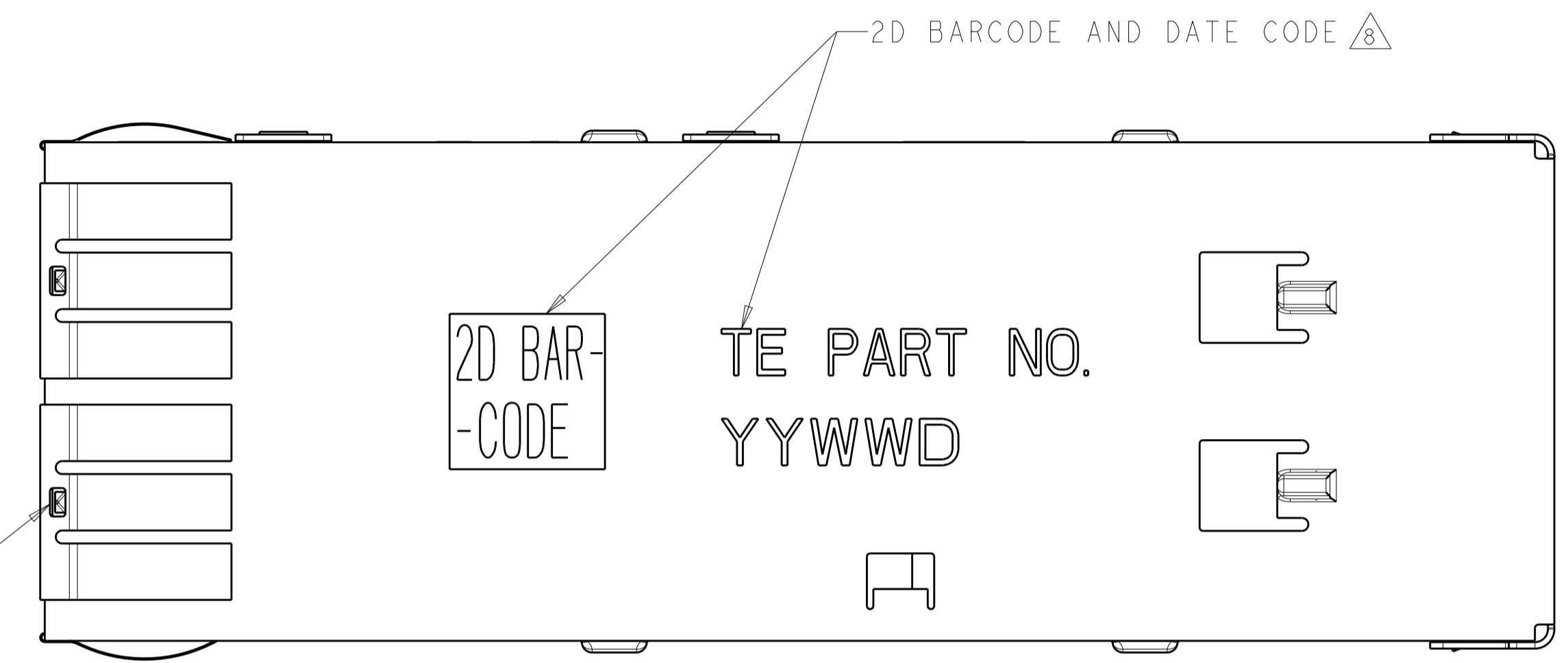


LOC	DIST	REVISIONS					
GP	00	P.	LTN	DESCRIPTION	DATE	DWN	APVD
		3		REVISED	29OCT2009	CR	JP
		4		REVISED	08DEC2010	CJV	EJB
		5		REVISE PER ECO-14-016878	5MAR2015	RG	MC



ISOMETRIC VIEW
SCALE 4:1

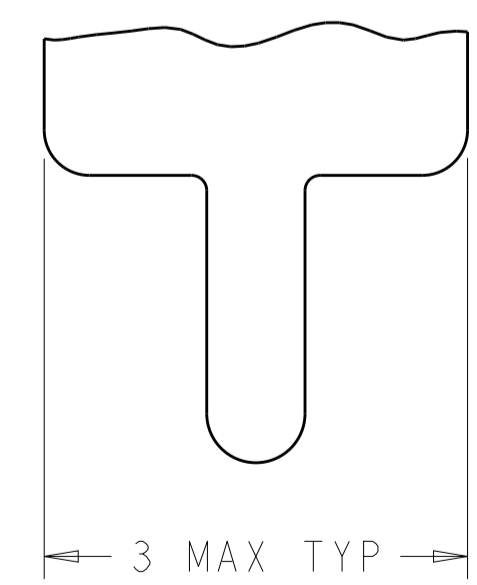
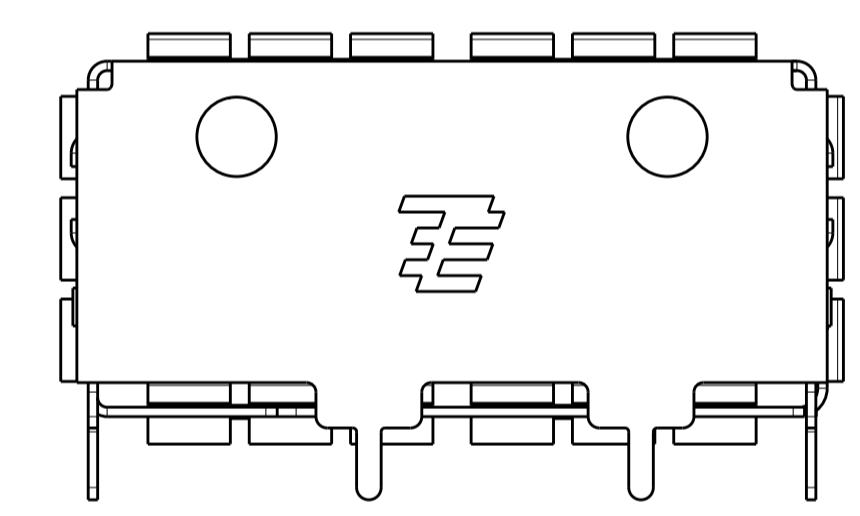
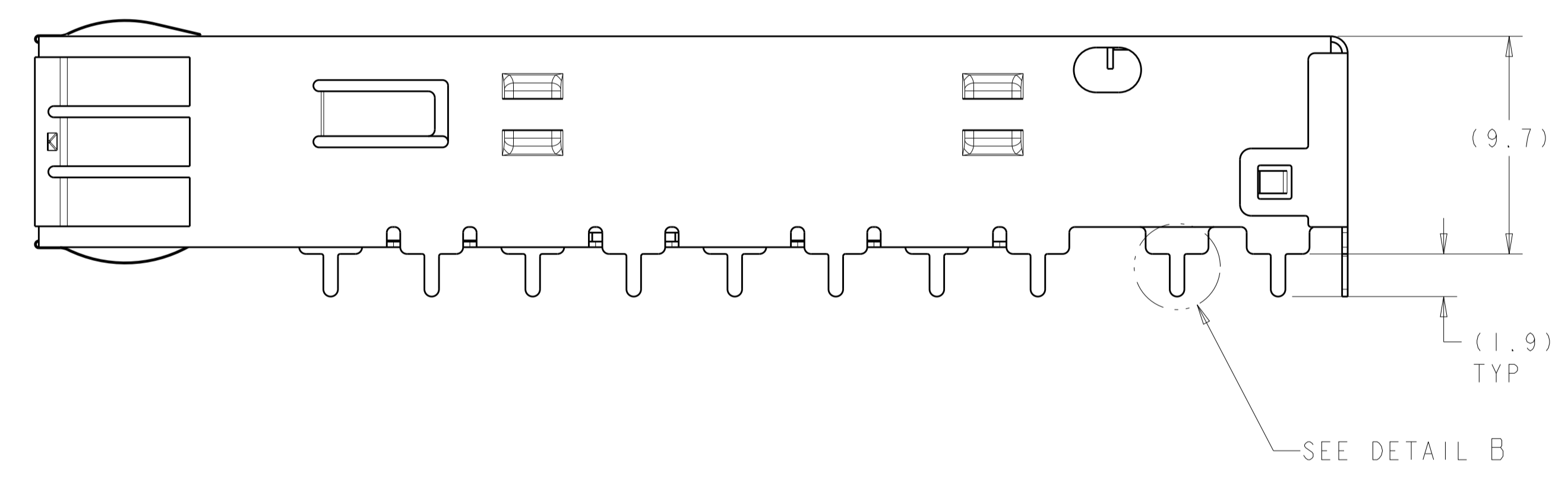
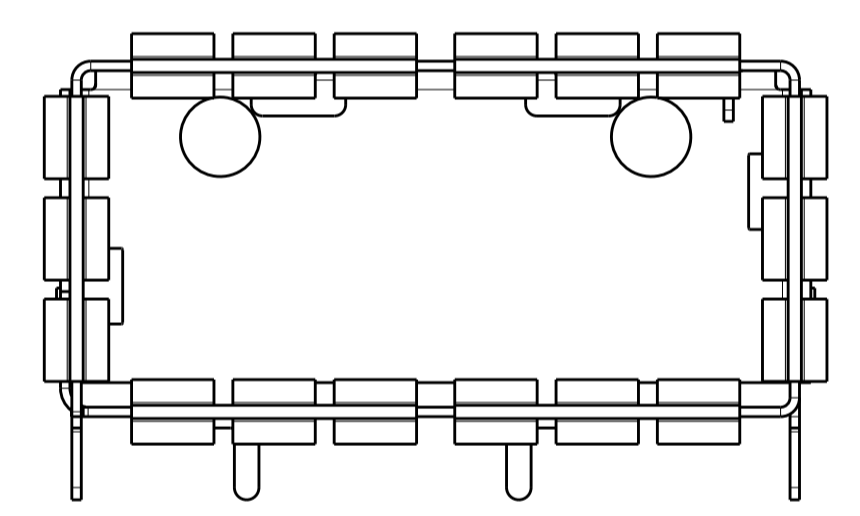
Sn42Bi58 SOLDER
6 PLACES



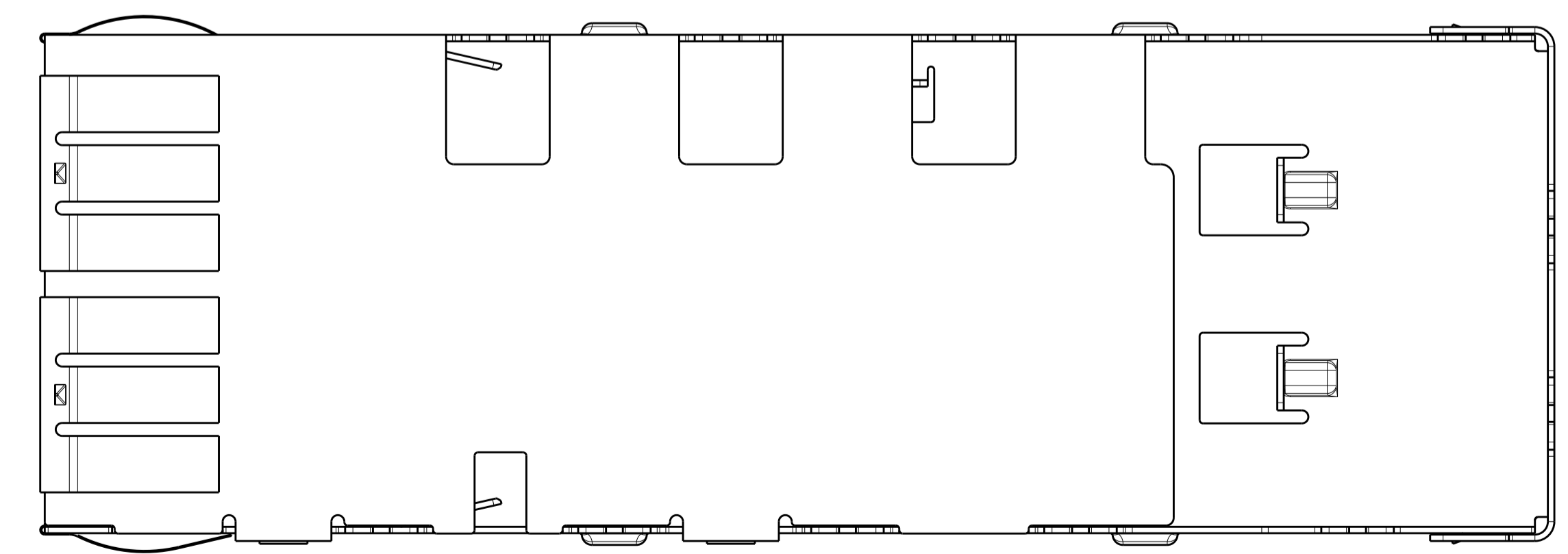
2D BAR-CODE

TE PART NO.
YYWW

2D BARCODE AND DATE CODE



DETAIL B
SCALE 20:1

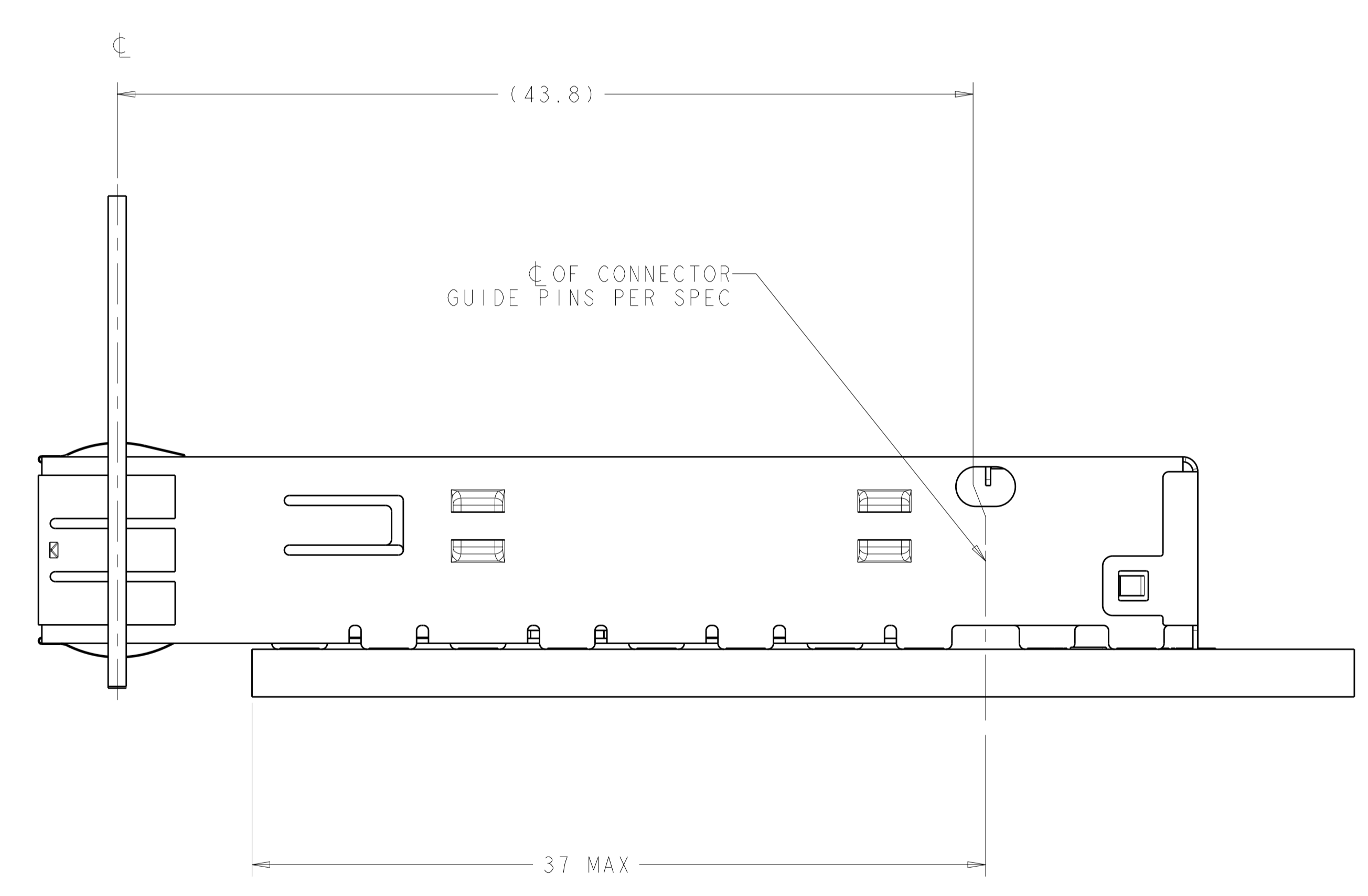
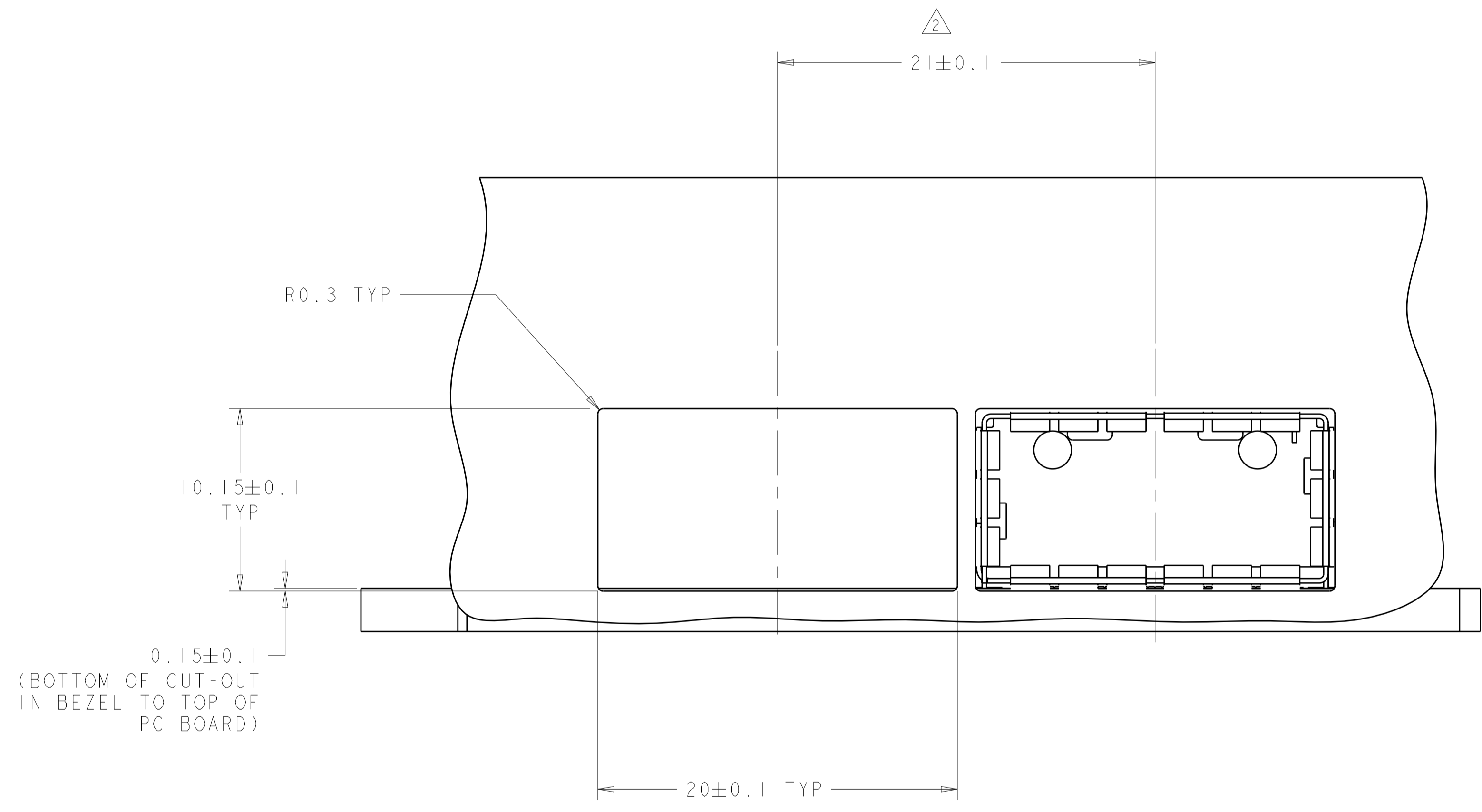


- 1 MATERIAL:
CAGE - 0.25 THICK NICKEL SILVER
SPRINGS - COPPER ALLOY
- 2 MINIMUM PITCH DIMENSION.
- 3. MATES WITH QSFP MSA COMPATIBLE TRANSCEIVER.
- 4 DATUM AND BASIC DIMENSIONS ESTABLISHED BY CUSTOMERS.
- 5. MINIMUM PC BOARD THICKNESS:
SINGLE SIDED: 1.45mm
DOUBLE SIDED: 2.2mm
- 6 DATUM -A- IS TOP SURFACE OF THE HOST BOARD.
- 7 SURFACE TRACES PERMITTED WITHIN THIS AREA EXCEPT WHERE CAGE STANDOFFS, SHOWN IN DETAIL J, CONTACT PC BOARD.
- 8 2D BARCODE AND DATE CODE (YYWW) MARKED APPROXIMATELY AS SHOWN.
- 9 FINISH:
SPRINGS - 0.8µm MIN TIN OVER 0.8µm MIN NICKEL,
NON-PLATED EDGES PERMISSIBLE.
- 10. PRODUCT HAS NOT COMPLETED QUALIFICATION TESTING.

2110487-1
PART NUMBER

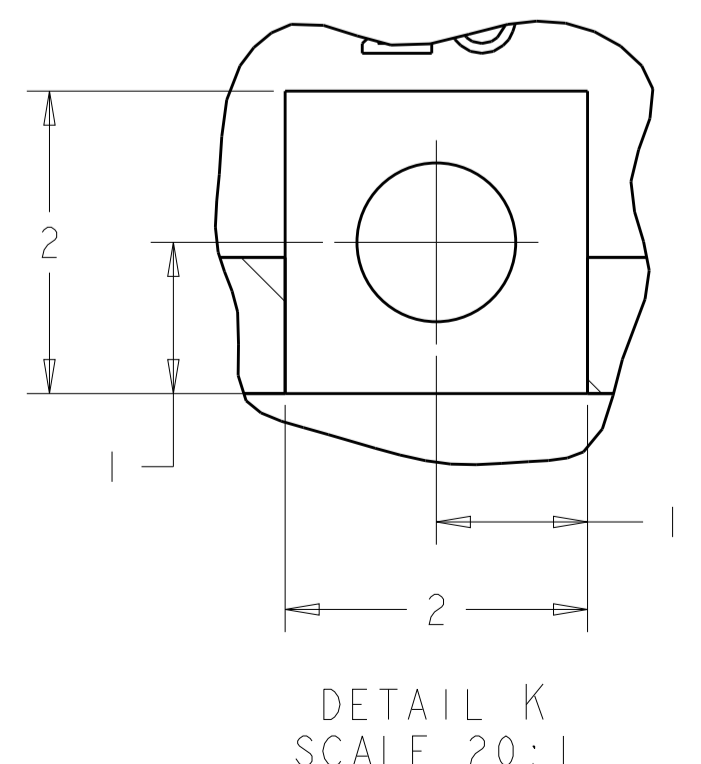
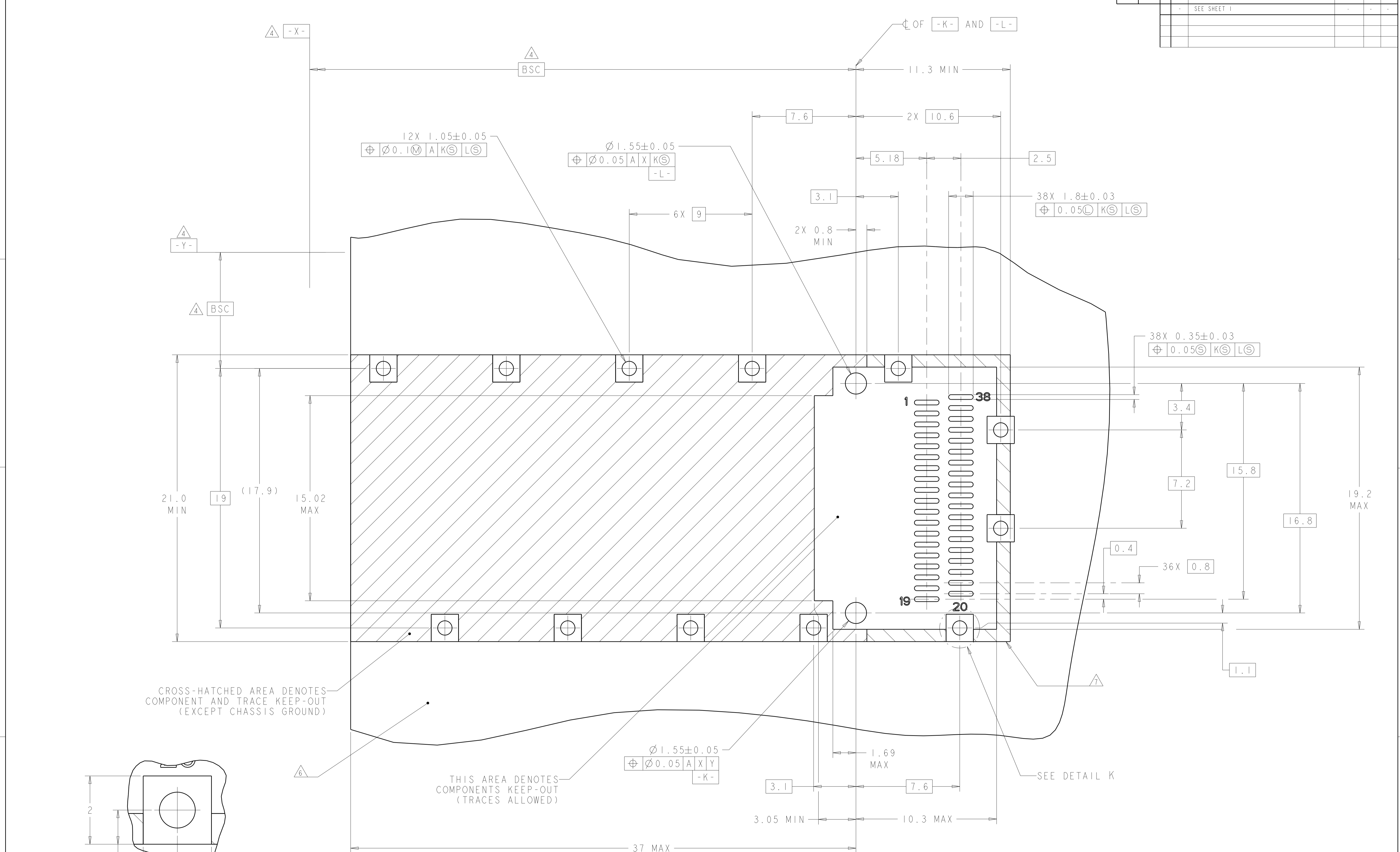
<small>THE DRAWING IS CONTROLLED DOCUMENT FOR THE ELECTRONIC CORPORATION IT IS THE POLICY OF COMPANY TO CONTROL THE DESIGNING ORGANIZATION SHOULD BE CONTACTED FOR THE LATEST REVISION.</small>		DWN Z.M.BEAM 22SEP2009 CHK J.R.PETERSON 22SEP2009 APVD B.H.WERTZ 22SEP2009	Tyco Electronics Harrisburg, PA 17105-3608
DIMENSIONS: mm	TOLERANCES UNLESS OTHERWISE SPECIFIED: 0 PLC ±0.1 1 PLC ±0.1 2 PLC ±0.1 3 PLC ±0.1 4 PLC ±0.1 ANGLES ±°	NAME PRODUCT SPEC APPLICATION SPEC SIZE WEIGHT	Tyco Electronics Harrisburg, PA 17105-3608 NAME PRODUCT SPEC APPLICATION SPEC SIZE WEIGHT
MATERIAL FINISH		114-13217 WEIGHT CUSTOMER DRAWING	RESTRICTED TO A 100779 C=2110487 SCALE 5:1 SHEET 1 OF 5 REV 5

LOC	DIST	REVISIONS					
GP	00	P	LTN	DESCRIPTION	DATE	DWN	APVD
-	-	-	-	SEE SHEET 1	-	-	-



<small>THIS DRAWING IS UNPUBLISHED. IT IS THE PROPERTY OF TYCO ELECTRONICS CORPORATION. IT IS TO BE USED ONLY FOR THE PROJECT AND FOR THE CUSTOMER'S USE. IT IS TO BE RETURNED TO TYCO ELECTRONICS CORPORATION IF IT IS NOT BEING USED FOR THE PROJECT AND FOR THE CUSTOMER'S USE. IT IS TO BE DESTROYED IF IT IS NOT BEING USED FOR THE PROJECT AND FOR THE CUSTOMER'S USE.</small>		DWN: Z.M. REAM 22SEP2009 CHK: J.R. PETERSON 22SEP2009 APVD: B.H. WERTZ 22SEP2009	Tyco Electronics Harrisburg, PA 17105-3608
DIMENSIONS: mm 	TOLERANCES UNLESS OTHERWISE SPECIFIED: 0 PLC ± 0.1 1 PLC ± 0.1 2 PLC ± 0.1 3 PLC ± 0.1 4 PLC ± 0.1 ANGLES ± 0.1 FINISH -	NAME: QSFP PRODUCT SPEC: 108-2286 APPLICATION SPEC: 114-13217 WEIGHT: - CUSTOMER DRAWING	SIZE: A CAGE CODE: 00779 DRAWING NO: C=2110487 RESTRICTED TO: - SCALE: 5:1 SHEET: 2 OF 5 REV: 5

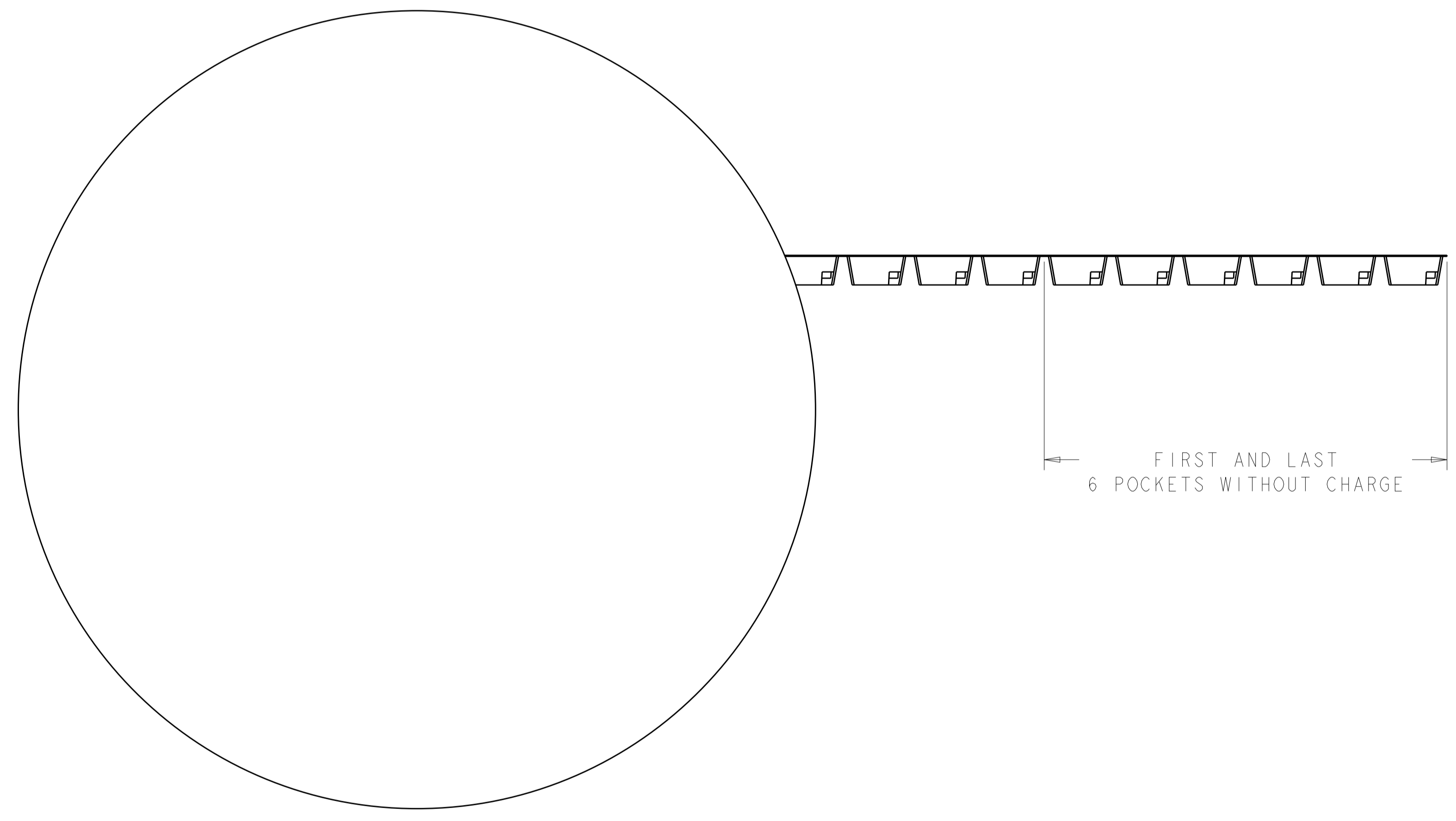
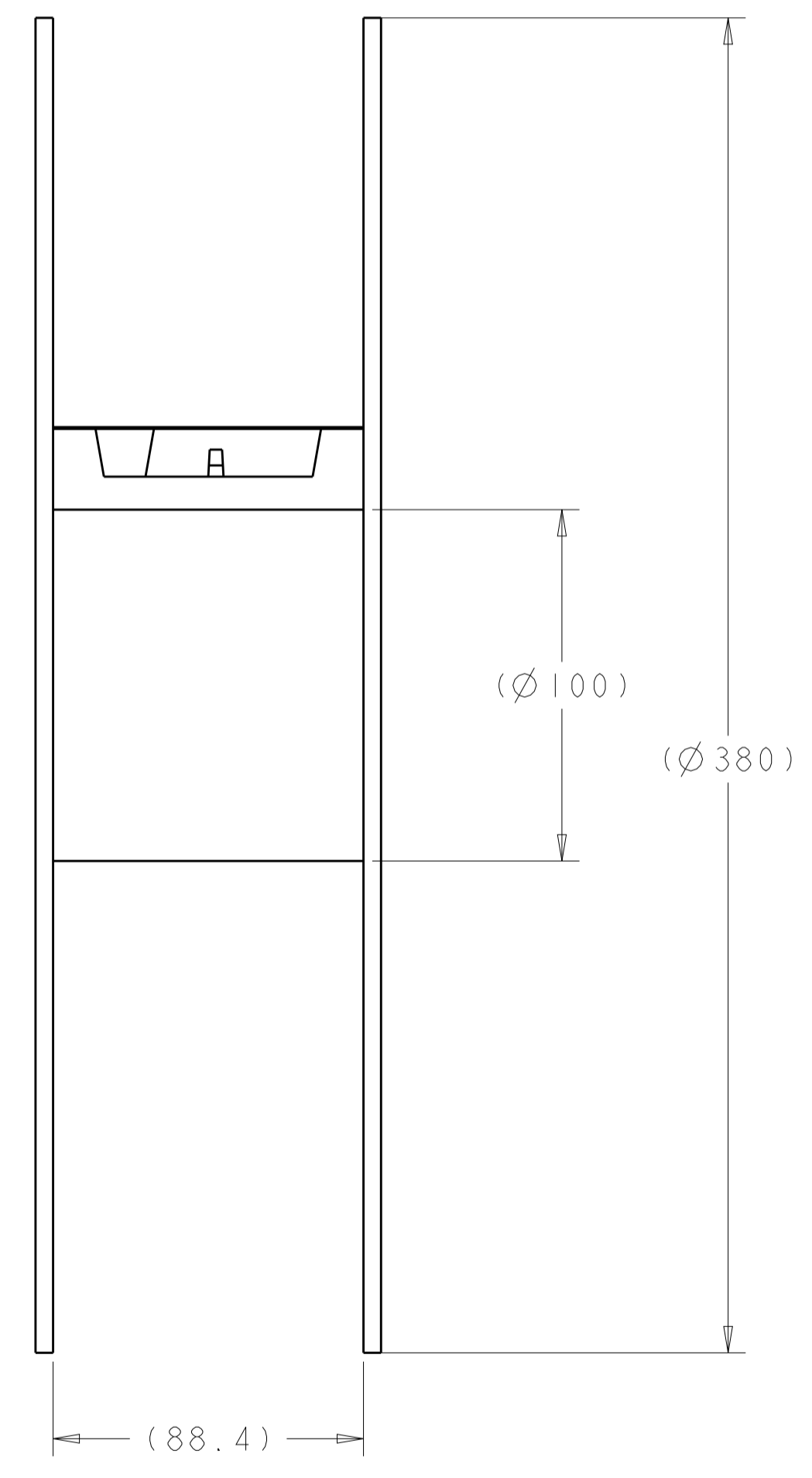
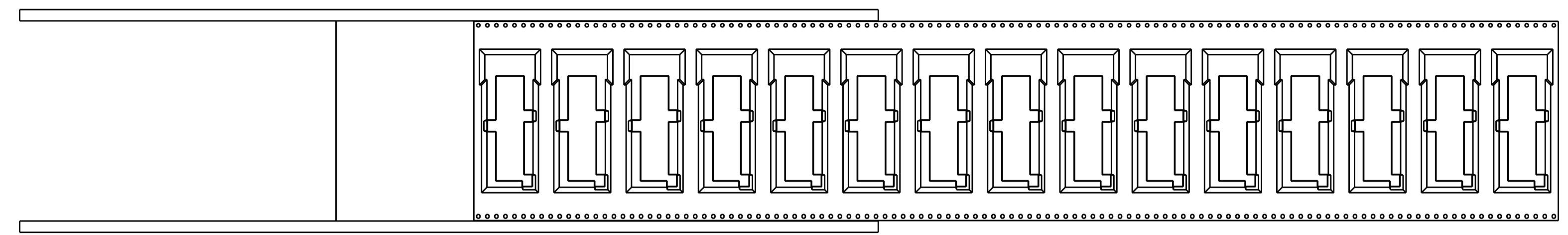
LOC		DIST		REVISIONS			
GP	00	P	LTH	DESCRIPTION	DATE	DWN	APVD
-	-	-	-	SEE SHEET 1	-	-	-



RECOMMENDED PC BOARD LAYOUT
 SCALE 8:1

<small>THIS DRAWING IS UNPUBLISHED. RELEASED FOR PUBLICATION BY TYCO ELECTRONICS CORPORATION. ALL RIGHTS RESERVED.</small>		DWN Z.M.BEAM 22SEP2009 CHK J.R.PETERSON 22SEP2009 APVD B.H.WERTZ 22SEP2009		Tyco Electronics Harrisburg, PA 17105-3608	
DIMENSIONS: mm TOLERANCES UNLESS OTHERWISE SPECIFIED: 0 PLC ±0.1 1 PLC ±0.1 2 PLC ±0.1 3 PLC ± 4 PLC ± ANGLES ±		NAME OSFP PRODUCT SPEC 108-2286 APPLICATION SPEC 114-13217 WEIGHT CUSTOMER DRAWING		SIZE CAGE CODE DRAWING NO. RESTRICTED TO A 100779 C=2110487 SCALE 5:1 SHEET 3 OF 5 REV 5	

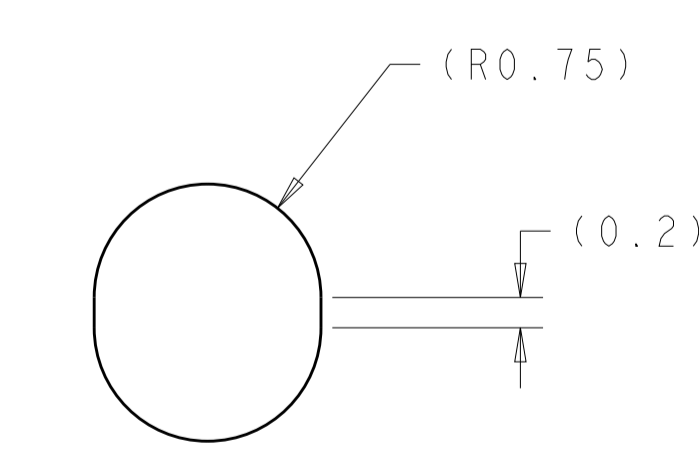
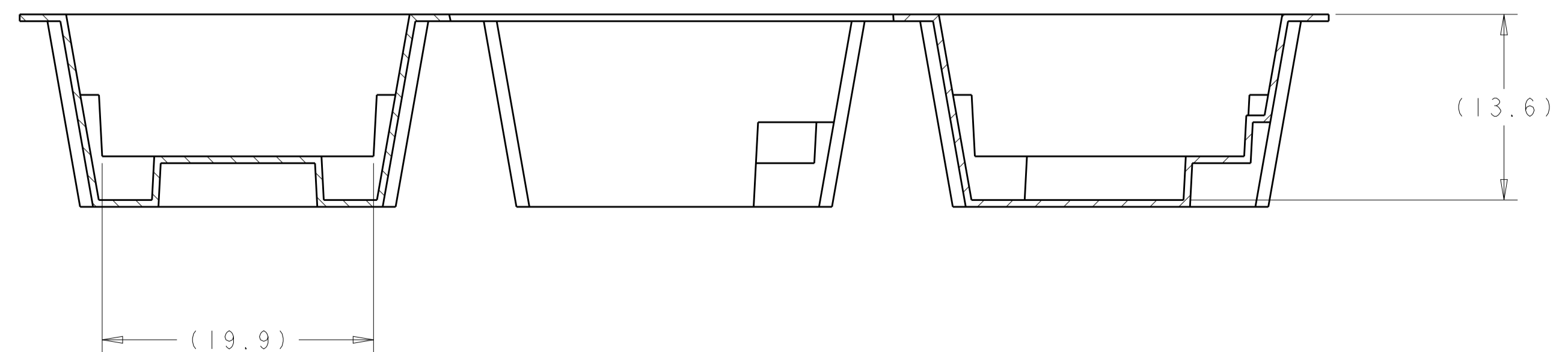
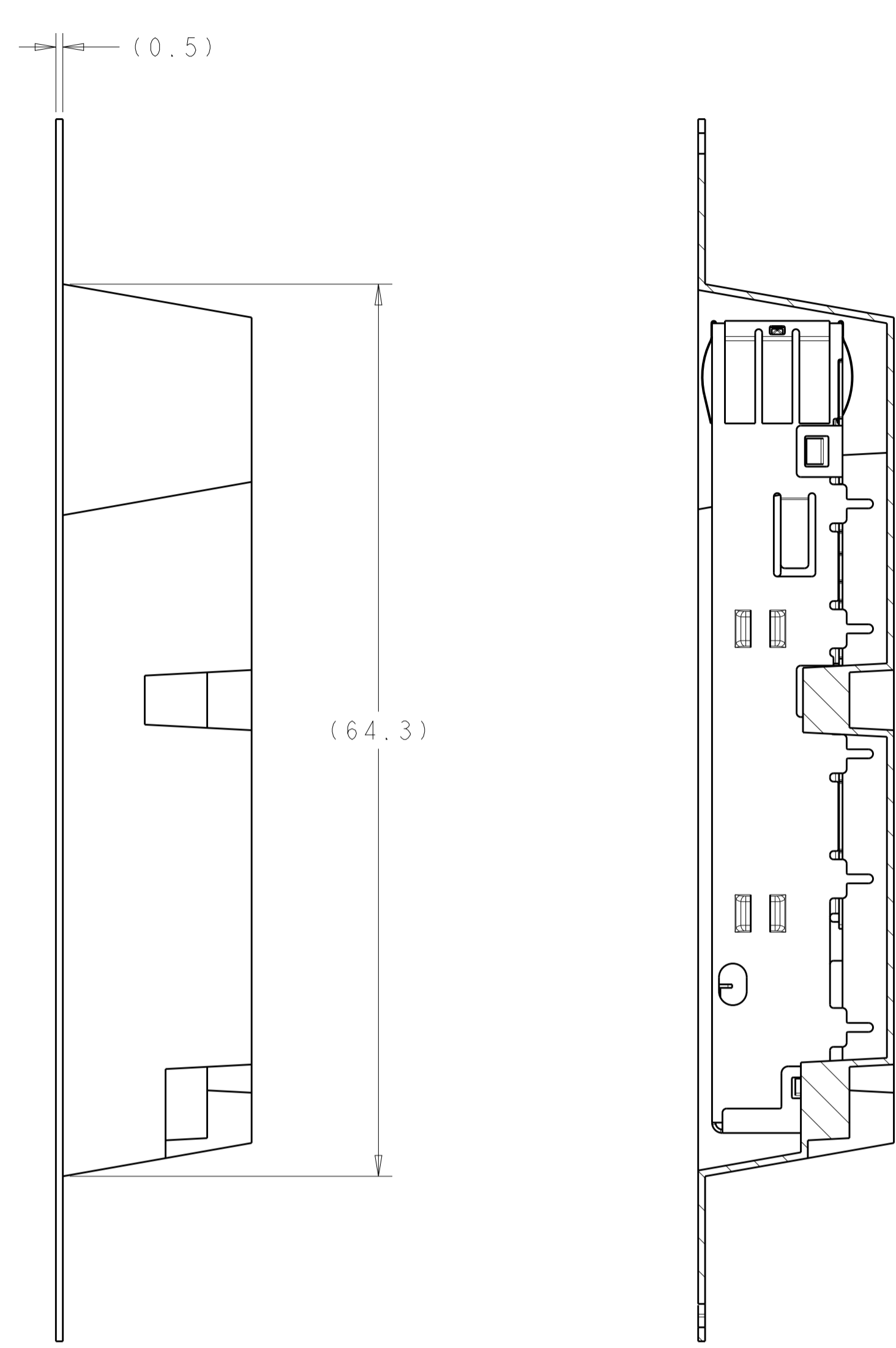
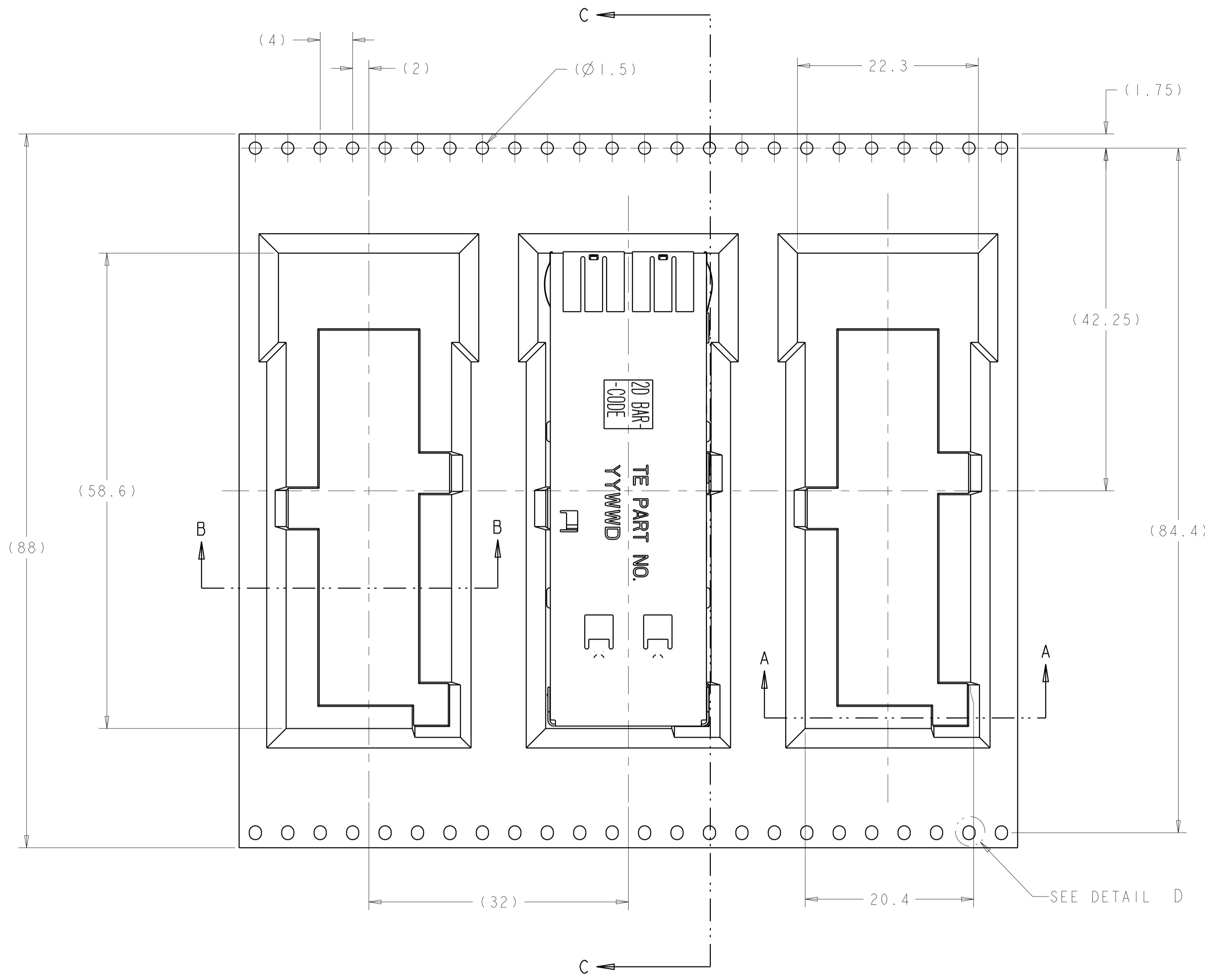
LOC	DIST	REVISIONS			
P	LTN	DESCRIPTION	DATE	DWN	APVD
GP	00	SEE SHEET 1	-	-	-



REEL PACKAGING
 180 PCS PER REEL
 SCALE APPROXIMATE
 SCALE 3:5

<small>THIS DRAWING IS UNPUBLISHED. RELEASED FOR PUBLICATION BY TYCO ELECTRONICS CORPORATION. ALL RIGHTS RESERVED.</small>		DWN: Z.M. BEAM 22SEP2009 CHK: J.R. PETERSON 22SEP2009 APVD: B.H. WERTZ 22SEP2009	Tyco Electronics Harrisburg, PA 17105-3608
DIMENSIONS: mm 	TOLERANCES UNLESS OTHERWISE SPECIFIED: 0 PLC ±0.1 1 PLC ±0.1 2 PLC ±0.1 3 PLC ± 4 PLC ± ANGLES ± FINISH	NAME: OSFP PRODUCT SPEC: 108-2286 APPLICATION SPEC: 114-13217 WEIGHT:	SIZE: A CAGE CODE: 00779 DRAWING NO: C=2110487 RESTRICTED TO:
MATERIAL: -	FINISH: -	WEIGHT: -	SCALE: 5:1 SHEET 4 OF 5 REV 5
CUSTOMER DRAWING		SCALE 5:1 SHEET 4 OF 5 REV 5	

LOC	DIST	REVISIONS					
GP	00	P	LTN	DESCRIPTION	DATE	DWN	APVD
		-		SEE SHEET 1			



DETAIL D
SCALE 20:1

THIS PRINT IS
PRELIMINARY
 UNQUALIFIED PRODUCT
 CONTACT PRODUCT ENGINEERING
 BEFORE USING THIS PRINT

PACKAGING TAPE LAYOUT
 SCALE APPROXIMATE

<small>THIS DRAWING IS UNPUBLISHED. RELEASED FOR PUBLICATION BY TYCO ELECTRONICS CORPORATION. ALL RIGHTS RESERVED.</small>		DWN: Z.M. REAM 22SEP2009 CHK: J.R. PETERSON 22SEP2009 APVD: B.H. WERTZ 22SEP2009	Tyco Electronics Harrisburg, PA 17105-3608
DIMENSIONS: mm 	TOLERANCES UNLESS OTHERWISE SPECIFIED: 0 PLC ±0.1 1 PLC ±0.1 2 PLC ±0.1 3 PLC ±0.1 4 PLC ±0.1 ANGLES ±° FINISH -	NAME: OSFP PRODUCT SPEC: 108-2286 APPLICATION SPEC: 114-13217 WEIGHT: - CUSTOMER DRAWING	SIZE: A CAGE CODE: 00779 DRAWING NO: C=2110487 RESTRICTED TO: - SCALE: 5:1 SHEET: 5 OF 5 REV: 5

X-ON Electronics

Largest Supplier of Electrical and Electronic Components

Click to view similar products for [I/O Connectors](#) category:

Click to view products by [TE Connectivity](#) manufacturer:

Other Similar products are found below :

[571763P](#) [58098-0628](#) [72.250.1628.2](#) [72.250.2428.2](#) [74720-0505](#) [76.350.0729.0](#) [76871-1403](#) [FCN-244F080-G/1](#) [FCN-260A9920](#) [PCR-E36PM](#) [PCS-XE26MA+](#) [G38A71314B](#) [1571250010](#) [157-22500-3](#) [MS3471L14-19P L/C](#) [172501-4002](#) [172501-6002](#) [FCN-260C008-A/L0](#) [FCN-260C024-AL0](#) [FCN-261Z008](#) [2000314-1](#) [200331-1](#) [PCR-E36FC+](#) [PCS-E28FS+](#) [PCS-XE26SLFD+](#) [PCS-XE26SLFDT+](#) [G730VID08BDC24](#) [U90B2054081210](#) [38113800006](#) [DP3AR020WQ1R200](#) [Z4.102.0680.0](#) [500-1040](#) [500-1052](#) [500-1054](#) [ZP-4008-66L](#) [0709821002](#) [DX40-20P\(55\)](#) [5554841-1](#) [MS3474W18-8P-LC*](#) [U90B3054061110](#) [U65-E04-4020](#) [ZPF000000000097891](#) [747360449](#) [10099439-003C-TRLF](#) [10137239-0021LF](#) [E9320-001-01](#) [10137239-0011LF](#) [70289-001LF](#) [70.060.1028.0](#) [109029-ZZ](#)