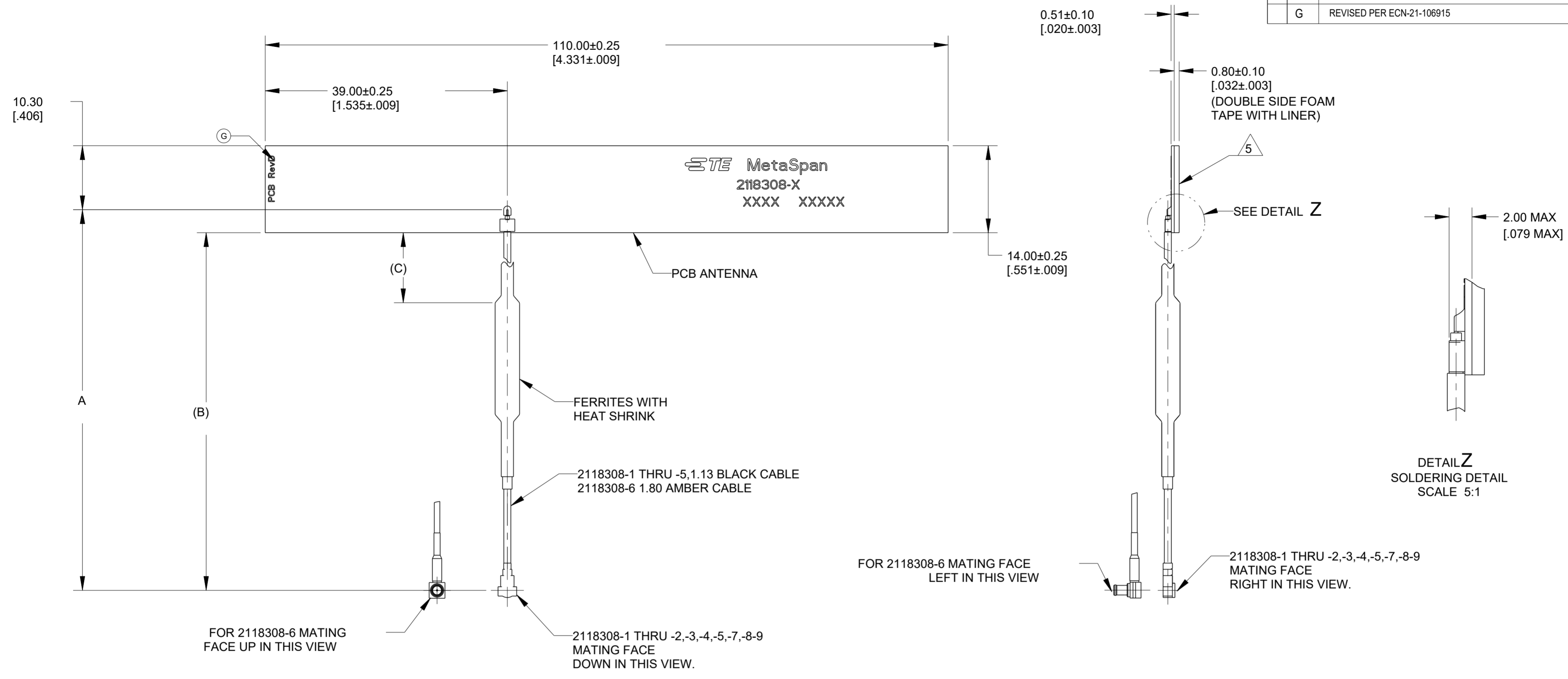


THIS DRAWING IS UNPUBLISHED. RELEASED FOR PUBLICATION 20
 © COPYRIGHT 20 BY TYCO ELECTRONICS CORPORATION ALL RIGHTS RESERVED.

LOC	DIST	REVISIONS			
P	LTR	DESCRIPTION	DATE	DWN	APVD
00	AJ	E	REVISED PER ECO-18-020155	21DEC2018	CR CR
		F	REVISED PER ECO-20-009604	25JUN2020	SJ JH
		F1	REVISED PER ECO-20-010088	20JUL2020	SJ JH
		G	REVISED PER ECN-21-106915	23JUN2021	SJ CY



- PRODUCT AND PROCESSING MEETS THE REQUIREMENTS OF TE CONNECTIVITY ENVIRONMENTAL STANDARD TEC-138-702. LOW HALOGEN: CODE2:LOW Br/Cl PER TEC-138-702
- MINIMUM IDENTIFICATION INCLUDES: TE LOGO, MetaSpan, TE ASSEMBLY PART NUMBER, AND FOUR DIGIT DATE CODE (FIRST 2 DIGITS FOR THE WEEK CODE AND THE 2ND TWO DIGITS FOR THE YEAR CODE). PCB REVISION AT SEPARATE LOCATION.
- MATERIALS: PCB MATERIAL. TOTAL THICKNESS: 0.51 [0.020], SINGLE SIDE, 1/2 OUNCE COPPER.
- OVERPLATING: PLATING ON EXPOSED COPPER AREAS TO BE E.N.I.G. FINISH.
- REMOVE LINER FROM DOUBLE SIDED FOAM TAPE 3M VHB RP32 TO APPLY ANTENNA IN APPLICATION.
- PRODUCT PACKAGED IN A BAG.
- CUSTOMER SPECIFIC REQUIRED LABELS TO BE PLACED ON BAGS AND BOXES
- THIS PART IS SPECIAL PACKAGED AND IS NOT FOR GENERAL SALES. USE "-3" VERSION FOR GENERAL SALES.

FOR 2118308-6 MATING FACE LEFT IN THIS VIEW
 2118308-1 THRU -2,-3,-4,-5,-7,-8-9 MATING FACE DOWN IN THIS VIEW.

FOR 2118308-6 MATING FACE UP IN THIS VIEW
 2118308-1 THRU -2,-3,-4,-5,-7,-8-9 MATING FACE RIGHT IN THIS VIEW.

MHF4L	70.0	346.3	350.0	2118308-9
MHF	175.0	286.3	290.0	2118308-8
MHF	70.0	146.30 (5.759)	150.00 (5.905)	2118308-7
MCX RA PLUG	40.0	190.0(7.48)	193.7(7.626)	2118308-6
MHF	70.0	200.0(7.874)	203.7(8.02)	2118308-5
MHF	70.0	496.30(19.539)	500.00(19.685)	2118308-4
MHF	70.0	146.30(5.759)	150.00(5.905)	2118308-3
MHF4L	70.0	116.30(4.579)	120.00(4.724)	2118308-2
MHF	70.0	116.30(4.579)	120.00(4.724)	2118308-1
(CONNECTOR TYPE)	C REF	B REF	A ±5.00 (±.196)	PART NUMBER

THIS DRAWING IS A CONTROLLED DOCUMENT.

DWN	K. FOLTZ	01MAR2013
CHK	G. GRIFFITH	04MAR2013
APVD	G. GRIFFITH	04MAR2013

TE Connectivity

4 G WORLD BAND MetaSpan
 CABLED PCB GP INDEPENDENT

SIZE	A2	CAGE CODE	00779	DRAWING NO	C-2118308	RESTRICTED TO	-
CUSTOMER DRAWING		SCALE	1:1	SHEET	1 OF 1	REV	G

X-ON Electronics

Largest Supplier of Electrical and Electronic Components

Click to view similar products for [Antennas](#) category:

Click to view products by [TE Connectivity](#) manufacturer:

Other Similar products are found below :

[GAN30084EU](#) [930-033-R](#) [GW17.07.0250E](#) [1513563-1](#) [EXE902SM](#) [APAMPG-117](#) [MAF94383](#) [W3908B0100](#) [W6102B0100](#) [YE572113-30RSMM](#) [108-00014-50](#) [66089-2406](#) [SPDA17RP918](#) [A09-F8NF-M](#) [A09-F5NF-M](#) [RGFRA1903041A1T](#) [W3593B0100](#) [W3921B0100](#) [SIMNA-868](#) [SIMNA-915](#) [SIMNA-433](#) [W1044](#) [W1049B090](#) [A75-001](#) [WTL2449CQ1-FRSMM](#) [CPL9C](#) [EXB148BN](#) [0600-00060](#) [TRA9020S3PBN-001](#) [GD5W-28P-NF](#) [MA9-7N](#) [GD53-25](#) [GD5W-21P-NF](#) [C37](#) [MAF94051](#) [MA9-5N](#) [EXD420PL](#) [B1322NR](#) [QWFTB120](#) [MAF94271](#) [MAF94300](#) [GPSMB301](#) [FG4403](#) [AO-AGSM-OM54](#) [5200232](#) [MIKROE-2349](#) [WCM.01.0111](#) [MIKROE-2393](#) [MIKROE-2352](#) [MIKROE-2350](#)