



Figure 1

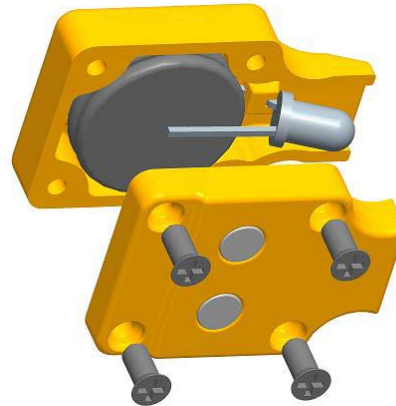


Figure 2

1. INTRODUCTION

The LightKnack Portable Magnetic L.E.D. Light (see Figure 1) is designed to provide light where it is needed. The light affixes to any magnetic surface via two powerful rare earth magnets, and the housing is made from rugged, glass-filled plastic.

The light's housing is contoured specifically to fit on the TE Connectivity CERTI-CRIMP® II hand tool heads as shown in Figure 1.

2. BATTERY REPLACEMENT (Figure 2)

The LightKnack L.E.D. Light runs on two CR1216 batteries (included). These batteries can be replaced by performing the following procedure:

NOTE *TE does not sell the batteries, but they are commonly available.*



1. Remove the four screws at the bottom of the light.
2. Remove the bottom cover.

3. Remove the old batteries.
4. Check that the switch and L.E.D. are in place.
5. Place the new batteries in the light with the positive side toward the bottom cover.
6. Replace the bottom cover and the four screws.

3. ORDERING INFORMATION/REPLACEMENT PARTS

The LightKnack L.E.D. Light can be ordered in packages of three using part number 2119700-1. To order this part, contact your TE Representative, or call 1-800-526-5142, or send a facsimile of your purchase order to 1-717-986-7605, or write to:

CUSTOMER SERVICE (038-035)
TYCO ELECTRONICS CORPORATION
PO BOX 3608
HARRISBURG PA 17105-3608

4. REVISION SUMMARY

- Initial release of document

X-ON Electronics

Largest Supplier of Electrical and Electronic Components

Click to view similar products for [Hand Tools](#) category:

Click to view products by [TE Connectivity](#) manufacturer:

Other Similar products are found below :

[58284-1](#) [662908-1](#) [68764-0001](#) [690619-6](#) [7-354778-7](#) [768531-1](#) [821903-5](#) [822253-1](#) [854183-1](#) [854358-1](#) [992258-1](#) [1-21046-3](#) [1-22278-0](#)
[1-22278-2](#) [1-24954-2](#) [125529-5](#) [126513-1](#) [1320846-1](#) [1338618-1](#) [1338968-2](#) [1-354779-0](#) [1-354779-2](#) [1-354779-4](#) [1424443-1](#) [1424289-1](#)
[1424444-1](#) [MS24256A16](#) [1-525442-0](#) [1532195-2](#) [1538773-2](#) [1-59681-8](#) [1-59907-5](#) [1-692134-3](#) [1725760-1](#) [HT-920A-124-HTELE-RPL-KIT](#)
[1976923-1](#) [1976969-1](#) [2063794-1](#) [2063795-1](#) [2-21002-1](#) [2-21002-3](#) [2-21002-4](#) [2-21002-7](#) [2-21002-9](#) [2-21004-0](#) [229399-2](#) [229707-1](#)
[911737-2](#) [2598-5027-54](#) [91348-2](#)