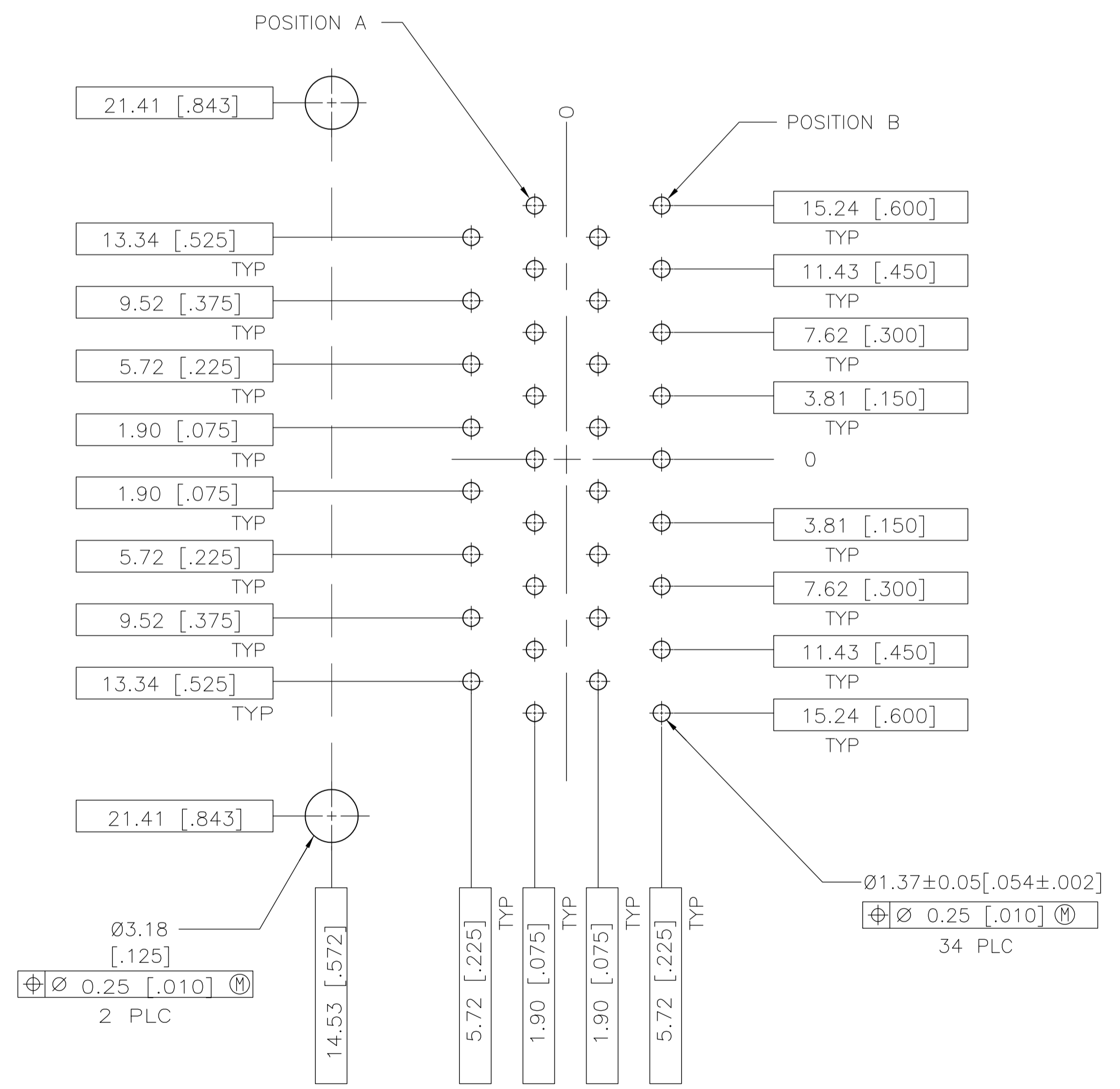
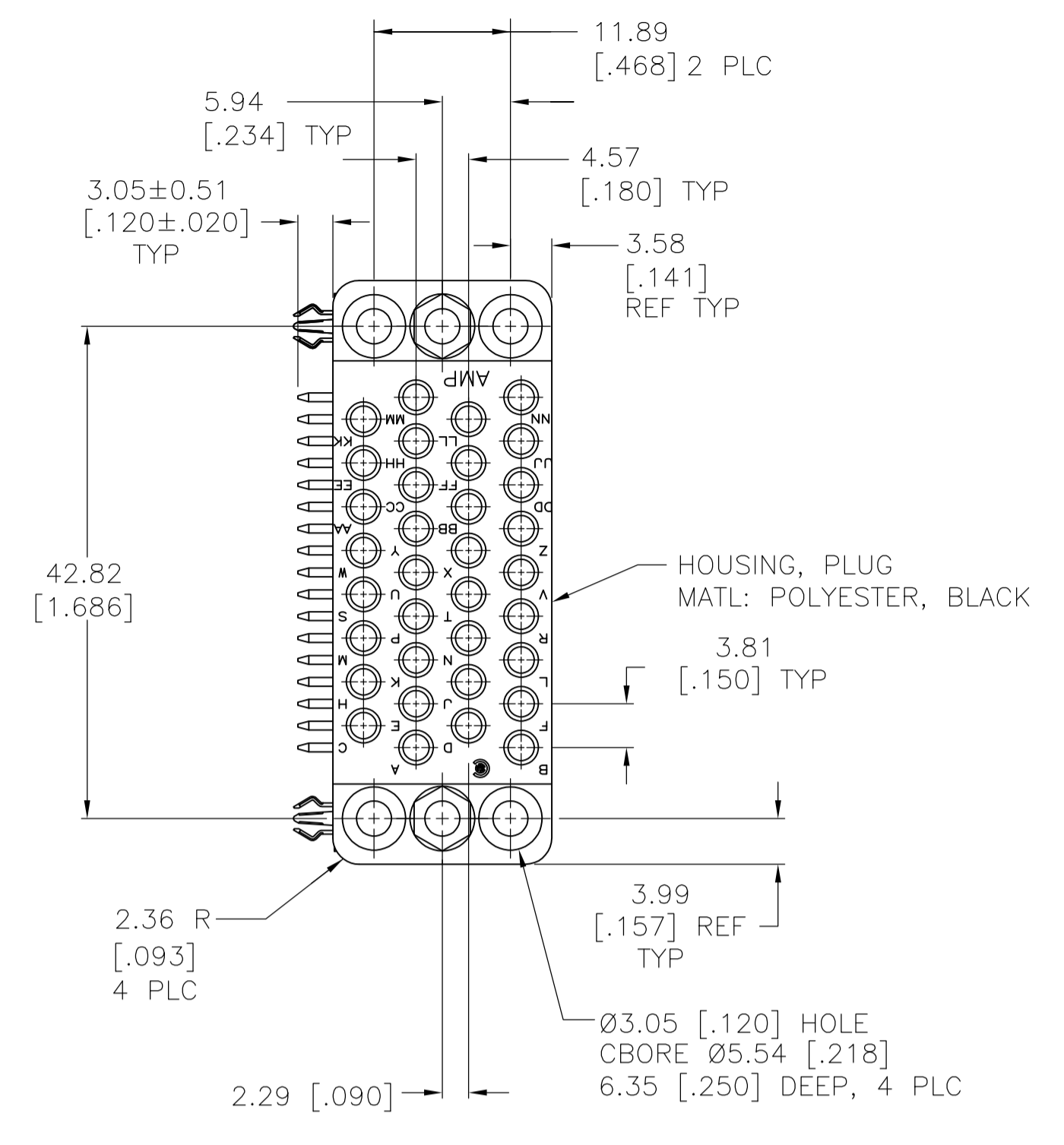
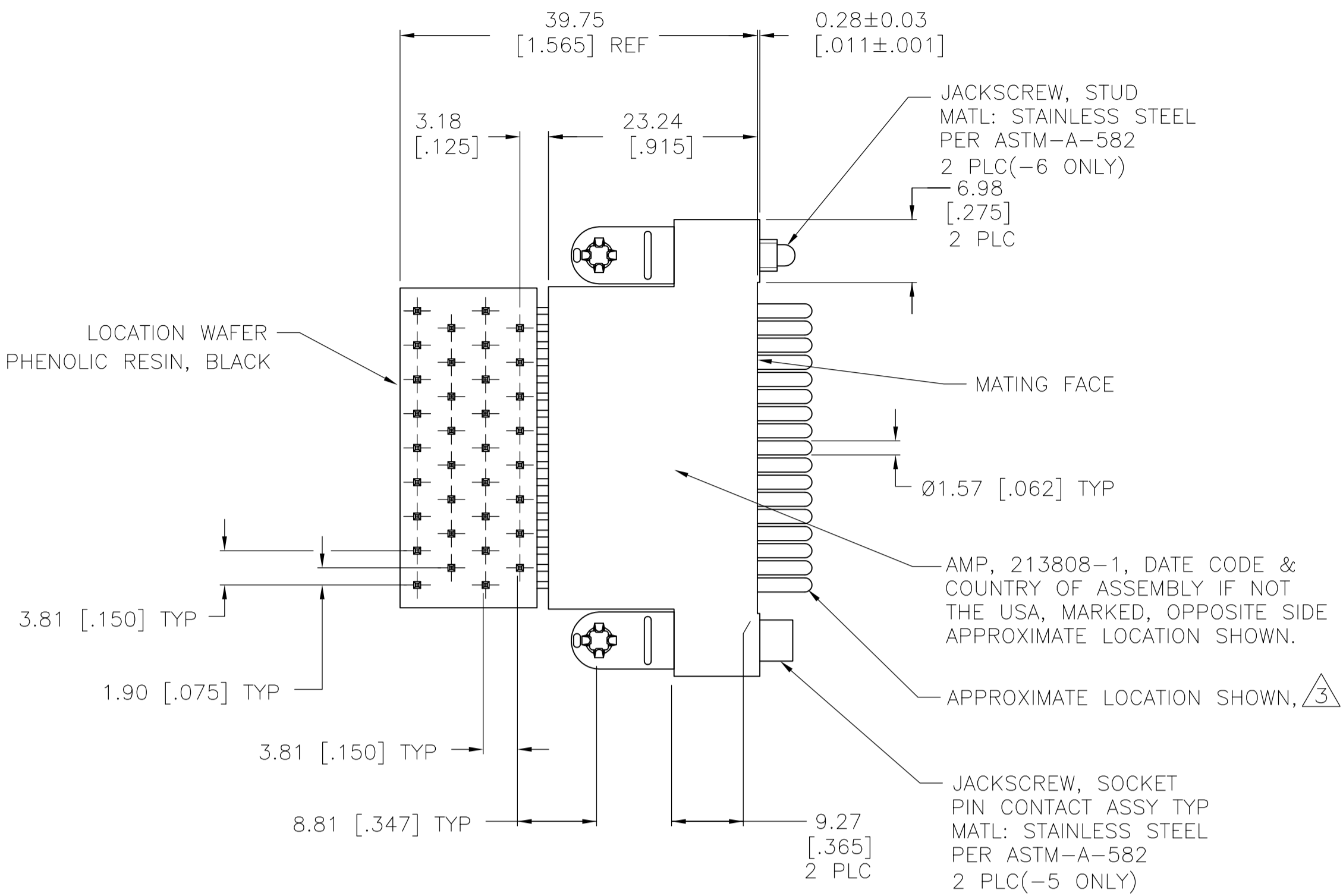
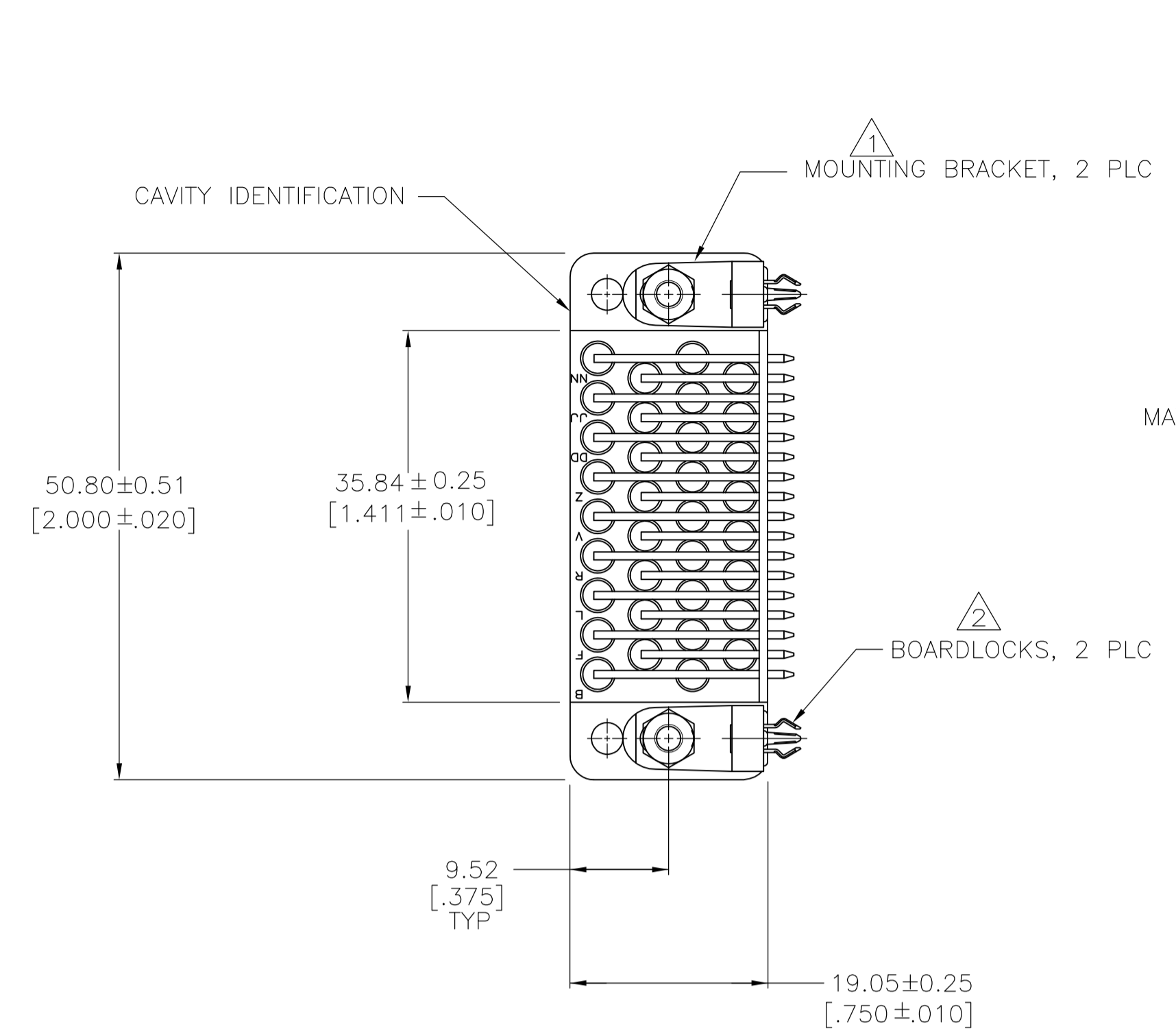
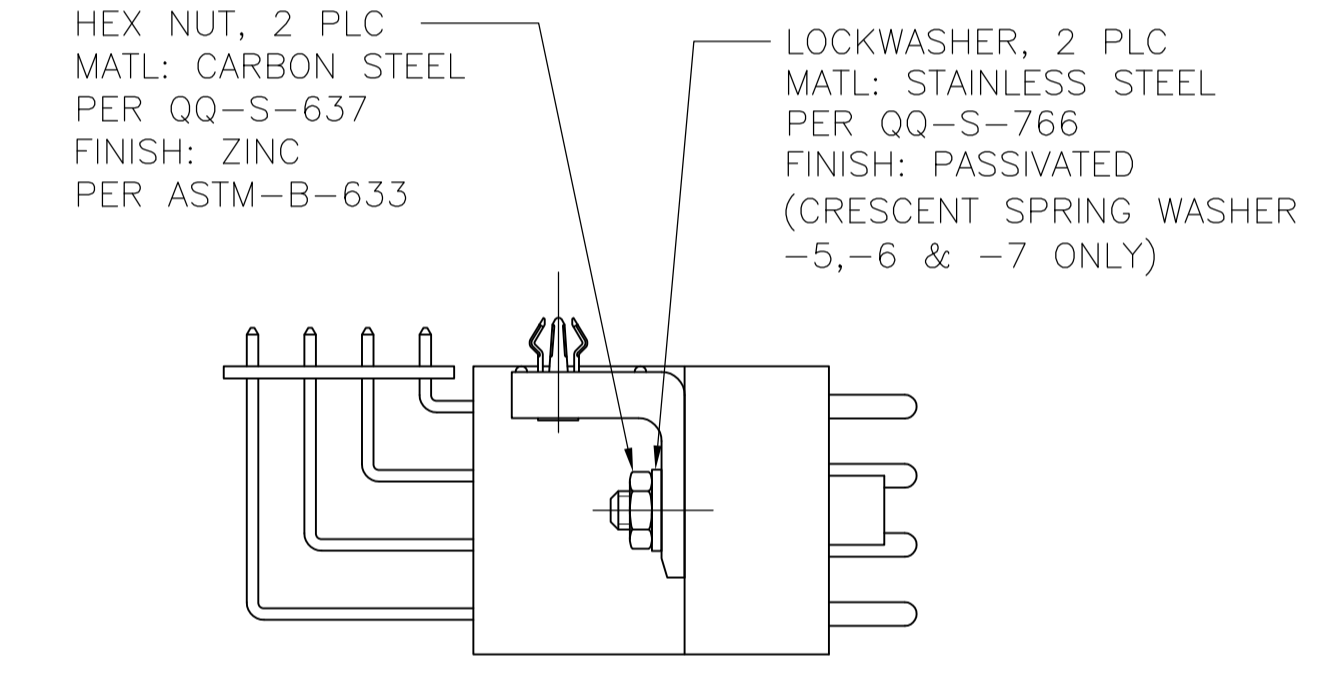


REVISIONS					
REV	DATE	DESCRIPTION	BY	CHK	APPV
E4	21SEP2016	REVISED PER ECO-16-013463		NK	MZ
F	28FEB2017	REVISED PER ECR-17-002064		RS	MZ



RECOMMENDED PC BOARD LAYOUT SCALE 4:1



- MOUNTING BRACKET:** MATERIAL: ZINC PER QQ-Z-363. FINISH: 3.81um [0.000150] MIN NICKEL PER QQ-N-290 OVER 2.54um [0.000100] MIN COPPER PER MIL-C-14550.
- BOARDLOCK:** MATERIAL: COPPER ALLOY PER ASTM-B-592. FINISH: 5.08um [0.000200] MIN TIN-LEAD PER MIL-T-10727 OVER 1.27um [0.000050] MIN NICKEL PER QQ-N-290.
- PIN CONTACT ASSEMBLY:** BODY MATERIAL: BRASS PER MIL-C-50. FINISH: 0.76um [0.000030] MIN GOLD PER MIL-G-45204 FOR A LENGTH OF 5.08 [0.200] MIN FROM MATING END, 2.54um [0.000100] MIN TIN-LEAD PER MIL-T-10727 FOR A LENGTH OF 6.35 [0.250] MIN FROM OPPOSITE END, BOTH OVER 1.27um [0.000050] MIN NICKEL PER QQ-N-290. SPRING-MATERIAL: STAINLESS STEEL PER QQ-S-766. POST-MATERIAL: BRASS PER ASTM-B-134. FINISH: 2.54um [0.000100] MIN TIN-LEAD PER MIL-T-10727 OVER 1.27um [0.000050] MIN NICKEL PER QQ-N-290.
- PIN CONTACT ASSEMBLIES ARE SELECTIVELY LOADED INTO HOUSING AND LOCATION WAFER AT CIRCUITS A,B,C,D,E,F,H,K,P,R,S,T,U,V,W,X,Y AND AA. NO HARDWARE IS SUPPLIED.**
- PIN CONTACT ASSEMBLY:** BODY MATERIAL: BRASS PER MIL-C-50. FINISH: 0.76um [0.000030] MIN GOLD PER MIL-G-45204 FOR A LENGTH OF 5.08 [0.200] MIN FROM MATING END, 2.54um [0.000100] MIN TIN-LEAD PER MIL-T-10727 FOR A LENGTH OF 6.35 [0.250] MIN FROM OPPOSITE END, BOTH OVER 1.27um [0.000050] MIN NICKEL PER QQ-N-290. SPRING-MATERIAL: STAINLESS STEEL PER QQ-S-766. POST-MATERIAL: BRASS PER ASTM-B-134. FINISH: 2.54um [0.000100] MIN TIN PER MIL-T-10727 OVER 1.27um [0.000050] MIN NICKEL PER QQ-N-290.
- BOARDLOCK:** MATERIAL: COPPER ALLOY PER ASTM-B-592. FINISH: 5.08um [0.000200] MIN TIN PER MIL-T-10727 OVER 1.27um [0.000050] MIN NICKEL PER QQ-N-290.
- OBSOLETE PARTS:** OBSOLETE CIS STREAMLINING PER D.RENAUD/D.SINISI

REV	DESCRIPTION	DATE	BY	CHK	APPV
7	OBSOLETE				
6	OBSOLETE				
5	OBSOLETE				
4	OBSOLETE				
3	OBSOLETE				
2	OBSOLETE				
1	SUPERSEDED				

THIS DRAWING IS A CONTROLLED DOCUMENT. DIN D.BROCKWAY 08-22-94. R.STONE 09-08-94.

TE Connectivity

CONNECTOR ASSEMBLY, PIN, 34 POSITION, RIGHT ANGLE, M SERIES

SIZE: A1 CAGE CODE: 00779 DRAWING NO: 213808

SCALE: 2:1 SHEET: 1 OF 1 REV: F

X-ON Electronics

Largest Supplier of Electrical and Electronic Components

Click to view similar products for [Rack & Panel Connectors](#) category:

Click to view products by [TE Connectivity](#) manufacturer:

Other Similar products are found below :

[00171410002](#) [00171420202](#) [00171440002](#) [02-014-013-5200-000](#) [613467-000](#) [CTJ112E01E-513](#) [CTJ116E03A-513](#) [66020-2](#) [CW8958-000](#)
[699886-000](#) [D250-50632](#) [70.400.3240.0](#) [70.955.2453.3](#) [733753-000](#) [F22831-000](#) [780-522-DPX34RG8-02](#) [8660-501](#) [87.060.0053.0](#)
[900709N001](#) [928358-1](#) [D-659-0061](#) [1-445717-6](#) [1484469-2](#) [1604997-2](#) [MTC100-BF1-P31CS015](#) [MTC100-KT2-0083](#) [MTC100-KT2-0123-](#)
[003](#) [MTC100-YA1-005](#) [MTC PQKT1R2PGCA](#) [MTCR-103-04S](#) [MTCX1X-100-100CS025](#) [1738331-1](#) [1757667-1](#) [1811481-1](#) [1883433-1](#)
[201046-7](#) [202648-4](#) [213364-1](#) [226503-000](#) [937028-164](#) [1663130-2](#) [172305-4](#) [AC-660022-701BP](#) [F36711-000](#) [202355-2](#) [202356-2](#) [G16S-A](#)
[G20S-AB](#) [CHA-0017-003](#) [CHA-0296](#)